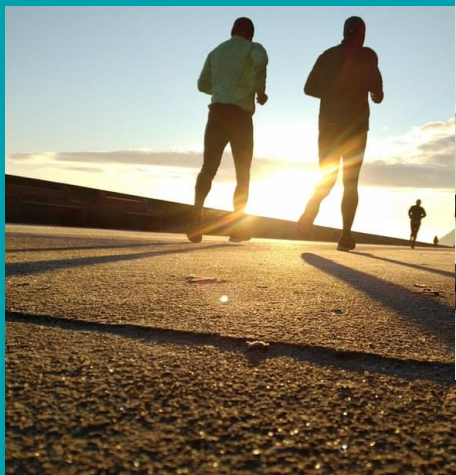


# The Florida Behavioral Risk Factor Surveillance System (BRFSS) 2018



Florida Department of Health  
Division of Community Health Promotion  
Public Health Research Section

Scott A. Rivkees, MD  
State Surgeon General

Ron DeSantis  
Governor

August 2019



# Introduction

The Florida Department of Health is pleased to release the 2018 Florida Behavioral Risk Factor Surveillance System (BRFSS) State Data. The Florida BRFSS has been collecting and reporting health behavior data since 1986. The 2018 BRFSS Survey interviewed 15,242 Florida adults aged 18 years and older.

This statewide telephone survey is the only source of state-specific, population-based estimates of the prevalence of various health conditions and related risk behaviors among Florida residents aged 18 and older. The purpose of this survey is to gather information regarding personal health and risk behaviors, selected medical conditions, and preventive health care practices among Florida adults. These data can be used to: (1) determine priority health issues and identify populations at risk for illness, disability, and death; (2) plan and evaluate prevention programs; (3) educate the community and policy makers about disease prevention; and (4) support community policies that promote health and prevent disease.

The following data tables present the survey data on a variety of issues related to health status, health care access, lifestyle, chronic illnesses, and disease prevention practices. Each indicator was analyzed by sex, race/ethnicity, age, education, income, and marital status.

Since BRFSS respondents are randomly selected, measures of prevalence and mean are subject to random sample errors. Each measure listed in the data tables includes the 95% confidence interval (CI). If the CIs overlap between subpopulations (e.g., males compared to females), there is no statistically significant difference in the prevalence rates. However, if the CIs do not overlap, there is a statistically significant difference. For example, if the CI for men is 21.4% - 24.5% and the CI for women is 29.4% - 32.5%, then there is a statistically higher prevalence of women having that particular indicator compared to men as the two CIs do not overlap.

The CIs are determined by many factors, sample size in particular. As the data are divided for analysis by race/ethnicity, age, etc., the sample size for each group becomes smaller, the CIs become larger, and the estimates become less reliable. The significance of measures with very wide CIs should be interpreted with caution. Measures of prevalence and mean are excluded from the tables for any subpopulation with a sample size less than 30, which would yield statistically unreliable estimates.

The prevalence rates are adjusted, or “weighted,” by the Centers for Disease Control and Prevention (CDC) to represent all Florida adults. Weighting is a procedure that adjusts for the chance of an adult being selected to complete the survey and for discrepancies between the adults who completed the survey and the overall population of Florida adults. The data were weighted to the respondent’s probability of selection by county, as well as age, sex, marital status, race/ethnicity, education level, and housing type.

Due to a change in weighting methodology and the inclusion of cellular telephone responses starting in 2011, data from 2018 may not be comparable to data collected before 2011.

**2018 Florida BRFSS Data Book  
Table of Contents**

---

**Health Status**

|  |    |
|--|----|
| Arthritis                                    | 1  |
| Asthma                                       | 2  |
| Cancer Prevalence                            | 3  |
| Cardiovascular Disease                       | 4  |
| Cholesterol Awareness                        | 6  |
| Chronic Obstructive Pulmonary Disease (COPD) | 9  |
| Depression                                   | 10 |
| Diabetes                                     | 11 |
| Disability                                   | 14 |
| Epilepsy                                     | 18 |
| Fall-Related Injury                          | 20 |
| Hypertension Awareness & Control             | 21 |
| Kidney Disease                               | 22 |
| Oral Health                                  | 23 |
| Overweight & Obesity                         | 24 |

**Health-Related Prevention**

|                             |    |
|-----------------------------|----|
| Cancer Screening/Breast     | 26 |
| Cancer Screening/Cervical   | 27 |
| Cancer Screening/Colorectal | 29 |
| Cancer Screening/Prostate   | 32 |
| Clinical Breast Exam        | 33 |
| HIV/AIDS Screening          | 35 |
| Immunization                | 37 |
| Injury Prevention           | 39 |

**Health-Related Behaviors**

|                               |    |
|-------------------------------|----|
| Alcohol Consumption           | 40 |
| Marijuana use                 | 41 |
| Physical Activity & Nutrition | 42 |
| Tobacco Use & Exposure        | 43 |

|  |    |
|--|----|
| <b>Health Status &amp; Quality of Life</b> | 47 |
|--|----|

|  |    |
|--|----|
| <b>Health Care Access &amp; Coverage</b> | 54 |
|--|----|

|                 |            |
|-----------------|------------|
| <b>Glossary</b> | Appendix I |
|-----------------|------------|

|                                       |             |
|---------------------------------------|-------------|
| <b>Healthy People 2020 Objectives</b> | Appendix II |
|---------------------------------------|-------------|

2018 Florida BRFSS Data

**Arthritis**

**Percentage of adults who have been told they have some form of arthritis, rheumatoid arthritis, gout, lupus, or fibromyalgia**

|                              |                       | Measure | 95% CI      |
|------------------------------|-----------------------|---------|-------------|
| <b>ALL</b>                   | Overall               | 26.5    | 25.2 - 27.8 |
| <b>SEX</b>                   | Men                   | 22.1    | 20.3 - 23.9 |
|                              | Women                 | 30.6    | 28.8 - 32.5 |
| <b>RACE/ETHNICITY</b>        | Non-Hisp. White       | 32.5    | 30.9 - 34.0 |
|                              | Non-Hisp. Black       | 20.1    | 16.6 - 23.5 |
|                              | Hispanic              | 17.7    | 14.4 - 21.0 |
| <b>SEX BY RACE/ETHNICITY</b> | Non-Hisp. White Men   | 28.1    | 26.0 - 30.3 |
|                              | Non-Hisp. White Women | 36.6    | 34.5 - 38.7 |
|                              | Non-Hisp. Black Men   | 14.0    | 10.0 - 18.0 |
|                              | Non-Hisp. Black Women | 25.4    | 20.1 - 30.7 |
|                              | Hispanic Men          | 13.3    | 8.7 - 17.9  |
|                              | Hispanic Women        | 21.8    | 17.1 - 26.6 |
| <b>AGE GROUP</b>             | 18-44                 | 8.4     | 7.0 - 9.8   |
|                              | 45-64                 | 31.2    | 28.6 - 33.7 |
|                              | 65 & Older            | 49.8    | 47.1 - 52.4 |
| <b>EDUCATION LEVEL</b>       | <High School          | 30.7    | 25.8 - 35.6 |
|                              | High School / GED     | 27.0    | 24.5 - 29.4 |
|                              | >High School          | 25.2    | 23.7 - 26.8 |
| <b>ANNUAL INCOME</b>         | <\$25,000             | 32.0    | 29.0 - 35.0 |
|                              | \$25,000-\$49,999     | 26.2    | 23.3 - 29.1 |
|                              | \$50,000 or More      | 23.3    | 21.4 - 25.2 |
| <b>MARITAL STATUS</b>        | Married/Couple        | 25.3    | 23.6 - 27.0 |
|                              | Not Married/Couple    | 28.2    | 26.1 - 30.2 |

CI=Confidence Interval  
 NA=Not available due to respondent counts of less than 30.

2018 Florida BRFSS Data

**Asthma**

**Percentage of adults who currently have asthma**

|                              |                       | Measure | 95% CI      |
|------------------------------|-----------------------|---------|-------------|
| <b>ALL</b>                   | Overall               | 8.7     | 7.8 - 9.7   |
| <b>SEX</b>                   | Men                   | 5.0     | 4.0 - 6.0   |
|                              | Women                 | 12.2    | 10.7 - 13.7 |
| <b>RACE/ETHNICITY</b>        | Non-Hisp. White       | 8.7     | 7.7 - 9.7   |
|                              | Non-Hisp. Black       | 10.2    | 7.3 - 13.2  |
|                              | Hispanic              | 8.1     | 5.6 - 10.5  |
| <b>SEX BY RACE/ETHNICITY</b> | Non-Hisp. White Men   | 5.2     | 4.1 - 6.3   |
|                              | Non-Hisp. White Women | 12.0    | 10.4 - 13.6 |
|                              | Non-Hisp. Black Men   | 6.2     | 2.5 - 9.8   |
|                              | Non-Hisp. Black Women | 13.9    | 9.4 - 18.4  |
|                              | Hispanic Men          | 4.1     | 1.6 - 6.5   |
|                              | Hispanic Women        | 11.9    | 7.8 - 15.9  |
| <b>AGE GROUP</b>             | 18-44                 | 8.2     | 6.7 - 9.7   |
|                              | 45-64                 | 10.0    | 8.3 - 11.8  |
|                              | 65 & Older            | 8.1     | 6.4 - 9.8   |
| <b>EDUCATION LEVEL</b>       | <High School          | 13.2    | 9.0 - 17.3  |
|                              | High School / GED     | 9.9     | 8.1 - 11.7  |
|                              | >High School          | 7.1     | 6.2 - 8.1   |
| <b>ANNUAL INCOME</b>         | <\$25,000             | 13.6    | 11.0 - 16.1 |
|                              | \$25,000-\$49,999     | 6.7     | 5.2 - 8.3   |
|                              | \$50,000 or More      | 7.2     | 6.0 - 8.5   |
| <b>MARITAL STATUS</b>        | Married/Couple        | 6.5     | 5.5 - 7.6   |
|                              | Not Married/Couple    | 11.1    | 9.5 - 12.7  |

**Percentage of adults who have ever been told they have asthma**

|                              |                       | Measure | 95% CI      |
|------------------------------|-----------------------|---------|-------------|
| <b>ALL</b>                   | Overall               | 13.6    | 12.5 - 14.8 |
| <b>SEX</b>                   | Men                   | 9.6     | 8.2 - 11.0  |
|                              | Women                 | 17.3    | 15.6 - 19.1 |
| <b>RACE/ETHNICITY</b>        | Non-Hisp. White       | 12.6    | 11.4 - 13.7 |
|                              | Non-Hisp. Black       | 13.8    | 10.5 - 17.2 |
|                              | Hispanic              | 16.3    | 13.0 - 19.7 |
| <b>SEX BY RACE/ETHNICITY</b> | Non-Hisp. White Men   | 8.9     | 7.6 - 10.3  |
|                              | Non-Hisp. White Women | 16.0    | 14.2 - 17.8 |
|                              | Non-Hisp. Black Men   | 9.1     | 4.9 - 13.2  |
|                              | Non-Hisp. Black Women | 18.1    | 13.1 - 23.1 |
|                              | Hispanic Men          | 11.6    | 7.6 - 15.6  |
|                              | Hispanic Women        | 20.8    | 15.7 - 26.0 |
| <b>AGE GROUP</b>             | 18-44                 | 14.8    | 12.9 - 16.8 |
|                              | 45-64                 | 14.3    | 12.3 - 16.4 |
|                              | 65 & Older            | 11.1    | 9.2 - 13.0  |
| <b>EDUCATION LEVEL</b>       | <High School          | 18.1    | 13.4 - 22.8 |
|                              | High School / GED     | 14.1    | 12.0 - 16.2 |
|                              | >High School          | 12.4    | 11.1 - 13.7 |
| <b>ANNUAL INCOME</b>         | <\$25,000             | 18.3    | 15.5 - 21.1 |
|                              | \$25,000-\$49,999     | 12.6    | 10.2 - 15.0 |
|                              | \$50,000 or More      | 11.7    | 10.1 - 13.3 |
| <b>MARITAL STATUS</b>        | Married/Couple        | 11.0    | 9.6 - 12.4  |
|                              | Not Married/Couple    | 16.5    | 14.6 - 18.4 |

CI=Confidence Interval  
 NA=Not available due to respondent counts of less than 30.

2018 Florida BRFSS Data

**Cancer Prevalence**

**Percentage of adults who have ever been told they have had skin cancer**

|                              |                       | Measure | 95% CI      |
|------------------------------|-----------------------|---------|-------------|
| <b>ALL</b>                   | Overall               | 9.8     | 9.1 - 10.6  |
| <b>SEX</b>                   | Men                   | 10.5    | 9.4 - 11.7  |
|                              | Women                 | 9.2     | 8.2 - 10.1  |
| <b>RACE/ETHNICITY</b>        | Non-Hisp. White       | 15.9    | 14.7 - 17.0 |
|                              | Non-Hisp. Black       | 0.6     | 0.0 - 1.3   |
|                              | Hispanic              | 2.6     | 1.3 - 3.9   |
| <b>SEX BY RACE/ETHNICITY</b> | Non-Hisp. White Men   | 16.4    | 14.7 - 18.1 |
|                              | Non-Hisp. White Women | 15.4    | 13.8 - 17.0 |
|                              | Non-Hisp. Black Men   | 0.8     | 0.0 - 2.2   |
|                              | Non-Hisp. Black Women | 0.4     | 0.0 - 1.0   |
|                              | Hispanic Men          | 3.8     | 1.4 - 6.3   |
|                              | Hispanic Women        | 1.4     | 0.4 - 2.5   |
| <b>AGE GROUP</b>             | 18-44                 | 0.7     | 0.4 - 1.1   |
|                              | 45-64                 | 9.4     | 8.0 - 10.8  |
|                              | 65 & Older            | 24.5    | 22.4 - 26.6 |
| <b>EDUCATION LEVEL</b>       | <High School          | 5.4     | 3.0 - 7.7   |
|                              | High School / GED     | 10.0    | 8.5 - 11.5  |
|                              | >High School          | 10.7    | 9.8 - 11.7  |
| <b>ANNUAL INCOME</b>         | <\$25,000             | 8.4     | 6.7 - 10.0  |
|                              | \$25,000-\$49,999     | 9.1     | 7.6 - 10.7  |
|                              | \$50,000 or More      | 11.9    | 10.6 - 13.2 |
| <b>MARITAL STATUS</b>        | Married/Couple        | 11.6    | 10.5 - 12.7 |
|                              | Not Married/Couple    | 7.8     | 6.9 - 8.8   |

**Percentage of adults who have ever been told they had any other type of cancer except skin cancer**

|                              |                       | Measure | 95% CI      |
|------------------------------|-----------------------|---------|-------------|
| <b>ALL</b>                   | Overall               | 7.9     | 7.1 - 8.7   |
| <b>SEX</b>                   | Men                   | 7.4     | 6.3 - 8.5   |
|                              | Women                 | 8.4     | 7.4 - 9.5   |
| <b>RACE/ETHNICITY</b>        | Non-Hisp. White       | 9.7     | 8.9 - 10.6  |
|                              | Non-Hisp. Black       | 5.1     | 3.1 - 7.1   |
|                              | Hispanic              | 6.0     | 3.9 - 8.1   |
| <b>SEX BY RACE/ETHNICITY</b> | Non-Hisp. White Men   | 8.9     | 7.7 - 10.2  |
|                              | Non-Hisp. White Women | 10.5    | 9.3 - 11.7  |
|                              | Non-Hisp. Black Men   | 6.1     | 2.5 - 9.6   |
|                              | Non-Hisp. Black Women | 4.2     | 2.1 - 6.4   |
|                              | Hispanic Men          | 5.2     | 2.4 - 7.9   |
|                              | Hispanic Women        | 6.9     | 3.8 - 10.0  |
| <b>AGE GROUP</b>             | 18-44                 | 1.4     | 0.8 - 2.0   |
|                              | 45-64                 | 7.2     | 5.7 - 8.6   |
|                              | 65 & Older            | 19.0    | 17.0 - 21.0 |
| <b>EDUCATION LEVEL</b>       | <High School          | 8.0     | 4.7 - 11.2  |
|                              | High School / GED     | 6.7     | 5.5 - 7.9   |
|                              | >High School          | 8.4     | 7.5 - 9.4   |
| <b>ANNUAL INCOME</b>         | <\$25,000             | 8.6     | 6.9 - 10.2  |
|                              | \$25,000-\$49,999     | 8.0     | 6.3 - 9.7   |
|                              | \$50,000 or More      | 8.2     | 7.0 - 9.5   |
| <b>MARITAL STATUS</b>        | Married/Couple        | 8.7     | 7.6 - 9.8   |
|                              | Not Married/Couple    | 7.1     | 6.0 - 8.2   |

CI=Confidence Interval  
 NA=Not available due to respondent counts of less than 30.

2018 Florida BRFSS Data

**Cardiovascular Disease**

**Percentage of adults who have ever been told they had a stroke**

|                              |                       | Measure | 95% CI     |
|------------------------------|-----------------------|---------|------------|
| <b>ALL</b>                   | Overall               | 4.1     | 3.5 - 4.7  |
| <b>SEX</b>                   | Men                   | 4.7     | 3.7 - 5.8  |
|                              | Women                 | 3.4     | 2.8 - 4.1  |
| <b>RACE/ETHNICITY</b>        | Non-Hisp. White       | 4.3     | 3.7 - 5.0  |
|                              | Non-Hisp. Black       | 5.1     | 3.1 - 7.2  |
|                              | Hispanic              | 3.0     | 1.5 - 4.5  |
| <b>SEX BY RACE/ETHNICITY</b> | Non-Hisp. White Men   | 4.7     | 3.6 - 5.7  |
|                              | Non-Hisp. White Women | 4.0     | 3.2 - 4.8  |
|                              | Non-Hisp. Black Men   | 6.1     | 2.4 - 9.8  |
|                              | Non-Hisp. Black Women | 4.3     | 2.3 - 6.3  |
|                              | Hispanic Men          | 4.2     | 1.6 - 6.8  |
|                              | Hispanic Women        | 1.8     | 0.2 - 3.4  |
| <b>AGE GROUP</b>             | 18-44                 | 0.8     | 0.3 - 1.2  |
|                              | 45-64                 | 4.3     | 3.2 - 5.4  |
|                              | 65 & Older            | 9.0     | 7.4 - 10.7 |
| <b>EDUCATION LEVEL</b>       | <High School          | 6.5     | 4.0 - 9.1  |
|                              | High School / GED     | 4.9     | 3.5 - 6.2  |
|                              | >High School          | 3.1     | 2.6 - 3.6  |
| <b>ANNUAL INCOME</b>         | <\$25,000             | 7.5     | 5.7 - 9.4  |
|                              | \$25,000-\$49,999     | 3.4     | 2.2 - 4.6  |
|                              | \$50,000 or More      | 2.7     | 1.9 - 3.4  |
| <b>MARITAL STATUS</b>        | Married/Couple        | 3.9     | 3.0 - 4.8  |
|                              | Not Married/Couple    | 4.3     | 3.5 - 5.1  |

**Percentage of adults who have ever been told they had coronary heart disease, heart attack, or stroke**

|                              |                       | Measure | 95% CI      |
|------------------------------|-----------------------|---------|-------------|
| <b>ALL</b>                   | Overall               | 11.0    | 10.0 - 12.0 |
| <b>SEX</b>                   | Men                   | 13.5    | 11.8 - 15.2 |
|                              | Women                 | 8.6     | 7.5 - 9.8   |
| <b>RACE/ETHNICITY</b>        | Non-Hisp. White       | 12.5    | 11.4 - 13.5 |
|                              | Non-Hisp. Black       | 9.2     | 6.2 - 12.2  |
|                              | Hispanic              | 8.8     | 6.1 - 11.5  |
| <b>SEX BY RACE/ETHNICITY</b> | Non-Hisp. White Men   | 15.1    | 13.3 - 16.8 |
|                              | Non-Hisp. White Women | 10.0    | 8.7 - 11.3  |
|                              | Non-Hisp. Black Men   | 11.8    | 6.1 - 17.5  |
|                              | Non-Hisp. Black Women | 7.0     | 4.6 - 9.4   |
|                              | Hispanic Men          | 10.6    | 6.1 - 15.2  |
|                              | Hispanic Women        | 7.0     | 3.9 - 10.2  |
| <b>AGE GROUP</b>             | 18-44                 | 2.6     | 1.6 - 3.6   |
|                              | 45-64                 | 11.8    | 9.8 - 13.8  |
|                              | 65 & Older            | 23.6    | 21.2 - 25.9 |
| <b>EDUCATION LEVEL</b>       | <High School          | 16.5    | 12.4 - 20.7 |
|                              | High School / GED     | 12.0    | 10.1 - 13.9 |
|                              | >High School          | 9.2     | 8.1 - 10.4  |
| <b>ANNUAL INCOME</b>         | <\$25,000             | 15.9    | 13.4 - 18.4 |
|                              | \$25,000-\$49,999     | 12.7    | 10.0 - 15.4 |
|                              | \$50,000 or More      | 7.9     | 6.7 - 9.1   |
| <b>MARITAL STATUS</b>        | Married/Couple        | 11.5    | 10.0 - 13.0 |
|                              | Not Married/Couple    | 10.5    | 9.1 - 11.9  |

CI=Confidence Interval  
 NA=Not available due to respondent counts of less than 30.

2018 Florida BRFSS Data

**Cardiovascular Disease**

**Percentage of adults who have ever been told they had angina or coronary heart disease**

|                              |                       | Measure | 95% CI      |
|------------------------------|-----------------------|---------|-------------|
| <b>ALL</b>                   | Overall               | 5.2     | 4.5 - 5.9   |
| <b>SEX</b>                   | Men                   | 6.6     | 5.4 - 7.8   |
|                              | Women                 | 3.8     | 3.1 - 4.6   |
| <b>RACE/ETHNICITY</b>        | Non-Hisp. White       | 6.3     | 5.6 - 7.1   |
|                              | Non-Hisp. Black       | 3.8     | 1.5 - 6.1   |
|                              | Hispanic              | 3.6     | 1.8 - 5.4   |
| <b>SEX BY RACE/ETHNICITY</b> | Non-Hisp. White Men   | 8.0     | 6.8 - 9.2   |
|                              | Non-Hisp. White Women | 4.8     | 3.8 - 5.7   |
|                              | Non-Hisp. Black Men   | 5.6     | 1.0 - 10.2  |
|                              | Non-Hisp. Black Women | 2.2     | 0.9 - 3.5   |
|                              | Hispanic Men          | 4.2     | 1.3 - 7.2   |
|                              | Hispanic Women        | 3.0     | 1.0 - 5.0   |
| <b>AGE GROUP</b>             | 18-44                 | 1.2     | 0.4 - 1.9   |
|                              | 45-64                 | 5.4     | 3.9 - 6.8   |
|                              | 65 & Older            | 11.5    | 10.0 - 13.1 |
| <b>EDUCATION LEVEL</b>       | <High School          | 6.1     | 3.7 - 8.5   |
|                              | High School / GED     | 5.1     | 4.0 - 6.2   |
|                              | >High School          | 5.0     | 4.0 - 5.9   |
| <b>ANNUAL INCOME</b>         | <\$25,000             | 6.4     | 5.0 - 7.8   |
|                              | \$25,000-\$49,999     | 7.2     | 4.8 - 9.6   |
|                              | \$50,000 or More      | 4.1     | 3.3 - 5.0   |
| <b>MARITAL STATUS</b>        | Married/Couple        | 5.3     | 4.4 - 6.2   |
|                              | Not Married/Couple    | 5.1     | 4.0 - 6.2   |

**Percentage of adults who have ever been told they had a heart attack**

|                              |                       | Measure | 95% CI      |
|------------------------------|-----------------------|---------|-------------|
| <b>ALL</b>                   | Overall               | 6.0     | 5.2 - 6.9   |
| <b>SEX</b>                   | Men                   | 8.0     | 6.6 - 9.5   |
|                              | Women                 | 4.2     | 3.3 - 5.0   |
| <b>RACE/ETHNICITY</b>        | Non-Hisp. White       | 6.7     | 5.9 - 7.6   |
|                              | Non-Hisp. Black       | 3.5     | 1.4 - 5.7   |
|                              | Hispanic              | 5.7     | 3.3 - 8.1   |
| <b>SEX BY RACE/ETHNICITY</b> | Non-Hisp. White Men   | 8.7     | 7.3 - 10.1  |
|                              | Non-Hisp. White Women | 4.9     | 3.8 - 5.9   |
|                              | Non-Hisp. Black Men   | 4.6     | 0.4 - 8.8   |
|                              | Non-Hisp. Black Women | 2.6     | 1.2 - 4.1   |
|                              | Hispanic Men          | 8.0     | 3.6 - 12.3  |
|                              | Hispanic Women        | 3.6     | 1.4 - 5.8   |
| <b>AGE GROUP</b>             | 18-44                 | 1.4     | 0.6 - 2.2   |
|                              | 45-64                 | 7.0     | 5.3 - 8.6   |
|                              | 65 & Older            | 12.3    | 10.2 - 14.4 |
| <b>EDUCATION LEVEL</b>       | <High School          | 9.9     | 6.4 - 13.4  |
|                              | High School / GED     | 6.6     | 5.1 - 8.1   |
|                              | >High School          | 4.9     | 3.9 - 5.8   |
| <b>ANNUAL INCOME</b>         | <\$25,000             | 8.4     | 6.4 - 10.5  |
|                              | \$25,000-\$49,999     | 8.5     | 6.0 - 11.1  |
|                              | \$50,000 or More      | 3.6     | 2.8 - 4.4   |
| <b>MARITAL STATUS</b>        | Married/Couple        | 7.0     | 5.7 - 8.3   |
|                              | Not Married/Couple    | 4.9     | 3.9 - 6.0   |

CI=Confidence Interval  
 NA=Not available due to respondent counts of less than 30.



2018 Florida BRFSS Data

**Cholesterol Awareness**

**Percentage of adults who have ever been told that they have high blood cholesterol**

|                              |                       | Measure | 95% CI      |
|------------------------------|-----------------------|---------|-------------|
| <b>ALL</b>                   | Overall               | 34.1    | 32.4 - 35.8 |
| <b>SEX</b>                   | Men                   | 34.4    | 31.8 - 37.1 |
|                              | Women                 | 33.7    | 31.5 - 36.0 |
| <b>RACE/ETHNICITY</b>        | Non-Hisp. White       | 37.8    | 36.0 - 39.7 |
|                              | Non-Hisp. Black       | 27.8    | 23.0 - 32.5 |
|                              | Hispanic              | 30.8    | 26.0 - 35.6 |
| <b>SEX BY RACE/ETHNICITY</b> | Non-Hisp. White Men   | 37.8    | 35.0 - 40.7 |
|                              | Non-Hisp. White Women | 37.8    | 35.4 - 40.2 |
|                              | Non-Hisp. Black Men   | 29.7    | 22.0 - 37.4 |
|                              | Non-Hisp. Black Women | 26.2    | 20.2 - 32.1 |
|                              | Hispanic Men          | 32.9    | 25.9 - 40.0 |
|                              | Hispanic Women        | 28.7    | 22.2 - 35.3 |
| <b>AGE GROUP</b>             | 18-44                 | 17.7    | 14.9 - 20.4 |
|                              | 45-64                 | 40.7    | 37.5 - 43.8 |
|                              | 65 & Older            | 48.4    | 45.5 - 51.4 |
| <b>EDUCATION LEVEL</b>       | <High School          | 28.9    | 23.7 - 34.1 |
|                              | High School / GED     | 34.5    | 31.1 - 37.8 |
|                              | >High School          | 35.1    | 33.0 - 37.3 |
| <b>ANNUAL INCOME</b>         | <\$25,000             | 34.7    | 31.2 - 38.3 |
|                              | \$25,000-\$49,999     | 30.2    | 26.7 - 33.8 |
|                              | \$50,000 or More      | 36.5    | 33.6 - 39.3 |
| <b>MARITAL STATUS</b>        | Married/Couple        | 35.5    | 33.2 - 37.9 |
|                              | Not Married/Couple    | 32.4    | 29.8 - 34.9 |

**Percentage of adults who have had their cholesterol checked in the past five years**

|                              |                       | Measure | 95% CI      |
|------------------------------|-----------------------|---------|-------------|
| <b>ALL</b>                   | Overall               | 87.2    | 86.0 - 88.4 |
| <b>SEX</b>                   | Men                   | 84.2    | 82.1 - 86.2 |
|                              | Women                 | 90.0    | 88.6 - 91.4 |
| <b>RACE/ETHNICITY</b>        | Non-Hisp. White       | 87.0    | 85.5 - 88.4 |
|                              | Non-Hisp. Black       | 88.0    | 84.8 - 91.3 |
|                              | Hispanic              | 89.3    | 86.5 - 92.0 |
| <b>SEX BY RACE/ETHNICITY</b> | Non-Hisp. White Men   | 84.4    | 82.0 - 86.7 |
|                              | Non-Hisp. White Women | 89.4    | 87.6 - 91.1 |
|                              | Non-Hisp. Black Men   | 87.0    | 81.7 - 92.2 |
|                              | Non-Hisp. Black Women | 88.9    | 84.8 - 92.9 |
|                              | Hispanic Men          | 84.4    | 79.4 - 89.4 |
|                              | Hispanic Women        | 94.0    | 91.5 - 96.4 |
| <b>AGE GROUP</b>             | 18-44                 | 77.6    | 74.8 - 80.3 |
|                              | 45-64                 | 91.0    | 89.3 - 92.7 |
|                              | 65 & Older            | 94.5    | 93.3 - 95.7 |
| <b>EDUCATION LEVEL</b>       | <High School          | 82.7    | 78.1 - 87.3 |
|                              | High School / GED     | 85.0    | 82.6 - 87.5 |
|                              | >High School          | 89.3    | 88.0 - 90.7 |
| <b>ANNUAL INCOME</b>         | <\$25,000             | 85.6    | 83.2 - 88.1 |
|                              | \$25,000-\$49,999     | 83.9    | 81.0 - 86.8 |
|                              | \$50,000 or More      | 91.1    | 89.3 - 92.8 |
| <b>MARITAL STATUS</b>        | Married/Couple        | 90.1    | 88.6 - 91.6 |
|                              | Not Married/Couple    | 84.1    | 82.1 - 86.1 |

CI=Confidence Interval  
 NA=Not available due to respondent counts of less than 30.

2018 Florida BRFSS Data

**Cholesterol Awareness**

Percentage of adults who have ever been told that they have high blood cholesterol among adults who had their cholesterol checked within the past five years

|                              |                       | Measure | 95% CI      |
|------------------------------|-----------------------|---------|-------------|
| <b>ALL</b>                   | Overall               | 40.7    | 38.7 - 42.7 |
| <b>SEX</b>                   | Men                   | 41.7    | 38.6 - 44.9 |
|                              | Women                 | 39.8    | 37.1 - 42.5 |
| <b>RACE/ETHNICITY</b>        | Non-Hisp. White       | 44.3    | 42.3 - 46.4 |
|                              | Non-Hisp. Black       | 33.8    | 28.1 - 39.6 |
|                              | Hispanic              | 37.2    | 31.4 - 43.0 |
| <b>SEX BY RACE/ETHNICITY</b> | Non-Hisp. White Men   | 45.1    | 41.9 - 48.3 |
|                              | Non-Hisp. White Women | 43.7    | 41.0 - 46.4 |
|                              | Non-Hisp. Black Men   | 33.8    | 24.7 - 43.0 |
|                              | Non-Hisp. Black Women | 33.8    | 26.5 - 41.1 |
|                              | Hispanic Men          | 41.5    | 32.8 - 50.1 |
|                              | Hispanic Women        | 33.5    | 25.8 - 41.1 |
| <b>AGE GROUP</b>             | 18-44                 | 24.5    | 20.7 - 28.3 |
|                              | 45-64                 | 44.6    | 41.2 - 48.1 |
|                              | 65 & Older            | 52.1    | 49.0 - 55.2 |
| <b>EDUCATION LEVEL</b>       | <High School          | 36.4    | 29.5 - 43.2 |
|                              | High School / GED     | 42.4    | 38.4 - 46.4 |
|                              | >High School          | 40.7    | 38.3 - 43.1 |
| <b>ANNUAL INCOME</b>         | <\$25,000             | 42.7    | 38.4 - 47.0 |
|                              | \$25,000-\$49,999     | 38.1    | 33.8 - 42.5 |
|                              | \$50,000 or More      | 40.6    | 37.5 - 43.7 |
| <b>MARITAL STATUS</b>        | Married/Couple        | 40.5    | 37.8 - 43.1 |
|                              | Not Married/Couple    | 40.9    | 37.8 - 44.0 |

CI=Confidence Interval

NA=Not available due to respondent counts of less than 30.

2018 Florida BRFSS Data

**Cholesterol Awareness**

**Percentage of adults who have had their cholesterol checked in the past two years**

|                              |                       | Measure | 95% CI      |
|------------------------------|-----------------------|---------|-------------|
| <b>ALL</b>                   | Overall               | 82.1    | 80.7 - 83.5 |
| <b>SEX</b>                   | Men                   | 79.2    | 76.9 - 81.4 |
|                              | Women                 | 84.7    | 83.0 - 86.5 |
| <b>RACE/ETHNICITY</b>        | Non-Hisp. White       | 82.0    | 80.4 - 83.6 |
|                              | Non-Hisp. Black       | 83.9    | 80.1 - 87.7 |
|                              | Hispanic              | 82.9    | 79.3 - 86.5 |
| <b>SEX BY RACE/ETHNICITY</b> | Non-Hisp. White Men   | 80.6    | 78.2 - 83.1 |
|                              | Non-Hisp. White Women | 83.3    | 81.1 - 85.4 |
|                              | Non-Hisp. Black Men   | 83.9    | 78.3 - 89.5 |
|                              | Non-Hisp. Black Women | 83.9    | 78.7 - 89.1 |
|                              | Hispanic Men          | 75.8    | 69.7 - 81.9 |
|                              | Hispanic Women        | 89.8    | 86.2 - 93.3 |
| <b>AGE GROUP</b>             | 18-44                 | 68.4    | 65.2 - 71.6 |
|                              | 45-64                 | 86.9    | 84.9 - 88.8 |
|                              | 65 & Older            | 92.9    | 91.6 - 94.3 |
| <b>EDUCATION LEVEL</b>       | <High School          | 77.2    | 72.1 - 82.3 |
|                              | High School / GED     | 78.3    | 75.4 - 81.2 |
|                              | >High School          | 85.1    | 83.5 - 86.7 |
| <b>ANNUAL INCOME</b>         | <\$25,000             | 78.6    | 75.7 - 81.6 |
|                              | \$25,000-\$49,999     | 79.2    | 76.0 - 82.3 |
|                              | \$50,000 or More      | 86.2    | 84.1 - 88.4 |
| <b>MARITAL STATUS</b>        | Married/Couple        | 85.7    | 84.0 - 87.4 |
|                              | Not Married/Couple    | 78.1    | 75.8 - 80.4 |

CI=Confidence Interval

NA=Not available due to respondent counts of less than 30.

**Chronic Obstructive Pulmonary Disease (COPD)**

Percentage of adults who have ever been told they had chronic obstructive pulmonary disease, emphysema, or chronic bronchitis

|                              |                       | Measure | 95% CI      |
|------------------------------|-----------------------|---------|-------------|
| <b>ALL</b>                   | Overall               | 8.3     | 7.5 - 9.1   |
| <b>SEX</b>                   | Men                   | 6.7     | 5.6 - 7.9   |
|                              | Women                 | 9.7     | 8.5 - 10.9  |
| <b>RACE/ETHNICITY</b>        | Non-Hisp. White       | 9.9     | 9.0 - 10.9  |
|                              | Non-Hisp. Black       | 5.3     | 3.2 - 7.4   |
|                              | Hispanic              | 6.4     | 4.2 - 8.7   |
| <b>SEX BY RACE/ETHNICITY</b> | Non-Hisp. White Men   | 8.5     | 7.1 - 9.8   |
|                              | Non-Hisp. White Women | 11.3    | 10.0 - 12.6 |
|                              | Non-Hisp. Black Men   | 3.6     | 0.8 - 6.4   |
|                              | Non-Hisp. Black Women | 6.8     | 3.7 - 9.9   |
|                              | Hispanic Men          | 5.2     | 2.4 - 7.9   |
|                              | Hispanic Women        | 7.6     | 4.2 - 11.1  |
| <b>AGE GROUP</b>             | 18-44                 | 3.8     | 2.8 - 4.9   |
|                              | 45-64                 | 9.2     | 7.7 - 10.7  |
|                              | 65 & Older            | 14.1    | 12.2 - 16.0 |
| <b>EDUCATION LEVEL</b>       | <High School          | 10.9    | 7.5 - 14.3  |
|                              | High School / GED     | 9.9     | 8.3 - 11.6  |
|                              | >High School          | 6.8     | 6.0 - 7.7   |
| <b>ANNUAL INCOME</b>         | <\$25,000             | 12.8    | 10.6 - 14.9 |
|                              | \$25,000-\$49,999     | 7.8     | 6.3 - 9.2   |
|                              | \$50,000 or More      | 5.9     | 4.7 - 7.0   |
| <b>MARITAL STATUS</b>        | Married/Couple        | 7.1     | 6.1 - 8.2   |
|                              | Not Married/Couple    | 9.6     | 8.3 - 10.9  |

CI=Confidence Interval  
 NA=Not available due to respondent counts of less than 30.

2018 Florida BRFSS Data

**Depression**

**Percentage of adults who have ever been told they had a depressive disorder**

|                              |                       | Measure | 95% CI      |
|------------------------------|-----------------------|---------|-------------|
| <b>ALL</b>                   | Overall               | 15.6    | 14.5 - 16.7 |
| <b>SEX</b>                   | Men                   | 10.8    | 9.4 - 12.1  |
|                              | Women                 | 20.1    | 18.4 - 21.9 |
| <b>RACE/ETHNICITY</b>        | Non-Hisp. White       | 17.6    | 16.3 - 18.9 |
|                              | Non-Hisp. Black       | 10.9    | 8.1 - 13.6  |
|                              | Hispanic              | 14.1    | 11.2 - 17.0 |
| <b>SEX BY RACE/ETHNICITY</b> | Non-Hisp. White Men   | 12.7    | 10.9 - 14.5 |
|                              | Non-Hisp. White Women | 22.2    | 20.3 - 24.1 |
|                              | Non-Hisp. Black Men   | 5.5     | 3.1 - 7.8   |
|                              | Non-Hisp. Black Women | 15.7    | 11.1 - 20.4 |
|                              | Hispanic Men          | 9.6     | 6.2 - 13.0  |
|                              | Hispanic Women        | 18.4    | 13.8 - 23.0 |
| <b>AGE GROUP</b>             | 18-44                 | 16.3    | 14.4 - 18.2 |
|                              | 45-64                 | 18.0    | 15.9 - 20.1 |
|                              | 65 & Older            | 12.2    | 10.5 - 14.0 |
| <b>EDUCATION LEVEL</b>       | <High School          | 19.7    | 15.3 - 24.2 |
|                              | High School / GED     | 16.0    | 13.8 - 18.1 |
|                              | >High School          | 14.5    | 13.3 - 15.8 |
| <b>ANNUAL INCOME</b>         | <\$25,000             | 21.9    | 19.3 - 24.5 |
|                              | \$25,000-\$49,999     | 15.2    | 12.8 - 17.5 |
|                              | \$50,000 or More      | 12.4    | 10.8 - 14.0 |
| <b>MARITAL STATUS</b>        | Married/Couple        | 12.8    | 11.4 - 14.2 |
|                              | Not Married/Couple    | 18.9    | 17.1 - 20.7 |

CI=Confidence Interval

NA=Not available due to respondent counts of less than 30.

2018 Florida BRFSS Data

**Diabetes**

**Percentage of adults who have ever been told they had diabetes**

|                              |                       | Measure | 95% CI      |
|------------------------------|-----------------------|---------|-------------|
| <b>ALL</b>                   | Overall               | 12.6    | 11.6 - 13.6 |
| <b>SEX</b>                   | Men                   | 13.6    | 12.0 - 15.2 |
|                              | Women                 | 11.7    | 10.4 - 13.0 |
| <b>RACE/ETHNICITY</b>        | Non-Hisp. White       | 12.2    | 11.2 - 13.3 |
|                              | Non-Hisp. Black       | 15.4    | 11.9 - 18.8 |
|                              | Hispanic              | 11.8    | 9.3 - 14.4  |
| <b>SEX BY RACE/ETHNICITY</b> | Non-Hisp. White Men   | 14.0    | 12.3 - 15.7 |
|                              | Non-Hisp. White Women | 10.6    | 9.3 - 11.8  |
|                              | Non-Hisp. Black Men   | 16.4    | 10.6 - 22.2 |
|                              | Non-Hisp. Black Women | 14.5    | 10.6 - 18.4 |
|                              | Hispanic Men          | 10.7    | 7.0 - 14.4  |
|                              | Hispanic Women        | 13.0    | 9.4 - 16.5  |
| <b>AGE GROUP</b>             | 18-44                 | 4.0     | 2.8 - 5.2   |
|                              | 45-64                 | 14.9    | 12.9 - 16.8 |
|                              | 65 & Older            | 23.5    | 21.3 - 25.8 |
| <b>EDUCATION LEVEL</b>       | <High School          | 18.0    | 14.1 - 21.9 |
|                              | High School / GED     | 12.5    | 10.7 - 14.3 |
|                              | >High School          | 11.4    | 10.2 - 12.6 |
| <b>ANNUAL INCOME</b>         | <\$25,000             | 17.6    | 15.2 - 20.0 |
|                              | \$25,000-\$49,999     | 12.1    | 9.9 - 14.3  |
|                              | \$50,000 or More      | 9.4     | 8.0 - 10.8  |
| <b>MARITAL STATUS</b>        | Married/Couple        | 12.3    | 11.0 - 13.7 |
|                              | Not Married/Couple    | 13.0    | 11.5 - 14.5 |

**Percentage of adults who have ever been told they had pre-diabetes**

|                              |                       | Measure | 95% CI      |
|------------------------------|-----------------------|---------|-------------|
| <b>ALL</b>                   | Overall               | 10.8    | 9.6 - 11.9  |
| <b>SEX</b>                   | Men                   | 10.7    | 9.0 - 12.3  |
|                              | Women                 | 10.9    | 9.3 - 12.4  |
| <b>RACE/ETHNICITY</b>        | Non-Hisp. White       | 10.8    | 9.6 - 11.9  |
|                              | Non-Hisp. Black       | 12.2    | 8.7 - 15.7  |
|                              | Hispanic              | 10.6    | 7.5 - 13.8  |
| <b>SEX BY RACE/ETHNICITY</b> | Non-Hisp. White Men   | 10.2    | 8.5 - 11.8  |
|                              | Non-Hisp. White Women | 11.3    | 9.7 - 12.9  |
|                              | Non-Hisp. Black Men   | 12.4    | 7.1 - 17.8  |
|                              | Non-Hisp. Black Women | 12.0    | 7.4 - 16.6  |
|                              | Hispanic Men          | 10.8    | 6.5 - 15.1  |
|                              | Hispanic Women        | 10.5    | 6.1 - 15.0  |
| <b>AGE GROUP</b>             | 18-44                 | 6.4     | 4.6 - 8.2   |
|                              | 45-64                 | 12.8    | 10.8 - 14.8 |
|                              | 65 & Older            | 14.4    | 12.3 - 16.5 |
| <b>EDUCATION LEVEL</b>       | <High School          | 12.4    | 8.4 - 16.5  |
|                              | High School / GED     | 11.0    | 8.6 - 13.3  |
|                              | >High School          | 10.3    | 9.1 - 11.5  |
| <b>ANNUAL INCOME</b>         | <\$25,000             | 11.5    | 9.1 - 14.0  |
|                              | \$25,000-\$49,999     | 11.7    | 9.2 - 14.2  |
|                              | \$50,000 or More      | 11.0    | 9.1 - 13.0  |
| <b>MARITAL STATUS</b>        | Married/Couple        | 11.6    | 10.0 - 13.3 |
|                              | Not Married/Couple    | 9.7     | 8.2 - 11.3  |

CI=Confidence Interval  
 NA=Not available due to respondent counts of less than 30.

2018 Florida BRFSS Data

**Diabetes**

**Percentage of adults that have had a test for high blood sugar or diabetes within the past 3 years**

|                              |                       | Measure | 95% CI      |
|------------------------------|-----------------------|---------|-------------|
| <b>ALL</b>                   | Overall               | 59.2    | 57.3 - 61.2 |
| <b>SEX</b>                   | Men                   | 57.3    | 54.4 - 60.2 |
|                              | Women                 | 60.9    | 58.3 - 63.5 |
| <b>RACE/ETHNICITY</b>        | Non-Hisp. White       | 59.8    | 57.8 - 61.8 |
|                              | Non-Hisp. Black       | 54.7    | 49.0 - 60.5 |
|                              | Hispanic              | 62.4    | 57.3 - 67.4 |
| <b>SEX BY RACE/ETHNICITY</b> | Non-Hisp. White Men   | 58.7    | 55.6 - 61.8 |
|                              | Non-Hisp. White Women | 60.7    | 58.1 - 63.4 |
|                              | Non-Hisp. Black Men   | 54.6    | 46.2 - 63.0 |
|                              | Non-Hisp. Black Women | 54.8    | 46.9 - 62.7 |
|                              | Hispanic Men          | 58.9    | 51.7 - 66.1 |
|                              | Hispanic Women        | 65.7    | 58.7 - 72.8 |
| <b>AGE GROUP</b>             | 18-44                 | 46.8    | 43.4 - 50.1 |
|                              | 45-64                 | 66.4    | 63.2 - 69.7 |
|                              | 65 & Older            | 71.6    | 68.6 - 74.5 |
| <b>EDUCATION LEVEL</b>       | <High School          | 55.6    | 49.0 - 62.2 |
|                              | High School / GED     | 54.6    | 50.9 - 58.4 |
|                              | >High School          | 62.6    | 60.3 - 64.9 |
| <b>ANNUAL INCOME</b>         | <\$25,000             | 61.3    | 57.4 - 65.1 |
|                              | \$25,000-\$49,999     | 54.9    | 50.6 - 59.2 |
|                              | \$50,000 or More      | 64.1    | 61.0 - 67.1 |
| <b>MARITAL STATUS</b>        | Married/Couple        | 64.4    | 61.8 - 67.0 |
|                              | Not Married/Couple    | 53.8    | 50.9 - 56.7 |

**Percentage of adults with diabetes who ever had diabetes self-management education**

|                              |                       | Measure | 95% CI      |
|------------------------------|-----------------------|---------|-------------|
| <b>ALL</b>                   | Overall               | 56.8    | 52.3 - 61.3 |
| <b>SEX</b>                   | Men                   | 58.3    | 51.8 - 64.9 |
|                              | Women                 | 55.3    | 49.2 - 61.4 |
| <b>RACE/ETHNICITY</b>        | Non-Hisp. White       | 59.1    | 54.3 - 63.9 |
|                              | Non-Hisp. Black       | 59.1    | 47.3 - 71.0 |
|                              | Hispanic              | 42.9    | 29.0 - 56.9 |
| <b>SEX BY RACE/ETHNICITY</b> | Non-Hisp. White Men   | 59.1    | 51.9 - 66.3 |
|                              | Non-Hisp. White Women | 59.1    | 52.6 - 65.5 |
|                              | Non-Hisp. Black Men   | 68.5    | 51.4 - 85.5 |
|                              | Non-Hisp. Black Women | 51.9    | 37.8 - 66.0 |
|                              | Hispanic Men          | 42.0    | 21.5 - 62.6 |
|                              | Hispanic Women        | 43.7    | 25.3 - 62.2 |
| <b>AGE GROUP</b>             | 18-44                 | 57.3    | 39.4 - 75.1 |
|                              | 45-64                 | 60.3    | 52.8 - 67.7 |
|                              | 65 & Older            | 53.8    | 48.0 - 59.6 |
| <b>EDUCATION LEVEL</b>       | <High School          | 47.0    | 33.1 - 61.0 |
|                              | High School / GED     | 54.1    | 46.0 - 62.2 |
|                              | >High School          | 62.3    | 56.5 - 68.1 |
| <b>ANNUAL INCOME</b>         | <\$25,000             | 54.1    | 46.1 - 62.1 |
|                              | \$25,000-\$49,999     | 57.9    | 48.1 - 67.7 |
|                              | \$50,000 or More      | 63.2    | 55.4 - 71.0 |
| <b>MARITAL STATUS</b>        | Married/Couple        | 55.7    | 49.6 - 61.8 |
|                              | Not Married/Couple    | 58.0    | 51.1 - 64.9 |

CI=Confidence Interval  
 NA=Not available due to respondent counts of less than 30.

2018 Florida BRFSS Data

**Diabetes**

**Average age at which diabetes was diagnosed**

|                              |                       | <b>Measure</b> | <b>95% CI</b> |
|------------------------------|-----------------------|----------------|---------------|
| <b>ALL</b>                   | Overall               | 47.5           | 46.1 - 49.0   |
| <b>SEX</b>                   | Men                   | 47.8           | 45.7 - 49.8   |
|                              | Women                 | 47.3           | 45.2 - 49.4   |
| <b>RACE/ETHNICITY</b>        | Non-Hisp. White       | 50.2           | 48.7 - 51.7   |
|                              | Non-Hisp. Black       | 43.3           | 39.2 - 47.4   |
|                              | Hispanic              | 44.2           | 40.4 - 48.1   |
| <b>SEX BY RACE/ETHNICITY</b> | Non-Hisp. White Men   | 50.1           | 48.0 - 52.2   |
|                              | Non-Hisp. White Women | 50.3           | 48.3 - 52.3   |
|                              | Non-Hisp. Black Men   | 42.0           | 35.8 - 48.1   |
|                              | Non-Hisp. Black Women | 44.7           | 39.0 - 50.5   |
|                              | Hispanic Men          | 46.1           | 40.5 - 51.7   |
|                              | Hispanic Women        | 42.8           | 37.5 - 48.2   |
| <b>AGE GROUP</b>             | 18-44                 | 26.1           | 23.6 - 28.6   |
|                              | 45-64                 | 44.6           | 43.0 - 46.1   |
|                              | 65 & Older            | 55.9           | 54.1 - 57.6   |
| <b>EDUCATION LEVEL</b>       | <High School          | 45.4           | 41.8 - 49.0   |
|                              | High School / GED     | 46.3           | 43.6 - 49.0   |
|                              | >High School          | 48.9           | 47.2 - 50.5   |
| <b>ANNUAL INCOME</b>         | <\$25,000             | 46.2           | 43.9 - 48.5   |
|                              | \$25,000-\$49,999     | 48.2           | 45.9 - 50.5   |
|                              | \$50,000 or More      | 48.3           | 45.6 - 51.1   |
| <b>MARITAL STATUS</b>        | Married/Couple        | 47.9           | 46.0 - 49.7   |
|                              | Not Married/Couple    | 47.1           | 44.8 - 49.4   |

CI=Confidence Interval

NA=Not available due to respondent counts of less than 30.



2018 Florida BRFSS Data

**Disability**

**Percentage of adults who are blind or have serious difficulty seeing, even when wearing glasses**

|                              |                       | Measure | 95% CI     |
|------------------------------|-----------------------|---------|------------|
| <b>ALL</b>                   | Overall               | 6.1     | 5.3 - 6.9  |
| <b>SEX</b>                   | Men                   | 5.1     | 4.0 - 6.2  |
|                              | Women                 | 7.0     | 5.9 - 8.1  |
| <b>RACE/ETHNICITY</b>        | Non-Hisp. White       | 5.3     | 4.5 - 6.1  |
|                              | Non-Hisp. Black       | 6.3     | 4.2 - 8.5  |
|                              | Hispanic              | 7.9     | 5.6 - 10.2 |
| <b>SEX BY RACE/ETHNICITY</b> | Non-Hisp. White Men   | 4.5     | 3.4 - 5.5  |
|                              | Non-Hisp. White Women | 6.1     | 4.9 - 7.2  |
|                              | Non-Hisp. Black Men   | 6.5     | 3.2 - 9.8  |
|                              | Non-Hisp. Black Women | 6.2     | 3.4 - 9.0  |
|                              | Hispanic Men          | 5.7     | 2.5 - 8.9  |
|                              | Hispanic Women        | 10.0    | 6.8 - 13.2 |
| <b>AGE GROUP</b>             | 18-44                 | 4.1     | 3.0 - 5.2  |
|                              | 45-64                 | 7.3     | 5.8 - 8.7  |
|                              | 65 & Older            | 8.0     | 6.4 - 9.6  |
| <b>EDUCATION LEVEL</b>       | <High School          | 13.5    | 9.7 - 17.4 |
|                              | High School / GED     | 6.0     | 4.6 - 7.3  |
|                              | >High School          | 4.5     | 3.8 - 5.2  |
| <b>ANNUAL INCOME</b>         | <\$25,000             | 10.5    | 8.4 - 12.6 |
|                              | \$25,000-\$49,999     | 5.5     | 3.9 - 7.1  |
|                              | \$50,000 or More      | 3.3     | 2.4 - 4.2  |
| <b>MARITAL STATUS</b>        | Married/Couple        | 5.1     | 4.1 - 6.1  |
|                              | Not Married/Couple    | 7.2     | 6.0 - 8.3  |

**Percentage of adults who are deaf or have serious difficulty hearing**

|                              |                       | Measure | 95% CI      |
|------------------------------|-----------------------|---------|-------------|
| <b>ALL</b>                   | Overall               | 7.3     | 6.5 - 8.1   |
| <b>SEX</b>                   | Men                   | 9.4     | 8.0 - 10.8  |
|                              | Women                 | 5.4     | 4.5 - 6.2   |
| <b>RACE/ETHNICITY</b>        | Non-Hisp. White       | 8.9     | 8.0 - 9.8   |
|                              | Non-Hisp. Black       | 4.0     | 2.2 - 5.9   |
|                              | Hispanic              | 5.6     | 3.4 - 7.9   |
| <b>SEX BY RACE/ETHNICITY</b> | Non-Hisp. White Men   | 11.4    | 9.9 - 12.8  |
|                              | Non-Hisp. White Women | 6.5     | 5.5 - 7.6   |
|                              | Non-Hisp. Black Men   | 4.9     | 1.5 - 8.2   |
|                              | Non-Hisp. Black Women | 3.3     | 1.4 - 5.2   |
|                              | Hispanic Men          | 7.6     | 3.6 - 11.6  |
|                              | Hispanic Women        | 3.8     | 1.7 - 6.0   |
| <b>AGE GROUP</b>             | 18-44                 | 2.3     | 1.4 - 3.1   |
|                              | 45-64                 | 7.9     | 6.2 - 9.6   |
|                              | 65 & Older            | 14.7    | 13.0 - 16.5 |
| <b>EDUCATION LEVEL</b>       | <High School          | 10.7    | 7.3 - 14.1  |
|                              | High School / GED     | 7.8     | 6.2 - 9.4   |
|                              | >High School          | 6.3     | 5.5 - 7.1   |
| <b>ANNUAL INCOME</b>         | <\$25,000             | 9.5     | 7.5 - 11.5  |
|                              | \$25,000-\$49,999     | 6.1     | 4.8 - 7.4   |
|                              | \$50,000 or More      | 6.5     | 5.2 - 7.7   |
| <b>MARITAL STATUS</b>        | Married/Couple        | 7.8     | 6.6 - 9.0   |
|                              | Not Married/Couple    | 6.5     | 5.6 - 7.5   |

CI=Confidence Interval  
 NA=Not available due to respondent counts of less than 30.

2018 Florida BRFSS Data

**Disability**

**Percentage of adults that have serious difficulty concentrating, remembering or making decisions due to a physical, mental, or emotional condition**

|                              |                       | Measure | 95% CI      |
|------------------------------|-----------------------|---------|-------------|
| <b>ALL</b>                   | Overall               | 12.9    | 11.8 - 14.0 |
| <b>SEX</b>                   | Men                   | 12.0    | 10.3 - 13.6 |
|                              | Women                 | 13.7    | 12.2 - 15.2 |
| <b>RACE/ETHNICITY</b>        | Non-Hisp. White       | 12.5    | 11.3 - 13.7 |
|                              | Non-Hisp. Black       | 13.7    | 10.3 - 17.2 |
|                              | Hispanic              | 13.5    | 10.5 - 16.6 |
| <b>SEX BY RACE/ETHNICITY</b> | Non-Hisp. White Men   | 11.1    | 9.4 - 12.8  |
|                              | Non-Hisp. White Women | 13.8    | 12.2 - 15.4 |
|                              | Non-Hisp. Black Men   | 12.4    | 7.7 - 17.0  |
|                              | Non-Hisp. Black Women | 14.9    | 10.0 - 19.8 |
|                              | Hispanic Men          | 13.8    | 9.1 - 18.4  |
|                              | Hispanic Women        | 13.4    | 9.5 - 17.3  |
| <b>AGE GROUP</b>             | 18-44                 | 12.9    | 11.0 - 14.9 |
|                              | 45-64                 | 14.3    | 12.4 - 16.2 |
|                              | 65 & Older            | 11.5    | 9.6 - 13.4  |
| <b>EDUCATION LEVEL</b>       | <High School          | 25.0    | 20.3 - 29.8 |
|                              | High School / GED     | 14.1    | 11.9 - 16.2 |
|                              | >High School          | 9.7     | 8.5 - 10.8  |
| <b>ANNUAL INCOME</b>         | <\$25,000             | 22.3    | 19.4 - 25.2 |
|                              | \$25,000-\$49,999     | 10.1    | 8.3 - 11.9  |
|                              | \$50,000 or More      | 6.4     | 5.1 - 7.7   |
| <b>MARITAL STATUS</b>        | Married/Couple        | 9.7     | 8.3 - 11.0  |
|                              | Not Married/Couple    | 16.6    | 14.8 - 18.4 |

CI=Confidence Interval  
 NA=Not available due to respondent counts of less than 30.

2018 Florida BRFSS Data

**Disability**

**Percentage of adults that have serious difficulty walking or climbing stairs**

|                              |                       | Measure | 95% CI      |
|------------------------------|-----------------------|---------|-------------|
| <b>ALL</b>                   | Overall               | 15.6    | 14.5 - 16.7 |
| <b>SEX</b>                   | Men                   | 13.6    | 12.0 - 15.2 |
|                              | Women                 | 17.4    | 15.9 - 19.0 |
| <b>RACE/ETHNICITY</b>        | Non-Hisp. White       | 16.1    | 14.9 - 17.3 |
|                              | Non-Hisp. Black       | 16.8    | 13.1 - 20.4 |
|                              | Hispanic              | 14.0    | 11.0 - 17.0 |
| <b>SEX BY RACE/ETHNICITY</b> | Non-Hisp. White Men   | 14.4    | 12.6 - 16.2 |
|                              | Non-Hisp. White Women | 17.7    | 16.1 - 19.4 |
|                              | Non-Hisp. Black Men   | 15.7    | 10.2 - 21.2 |
|                              | Non-Hisp. Black Women | 17.6    | 12.8 - 22.5 |
|                              | Hispanic Men          | 10.7    | 6.6 - 14.8  |
|                              | Hispanic Women        | 17.1    | 12.7 - 21.5 |
| <b>AGE GROUP</b>             | 18-44                 | 5.1     | 3.9 - 6.3   |
|                              | 45-64                 | 21.2    | 18.8 - 23.7 |
|                              | 65 & Older            | 25.4    | 23.1 - 27.6 |
| <b>EDUCATION LEVEL</b>       | <High School          | 30.0    | 24.8 - 35.2 |
|                              | High School / GED     | 17.1    | 15.0 - 19.3 |
|                              | >High School          | 11.6    | 10.5 - 12.7 |
| <b>ANNUAL INCOME</b>         | <\$25,000             | 27.0    | 24.0 - 30.0 |
|                              | \$25,000-\$49,999     | 16.3    | 13.7 - 18.8 |
|                              | \$50,000 or More      | 7.4     | 6.3 - 8.5   |
| <b>MARITAL STATUS</b>        | Married/Couple        | 13.0    | 11.6 - 14.5 |
|                              | Not Married/Couple    | 18.5    | 16.7 - 20.3 |

**Percentage of adults that have difficulty dressing or bathing**

|                              |                       | Measure | 95% CI     |
|------------------------------|-----------------------|---------|------------|
| <b>ALL</b>                   | Overall               | 4.0     | 3.4 - 4.6  |
| <b>SEX</b>                   | Men                   | 4.3     | 3.4 - 5.3  |
|                              | Women                 | 3.8     | 3.1 - 4.5  |
| <b>RACE/ETHNICITY</b>        | Non-Hisp. White       | 4.0     | 3.3 - 4.6  |
|                              | Non-Hisp. Black       | 6.1     | 3.5 - 8.6  |
|                              | Hispanic              | 2.8     | 1.7 - 3.9  |
| <b>SEX BY RACE/ETHNICITY</b> | Non-Hisp. White Men   | 3.9     | 2.9 - 4.9  |
|                              | Non-Hisp. White Women | 4.0     | 3.2 - 4.8  |
|                              | Non-Hisp. Black Men   | 7.4     | 3.1 - 11.7 |
|                              | Non-Hisp. Black Women | 4.9     | 1.9 - 7.9  |
|                              | Hispanic Men          | 3.5     | 1.5 - 5.6  |
|                              | Hispanic Women        | 2.1     | 1.1 - 3.1  |
| <b>AGE GROUP</b>             | 18-44                 | 2.2     | 1.3 - 3.2  |
|                              | 45-64                 | 5.9     | 4.7 - 7.1  |
|                              | 65 & Older            | 4.7     | 3.7 - 5.7  |
| <b>EDUCATION LEVEL</b>       | <High School          | 10.2    | 6.8 - 13.6 |
|                              | High School / GED     | 3.7     | 2.8 - 4.5  |
|                              | >High School          | 2.8     | 2.3 - 3.4  |
| <b>ANNUAL INCOME</b>         | <\$25,000             | 8.0     | 6.3 - 9.7  |
|                              | \$25,000-\$49,999     | 3.1     | 2.1 - 4.1  |
|                              | \$50,000 or More      | 1.9     | 1.2 - 2.6  |
| <b>MARITAL STATUS</b>        | Married/Couple        | 3.3     | 2.6 - 4.0  |
|                              | Not Married/Couple    | 4.7     | 3.8 - 5.7  |

CI=Confidence Interval  
 NA=Not available due to respondent counts of less than 30.

2018 Florida BRFSS Data

**Disability**

**Percentage of adults that have difficulty doing errands alone such as visiting a doctor's office or shopping**

|                              |                       | Measure | 95% CI      |
|------------------------------|-----------------------|---------|-------------|
| <b>ALL</b>                   | Overall               | 7.5     | 6.6 - 8.3   |
| <b>SEX</b>                   | Men                   | 5.8     | 4.7 - 6.9   |
|                              | Women                 | 9.0     | 7.8 - 10.2  |
| <b>RACE/ETHNICITY</b>        | Non-Hisp. White       | 8.1     | 7.1 - 9.0   |
|                              | Non-Hisp. Black       | 7.3     | 4.8 - 9.9   |
|                              | Hispanic              | 6.3     | 4.3 - 8.3   |
| <b>SEX BY RACE/ETHNICITY</b> | Non-Hisp. White Men   | 6.0     | 4.7 - 7.3   |
|                              | Non-Hisp. White Women | 10.1    | 8.7 - 11.5  |
|                              | Non-Hisp. Black Men   | 7.3     | 3.7 - 10.9  |
|                              | Non-Hisp. Black Women | 7.4     | 3.7 - 11.0  |
|                              | Hispanic Men          | 4.8     | 2.1 - 7.6   |
|                              | Hispanic Women        | 7.7     | 4.8 - 10.7  |
| <b>AGE GROUP</b>             | 18-44                 | 5.2     | 4.0 - 6.5   |
|                              | 45-64                 | 8.8     | 7.3 - 10.3  |
|                              | 65 & Older            | 9.3     | 7.7 - 11.0  |
| <b>EDUCATION LEVEL</b>       | <High School          | 13.4    | 9.6 - 17.2  |
|                              | High School / GED     | 9.0     | 7.4 - 10.7  |
|                              | >High School          | 5.4     | 4.6 - 6.2   |
| <b>ANNUAL INCOME</b>         | <\$25,000             | 13.9    | 11.8 - 16.1 |
|                              | \$25,000-\$49,999     | 6.2     | 4.7 - 7.7   |
|                              | \$50,000 or More      | 3.1     | 2.2 - 3.9   |
| <b>MARITAL STATUS</b>        | Married/Couple        | 5.5     | 4.7 - 6.4   |
|                              | Not Married/Couple    | 9.7     | 8.2 - 11.1  |

**Percentage of adults who have any disability**

|                              |                       | Measure | 95% CI      |
|------------------------------|-----------------------|---------|-------------|
| <b>ALL</b>                   | Overall               | 30.3    | 28.9 - 31.8 |
| <b>SEX</b>                   | Men                   | 29.0    | 26.8 - 31.2 |
|                              | Women                 | 31.6    | 29.6 - 33.6 |
| <b>RACE/ETHNICITY</b>        | Non-Hisp. White       | 31.4    | 29.8 - 32.9 |
|                              | Non-Hisp. Black       | 30.5    | 25.9 - 35.0 |
|                              | Hispanic              | 29.6    | 25.6 - 33.7 |
| <b>SEX BY RACE/ETHNICITY</b> | Non-Hisp. White Men   | 29.7    | 27.4 - 32.0 |
|                              | Non-Hisp. White Women | 33.0    | 30.9 - 35.1 |
|                              | Non-Hisp. Black Men   | 30.6    | 23.5 - 37.6 |
|                              | Non-Hisp. Black Women | 30.4    | 24.4 - 36.4 |
|                              | Hispanic Men          | 28.2    | 22.2 - 34.2 |
|                              | Hispanic Women        | 31.1    | 25.6 - 36.6 |
| <b>AGE GROUP</b>             | 18-44                 | 20.0    | 17.7 - 22.2 |
|                              | 45-64                 | 33.6    | 30.8 - 36.3 |
|                              | 65 & Older            | 43.3    | 40.6 - 45.9 |
| <b>EDUCATION LEVEL</b>       | <High School          | 51.5    | 45.8 - 57.1 |
|                              | High School / GED     | 32.4    | 29.5 - 35.3 |
|                              | >High School          | 24.7    | 23.1 - 26.3 |
| <b>ANNUAL INCOME</b>         | <\$25,000             | 44.9    | 41.5 - 48.3 |
|                              | \$25,000-\$49,999     | 29.2    | 26.0 - 32.3 |
|                              | \$50,000 or More      | 19.3    | 17.3 - 21.2 |
| <b>MARITAL STATUS</b>        | Married/Couple        | 26.5    | 24.6 - 28.5 |
|                              | Not Married/Couple    | 34.6    | 32.4 - 36.9 |

CI=Confidence Interval  
 NA=Not available due to respondent counts of less than 30.

2018 Florida BRFSS Data

**Epilepsy**

**Percentage of adults who have ever been told that they have a seizure disorder or epilepsy**

|                              |                       | Measure | 95% CI    |
|------------------------------|-----------------------|---------|-----------|
| <b>ALL</b>                   | Overall               | 2.2     | 1.5 - 2.8 |
| <b>SEX</b>                   | Men                   | 1.9     | 1.1 - 2.7 |
|                              | Women                 | 2.4     | 1.3 - 3.4 |
| <b>RACE/ETHNICITY</b>        | Non-Hisp. White       | 1.8     | 1.3 - 2.3 |
|                              | Non-Hisp. Black       | 1.9     | 0.6 - 3.2 |
|                              | Hispanic              | 3.1     | 0.6 - 5.6 |
| <b>SEX BY RACE/ETHNICITY</b> | Non-Hisp. White Men   | 1.7     | 1.1 - 2.4 |
|                              | Non-Hisp. White Women | 1.9     | 1.2 - 2.6 |
|                              | Non-Hisp. Black Men   | 1.0     | 0.0 - 2.0 |
|                              | Non-Hisp. Black Women | 2.6     | 0.5 - 4.8 |
|                              | Hispanic Men          | 2.7     | 0.0 - 5.6 |
|                              | Hispanic Women        | 3.5     | 0.0 - 7.5 |
| <b>AGE GROUP</b>             | 18-44                 | 1.5     | 0.9 - 2.1 |
|                              | 45-64                 | 2.8     | 1.3 - 4.3 |
|                              | 65 & Older            | 2.0     | 0.6 - 3.4 |
| <b>EDUCATION LEVEL</b>       | <High School          | 4.4     | 1.1 - 7.8 |
|                              | High School / GED     | 2.2     | 0.8 - 3.6 |
|                              | >High School          | 1.6     | 1.1 - 2.1 |
| <b>ANNUAL INCOME</b>         | <\$25,000             | 3.3     | 1.5 - 5.1 |
|                              | \$25,000-\$49,999     | 1.5     | 0.7 - 2.2 |
|                              | \$50,000 or More      | 2.0     | 0.8 - 3.3 |
| <b>MARITAL STATUS</b>        | Married/Couple        | 2.5     | 1.3 - 3.6 |
|                              | Not Married/Couple    | 1.8     | 1.1 - 2.5 |

**Percentage of adults with seizure disorder or epilepsy who have had at least one seizure in the past year**

|                              |                       | Measure | 95% CI      |
|------------------------------|-----------------------|---------|-------------|
| <b>ALL</b>                   | Overall               | 43.7    | 26.0 - 61.4 |
| <b>SEX</b>                   | Men                   | 42.7    | 22.0 - 63.3 |
|                              | Women                 | 44.3    | 17.6 - 71.1 |
| <b>RACE/ETHNICITY</b>        | Non-Hisp. White       | 37.6    | 24.0 - 51.2 |
|                              | Non-Hisp. Black       | NA      |             |
|                              | Hispanic              | NA      |             |
| <b>SEX BY RACE/ETHNICITY</b> | Non-Hisp. White Men   | 34.1    | 14.1 - 54.1 |
|                              | Non-Hisp. White Women | 40.7    | 22.2 - 59.3 |
|                              | Non-Hisp. Black Men   | NA      |             |
|                              | Non-Hisp. Black Women | NA      |             |
|                              | Hispanic Men          | NA      |             |
|                              | Hispanic Women        | NA      |             |
| <b>AGE GROUP</b>             | 18-44                 | 42.1    | 24.1 - 60.1 |
|                              | 45-64                 | 34.0    | 12.6 - 55.4 |
|                              | 65 & Older            | 64.4    | 45.2 - 83.6 |
| <b>EDUCATION LEVEL</b>       | <High School          | 81.1    | 64.7 - 97.5 |
|                              | High School / GED     | 30.4    | 8.9 - 52.0  |
|                              | >High School          | 32.6    | 21.9 - 43.2 |
| <b>ANNUAL INCOME</b>         | <\$25,000             | 63.7    | 45.2 - 82.2 |
|                              | \$25,000-\$49,999     | 42.8    | 16.9 - 68.7 |
|                              | \$50,000 or More      | 23.1    | 4.0 - 42.3  |
| <b>MARITAL STATUS</b>        | Married/Couple        | 44.5    | 17.2 - 71.8 |
|                              | Not Married/Couple    | 42.9    | 28.4 - 57.4 |

CI=Confidence Interval  
 NA=Not available due to respondent counts of less than 30.

**Epilepsy**  
**Percentage of adults with seizure disorder or epilepsy who have seen a neurologist or epilepsy specialist in the past year**

|                              |                       | Measure | 95% CI      |
|------------------------------|-----------------------|---------|-------------|
| <b>ALL</b>                   | Overall               | 44.1    | 27.0 - 61.2 |
| <b>SEX</b>                   | Men                   | 41.8    | 23.1 - 60.5 |
|                              | Women                 | 45.5    | 20.2 - 70.8 |
| <b>RACE/ETHNICITY</b>        | Non-Hisp. White       | 37.4    | 28.2 - 46.6 |
|                              | Non-Hisp. Black       | NA      |             |
|                              | Hispanic              | NA      |             |
| <b>SEX BY RACE/ETHNICITY</b> | Non-Hisp. White Men   | 33.0    | 18.9 - 47.1 |
|                              | Non-Hisp. White Women | 41.0    | 28.0 - 54.0 |
|                              | Non-Hisp. Black Men   | NA      |             |
|                              | Non-Hisp. Black Women | NA      |             |
|                              | Hispanic Men          | NA      |             |
|                              | Hispanic Women        | NA      |             |
| <b>AGE GROUP</b>             | 18-44                 | 27.7    | 14.0 - 41.4 |
|                              | 45-64                 | 34.8    | 16.6 - 53.1 |
|                              | 65 & Older            | 72.1    | 55.6 - 88.6 |
| <b>EDUCATION LEVEL</b>       | <High School          | 70.3    | 48.3 - 92.2 |
|                              | High School / GED     | 20.7    | 7.1 - 34.2  |
|                              | >High School          | 47.4    | 32.9 - 61.8 |
| <b>ANNUAL INCOME</b>         | <\$25,000             | 64.6    | 47.7 - 81.5 |
|                              | \$25,000-\$49,999     | 36.9    | 14.3 - 59.5 |
|                              | \$50,000 or More      | 25.2    | 5.0 - 45.4  |
| <b>MARITAL STATUS</b>        | Married/Couple        | 49.7    | 22.6 - 76.7 |
|                              | Not Married/Couple    | 33.8    | 23.5 - 44.2 |

CI=Confidence Interval  
 NA=Not available due to respondent counts of less than 30.

2018 Florida BRFSS Data

**Fall-Related Injury**

**Percentage of adults 45 years of age and older who had a fall-related injury in the past 12 months**

|                              |                       | Measure | 95% CI      |
|------------------------------|-----------------------|---------|-------------|
| <b>ALL</b>                   | Overall               | 10.4    | 9.2 - 11.5  |
| <b>SEX</b>                   | Men                   | 7.5     | 6.1 - 9.0   |
|                              | Women                 | 12.9    | 11.1 - 14.6 |
| <b>RACE/ETHNICITY</b>        | Non-Hisp. White       | 11.1    | 9.9 - 12.4  |
|                              | Non-Hisp. Black       | 7.8     | 4.9 - 10.7  |
|                              | Hispanic              | 9.1     | 5.4 - 12.8  |
| <b>SEX BY RACE/ETHNICITY</b> | Non-Hisp. White Men   | 8.7     | 6.9 - 10.4  |
|                              | Non-Hisp. White Women | 13.2    | 11.4 - 15.0 |
|                              | Non-Hisp. Black Men   | 6.8     | 2.6 - 10.9  |
|                              | Non-Hisp. Black Women | 8.7     | 4.7 - 12.8  |
|                              | Hispanic Men          | 4.2     | 0.5 - 7.9   |
|                              | Hispanic Women        | 13.4    | 7.3 - 19.5  |
| <b>AGE GROUP</b>             | 45-64                 | 10.8    | 9.1 - 12.4  |
|                              | 65 & Older            | 9.9     | 8.3 - 11.5  |
| <b>EDUCATION LEVEL</b>       | <High School          | 14.5    | 9.5 - 19.5  |
|                              | High School / GED     | 10.7    | 8.6 - 12.8  |
|                              | >High School          | 9.4     | 8.1 - 10.7  |
| <b>ANNUAL INCOME</b>         | <\$25,000             | 15.2    | 12.7 - 17.8 |
|                              | \$25,000-\$49,999     | 10.8    | 8.2 - 13.4  |
|                              | \$50,000 or More      | 7.2     | 5.6 - 8.8   |
| <b>MARITAL STATUS</b>        | Married/Couple        | 8.2     | 6.9 - 9.5   |
|                              | Not Married/Couple    | 13.5    | 11.4 - 15.6 |

CI=Confidence Interval  
 NA=Not available due to respondent counts of less than 30.

**Hypertension Awareness & Control**

**Percentage of adults who have ever been told they had hypertension**

|                              |                       | Measure | 95% CI      |
|------------------------------|-----------------------|---------|-------------|
| <b>ALL</b>                   | Overall               | 37.8    | 36.0 - 39.6 |
| <b>SEX</b>                   | Men                   | 37.1    | 34.5 - 39.8 |
|                              | Women                 | 38.4    | 36.0 - 40.9 |
| <b>RACE/ETHNICITY</b>        | Non-Hisp. White       | 40.6    | 38.8 - 42.5 |
|                              | Non-Hisp. Black       | 41.3    | 35.9 - 46.6 |
|                              | Hispanic              | 31.2    | 26.2 - 36.2 |
| <b>SEX BY RACE/ETHNICITY</b> | Non-Hisp. White Men   | 41.2    | 38.3 - 44.0 |
|                              | Non-Hisp. White Women | 40.1    | 37.7 - 42.5 |
|                              | Non-Hisp. Black Men   | 40.1    | 32.0 - 48.3 |
|                              | Non-Hisp. Black Women | 42.2    | 35.1 - 49.3 |
|                              | Hispanic Men          | 28.4    | 21.6 - 35.2 |
|                              | Hispanic Women        | 33.9    | 26.7 - 41.2 |
| <b>AGE GROUP</b>             | 18-44                 | 15.5    | 13.1 - 18.0 |
|                              | 45-64                 | 44.1    | 40.9 - 47.4 |
|                              | 65 & Older            | 61.0    | 58.1 - 63.9 |
| <b>EDUCATION LEVEL</b>       | <High School          | 44.6    | 38.4 - 50.9 |
|                              | High School / GED     | 40.2    | 36.8 - 43.7 |
|                              | >High School          | 34.8    | 32.7 - 36.9 |
| <b>ANNUAL INCOME</b>         | <\$25,000             | 44.3    | 40.6 - 48.1 |
|                              | \$25,000-\$49,999     | 38.5    | 34.6 - 42.4 |
|                              | \$50,000 or More      | 33.8    | 31.0 - 36.7 |
| <b>MARITAL STATUS</b>        | Married/Couple        | 38.0    | 35.6 - 40.5 |
|                              | Not Married/Couple    | 37.5    | 34.9 - 40.1 |

**Percentage of adults with hypertension who currently take high blood pressure medicine**

|                              |                       | Measure | 95% CI      |
|------------------------------|-----------------------|---------|-------------|
| <b>ALL</b>                   | Overall               | 79.1    | 76.6 - 81.5 |
| <b>SEX</b>                   | Men                   | 74.9    | 70.9 - 78.8 |
|                              | Women                 | 82.7    | 79.8 - 85.6 |
| <b>RACE/ETHNICITY</b>        | Non-Hisp. White       | 80.0    | 77.5 - 82.6 |
|                              | Non-Hisp. Black       | 82.6    | 76.8 - 88.4 |
|                              | Hispanic              | 73.5    | 65.1 - 81.9 |
| <b>SEX BY RACE/ETHNICITY</b> | Non-Hisp. White Men   | 76.3    | 72.2 - 80.3 |
|                              | Non-Hisp. White Women | 83.4    | 80.3 - 86.6 |
|                              | Non-Hisp. Black Men   | 84.1    | 76.3 - 91.8 |
|                              | Non-Hisp. Black Women | 81.5    | 73.2 - 89.7 |
|                              | Hispanic Men          | 62.8    | 48.6 - 77.0 |
|                              | Hispanic Women        | 82.2    | 73.6 - 90.9 |
| <b>AGE GROUP</b>             | 18-44                 | 40.4    | 31.5 - 49.2 |
|                              | 45-64                 | 78.2    | 74.0 - 82.4 |
|                              | 65 & Older            | 93.4    | 91.9 - 95.0 |
| <b>EDUCATION LEVEL</b>       | <High School          | 80.2    | 73.5 - 86.9 |
|                              | High School / GED     | 78.7    | 73.9 - 83.5 |
|                              | >High School          | 78.7    | 75.7 - 81.8 |
| <b>ANNUAL INCOME</b>         | <\$25,000             | 79.7    | 75.6 - 83.8 |
|                              | \$25,000-\$49,999     | 82.8    | 78.2 - 87.4 |
|                              | \$50,000 or More      | 74.6    | 69.5 - 79.6 |
| <b>MARITAL STATUS</b>        | Married/Couple        | 80.6    | 77.0 - 84.1 |
|                              | Not Married/Couple    | 77.3    | 73.9 - 80.7 |

CI=Confidence Interval  
 NA=Not available due to respondent counts of less than 30.



2018 Florida BRFSS Data

**Kidney Disease**

**Percentage of adults who have ever been told they had kidney disease**

|                              |                       | Measure | 95% CI     |
|------------------------------|-----------------------|---------|------------|
| <b>ALL</b>                   | Overall               | 3.5     | 2.9 - 4.0  |
| <b>SEX</b>                   | Men                   | 3.3     | 2.5 - 4.1  |
|                              | Women                 | 3.6     | 2.9 - 4.3  |
| <b>RACE/ETHNICITY</b>        | Non-Hisp. White       | 3.7     | 3.1 - 4.2  |
|                              | Non-Hisp. Black       | 3.1     | 1.6 - 4.6  |
|                              | Hispanic              | 3.0     | 1.6 - 4.4  |
| <b>SEX BY RACE/ETHNICITY</b> | Non-Hisp. White Men   | 3.4     | 2.5 - 4.2  |
|                              | Non-Hisp. White Women | 3.9     | 3.2 - 4.7  |
|                              | Non-Hisp. Black Men   | 3.8     | 1.0 - 6.5  |
|                              | Non-Hisp. Black Women | 2.4     | 1.0 - 3.9  |
|                              | Hispanic Men          | 2.6     | 0.6 - 4.7  |
|                              | Hispanic Women        | 3.4     | 1.5 - 5.3  |
| <b>AGE GROUP</b>             | 18-44                 | 1.4     | 0.8 - 2.1  |
|                              | 45-64                 | 3.4     | 2.4 - 4.4  |
|                              | 65 & Older            | 6.7     | 5.5 - 8.0  |
| <b>EDUCATION LEVEL</b>       | <High School          | 7.6     | 4.7 - 10.5 |
|                              | High School / GED     | 3.3     | 2.4 - 4.2  |
|                              | >High School          | 2.6     | 2.1 - 3.0  |
| <b>ANNUAL INCOME</b>         | <\$25,000             | 5.7     | 4.2 - 7.1  |
|                              | \$25,000-\$49,999     | 3.3     | 2.3 - 4.4  |
|                              | \$50,000 or More      | 2.2     | 1.6 - 2.9  |
| <b>MARITAL STATUS</b>        | Married/Couple        | 2.8     | 2.2 - 3.3  |
|                              | Not Married/Couple    | 4.3     | 3.3 - 5.2  |

CI=Confidence Interval

NA=Not available due to respondent counts of less than 30.

2018 Florida BRFSS Data

**Oral Health**

**Percentage of adults who have seen a dentist in the past year**

|                              |                       | Measure | 95% CI      |
|------------------------------|-----------------------|---------|-------------|
| <b>ALL</b>                   | Overall               | 65.7    | 64.1 - 67.2 |
| <b>SEX</b>                   | Men                   | 63.0    | 60.7 - 65.3 |
|                              | Women                 | 68.1    | 66.1 - 70.1 |
| <b>RACE/ETHNICITY</b>        | Non-Hisp. White       | 67.9    | 66.3 - 69.5 |
|                              | Non-Hisp. Black       | 61.4    | 56.7 - 66.0 |
|                              | Hispanic              | 63.1    | 59.0 - 67.2 |
| <b>SEX BY RACE/ETHNICITY</b> | Non-Hisp. White Men   | 66.0    | 63.6 - 68.5 |
|                              | Non-Hisp. White Women | 69.7    | 67.7 - 71.8 |
|                              | Non-Hisp. Black Men   | 56.0    | 48.7 - 63.4 |
|                              | Non-Hisp. Black Women | 66.1    | 60.2 - 72.0 |
|                              | Hispanic Men          | 61.8    | 55.8 - 67.7 |
|                              | Hispanic Women        | 64.3    | 58.6 - 70.0 |
| <b>AGE GROUP</b>             | 18-44                 | 62.3    | 59.6 - 64.9 |
|                              | 45-64                 | 64.6    | 61.8 - 67.3 |
|                              | 65 & Older            | 71.6    | 69.2 - 73.9 |
| <b>EDUCATION LEVEL</b>       | <High School          | 50.1    | 44.6 - 55.6 |
|                              | High School / GED     | 59.2    | 56.2 - 62.3 |
|                              | >High School          | 72.3    | 70.7 - 74.0 |
| <b>ANNUAL INCOME</b>         | <\$25,000             | 50.5    | 47.0 - 53.9 |
|                              | \$25,000-\$49,999     | 60.5    | 57.0 - 64.0 |
|                              | \$50,000 or More      | 78.1    | 76.0 - 80.1 |
| <b>MARITAL STATUS</b>        | Married/Couple        | 69.6    | 67.6 - 71.6 |
|                              | Not Married/Couple    | 60.9    | 58.6 - 63.2 |

**Percentage of adults who had a permanent tooth removed because of tooth decay or gum disease**

|                              |                       | Measure | 95% CI      |
|------------------------------|-----------------------|---------|-------------|
| <b>ALL</b>                   | Overall               | 45.8    | 44.2 - 47.4 |
| <b>SEX</b>                   | Men                   | 44.7    | 42.3 - 47.1 |
|                              | Women                 | 46.9    | 44.7 - 49.1 |
| <b>RACE/ETHNICITY</b>        | Non-Hisp. White       | 45.6    | 44.0 - 47.3 |
|                              | Non-Hisp. Black       | 49.3    | 44.4 - 54.1 |
|                              | Hispanic              | 45.1    | 40.7 - 49.5 |
| <b>SEX BY RACE/ETHNICITY</b> | Non-Hisp. White Men   | 44.7    | 42.2 - 47.2 |
|                              | Non-Hisp. White Women | 46.5    | 44.3 - 48.8 |
|                              | Non-Hisp. Black Men   | 49.9    | 42.5 - 57.3 |
|                              | Non-Hisp. Black Women | 48.7    | 42.3 - 55.1 |
|                              | Hispanic Men          | 43.2    | 36.9 - 49.5 |
|                              | Hispanic Women        | 47.0    | 40.9 - 53.1 |
| <b>AGE GROUP</b>             | 18-44                 | 27.8    | 25.3 - 30.3 |
|                              | 45-64                 | 51.6    | 48.8 - 54.5 |
|                              | 65 & Older            | 67.7    | 65.3 - 70.2 |
| <b>EDUCATION LEVEL</b>       | <High School          | 64.4    | 59.0 - 69.8 |
|                              | High School / GED     | 49.8    | 46.6 - 53.0 |
|                              | >High School          | 39.8    | 38.0 - 41.7 |
| <b>ANNUAL INCOME</b>         | <\$25,000             | 57.3    | 53.8 - 60.7 |
|                              | \$25,000-\$49,999     | 49.3    | 45.7 - 52.9 |
|                              | \$50,000 or More      | 36.3    | 33.9 - 38.6 |
| <b>MARITAL STATUS</b>        | Married/Couple        | 45.6    | 43.4 - 47.8 |
|                              | Not Married/Couple    | 46.2    | 43.8 - 48.6 |

CI=Confidence Interval  
 NA=Not available due to respondent counts of less than 30.

2018 Florida BRFSS Data

**Overweight & Obesity**

**Percentage of adults who are overweight**

|                              |                       | Measure | 95% CI      |
|------------------------------|-----------------------|---------|-------------|
| <b>ALL</b>                   | Overall               | 35.3    | 33.7 - 36.9 |
| <b>SEX</b>                   | Men                   | 39.7    | 37.3 - 42.1 |
|                              | Women                 | 30.8    | 28.7 - 32.9 |
| <b>RACE/ETHNICITY</b>        | Non-Hisp. White       | 36.0    | 34.3 - 37.7 |
|                              | Non-Hisp. Black       | 36.1    | 31.2 - 41.1 |
|                              | Hispanic              | 34.1    | 29.6 - 38.6 |
| <b>SEX BY RACE/ETHNICITY</b> | Non-Hisp. White Men   | 39.3    | 36.8 - 41.8 |
|                              | Non-Hisp. White Women | 32.7    | 30.5 - 34.9 |
|                              | Non-Hisp. Black Men   | 40.3    | 32.7 - 47.9 |
|                              | Non-Hisp. Black Women | 32.3    | 25.9 - 38.7 |
|                              | Hispanic Men          | 40.6    | 33.8 - 47.3 |
|                              | Hispanic Women        | 27.6    | 21.9 - 33.3 |
| <b>AGE GROUP</b>             | 18-44                 | 33.4    | 30.6 - 36.2 |
|                              | 45-64                 | 34.1    | 31.3 - 36.8 |
|                              | 65 & Older            | 39.0    | 36.4 - 41.6 |
| <b>EDUCATION LEVEL</b>       | <High School          | 30.0    | 24.5 - 35.4 |
|                              | High School / GED     | 34.7    | 31.6 - 37.8 |
|                              | >High School          | 36.6    | 34.7 - 38.6 |
| <b>ANNUAL INCOME</b>         | <\$25,000             | 32.3    | 29.0 - 35.6 |
|                              | \$25,000-\$49,999     | 36.0    | 32.4 - 39.6 |
|                              | \$50,000 or More      | 37.4    | 35.0 - 39.8 |
| <b>MARITAL STATUS</b>        | Married/Couple        | 37.5    | 35.3 - 39.7 |
|                              | Not Married/Couple    | 32.7    | 30.4 - 35.1 |

**Percentage of adults who are obese**

|                              |                       | Measure | 95% CI      |
|------------------------------|-----------------------|---------|-------------|
| <b>ALL</b>                   | Overall               | 30.7    | 29.1 - 32.2 |
| <b>SEX</b>                   | Men                   | 31.1    | 28.8 - 33.3 |
|                              | Women                 | 30.2    | 28.0 - 32.4 |
| <b>RACE/ETHNICITY</b>        | Non-Hisp. White       | 28.0    | 26.5 - 29.6 |
|                              | Non-Hisp. Black       | 37.9    | 33.1 - 42.8 |
|                              | Hispanic              | 33.7    | 29.0 - 38.4 |
| <b>SEX BY RACE/ETHNICITY</b> | Non-Hisp. White Men   | 30.4    | 28.1 - 32.7 |
|                              | Non-Hisp. White Women | 25.7    | 23.6 - 27.7 |
|                              | Non-Hisp. Black Men   | 31.0    | 24.3 - 37.7 |
|                              | Non-Hisp. Black Women | 44.2    | 37.5 - 50.8 |
|                              | Hispanic Men          | 34.1    | 27.5 - 40.8 |
|                              | Hispanic Women        | 33.1    | 26.4 - 39.8 |
| <b>AGE GROUP</b>             | 18-44                 | 28.2    | 25.5 - 30.8 |
|                              | 45-64                 | 36.4    | 33.5 - 39.4 |
|                              | 65 & Older            | 27.8    | 25.4 - 30.3 |
| <b>EDUCATION LEVEL</b>       | <High School          | 37.1    | 31.3 - 43.0 |
|                              | High School / GED     | 31.9    | 28.7 - 35.0 |
|                              | >High School          | 28.7    | 26.9 - 30.6 |
| <b>ANNUAL INCOME</b>         | <\$25,000             | 34.3    | 31.0 - 37.6 |
|                              | \$25,000-\$49,999     | 32.0    | 28.4 - 35.5 |
|                              | \$50,000 or More      | 29.7    | 27.3 - 32.1 |
| <b>MARITAL STATUS</b>        | Married/Couple        | 30.9    | 28.8 - 33.1 |
|                              | Not Married/Couple    | 30.4    | 28.1 - 32.7 |

CI=Confidence Interval  
 NA=Not available due to respondent counts of less than 30.

2018 Florida BRFSS Data

**Overweight & Obesity**

**Percentage of adults who are overweight or obese**

|                              |                       | Measure | 95% CI      |
|------------------------------|-----------------------|---------|-------------|
| <b>ALL</b>                   | Overall               | 65.9    | 64.3 - 67.5 |
| <b>SEX</b>                   | Men                   | 70.8    | 68.5 - 73.1 |
|                              | Women                 | 61.0    | 58.8 - 63.3 |
| <b>RACE/ETHNICITY</b>        | Non-Hisp. White       | 64.0    | 62.3 - 65.7 |
|                              | Non-Hisp. Black       | 74.0    | 69.5 - 78.6 |
|                              | Hispanic              | 67.8    | 63.1 - 72.4 |
| <b>SEX BY RACE/ETHNICITY</b> | Non-Hisp. White Men   | 69.7    | 67.2 - 72.2 |
|                              | Non-Hisp. White Women | 58.3    | 56.0 - 60.7 |
|                              | Non-Hisp. Black Men   | 71.3    | 64.0 - 78.7 |
|                              | Non-Hisp. Black Women | 76.5    | 71.0 - 82.0 |
|                              | Hispanic Men          | 74.7    | 68.8 - 80.6 |
|                              | Hispanic Women        | 60.7    | 53.8 - 67.6 |
| <b>AGE GROUP</b>             | 18-44                 | 61.5    | 58.6 - 64.5 |
|                              | 45-64                 | 70.5    | 67.8 - 73.2 |
|                              | 65 & Older            | 66.9    | 64.3 - 69.4 |
| <b>EDUCATION LEVEL</b>       | <High School          | 67.1    | 61.1 - 73.2 |
|                              | High School / GED     | 66.6    | 63.4 - 69.7 |
|                              | >High School          | 65.3    | 63.4 - 67.3 |
| <b>ANNUAL INCOME</b>         | <\$25,000             | 66.6    | 63.1 - 70.0 |
|                              | \$25,000-\$49,999     | 67.9    | 64.5 - 71.3 |
|                              | \$50,000 or More      | 67.1    | 64.7 - 69.5 |
| <b>MARITAL STATUS</b>        | Married/Couple        | 68.4    | 66.2 - 70.6 |
|                              | Not Married/Couple    | 63.1    | 60.7 - 65.6 |

**Percentage of adults who have a healthy weight (BMI from 18.5 to 24.9)**

|                              |                       | Measure | 95% CI      |
|------------------------------|-----------------------|---------|-------------|
| <b>ALL</b>                   | Overall               | 32.2    | 30.6 - 33.8 |
| <b>SEX</b>                   | Men                   | 28.2    | 25.9 - 30.5 |
|                              | Women                 | 36.2    | 34.0 - 38.5 |
| <b>RACE/ETHNICITY</b>        | Non-Hisp. White       | 33.7    | 32.0 - 35.4 |
|                              | Non-Hisp. Black       | 24.5    | 20.0 - 29.0 |
|                              | Hispanic              | 31.3    | 26.7 - 35.9 |
| <b>SEX BY RACE/ETHNICITY</b> | Non-Hisp. White Men   | 29.1    | 26.6 - 31.6 |
|                              | Non-Hisp. White Women | 38.4    | 36.0 - 40.7 |
|                              | Non-Hisp. Black Men   | 27.7    | 20.3 - 35.0 |
|                              | Non-Hisp. Black Women | 21.7    | 16.4 - 26.9 |
|                              | Hispanic Men          | 24.7    | 18.8 - 30.6 |
|                              | Hispanic Women        | 38.1    | 31.2 - 45.0 |
| <b>AGE GROUP</b>             | 18-44                 | 36.2    | 33.2 - 39.1 |
|                              | 45-64                 | 28.1    | 25.5 - 30.8 |
|                              | 65 & Older            | 31.3    | 28.8 - 33.9 |
| <b>EDUCATION LEVEL</b>       | <High School          | 31.5    | 25.5 - 37.6 |
|                              | High School / GED     | 31.0    | 28.0 - 34.1 |
|                              | >High School          | 33.0    | 31.0 - 34.9 |
| <b>ANNUAL INCOME</b>         | <\$25,000             | 30.5    | 27.0 - 33.9 |
|                              | \$25,000-\$49,999     | 30.2    | 26.9 - 33.6 |
|                              | \$50,000 or More      | 31.9    | 29.5 - 34.3 |
| <b>MARITAL STATUS</b>        | Married/Couple        | 30.5    | 28.4 - 32.7 |
|                              | Not Married/Couple    | 34.3    | 31.8 - 36.7 |

CI=Confidence Interval  
 NA=Not available due to respondent counts of less than 30.

2018 Florida BRFSS Data

**Cancer Screening/Breast**

**Percentage of women 40 years of age and older who received a mammogram in the past year**

|                              |                       | Measure | 95% CI      |
|------------------------------|-----------------------|---------|-------------|
| <b>ALL</b>                   | Overall               | 59.5    | 57.0 - 62.1 |
| <b>SEX</b>                   | Women                 | 59.5    | 57.0 - 62.1 |
| <b>RACE/ETHNICITY</b>        | Non-Hisp. White       | 57.9    | 55.4 - 60.4 |
|                              | Non-Hisp. Black       | 62.7    | 54.0 - 71.4 |
|                              | Hispanic              | 64.7    | 56.8 - 72.6 |
| <b>SEX BY RACE/ETHNICITY</b> | Non-Hisp. White Women | 57.9    | 55.4 - 60.4 |
|                              | Non-Hisp. Black Women | 62.7    | 54.0 - 71.4 |
|                              | Hispanic Women        | 64.7    | 56.8 - 72.6 |
| <b>AGE GROUP</b>             | 18-44                 | 47.1    | 36.6 - 57.5 |
|                              | 45-64                 | 60.8    | 57.0 - 64.6 |
|                              | 65 & Older            | 61.4    | 58.0 - 64.9 |
| <b>EDUCATION LEVEL</b>       | <High School          | 57.5    | 48.0 - 67.0 |
|                              | High School / GED     | 60.5    | 55.5 - 65.5 |
|                              | >High School          | 59.5    | 56.5 - 62.5 |
| <b>ANNUAL INCOME</b>         | <\$25,000             | 48.1    | 42.8 - 53.4 |
|                              | \$25,000-\$49,999     | 60.6    | 55.1 - 66.0 |
|                              | \$50,000 or More      | 65.0    | 60.9 - 69.0 |
| <b>MARITAL STATUS</b>        | Married/Couple        | 63.8    | 60.3 - 67.2 |
|                              | Not Married/Couple    | 54.4    | 50.7 - 58.1 |

**Percentage of women aged 50 to 74 who had a mammogram in the past 2 years**

|                              |                       | Measure | 95% CI      |
|------------------------------|-----------------------|---------|-------------|
| <b>SEX</b>                   | Women                 | 81.4    | 79.2 - 83.6 |
| <b>RACE/ETHNICITY</b>        | Non-Hisp. White       | 79.7    | 77.3 - 82.1 |
|                              | Non-Hisp. Black       | 83.1    | 74.5 - 91.6 |
|                              | Hispanic              | 88.5    | 82.2 - 94.8 |
| <b>SEX BY RACE/ETHNICITY</b> | Non-Hisp. White Women | 79.7    | 77.3 - 82.1 |
|                              | Non-Hisp. Black Women | 83.1    | 74.5 - 91.6 |
|                              | Hispanic Women        | 88.5    | 82.2 - 94.8 |
| <b>AGE GROUP</b>             | 45-64                 | 79.2    | 76.1 - 82.3 |
|                              | 65 & Older            | 84.9    | 82.0 - 87.9 |
| <b>EDUCATION LEVEL</b>       | <High School          | 79.7    | 70.9 - 88.5 |
|                              | High School / GED     | 80.6    | 75.9 - 85.3 |
|                              | >High School          | 82.1    | 79.5 - 84.6 |
| <b>ANNUAL INCOME</b>         | <\$25,000             | 74.4    | 69.0 - 79.8 |
|                              | \$25,000-\$49,999     | 79.4    | 74.4 - 84.4 |
|                              | \$50,000 or More      | 85.4    | 82.4 - 88.5 |
| <b>MARITAL STATUS</b>        | Married/Couple        | 82.6    | 79.7 - 85.5 |
|                              | Not Married/Couple    | 79.8    | 76.3 - 83.3 |

CI=Confidence Interval  
 NA=Not available due to respondent counts of less than 30.

2018 Florida BRFSS Data

**Cancer Screening/Cervical**

**Percentage of women 18 years of age and older who received a Pap test in the past year**

|                              |                       | Measure | 95% CI      |
|------------------------------|-----------------------|---------|-------------|
| <b>ALL</b>                   | Overall               | 50.4    | 47.7 - 53.1 |
| <b>SEX</b>                   | Women                 | 50.4    | 47.7 - 53.1 |
| <b>RACE/ETHNICITY</b>        | Non-Hisp. White       | 45.6    | 42.8 - 48.4 |
|                              | Non-Hisp. Black       | 56.3    | 48.6 - 63.9 |
|                              | Hispanic              | 58.2    | 51.5 - 64.8 |
| <b>SEX BY RACE/ETHNICITY</b> | Non-Hisp. White Women | 45.6    | 42.8 - 48.4 |
|                              | Non-Hisp. Black Women | 56.3    | 48.6 - 63.9 |
|                              | Hispanic Women        | 58.2    | 51.5 - 64.8 |
| <b>AGE GROUP</b>             | 18-44                 | 54.4    | 50.2 - 58.5 |
|                              | 45-64                 | 54.7    | 50.1 - 59.3 |
|                              | 65 & Older            | 33.4    | 28.3 - 38.5 |
| <b>EDUCATION LEVEL</b>       | <High School          | 53.9    | 44.8 - 63.0 |
|                              | High School / GED     | 46.8    | 41.1 - 52.6 |
|                              | >High School          | 51.4    | 48.2 - 54.6 |
| <b>ANNUAL INCOME</b>         | <\$25,000             | 48.2    | 42.6 - 53.7 |
|                              | \$25,000-\$49,999     | 45.8    | 40.1 - 51.5 |
|                              | \$50,000 or More      | 56.8    | 52.5 - 61.0 |
| <b>MARITAL STATUS</b>        | Married/Couple        | 55.6    | 52.0 - 59.3 |
|                              | Not Married/Couple    | 45.0    | 41.1 - 48.9 |

**Percentage of women aged 21 to 65 who received a Pap test in the past 3 years**

|                              |                       | Measure | 95% CI      |
|------------------------------|-----------------------|---------|-------------|
| <b>ALL</b>                   | Overall               | 79.6    | 77.2 - 82.1 |
| <b>SEX</b>                   | Women                 | 79.6    | 77.2 - 82.1 |
| <b>RACE/ETHNICITY</b>        | Non-Hisp. White       | 79.2    | 76.3 - 82.1 |
|                              | Non-Hisp. Black       | 79.1    | 72.1 - 86.1 |
|                              | Hispanic              | 84.3    | 79.3 - 89.2 |
| <b>SEX BY RACE/ETHNICITY</b> | Non-Hisp. White Women | 79.2    | 76.3 - 82.1 |
|                              | Non-Hisp. Black Women | 79.1    | 72.1 - 86.1 |
|                              | Hispanic Women        | 84.3    | 79.3 - 89.2 |
| <b>AGE GROUP</b>             | 18-44                 | 79.6    | 76.2 - 82.9 |
|                              | 45-64                 | 80.0    | 76.4 - 83.7 |
|                              | 65 & Older            | 74.2    | 56.4 - 92.0 |
| <b>EDUCATION LEVEL</b>       | <High School          | 71.6    | 62.3 - 80.9 |
|                              | High School / GED     | 75.8    | 70.1 - 81.4 |
|                              | >High School          | 82.4    | 79.7 - 85.2 |
| <b>ANNUAL INCOME</b>         | <\$25,000             | 71.0    | 65.4 - 76.6 |
|                              | \$25,000-\$49,999     | 77.3    | 71.9 - 82.6 |
|                              | \$50,000 or More      | 86.9    | 83.6 - 90.2 |
| <b>MARITAL STATUS</b>        | Married/Couple        | 84.4    | 81.6 - 87.2 |
|                              | Not Married/Couple    | 74.3    | 70.3 - 78.4 |

CI=Confidence Interval

NA=Not available due to respondent counts of less than 30.

2018 Florida BRFSS Data

**Cancer Screening/Cervical**

**Percentage of women who have had a hysterectomy**

|                              |                       | Measure | 95% CI      |
|------------------------------|-----------------------|---------|-------------|
| <b>ALL</b>                   | Overall               | 21.3    | 19.7 - 22.8 |
| <b>SEX</b>                   | Women                 | 21.3    | 19.7 - 22.8 |
| <b>RACE/ETHNICITY</b>        | Non-Hisp. White       | 26.6    | 24.7 - 28.5 |
|                              | Non-Hisp. Black       | 19.7    | 14.9 - 24.5 |
|                              | Hispanic              | 10.7    | 7.6 - 13.8  |
| <b>SEX BY RACE/ETHNICITY</b> | Non-Hisp. White Women | 26.6    | 24.7 - 28.5 |
|                              | Non-Hisp. Black Women | 19.7    | 14.9 - 24.5 |
|                              | Hispanic Women        | 10.7    | 7.6 - 13.8  |
| <b>AGE GROUP</b>             | 18-44                 | 3.9     | 2.7 - 5.2   |
|                              | 45-64                 | 22.4    | 19.6 - 25.3 |
|                              | 65 & Older            | 43.4    | 40.0 - 46.8 |
| <b>EDUCATION LEVEL</b>       | <High School          | 19.8    | 14.2 - 25.5 |
|                              | High School / GED     | 24.2    | 21.0 - 27.3 |
|                              | >High School          | 20.1    | 18.3 - 22.0 |
| <b>ANNUAL INCOME</b>         | <\$25,000             | 21.9    | 18.7 - 25.1 |
|                              | \$25,000-\$49,999     | 21.2    | 18.0 - 24.5 |
|                              | \$50,000 or More      | 19.4    | 16.9 - 21.9 |
| <b>MARITAL STATUS</b>        | Married/Couple        | 21.2    | 19.0 - 23.3 |
|                              | Not Married/Couple    | 21.2    | 19.0 - 23.5 |

**Percentage of women 18 years of age and older who received a HPV test in the past 5 years**

|                              |                       | Measure | 95% CI      |
|------------------------------|-----------------------|---------|-------------|
| <b>ALL</b>                   | Overall               | 41.3    | 38.7 - 43.9 |
| <b>SEX</b>                   | Women                 | 41.3    | 38.7 - 43.9 |
| <b>RACE/ETHNICITY</b>        | Non-Hisp. White       | 36.0    | 33.3 - 38.7 |
|                              | Non-Hisp. Black       | 46.1    | 38.6 - 53.5 |
|                              | Hispanic              | 48.7    | 41.7 - 55.7 |
| <b>SEX BY RACE/ETHNICITY</b> | Non-Hisp. White Women | 36.0    | 33.3 - 38.7 |
|                              | Non-Hisp. Black Women | 46.1    | 38.6 - 53.5 |
|                              | Hispanic Women        | 48.7    | 41.7 - 55.7 |
| <b>AGE GROUP</b>             | 18-44                 | 56.9    | 52.4 - 61.3 |
|                              | 45-64                 | 43.4    | 38.7 - 48.1 |
|                              | 65 & Older            | 14.0    | 11.2 - 16.9 |
| <b>EDUCATION LEVEL</b>       | <High School          | 32.4    | 23.6 - 41.1 |
|                              | High School / GED     | 35.2    | 30.0 - 40.5 |
|                              | >High School          | 45.8    | 42.7 - 49.0 |
| <b>ANNUAL INCOME</b>         | <\$25,000             | 37.3    | 32.2 - 42.5 |
|                              | \$25,000-\$49,999     | 41.0    | 35.4 - 46.6 |
|                              | \$50,000 or More      | 53.1    | 48.8 - 57.4 |
| <b>MARITAL STATUS</b>        | Married/Couple        | 46.1    | 42.4 - 49.8 |
|                              | Not Married/Couple    | 36.7    | 33.1 - 40.3 |

CI=Confidence Interval  
 NA=Not available due to respondent counts of less than 30.

2018 Florida BRFSS Data

**Cancer Screening/Colorectal**

**Percentage of adults 50 years of age and older who received a blood stool test in the past year**

|                              |                       | Measure | 95% CI      |
|------------------------------|-----------------------|---------|-------------|
| <b>ALL</b>                   | Overall               | 17.9    | 16.2 - 19.6 |
| <b>SEX</b>                   | Men                   | 17.8    | 15.2 - 20.4 |
|                              | Women                 | 18.0    | 15.8 - 20.2 |
| <b>RACE/ETHNICITY</b>        | Non-Hisp. White       | 17.1    | 15.5 - 18.7 |
|                              | Non-Hisp. Black       | 21.4    | 15.6 - 27.2 |
|                              | Hispanic              | 19.9    | 13.6 - 26.2 |
| <b>SEX BY RACE/ETHNICITY</b> | Non-Hisp. White Men   | 16.2    | 14.0 - 18.4 |
|                              | Non-Hisp. White Women | 17.8    | 15.6 - 20.1 |
|                              | Non-Hisp. Black Men   | 25.6    | 15.9 - 35.4 |
|                              | Non-Hisp. Black Women | 17.8    | 11.0 - 24.5 |
|                              | Hispanic Men          | 20.5    | 10.2 - 30.8 |
|                              | Hispanic Women        | 19.4    | 11.6 - 27.1 |
| <b>AGE GROUP</b>             | 45-64                 | 13.5    | 11.1 - 15.9 |
|                              | 65 & Older            | 22.1    | 19.8 - 24.4 |
| <b>EDUCATION LEVEL</b>       | <High School          | 18.6    | 12.6 - 24.6 |
|                              | High School / GED     | 17.0    | 14.2 - 19.7 |
|                              | >High School          | 17.9    | 15.8 - 19.9 |
| <b>ANNUAL INCOME</b>         | <\$25,000             | 22.1    | 18.4 - 25.8 |
|                              | \$25,000-\$49,999     | 19.1    | 15.0 - 23.3 |
|                              | \$50,000 or More      | 13.1    | 11.1 - 15.1 |
| <b>MARITAL STATUS</b>        | Married/Couple        | 16.6    | 14.6 - 18.6 |
|                              | Not Married/Couple    | 19.7    | 16.9 - 22.5 |

**Percentage of adults 50 years of age and older who have ever had a sigmoidoscopy or colonoscopy in the past 5 years**

|                              |                       | Measure | 95% CI      |
|------------------------------|-----------------------|---------|-------------|
| <b>ALL</b>                   | Overall               | 54.7    | 52.6 - 56.7 |
| <b>SEX</b>                   | Men                   | 54.4    | 51.2 - 57.6 |
|                              | Women                 | 54.9    | 52.2 - 57.6 |
| <b>RACE/ETHNICITY</b>        | Non-Hisp. White       | 57.2    | 55.2 - 59.2 |
|                              | Non-Hisp. Black       | 52.6    | 45.2 - 60.0 |
|                              | Hispanic              | 46.7    | 39.1 - 54.2 |
| <b>SEX BY RACE/ETHNICITY</b> | Non-Hisp. White Men   | 57.8    | 54.8 - 60.9 |
|                              | Non-Hisp. White Women | 56.6    | 53.9 - 59.2 |
|                              | Non-Hisp. Black Men   | 46.6    | 35.5 - 57.8 |
|                              | Non-Hisp. Black Women | 57.8    | 48.1 - 67.5 |
|                              | Hispanic Men          | 46.7    | 35.0 - 58.4 |
|                              | Hispanic Women        | 46.6    | 36.9 - 56.4 |
| <b>AGE GROUP</b>             | 45-64                 | 47.2    | 44.0 - 50.3 |
|                              | 65 & Older            | 62.0    | 59.4 - 64.6 |
| <b>EDUCATION LEVEL</b>       | <High School          | 39.9    | 32.5 - 47.3 |
|                              | High School / GED     | 54.3    | 50.4 - 58.2 |
|                              | >High School          | 58.1    | 55.6 - 60.6 |
| <b>ANNUAL INCOME</b>         | <\$25,000             | 48.6    | 44.3 - 53.0 |
|                              | \$25,000-\$49,999     | 52.9    | 48.1 - 57.6 |
|                              | \$50,000 or More      | 60.9    | 57.7 - 64.1 |
| <b>MARITAL STATUS</b>        | Married/Couple        | 59.0    | 56.2 - 61.7 |
|                              | Not Married/Couple    | 48.9    | 45.8 - 52.1 |

CI=Confidence Interval

NA=Not available due to respondent counts of less than 30.



2018 Florida BRFSS Data

**Cancer Screening/Colorectal**

**Percentage of adults 50 years of age and older who have ever had a blood stool test**

|                              |                       | Measure | 95% CI      |
|------------------------------|-----------------------|---------|-------------|
| <b>ALL</b>                   | Overall               | 36.6    | 34.6 - 38.6 |
| <b>SEX</b>                   | Men                   | 35.9    | 32.9 - 38.9 |
|                              | Women                 | 37.2    | 34.6 - 39.8 |
| <b>RACE/ETHNICITY</b>        | Non-Hisp. White       | 38.3    | 36.4 - 40.3 |
|                              | Non-Hisp. Black       | 37.0    | 30.1 - 44.0 |
|                              | Hispanic              | 29.4    | 22.5 - 36.4 |
| <b>SEX BY RACE/ETHNICITY</b> | Non-Hisp. White Men   | 37.5    | 34.6 - 40.4 |
|                              | Non-Hisp. White Women | 39.0    | 36.4 - 41.7 |
|                              | Non-Hisp. Black Men   | 37.8    | 27.0 - 48.6 |
|                              | Non-Hisp. Black Women | 36.3    | 27.4 - 45.3 |
|                              | Hispanic Men          | 29.5    | 18.4 - 40.6 |
|                              | Hispanic Women        | 29.4    | 20.6 - 38.2 |
| <b>AGE GROUP</b>             | 45-64                 | 27.9    | 25.1 - 30.8 |
|                              | 65 & Older            | 44.9    | 42.2 - 47.5 |
| <b>EDUCATION LEVEL</b>       | <High School          | 27.7    | 21.2 - 34.2 |
|                              | High School / GED     | 34.3    | 30.7 - 37.9 |
|                              | >High School          | 39.6    | 37.1 - 42.0 |
| <b>ANNUAL INCOME</b>         | <\$25,000             | 36.9    | 32.7 - 41.0 |
|                              | \$25,000-\$49,999     | 38.7    | 34.1 - 43.3 |
|                              | \$50,000 or More      | 33.8    | 30.9 - 36.6 |
| <b>MARITAL STATUS</b>        | Married/Couple        | 36.2    | 33.6 - 38.7 |
|                              | Not Married/Couple    | 37.3    | 34.2 - 40.4 |

**Percentage of adults 50 years of age and older who have ever had a sigmoidoscopy or colonoscopy**

|                              |                       | Measure | 95% CI      |
|------------------------------|-----------------------|---------|-------------|
| <b>ALL</b>                   | Overall               | 71.5    | 69.5 - 73.5 |
| <b>SEX</b>                   | Men                   | 71.5    | 68.4 - 74.7 |
|                              | Women                 | 71.4    | 68.8 - 74.0 |
| <b>RACE/ETHNICITY</b>        | Non-Hisp. White       | 76.7    | 75.0 - 78.4 |
|                              | Non-Hisp. Black       | 63.4    | 56.1 - 70.8 |
|                              | Hispanic              | 57.2    | 49.6 - 64.8 |
| <b>SEX BY RACE/ETHNICITY</b> | Non-Hisp. White Men   | 77.9    | 75.4 - 80.5 |
|                              | Non-Hisp. White Women | 75.7    | 73.3 - 78.0 |
|                              | Non-Hisp. Black Men   | 58.8    | 47.6 - 70.0 |
|                              | Non-Hisp. Black Women | 67.6    | 57.9 - 77.3 |
|                              | Hispanic Men          | 55.8    | 43.8 - 67.7 |
|                              | Hispanic Women        | 58.4    | 48.7 - 68.2 |
| <b>AGE GROUP</b>             | 45-64                 | 61.1    | 57.9 - 64.2 |
|                              | 65 & Older            | 81.4    | 79.1 - 83.7 |
| <b>EDUCATION LEVEL</b>       | <High School          | 53.0    | 45.3 - 60.7 |
|                              | High School / GED     | 68.4    | 64.8 - 72.0 |
|                              | >High School          | 77.1    | 74.9 - 79.4 |
| <b>ANNUAL INCOME</b>         | <\$25,000             | 62.0    | 57.8 - 66.2 |
|                              | \$25,000-\$49,999     | 72.3    | 67.6 - 77.0 |
|                              | \$50,000 or More      | 78.6    | 75.8 - 81.5 |
| <b>MARITAL STATUS</b>        | Married/Couple        | 75.3    | 72.8 - 77.9 |
|                              | Not Married/Couple    | 66.4    | 63.1 - 69.6 |

CI=Confidence Interval  
 NA=Not available due to respondent counts of less than 30.

## Cancer Screening/Colorectal

## Percentage of adults aged 50 to 75 who have had a colorectal screening based on the most recent clinical guidelines

|                              |                       | Measure | 95% CI      |
|------------------------------|-----------------------|---------|-------------|
| <b>ALL</b>                   | Overall               | 70.4    | 68.2 - 72.6 |
| <b>SEX</b>                   | Men                   | 70.0    | 66.5 - 73.4 |
|                              | Women                 | 70.8    | 67.8 - 73.7 |
| <b>RACE/ETHNICITY</b>        | Non-Hisp. White       | 74.6    | 72.6 - 76.7 |
|                              | Non-Hisp. Black       | 61.4    | 53.2 - 69.6 |
|                              | Hispanic              | 61.4    | 53.2 - 69.7 |
| <b>SEX BY RACE/ETHNICITY</b> | Non-Hisp. White Men   | 75.1    | 72.1 - 78.2 |
|                              | Non-Hisp. White Women | 74.1    | 71.3 - 76.8 |
|                              | Non-Hisp. Black Men   | 58.8    | 46.5 - 71.0 |
|                              | Non-Hisp. Black Women | 63.8    | 52.7 - 74.9 |
|                              | Hispanic Men          | 56.8    | 43.2 - 70.3 |
|                              | Hispanic Women        | 65.1    | 55.0 - 75.3 |
| <b>AGE GROUP</b>             | 45-64                 | 61.8    | 58.6 - 65.0 |
|                              | 65 & Older            | 84.0    | 81.5 - 86.5 |
| <b>EDUCATION LEVEL</b>       | <High School          | 47.8    | 39.1 - 56.4 |
|                              | High School / GED     | 67.9    | 63.5 - 72.3 |
|                              | >High School          | 75.8    | 73.4 - 78.2 |
| <b>ANNUAL INCOME</b>         | <\$25,000             | 62.3    | 57.6 - 67.1 |
|                              | \$25,000-\$49,999     | 70.9    | 65.7 - 76.1 |
|                              | \$50,000 or More      | 75.9    | 72.6 - 79.2 |
| <b>MARITAL STATUS</b>        | Married/Couple        | 75.0    | 72.3 - 77.7 |
|                              | Not Married/Couple    | 63.9    | 60.1 - 67.7 |

**Cancer Screening/Prostate**

**Percentage of men 50 years of age and older who received a PSA test in the past 2 years**

|                              |                     | Measure | 95% CI      |
|------------------------------|---------------------|---------|-------------|
| <b>ALL</b>                   | Overall             | 48.3    | 45.0 - 51.5 |
| <b>SEX</b>                   | Men                 | 48.3    | 45.0 - 51.5 |
| <b>RACE/ETHNICITY</b>        | Non-Hisp. White     | 51.0    | 47.8 - 54.2 |
|                              | Non-Hisp. Black     | 39.0    | 28.0 - 50.0 |
|                              | Hispanic            | 47.1    | 35.3 - 58.9 |
| <b>SEX BY RACE/ETHNICITY</b> | Non-Hisp. White Men | 51.0    | 47.8 - 54.2 |
|                              | Non-Hisp. Black Men | 39.0    | 28.0 - 50.0 |
|                              | Hispanic Men        | 47.1    | 35.3 - 58.9 |
| <b>AGE GROUP</b>             | 45-64               | 34.4    | 29.9 - 38.9 |
|                              | 65 & Older          | 61.8    | 57.8 - 65.8 |
| <b>EDUCATION LEVEL</b>       | <High School        | 32.2    | 21.2 - 43.2 |
|                              | High School / GED   | 44.7    | 38.3 - 51.0 |
|                              | >High School        | 53.7    | 49.9 - 57.5 |
| <b>ANNUAL INCOME</b>         | <\$25,000           | 31.5    | 24.7 - 38.3 |
|                              | \$25,000-\$49,999   | 47.1    | 39.7 - 54.4 |
|                              | \$50,000 or More    | 55.1    | 50.4 - 59.8 |
| <b>MARITAL STATUS</b>        | Married/Couple      | 54.3    | 50.2 - 58.4 |
|                              | Not Married/Couple  | 36.8    | 31.9 - 41.7 |

**Percentage of men 50 years of age and older who have ever had a PSA test**

|                              |                     | Measure | 95% CI      |
|------------------------------|---------------------|---------|-------------|
| <b>ALL</b>                   | Overall             | 61.9    | 58.7 - 65.1 |
| <b>SEX</b>                   | Men                 | 61.9    | 58.7 - 65.1 |
| <b>RACE/ETHNICITY</b>        | Non-Hisp. White     | 64.7    | 61.6 - 67.8 |
|                              | Non-Hisp. Black     | 57.0    | 45.7 - 68.3 |
|                              | Hispanic            | 58.1    | 46.7 - 69.5 |
| <b>SEX BY RACE/ETHNICITY</b> | Non-Hisp. White Men | 64.7    | 61.6 - 67.8 |
|                              | Non-Hisp. Black Men | 57.0    | 45.7 - 68.3 |
|                              | Hispanic Men        | 58.1    | 46.7 - 69.5 |
| <b>AGE GROUP</b>             | 45-64               | 48.0    | 43.1 - 52.9 |
|                              | 65 & Older          | 75.3    | 71.7 - 78.9 |
| <b>EDUCATION LEVEL</b>       | <High School        | 43.2    | 31.9 - 54.4 |
|                              | High School / GED   | 59.1    | 52.9 - 65.3 |
|                              | >High School        | 67.8    | 64.3 - 71.4 |
| <b>ANNUAL INCOME</b>         | <\$25,000           | 46.2    | 39.0 - 53.3 |
|                              | \$25,000-\$49,999   | 61.7    | 54.7 - 68.7 |
|                              | \$50,000 or More    | 69.1    | 64.5 - 73.8 |
| <b>MARITAL STATUS</b>        | Married/Couple      | 68.3    | 64.5 - 72.1 |
|                              | Not Married/Couple  | 50.0    | 44.7 - 55.2 |

CI=Confidence Interval  
 NA=Not available due to respondent counts of less than 30.

**Clinical Breast Exam**

**Percentage of women 18 years of age and older who have ever had a clinical breast exam**

|                              |                       | Measure | 95% CI      |
|------------------------------|-----------------------|---------|-------------|
| <b>SEX</b>                   | Women                 | 85.3    | 83.5 - 87.1 |
| <b>RACE/ETHNICITY</b>        | Non-Hisp. White       | 90.2    | 88.6 - 91.9 |
|                              | Non-Hisp. Black       | 79.9    | 74.2 - 85.6 |
|                              | Hispanic              | 79.0    | 73.8 - 84.3 |
| <b>SEX BY RACE/ETHNICITY</b> | Non-Hisp. White Women | 90.2    | 88.6 - 91.9 |
|                              | Non-Hisp. Black Women | 79.9    | 74.2 - 85.6 |
|                              | Hispanic Women        | 79.0    | 73.8 - 84.3 |
| <b>AGE GROUP</b>             | 18-44                 | 77.7    | 74.1 - 81.4 |
|                              | 45-64                 | 92.2    | 89.8 - 94.6 |
|                              | 65 & Older            | 86.8    | 83.6 - 90.1 |
| <b>EDUCATION LEVEL</b>       | <High School          | 73.0    | 65.3 - 80.8 |
|                              | High School / GED     | 83.5    | 80.1 - 87.0 |
|                              | >High School          | 89.0    | 87.1 - 91.0 |
| <b>ANNUAL INCOME</b>         | <\$25,000             | 81.9    | 78.2 - 85.6 |
|                              | \$25,000-\$49,999     | 83.2    | 79.2 - 87.2 |
|                              | \$50,000 or More      | 94.0    | 92.0 - 96.0 |
| <b>MARITAL STATUS</b>        | Married/Couple        | 89.3    | 87.0 - 91.5 |
|                              | Not Married/Couple    | 81.3    | 78.4 - 84.1 |

**Percentage of women 18 years of age and older who have had a clinical breast exam in the past year**

|                              |                       | Measure | 95% CI      |
|------------------------------|-----------------------|---------|-------------|
| <b>SEX</b>                   | Women                 | 56.1    | 53.6 - 58.6 |
| <b>RACE/ETHNICITY</b>        | Non-Hisp. White       | 55.4    | 52.8 - 57.9 |
|                              | Non-Hisp. Black       | 56.9    | 49.6 - 64.2 |
|                              | Hispanic              | 58.1    | 51.1 - 65.1 |
| <b>SEX BY RACE/ETHNICITY</b> | Non-Hisp. White Women | 55.4    | 52.8 - 57.9 |
|                              | Non-Hisp. Black Women | 56.9    | 49.6 - 64.2 |
|                              | Hispanic Women        | 58.1    | 51.1 - 65.1 |
| <b>AGE GROUP</b>             | 18-44                 | 51.2    | 46.4 - 55.9 |
|                              | 45-64                 | 64.4    | 60.4 - 68.4 |
|                              | 65 & Older            | 52.2    | 48.3 - 56.1 |
| <b>EDUCATION LEVEL</b>       | <High School          | 44.9    | 36.1 - 53.6 |
|                              | High School / GED     | 54.0    | 49.0 - 59.0 |
|                              | >High School          | 59.7    | 56.8 - 62.6 |
| <b>ANNUAL INCOME</b>         | <\$25,000             | 48.4    | 43.3 - 53.5 |
|                              | \$25,000-\$49,999     | 52.0    | 46.7 - 57.3 |
|                              | \$50,000 or More      | 67.9    | 64.0 - 71.8 |
| <b>MARITAL STATUS</b>        | Married/Couple        | 60.0    | 56.5 - 63.4 |
|                              | Not Married/Couple    | 52.0    | 48.4 - 55.6 |

CI=Confidence Interval  
 NA=Not available due to respondent counts of less than 30.

**Clinical Breast Exam**

**Percentage of women 40 years of age and older who have had a clinical breast exam in the past year**

|                              |                       | Measure | 95% CI      |
|------------------------------|-----------------------|---------|-------------|
| <b>SEX</b>                   | Women                 | 58.5    | 55.7 - 61.3 |
| <b>RACE/ETHNICITY</b>        | Non-Hisp. White       | 57.3    | 54.6 - 60.0 |
|                              | Non-Hisp. Black       | 58.6    | 49.3 - 67.9 |
|                              | Hispanic              | 63.4    | 54.0 - 72.8 |
| <b>SEX BY RACE/ETHNICITY</b> | Non-Hisp. White Women | 57.3    | 54.6 - 60.0 |
|                              | Non-Hisp. Black Women | 58.6    | 49.3 - 67.9 |
|                              | Hispanic Women        | 63.4    | 54.0 - 72.8 |
| <b>AGE GROUP</b>             | 18-44                 | 56.6    | 45.3 - 67.8 |
|                              | 45-64                 | 64.4    | 60.4 - 68.4 |
|                              | 65 & Older            | 52.2    | 48.3 - 56.1 |
| <b>EDUCATION LEVEL</b>       | <High School          | 47.1    | 36.1 - 58.1 |
|                              | High School / GED     | 58.9    | 53.3 - 64.4 |
|                              | >High School          | 60.7    | 57.4 - 63.9 |
| <b>ANNUAL INCOME</b>         | <\$25,000             | 47.4    | 41.7 - 53.2 |
|                              | \$25,000-\$49,999     | 56.9    | 51.1 - 62.8 |
|                              | \$50,000 or More      | 69.0    | 64.7 - 73.2 |
| <b>MARITAL STATUS</b>        | Married/Couple        | 62.5    | 58.5 - 66.4 |
|                              | Not Married/Couple    | 53.8    | 49.8 - 57.7 |

**Percentage of women aged 50 to 64 who have had a clinical breast exam in the past year**

|                              |                       | Measure | 95% CI      |
|------------------------------|-----------------------|---------|-------------|
| <b>SEX</b>                   | Women                 | 63.4    | 59.1 - 67.7 |
| <b>RACE/ETHNICITY</b>        | Non-Hisp. White       | 61.0    | 56.5 - 65.4 |
|                              | Non-Hisp. Black       | 69.3    | 55.5 - 83.1 |
|                              | Hispanic              | 69.0    | 56.1 - 81.8 |
| <b>SEX BY RACE/ETHNICITY</b> | Non-Hisp. White Women | 61.0    | 56.5 - 65.4 |
|                              | Non-Hisp. Black Women | 69.3    | 55.5 - 83.1 |
|                              | Hispanic Women        | 69.0    | 56.1 - 81.8 |
| <b>AGE GROUP</b>             | 45-64                 | 63.4    | 59.1 - 67.7 |
| <b>EDUCATION LEVEL</b>       | <High School          | 50.8    | 33.9 - 67.8 |
|                              | High School / GED     | 61.3    | 52.6 - 70.0 |
|                              | >High School          | 66.3    | 61.1 - 71.5 |
| <b>ANNUAL INCOME</b>         | <\$25,000             | 49.3    | 40.5 - 58.1 |
|                              | \$25,000-\$49,999     | 64.6    | 54.7 - 74.5 |
|                              | \$50,000 or More      | 71.9    | 65.6 - 78.1 |
| <b>MARITAL STATUS</b>        | Married/Couple        | 66.2    | 60.6 - 71.8 |
|                              | Not Married/Couple    | 60.0    | 53.4 - 66.6 |

CI=Confidence Interval  
 NA=Not available due to respondent counts of less than 30.

2018 Florida BRFSS Data

**HIV/AIDS Screening**

**Percentage of adults less than 65 years old who have ever been tested for HIV**

|                              |                       | Measure | 95% CI      |
|------------------------------|-----------------------|---------|-------------|
| <b>ALL</b>                   | Overall               | 53.6    | 51.5 - 55.7 |
| <b>SEX</b>                   | Men                   | 50.5    | 47.5 - 53.5 |
|                              | Women                 | 56.7    | 53.8 - 59.5 |
| <b>RACE/ETHNICITY</b>        | Non-Hisp. White       | 48.0    | 45.7 - 50.4 |
|                              | Non-Hisp. Black       | 70.6    | 65.5 - 75.8 |
|                              | Hispanic              | 55.3    | 50.3 - 60.3 |
| <b>SEX BY RACE/ETHNICITY</b> | Non-Hisp. White Men   | 46.8    | 43.4 - 50.2 |
|                              | Non-Hisp. White Women | 49.2    | 46.0 - 52.4 |
|                              | Non-Hisp. Black Men   | 64.2    | 55.7 - 72.6 |
|                              | Non-Hisp. Black Women | 76.4    | 70.4 - 82.4 |
|                              | Hispanic Men          | 51.5    | 44.3 - 58.7 |
|                              | Hispanic Women        | 59.0    | 52.0 - 66.0 |
| <b>AGE GROUP</b>             | 18-44                 | 58.0    | 55.1 - 60.9 |
|                              | 45-64                 | 47.8    | 44.8 - 50.7 |
| <b>EDUCATION LEVEL</b>       | <High School          | 50.3    | 43.3 - 57.4 |
|                              | High School / GED     | 50.3    | 46.2 - 54.4 |
|                              | >High School          | 56.0    | 53.5 - 58.5 |
| <b>ANNUAL INCOME</b>         | <\$25,000             | 57.2    | 52.9 - 61.5 |
|                              | \$25,000-\$49,999     | 59.3    | 54.8 - 63.8 |
|                              | \$50,000 or More      | 51.6    | 48.5 - 54.8 |
| <b>MARITAL STATUS</b>        | Married/Couple        | 52.4    | 49.6 - 55.3 |
|                              | Not Married/Couple    | 55.2    | 52.1 - 58.3 |

**Percentage of adults less than 65 years old who had an HIV test in the past 12 months**

|                              |                       | Measure | 95% CI      |
|------------------------------|-----------------------|---------|-------------|
| <b>ALL</b>                   | Overall               | 21.1    | 19.2 - 23.0 |
| <b>SEX</b>                   | Men                   | 20.3    | 17.6 - 23.1 |
|                              | Women                 | 21.8    | 19.1 - 24.5 |
| <b>RACE/ETHNICITY</b>        | Non-Hisp. White       | 15.9    | 14.0 - 17.9 |
|                              | Non-Hisp. Black       | 40.1    | 33.8 - 46.5 |
|                              | Hispanic              | 20.7    | 16.2 - 25.2 |
| <b>SEX BY RACE/ETHNICITY</b> | Non-Hisp. White Men   | 17.3    | 14.4 - 20.2 |
|                              | Non-Hisp. White Women | 14.5    | 12.0 - 17.1 |
|                              | Non-Hisp. Black Men   | 33.3    | 23.8 - 42.7 |
|                              | Non-Hisp. Black Women | 45.9    | 37.3 - 54.5 |
|                              | Hispanic Men          | 20.7    | 14.4 - 27.1 |
|                              | Hispanic Women        | 20.6    | 14.3 - 27.0 |
| <b>AGE GROUP</b>             | 18-44                 | 26.8    | 23.9 - 29.6 |
|                              | 45-64                 | 13.5    | 11.1 - 15.9 |
| <b>EDUCATION LEVEL</b>       | <High School          | 20.6    | 13.8 - 27.5 |
|                              | High School / GED     | 20.3    | 16.6 - 24.0 |
|                              | >High School          | 21.6    | 19.3 - 23.9 |
| <b>ANNUAL INCOME</b>         | <\$25,000             | 27.5    | 23.1 - 31.8 |
|                              | \$25,000-\$49,999     | 23.6    | 19.0 - 28.2 |
|                              | \$50,000 or More      | 17.7    | 15.1 - 20.4 |
| <b>MARITAL STATUS</b>        | Married/Couple        | 17.4    | 14.8 - 19.9 |
|                              | Not Married/Couple    | 25.1    | 22.1 - 28.0 |

CI=Confidence Interval

NA=Not available due to respondent counts of less than 30.

2018 Florida BRFSS Data

**HIV/AIDS Screening**

**Percentage of adults who have ever been tested for HIV**

|                              |                       | <b>Measure</b> | <b>95% CI</b> |
|------------------------------|-----------------------|----------------|---------------|
| <b>ALL</b>                   | Overall               | 45.0           | 43.3 - 46.7   |
| <b>SEX</b>                   | Men                   | 44.3           | 41.8 - 46.8   |
|                              | Women                 | 45.7           | 43.4 - 48.0   |
| <b>RACE/ETHNICITY</b>        | Non-Hisp. White       | 37.0           | 35.3 - 38.8   |
|                              | Non-Hisp. Black       | 67.2           | 62.5 - 71.8   |
|                              | Hispanic              | 51.6           | 47.0 - 56.1   |
| <b>SEX BY RACE/ETHNICITY</b> | Non-Hisp. White Men   | 38.3           | 35.7 - 41.0   |
|                              | Non-Hisp. White Women | 35.7           | 33.4 - 38.0   |
|                              | Non-Hisp. Black Men   | 62.3           | 54.7 - 69.9   |
|                              | Non-Hisp. Black Women | 71.3           | 65.7 - 76.8   |
|                              | Hispanic Men          | 49.2           | 42.6 - 55.8   |
|                              | Hispanic Women        | 53.9           | 47.6 - 60.3   |
| <b>AGE GROUP</b>             | 18-44                 | 58.0           | 55.1 - 60.9   |
|                              | 45-64                 | 47.8           | 44.8 - 50.7   |
|                              | 65 & Older            | 21.6           | 19.0 - 24.2   |
| <b>EDUCATION LEVEL</b>       | <High School          | 43.3           | 37.5 - 49.2   |
|                              | High School / GED     | 41.4           | 38.1 - 44.7   |
|                              | >High School          | 47.4           | 45.4 - 49.4   |
| <b>ANNUAL INCOME</b>         | <\$25,000             | 49.6           | 46.1 - 53.2   |
|                              | \$25,000-\$49,999     | 47.7           | 44.0 - 51.5   |
|                              | \$50,000 or More      | 44.4           | 41.8 - 47.0   |
| <b>MARITAL STATUS</b>        | Married/Couple        | 42.8           | 40.5 - 45.0   |
|                              | Not Married/Couple    | 47.9           | 45.3 - 50.4   |

*CI=Confidence Interval*

*NA=Not available due to respondent counts of less than 30.*

2018 Florida BRFSS Data

**Immunization**

**Percentage of adults who received a flu shot in the past year**

|                              |                       | Measure | 95% CI      |
|------------------------------|-----------------------|---------|-------------|
| <b>ALL</b>                   | Overall               | 30.7    | 29.2 - 32.1 |
| <b>SEX</b>                   | Men                   | 30.4    | 28.3 - 32.6 |
|                              | Women                 | 30.9    | 28.9 - 32.8 |
| <b>RACE/ETHNICITY</b>        | Non-Hisp. White       | 36.3    | 34.7 - 37.9 |
|                              | Non-Hisp. Black       | 21.5    | 17.8 - 25.3 |
|                              | Hispanic              | 22.9    | 19.2 - 26.6 |
| <b>SEX BY RACE/ETHNICITY</b> | Non-Hisp. White Men   | 36.4    | 34.0 - 38.9 |
|                              | Non-Hisp. White Women | 36.2    | 34.0 - 38.3 |
|                              | Non-Hisp. Black Men   | 20.3    | 14.7 - 26.0 |
|                              | Non-Hisp. Black Women | 22.6    | 17.5 - 27.6 |
|                              | Hispanic Men          | 22.7    | 17.2 - 28.1 |
|                              | Hispanic Women        | 23.2    | 18.2 - 28.3 |
| <b>AGE GROUP</b>             | 18-44                 | 18.5    | 16.4 - 20.6 |
|                              | 45-64                 | 27.7    | 25.3 - 30.2 |
|                              | 65 & Older            | 52.8    | 50.2 - 55.4 |
| <b>EDUCATION LEVEL</b>       | <High School          | 25.6    | 20.7 - 30.4 |
|                              | High School / GED     | 27.9    | 25.2 - 30.6 |
|                              | >High School          | 33.2    | 31.4 - 34.9 |
| <b>ANNUAL INCOME</b>         | <\$25,000             | 28.6    | 25.5 - 31.7 |
|                              | \$25,000-\$49,999     | 28.4    | 25.4 - 31.3 |
|                              | \$50,000 or More      | 34.0    | 31.7 - 36.3 |
| <b>MARITAL STATUS</b>        | Married/Couple        | 33.1    | 31.1 - 35.1 |
|                              | Not Married/Couple    | 27.9    | 25.9 - 30.0 |

**Percentage of adults 65 years of age and older who received a flu shot in the past year**

|                              |                       | Measure | 95% CI      |
|------------------------------|-----------------------|---------|-------------|
| <b>ALL</b>                   | Overall               | 52.8    | 50.1 - 55.4 |
| <b>SEX</b>                   | Men                   | 56.2    | 52.3 - 60.2 |
|                              | Women                 | 49.9    | 46.4 - 53.4 |
| <b>RACE/ETHNICITY</b>        | Non-Hisp. White       | 56.4    | 53.8 - 58.9 |
|                              | Non-Hisp. Black       | 37.3    | 28.1 - 46.5 |
|                              | Hispanic              | 44.6    | 33.6 - 55.5 |
| <b>SEX BY RACE/ETHNICITY</b> | Non-Hisp. White Men   | 59.4    | 55.6 - 63.1 |
|                              | Non-Hisp. White Women | 53.9    | 50.5 - 57.2 |
|                              | Non-Hisp. Black Men   | 30.0    | 16.2 - 43.8 |
|                              | Non-Hisp. Black Women | 43.3    | 30.9 - 55.6 |
|                              | Hispanic Men          | 56.3    | 40.3 - 72.3 |
|                              | Hispanic Women        | 34.8    | 20.8 - 48.8 |
| <b>AGE GROUP</b>             | 65 & Older            | 52.8    | 50.2 - 55.4 |
| <b>EDUCATION LEVEL</b>       | <High School          | 49.1    | 38.9 - 59.3 |
|                              | High School / GED     | 50.8    | 46.1 - 55.6 |
|                              | >High School          | 55.1    | 52.1 - 58.0 |
| <b>ANNUAL INCOME</b>         | <\$25,000             | 51.2    | 45.3 - 57.1 |
|                              | \$25,000-\$49,999     | 49.3    | 43.9 - 54.7 |
|                              | \$50,000 or More      | 58.2    | 54.2 - 62.1 |
| <b>MARITAL STATUS</b>        | Married/Couple        | 55.3    | 51.7 - 58.8 |
|                              | Not Married/Couple    | 49.7    | 45.8 - 53.6 |

CI=Confidence Interval  
 NA=Not available due to respondent counts of less than 30.



2018 Florida BRFSS Data

**Immunization**

**Percentage of adults who have ever received a pneumonia vaccination**

|                              |                       | Measure | 95% CI      |
|------------------------------|-----------------------|---------|-------------|
| <b>ALL</b>                   | Overall               | 32.6    | 31.1 - 34.1 |
| <b>SEX</b>                   | Men                   | 31.8    | 29.5 - 34.0 |
|                              | Women                 | 33.4    | 31.4 - 35.5 |
| <b>RACE/ETHNICITY</b>        | Non-Hisp. White       | 39.7    | 38.0 - 41.3 |
|                              | Non-Hisp. Black       | 21.3    | 17.3 - 25.3 |
|                              | Hispanic              | 23.8    | 19.8 - 27.8 |
| <b>SEX BY RACE/ETHNICITY</b> | Non-Hisp. White Men   | 38.2    | 35.6 - 40.7 |
|                              | Non-Hisp. White Women | 41.0    | 38.7 - 43.2 |
|                              | Non-Hisp. Black Men   | 20.3    | 14.0 - 26.7 |
|                              | Non-Hisp. Black Women | 22.1    | 17.2 - 27.1 |
|                              | Hispanic Men          | 23.5    | 17.9 - 29.0 |
|                              | Hispanic Women        | 24.1    | 18.3 - 29.8 |
| <b>AGE GROUP</b>             | 18-44                 | 15.7    | 13.5 - 17.9 |
|                              | 45-64                 | 22.5    | 20.1 - 24.8 |
|                              | 65 & Older            | 67.3    | 64.8 - 69.9 |
| <b>EDUCATION LEVEL</b>       | <High School          | 30.6    | 25.2 - 36.0 |
|                              | High School / GED     | 30.8    | 27.9 - 33.6 |
|                              | >High School          | 34.0    | 32.2 - 35.8 |
| <b>ANNUAL INCOME</b>         | <\$25,000             | 33.3    | 30.1 - 36.5 |
|                              | \$25,000-\$49,999     | 32.9    | 29.5 - 36.2 |
|                              | \$50,000 or More      | 31.1    | 28.8 - 33.3 |
| <b>MARITAL STATUS</b>        | Married/Couple        | 33.2    | 31.1 - 35.2 |
|                              | Not Married/Couple    | 32.3    | 30.0 - 34.5 |

**Percentage of adults 65 years of age and older who have ever received a pneumonia vaccination**

|                              |                       | Measure | 95% CI      |
|------------------------------|-----------------------|---------|-------------|
| <b>ALL</b>                   | Overall               | 67.3    | 64.7 - 69.9 |
| <b>SEX</b>                   | Men                   | 67.3    | 63.2 - 71.4 |
|                              | Women                 | 67.3    | 64.0 - 70.6 |
| <b>RACE/ETHNICITY</b>        | Non-Hisp. White       | 72.4    | 70.1 - 74.8 |
|                              | Non-Hisp. Black       | 44.4    | 34.3 - 54.5 |
|                              | Hispanic              | 55.3    | 44.5 - 66.1 |
| <b>SEX BY RACE/ETHNICITY</b> | Non-Hisp. White Men   | 73.4    | 70.0 - 76.8 |
|                              | Non-Hisp. White Women | 71.6    | 68.4 - 74.8 |
|                              | Non-Hisp. Black Men   | 41.5    | 25.6 - 57.4 |
|                              | Non-Hisp. Black Women | 46.8    | 33.8 - 59.7 |
|                              | Hispanic Men          | 53.0    | 36.3 - 69.7 |
|                              | Hispanic Women        | 57.2    | 43.5 - 71.0 |
| <b>AGE GROUP</b>             | 65 & Older            | 67.3    | 64.8 - 69.9 |
| <b>EDUCATION LEVEL</b>       | <High School          | 61.0    | 51.0 - 70.9 |
|                              | High School / GED     | 60.5    | 55.5 - 65.4 |
|                              | >High School          | 72.6    | 70.0 - 75.3 |
| <b>ANNUAL INCOME</b>         | <\$25,000             | 59.8    | 53.9 - 65.7 |
|                              | \$25,000-\$49,999     | 66.8    | 61.5 - 72.0 |
|                              | \$50,000 or More      | 75.0    | 71.4 - 78.6 |
| <b>MARITAL STATUS</b>        | Married/Couple        | 69.0    | 65.4 - 72.5 |
|                              | Not Married/Couple    | 65.5    | 61.8 - 69.3 |

CI=Confidence Interval

NA=Not available due to respondent counts of less than 30.

**Injury Prevention**

**Percentage of adults who always or nearly always use a seatbelt when riding in a car**

|                              |                       | <b>Measure</b> | <b>95% CI</b> |
|------------------------------|-----------------------|----------------|---------------|
| <b>ALL</b>                   | Overall               | 94.3           | 93.4 - 95.1   |
| <b>SEX</b>                   | Men                   | 92.5           | 91.1 - 94.0   |
|                              | Women                 | 95.9           | 95.0 - 96.8   |
| <b>RACE/ETHNICITY</b>        | Non-Hisp. White       | 95.5           | 94.7 - 96.3   |
|                              | Non-Hisp. Black       | 90.7           | 87.6 - 93.8   |
|                              | Hispanic              | 93.7           | 91.4 - 96.0   |
| <b>SEX BY RACE/ETHNICITY</b> | Non-Hisp. White Men   | 94.1           | 92.8 - 95.4   |
|                              | Non-Hisp. White Women | 96.8           | 96.0 - 97.6   |
|                              | Non-Hisp. Black Men   | 86.9           | 81.2 - 92.6   |
|                              | Non-Hisp. Black Women | 93.9           | 90.9 - 97.0   |
|                              | Hispanic Men          | 91.2           | 87.2 - 95.2   |
|                              | Hispanic Women        | 96.2           | 93.8 - 98.5   |
| <b>AGE GROUP</b>             | 18-44                 | 92.6           | 91.0 - 94.2   |
|                              | 45-64                 | 94.7           | 93.2 - 96.1   |
|                              | 65 & Older            | 96.4           | 95.3 - 97.5   |
| <b>EDUCATION LEVEL</b>       | <High School          | 86.5           | 82.3 - 90.7   |
|                              | High School / GED     | 93.0           | 91.4 - 94.7   |
|                              | >High School          | 96.6           | 95.9 - 97.4   |
| <b>ANNUAL INCOME</b>         | <\$25,000             | 91.3           | 89.0 - 93.6   |
|                              | \$25,000-\$49,999     | 94.9           | 93.4 - 96.3   |
|                              | \$50,000 or More      | 95.6           | 94.4 - 96.8   |
| <b>MARITAL STATUS</b>        | Married/Couple        | 95.3           | 94.3 - 96.4   |
|                              | Not Married/Couple    | 93.2           | 91.9 - 94.5   |

*CI=Confidence Interval  
NA=Not available due to respondent counts of less than 30.*

2018 Florida BRFSS Data

**Alcohol Consumption**

**Percentage of adults who engage in heavy or binge drinking**

|                              |                       | Measure | 95% CI      |
|------------------------------|-----------------------|---------|-------------|
| <b>ALL</b>                   | Overall               | 18.2    | 16.9 - 19.5 |
| <b>SEX</b>                   | Men                   | 23.0    | 20.9 - 25.2 |
|                              | Women                 | 13.7    | 12.1 - 15.2 |
| <b>RACE/ETHNICITY</b>        | Non-Hisp. White       | 20.0    | 18.6 - 21.5 |
|                              | Non-Hisp. Black       | 12.8    | 9.2 - 16.4  |
|                              | Hispanic              | 17.7    | 14.2 - 21.2 |
| <b>SEX BY RACE/ETHNICITY</b> | Non-Hisp. White Men   | 23.8    | 21.5 - 26.1 |
|                              | Non-Hisp. White Women | 16.4    | 14.6 - 18.2 |
|                              | Non-Hisp. Black Men   | 17.5    | 11.4 - 23.5 |
|                              | Non-Hisp. Black Women | 8.8     | 4.5 - 13.1  |
|                              | Hispanic Men          | 26.0    | 20.0 - 32.0 |
|                              | Hispanic Women        | 10.1    | 6.5 - 13.6  |
| <b>AGE GROUP</b>             | 18-44                 | 24.8    | 22.4 - 27.3 |
|                              | 45-64                 | 18.5    | 16.3 - 20.8 |
|                              | 65 & Older            | 7.7     | 6.6 - 8.9   |
| <b>EDUCATION LEVEL</b>       | <High School          | 17.4    | 12.7 - 22.0 |
|                              | High School / GED     | 17.0    | 14.6 - 19.4 |
|                              | >High School          | 19.0    | 17.4 - 20.6 |
| <b>ANNUAL INCOME</b>         | <\$25,000             | 17.4    | 14.6 - 20.1 |
|                              | \$25,000-\$49,999     | 18.5    | 15.5 - 21.6 |
|                              | \$50,000 or More      | 21.2    | 19.1 - 23.3 |
| <b>MARITAL STATUS</b>        | Married/Couple        | 17.2    | 15.4 - 18.9 |
|                              | Not Married/Couple    | 19.2    | 17.3 - 21.2 |

**Percentage of adults who have driven after having too much alcohol to drink in the past 30 days**

|                              |                       | Measure | 95% CI     |
|------------------------------|-----------------------|---------|------------|
| <b>ALL</b>                   | Overall               | 3.7     | 2.8 - 4.7  |
| <b>SEX</b>                   | Men                   | 5.1     | 3.6 - 6.6  |
|                              | Women                 | 2.1     | 1.0 - 3.2  |
| <b>RACE/ETHNICITY</b>        | Non-Hisp. White       | 3.5     | 2.5 - 4.4  |
|                              | Non-Hisp. Black       | 5.4     | 1.1 - 9.8  |
|                              | Hispanic              | 4.1     | 1.5 - 6.6  |
| <b>SEX BY RACE/ETHNICITY</b> | Non-Hisp. White Men   | 4.9     | 3.3 - 6.5  |
|                              | Non-Hisp. White Women | 2.0     | 1.0 - 2.9  |
|                              | Non-Hisp. Black Men   | 4.7     | 0.2 - 9.2  |
|                              | Non-Hisp. Black Women | 6.1     | 0.0 - 13.4 |
|                              | Hispanic Men          | 6.4     | 2.2 - 10.6 |
|                              | Hispanic Women        | 0.7     | 0.0 - 1.7  |
| <b>AGE GROUP</b>             | 18-44                 | 5.3     | 3.4 - 7.1  |
|                              | 45-64                 | 3.5     | 2.0 - 5.0  |
|                              | 65 & Older            | 1.3     | 0.7 - 1.9  |
| <b>EDUCATION LEVEL</b>       | <High School          | 7.9     | 2.0 - 13.8 |
|                              | High School / GED     | 4.5     | 2.2 - 6.7  |
|                              | >High School          | 2.9     | 2.1 - 3.6  |
| <b>ANNUAL INCOME</b>         | <\$25,000             | 4.7     | 1.9 - 7.6  |
|                              | \$25,000-\$49,999     | 4.2     | 1.8 - 6.6  |
|                              | \$50,000 or More      | 3.9     | 2.7 - 5.2  |
| <b>MARITAL STATUS</b>        | Married/Couple        | 2.6     | 1.7 - 3.4  |
|                              | Not Married/Couple    | 5.1     | 3.2 - 6.9  |

CI=Confidence Interval

NA=Not available due to respondent counts of less than 30.

2018 Florida BRFSS Data

**Marijuana Use**

**Percentage of adults who used marijuana or hashish during the past 30 days**

|                              |                       | Measure | 95% CI      |
|------------------------------|-----------------------|---------|-------------|
| <b>ALL</b>                   | Overall               | 10.0    | 8.8 - 11.2  |
| <b>SEX</b>                   | Men                   | 12.9    | 11.0 - 14.9 |
|                              | Women                 | 7.3     | 5.9 - 8.7   |
| <b>RACE/ETHNICITY</b>        | Non-Hisp. White       | 9.3     | 8.2 - 10.5  |
|                              | Non-Hisp. Black       | 12.1    | 8.2 - 16.1  |
|                              | Hispanic              | 9.4     | 6.3 - 12.5  |
| <b>SEX BY RACE/ETHNICITY</b> | Non-Hisp. White Men   | 12.3    | 10.4 - 14.3 |
|                              | Non-Hisp. White Women | 6.7     | 5.3 - 8.1   |
|                              | Non-Hisp. Black Men   | 12.5    | 7.5 - 17.5  |
|                              | Non-Hisp. Black Women | 11.8    | 6.0 - 17.7  |
|                              | Hispanic Men          | 14.8    | 9.2 - 20.5  |
|                              | Hispanic Women        | 4.0     | 1.7 - 6.2   |
| <b>AGE GROUP</b>             | 18-44                 | 16.8    | 14.2 - 19.4 |
|                              | 45-64                 | 7.9     | 6.3 - 9.6   |
|                              | 65 & Older            | 3.2     | 2.2 - 4.1   |
| <b>EDUCATION LEVEL</b>       | <High School          | 12.6    | 8.4 - 16.8  |
|                              | High School / GED     | 9.9     | 7.7 - 12.1  |
|                              | >High School          | 9.4     | 8.0 - 10.9  |
| <b>ANNUAL INCOME</b>         | <\$25,000             | 11.0    | 8.5 - 13.4  |
|                              | \$25,000-\$49,999     | 11.7    | 9.0 - 14.5  |
|                              | \$50,000 or More      | 9.1     | 7.3 - 11.0  |
| <b>MARITAL STATUS</b>        | Married/Couple        | 7.3     | 5.9 - 8.7   |
|                              | Not Married/Couple    | 13.0    | 11.1 - 15.0 |

CI=Confidence Interval

NA=Not available due to respondent counts of less than 30.

2018 Florida BRFSS Data

Physical Activity & Nutrition

Percentage of adults who are sedentary

|                              |                       | Measure | 95% CI      |
|------------------------------|-----------------------|---------|-------------|
| <b>ALL</b>                   | Overall               | 26.8    | 25.4 - 28.3 |
| <b>SEX</b>                   | Men                   | 24.1    | 22.0 - 26.2 |
|                              | Women                 | 29.4    | 27.4 - 31.4 |
| <b>RACE/ETHNICITY</b>        | Non-Hisp. White       | 23.7    | 22.3 - 25.2 |
|                              | Non-Hisp. Black       | 28.1    | 23.9 - 32.4 |
|                              | Hispanic              | 33.7    | 29.6 - 37.8 |
| <b>SEX BY RACE/ETHNICITY</b> | Non-Hisp. White Men   | 21.9    | 19.7 - 24.0 |
|                              | Non-Hisp. White Women | 25.5    | 23.6 - 27.5 |
|                              | Non-Hisp. Black Men   | 25.0    | 18.8 - 31.1 |
|                              | Non-Hisp. Black Women | 30.9    | 25.1 - 36.8 |
|                              | Hispanic Men          | 29.9    | 24.0 - 35.7 |
|                              | Hispanic Women        | 37.5    | 31.7 - 43.2 |
| <b>AGE GROUP</b>             | 18-44                 | 22.2    | 19.8 - 24.6 |
|                              | 45-64                 | 29.0    | 26.3 - 31.6 |
|                              | 65 & Older            | 31.1    | 28.6 - 33.6 |
| <b>EDUCATION LEVEL</b>       | <High School          | 44.2    | 38.7 - 49.7 |
|                              | High School / GED     | 32.2    | 29.2 - 35.1 |
|                              | >High School          | 20.1    | 18.6 - 21.7 |
| <b>ANNUAL INCOME</b>         | <\$25,000             | 38.1    | 34.9 - 41.3 |
|                              | \$25,000-\$49,999     | 28.4    | 25.2 - 31.5 |
|                              | \$50,000 or More      | 17.3    | 15.1 - 19.4 |
| <b>MARITAL STATUS</b>        | Married/Couple        | 24.2    | 22.2 - 26.2 |
|                              | Not Married/Couple    | 29.8    | 27.7 - 32.0 |

CI=Confidence Interval

NA=Not available due to respondent counts of less than 30.

2018 Florida BRFSS Data

**Tobacco Use & Exposure**

**Percentage of adults who are current smokers**

|                              |                       | Measure | 95% CI      |
|------------------------------|-----------------------|---------|-------------|
| <b>ALL</b>                   | Overall               | 14.5    | 13.3 - 15.6 |
| <b>SEX</b>                   | Men                   | 16.2    | 14.4 - 18.1 |
|                              | Women                 | 12.8    | 11.5 - 14.1 |
| <b>RACE/ETHNICITY</b>        | Non-Hisp. White       | 15.9    | 14.6 - 17.2 |
|                              | Non-Hisp. Black       | 11.5    | 8.3 - 14.6  |
|                              | Hispanic              | 12.6    | 9.7 - 15.6  |
| <b>SEX BY RACE/ETHNICITY</b> | Non-Hisp. White Men   | 15.6    | 13.7 - 17.6 |
|                              | Non-Hisp. White Women | 16.2    | 14.5 - 17.9 |
|                              | Non-Hisp. Black Men   | 15.6    | 9.9 - 21.3  |
|                              | Non-Hisp. Black Women | 8.0     | 4.9 - 11.1  |
|                              | Hispanic Men          | 17.8    | 12.6 - 23.0 |
|                              | Hispanic Women        | 7.9     | 5.2 - 10.6  |
| <b>AGE GROUP</b>             | 18-44                 | 15.3    | 13.4 - 17.3 |
|                              | 45-64                 | 18.7    | 16.6 - 20.9 |
|                              | 65 & Older            | 8.2     | 6.8 - 9.5   |
| <b>EDUCATION LEVEL</b>       | <High School          | 21.2    | 17.2 - 25.3 |
|                              | High School / GED     | 17.0    | 14.7 - 19.2 |
|                              | >High School          | 11.8    | 10.5 - 13.1 |
| <b>ANNUAL INCOME</b>         | <\$25,000             | 20.7    | 18.1 - 23.3 |
|                              | \$25,000-\$49,999     | 16.0    | 13.2 - 18.7 |
|                              | \$50,000 or More      | 9.9     | 8.4 - 11.3  |
| <b>MARITAL STATUS</b>        | Married/Couple        | 11.4    | 10.0 - 12.8 |
|                              | Not Married/Couple    | 17.9    | 16.1 - 19.7 |

**Percentage of adults who are former smokers**

|                              |                       | Measure | 95% CI      |
|------------------------------|-----------------------|---------|-------------|
| <b>ALL</b>                   | Overall               | 27.4    | 26.0 - 28.8 |
| <b>SEX</b>                   | Men                   | 30.4    | 28.3 - 32.5 |
|                              | Women                 | 24.6    | 22.7 - 26.5 |
| <b>RACE/ETHNICITY</b>        | Non-Hisp. White       | 33.3    | 31.7 - 34.9 |
|                              | Non-Hisp. Black       | 14.0    | 10.8 - 17.2 |
|                              | Hispanic              | 23.2    | 19.2 - 27.1 |
| <b>SEX BY RACE/ETHNICITY</b> | Non-Hisp. White Men   | 36.5    | 34.1 - 38.9 |
|                              | Non-Hisp. White Women | 30.2    | 28.2 - 32.3 |
|                              | Non-Hisp. Black Men   | 18.8    | 13.5 - 24.1 |
|                              | Non-Hisp. Black Women | 10.0    | 6.1 - 14.0  |
|                              | Hispanic Men          | 24.7    | 19.1 - 30.2 |
|                              | Hispanic Women        | 21.8    | 16.1 - 27.5 |
| <b>AGE GROUP</b>             | 18-44                 | 16.2    | 14.1 - 18.3 |
|                              | 45-64                 | 28.7    | 26.1 - 31.3 |
|                              | 65 & Older            | 43.4    | 40.8 - 46.1 |
| <b>EDUCATION LEVEL</b>       | <High School          | 21.7    | 17.3 - 26.2 |
|                              | High School / GED     | 30.0    | 27.0 - 33.0 |
|                              | >High School          | 27.3    | 25.6 - 29.0 |
| <b>ANNUAL INCOME</b>         | <\$25,000             | 27.1    | 24.1 - 30.0 |
|                              | \$25,000-\$49,999     | 28.0    | 24.8 - 31.1 |
|                              | \$50,000 or More      | 29.3    | 27.1 - 31.4 |
| <b>MARITAL STATUS</b>        | Married/Couple        | 30.4    | 28.4 - 32.5 |
|                              | Not Married/Couple    | 23.9    | 22.0 - 25.8 |

CI=Confidence Interval  
 NA=Not available due to respondent counts of less than 30.

2018 Florida BRFSS Data

**Tobacco Use & Exposure**

**Percentage of adults who have never smoked**

|                              |                       | Measure | 95% CI      |
|------------------------------|-----------------------|---------|-------------|
| <b>ALL</b>                   | Overall               | 58.1    | 56.5 - 59.7 |
| <b>SEX</b>                   | Men                   | 53.3    | 50.9 - 55.7 |
|                              | Women                 | 62.6    | 60.5 - 64.7 |
| <b>RACE/ETHNICITY</b>        | Non-Hisp. White       | 50.8    | 49.1 - 52.5 |
|                              | Non-Hisp. Black       | 74.5    | 70.3 - 78.7 |
|                              | Hispanic              | 64.2    | 59.8 - 68.6 |
| <b>SEX BY RACE/ETHNICITY</b> | Non-Hisp. White Men   | 47.9    | 45.3 - 50.4 |
|                              | Non-Hisp. White Women | 53.6    | 51.3 - 55.9 |
|                              | Non-Hisp. Black Men   | 65.6    | 58.5 - 72.7 |
|                              | Non-Hisp. Black Women | 81.9    | 77.1 - 86.8 |
|                              | Hispanic Men          | 57.6    | 51.2 - 63.9 |
|                              | Hispanic Women        | 70.3    | 64.4 - 76.2 |
| <b>AGE GROUP</b>             | 18-44                 | 68.4    | 65.8 - 71.0 |
|                              | 45-64                 | 52.6    | 49.7 - 55.5 |
|                              | 65 & Older            | 48.4    | 45.7 - 51.0 |
| <b>EDUCATION LEVEL</b>       | <High School          | 57.0    | 51.6 - 62.5 |
|                              | High School / GED     | 53.0    | 49.8 - 56.2 |
|                              | >High School          | 60.9    | 59.0 - 62.8 |
| <b>ANNUAL INCOME</b>         | <\$25,000             | 52.2    | 48.8 - 55.6 |
|                              | \$25,000-\$49,999     | 56.0    | 52.5 - 59.6 |
|                              | \$50,000 or More      | 60.9    | 58.5 - 63.3 |
| <b>MARITAL STATUS</b>        | Married/Couple        | 58.2    | 56.0 - 60.4 |
|                              | Not Married/Couple    | 58.2    | 55.8 - 60.5 |

**Percentage of adult current smokers who tried to quit smoking at least once in the past year**

|                              |                       | Measure | 95% CI      |
|------------------------------|-----------------------|---------|-------------|
| <b>ALL</b>                   | Overall               | 57.0    | 52.8 - 61.1 |
| <b>SEX</b>                   | Men                   | 55.1    | 48.7 - 61.4 |
|                              | Women                 | 59.1    | 54.1 - 64.2 |
| <b>RACE/ETHNICITY</b>        | Non-Hisp. White       | 54.0    | 49.6 - 58.4 |
|                              | Non-Hisp. Black       | 75.4    | 64.6 - 86.2 |
|                              | Hispanic              | 54.2    | 41.8 - 66.6 |
| <b>SEX BY RACE/ETHNICITY</b> | Non-Hisp. White Men   | 53.4    | 46.8 - 60.1 |
|                              | Non-Hisp. White Women | 54.5    | 48.8 - 60.2 |
|                              | Non-Hisp. Black Men   | 75.6    | 60.9 - 90.3 |
|                              | Non-Hisp. Black Women | 75.0    | 59.2 - 90.8 |
|                              | Hispanic Men          | 47.5    | 31.5 - 63.4 |
|                              | Hispanic Women        | 68.2    | 52.7 - 83.8 |
| <b>AGE GROUP</b>             | 18-44                 | 63.8    | 57.1 - 70.4 |
|                              | 45-64                 | 53.7    | 47.3 - 60.1 |
|                              | 65 & Older            | 46.4    | 38.5 - 54.2 |
| <b>EDUCATION LEVEL</b>       | <High School          | 61.1    | 51.0 - 71.2 |
|                              | High School / GED     | 53.5    | 46.3 - 60.7 |
|                              | >High School          | 57.8    | 51.8 - 63.7 |
| <b>ANNUAL INCOME</b>         | <\$25,000             | 63.3    | 56.7 - 69.8 |
|                              | \$25,000-\$49,999     | 51.8    | 42.2 - 61.5 |
|                              | \$50,000 or More      | 48.0    | 40.2 - 55.9 |
| <b>MARITAL STATUS</b>        | Married/Couple        | 52.4    | 46.0 - 58.9 |
|                              | Not Married/Couple    | 59.8    | 54.3 - 65.4 |

CI=Confidence Interval

NA=Not available due to respondent counts of less than 30.

2018 Florida BRFSS Data

**Tobacco Use & Exposure**

**Percentage of adults who are current e-cigarette users**

|                              |                       | Measure | 95% CI     |
|------------------------------|-----------------------|---------|------------|
| <b>ALL</b>                   | Overall               | 5.9     | 5.0 - 6.8  |
| <b>SEX</b>                   | Men                   | 7.1     | 5.6 - 8.6  |
|                              | Women                 | 4.8     | 3.7 - 5.9  |
| <b>RACE/ETHNICITY</b>        | Non-Hisp. White       | 5.7     | 4.8 - 6.6  |
|                              | Non-Hisp. Black       | 4.7     | 1.9 - 7.4  |
|                              | Hispanic              | 7.2     | 4.5 - 10.0 |
| <b>SEX BY RACE/ETHNICITY</b> | Non-Hisp. White Men   | 6.6     | 5.2 - 8.0  |
|                              | Non-Hisp. White Women | 4.9     | 3.8 - 6.0  |
|                              | Non-Hisp. Black Men   | 5.1     | 1.3 - 8.9  |
|                              | Non-Hisp. Black Women | 4.3     | 0.3 - 8.3  |
|                              | Hispanic Men          | 9.9     | 5.3 - 14.4 |
|                              | Hispanic Women        | 4.6     | 1.6 - 7.7  |
| <b>AGE GROUP</b>             | 18-44                 | 11.4    | 9.2 - 13.7 |
|                              | 45-64                 | 3.5     | 2.7 - 4.3  |
|                              | 65 & Older            | 1.2     | 0.7 - 1.7  |
| <b>EDUCATION LEVEL</b>       | <High School          | 4.8     | 2.7 - 6.9  |
|                              | High School / GED     | 7.4     | 5.4 - 9.4  |
|                              | >High School          | 5.4     | 4.3 - 6.5  |
| <b>ANNUAL INCOME</b>         | <\$25,000             | 6.3     | 4.5 - 8.2  |
|                              | \$25,000-\$49,999     | 7.5     | 5.2 - 9.8  |
|                              | \$50,000 or More      | 4.9     | 3.6 - 6.2  |
| <b>MARITAL STATUS</b>        | Married/Couple        | 4.1     | 3.0 - 5.1  |
|                              | Not Married/Couple    | 8.0     | 6.4 - 9.6  |

**Percentage of adults who are former e-cigarette users**

|                              |                       | Measure | 95% CI      |
|------------------------------|-----------------------|---------|-------------|
| <b>ALL</b>                   | Overall               | 17.3    | 15.9 - 18.7 |
| <b>SEX</b>                   | Men                   | 18.9    | 16.7 - 21.1 |
|                              | Women                 | 15.9    | 14.1 - 17.7 |
| <b>RACE/ETHNICITY</b>        | Non-Hisp. White       | 19.0    | 17.5 - 20.5 |
|                              | Non-Hisp. Black       | 13.0    | 9.6 - 16.5  |
|                              | Hispanic              | 15.7    | 11.8 - 19.6 |
| <b>SEX BY RACE/ETHNICITY</b> | Non-Hisp. White Men   | 19.4    | 17.0 - 21.7 |
|                              | Non-Hisp. White Women | 18.7    | 16.7 - 20.8 |
|                              | Non-Hisp. Black Men   | 15.1    | 9.6 - 20.5  |
|                              | Non-Hisp. Black Women | 11.4    | 7.0 - 15.8  |
|                              | Hispanic Men          | 19.9    | 13.9 - 26.0 |
|                              | Hispanic Women        | 11.5    | 6.7 - 16.3  |
| <b>AGE GROUP</b>             | 18-44                 | 25.5    | 22.6 - 28.3 |
|                              | 45-64                 | 17.4    | 15.0 - 19.7 |
|                              | 65 & Older            | 6.4     | 5.2 - 7.5   |
| <b>EDUCATION LEVEL</b>       | <High School          | 14.0    | 10.3 - 17.7 |
|                              | High School / GED     | 17.6    | 15.2 - 20.0 |
|                              | >High School          | 18.2    | 16.2 - 20.1 |
| <b>ANNUAL INCOME</b>         | <\$25,000             | 19.2    | 16.3 - 22.1 |
|                              | \$25,000-\$49,999     | 17.2    | 14.2 - 20.3 |
|                              | \$50,000 or More      | 17.2    | 14.9 - 19.5 |
| <b>MARITAL STATUS</b>        | Married/Couple        | 14.3    | 12.6 - 15.9 |
|                              | Not Married/Couple    | 20.7    | 18.4 - 22.9 |

CI=Confidence Interval

NA=Not available due to respondent counts of less than 30.



2018 Florida BRFSS Data

**Tobacco Use & Exposure**

**Percentage of adults who have never used e-cigarettes**

|                              |                       | Measure | 95% CI      |
|------------------------------|-----------------------|---------|-------------|
| <b>ALL</b>                   | Overall               | 76.7    | 75.2 - 78.3 |
| <b>SEX</b>                   | Men                   | 74.0    | 71.5 - 76.4 |
|                              | Women                 | 79.2    | 77.2 - 81.2 |
| <b>RACE/ETHNICITY</b>        | Non-Hisp. White       | 75.3    | 73.6 - 76.9 |
|                              | Non-Hisp. Black       | 82.3    | 78.1 - 86.5 |
|                              | Hispanic              | 77.1    | 72.6 - 81.6 |
| <b>SEX BY RACE/ETHNICITY</b> | Non-Hisp. White Men   | 74.0    | 71.5 - 76.6 |
|                              | Non-Hisp. White Women | 76.3    | 74.1 - 78.5 |
|                              | Non-Hisp. Black Men   | 79.7    | 73.4 - 86.1 |
|                              | Non-Hisp. Black Women | 84.3    | 78.7 - 90.0 |
|                              | Hispanic Men          | 70.2    | 63.3 - 77.1 |
|                              | Hispanic Women        | 83.9    | 78.4 - 89.4 |
| <b>AGE GROUP</b>             | 18-44                 | 63.1    | 59.9 - 66.3 |
|                              | 45-64                 | 79.1    | 76.7 - 81.5 |
|                              | 65 & Older            | 92.4    | 91.1 - 93.7 |
| <b>EDUCATION LEVEL</b>       | <High School          | 81.2    | 77.0 - 85.3 |
|                              | High School / GED     | 74.9    | 72.0 - 77.9 |
|                              | >High School          | 76.4    | 74.4 - 78.5 |
| <b>ANNUAL INCOME</b>         | <\$25,000             | 74.4    | 71.2 - 77.7 |
|                              | \$25,000-\$49,999     | 75.2    | 71.7 - 78.8 |
|                              | \$50,000 or More      | 77.9    | 75.4 - 80.4 |
| <b>MARITAL STATUS</b>        | Married/Couple        | 81.6    | 79.7 - 83.5 |
|                              | Not Married/Couple    | 71.3    | 68.8 - 73.9 |

**Percentage of adults who currently use chewing tobacco, snuff, or snus some days or every day**

|                              |                       | Measure | 95% CI    |
|------------------------------|-----------------------|---------|-----------|
| <b>ALL</b>                   | Overall               | 2.9     | 2.3 - 3.4 |
| <b>SEX</b>                   | Men                   | 4.6     | 3.6 - 5.5 |
|                              | Women                 | 1.3     | 0.7 - 1.9 |
| <b>RACE/ETHNICITY</b>        | Non-Hisp. White       | 3.2     | 2.6 - 3.9 |
|                              | Non-Hisp. Black       | 3.7     | 1.3 - 6.0 |
|                              | Hispanic              | 1.4     | 0.5 - 2.3 |
| <b>SEX BY RACE/ETHNICITY</b> | Non-Hisp. White Men   | 5.6     | 4.4 - 6.8 |
|                              | Non-Hisp. White Women | 1.0     | 0.5 - 1.5 |
|                              | Non-Hisp. Black Men   | 5.0     | 1.4 - 8.5 |
|                              | Non-Hisp. Black Women | 2.6     | 0.0 - 5.7 |
|                              | Hispanic Men          | 2.0     | 0.4 - 3.6 |
|                              | Hispanic Women        | 0.8     | 0.0 - 1.8 |
| <b>AGE GROUP</b>             | 18-44                 | 4.0     | 2.8 - 5.1 |
|                              | 45-64                 | 2.6     | 2.0 - 3.3 |
|                              | 65 & Older            | 1.5     | 0.9 - 2.1 |
| <b>EDUCATION LEVEL</b>       | <High School          | 2.8     | 1.6 - 4.0 |
|                              | High School / GED     | 3.6     | 2.3 - 4.8 |
|                              | >High School          | 2.6     | 1.9 - 3.2 |
| <b>ANNUAL INCOME</b>         | <\$25,000             | 2.9     | 1.8 - 3.9 |
|                              | \$25,000-\$49,999     | 2.5     | 1.3 - 3.7 |
|                              | \$50,000 or More      | 3.5     | 2.5 - 4.5 |
| <b>MARITAL STATUS</b>        | Married/Couple        | 2.6     | 1.9 - 3.4 |
|                              | Not Married/Couple    | 3.1     | 2.2 - 4.0 |

CI=Confidence Interval

NA=Not available due to respondent counts of less than 30.

2018 Florida BRFSS Data

**Health Status & Quality of Life**

**Percentage of adults who said their overall health was "good" to "excellent"**

|                              |                       | Measure | 95% CI      |
|------------------------------|-----------------------|---------|-------------|
| <b>ALL</b>                   | Overall               | 79.2    | 77.8 - 80.5 |
| <b>SEX</b>                   | Men                   | 79.3    | 77.3 - 81.3 |
|                              | Women                 | 79.1    | 77.2 - 80.9 |
| <b>RACE/ETHNICITY</b>        | Non-Hisp. White       | 81.8    | 80.5 - 83.1 |
|                              | Non-Hisp. Black       | 80.5    | 76.9 - 84.0 |
|                              | Hispanic              | 72.0    | 68.1 - 76.0 |
| <b>SEX BY RACE/ETHNICITY</b> | Non-Hisp. White Men   | 81.8    | 79.8 - 83.8 |
|                              | Non-Hisp. White Women | 81.8    | 80.1 - 83.5 |
|                              | Non-Hisp. Black Men   | 78.9    | 73.1 - 84.7 |
|                              | Non-Hisp. Black Women | 81.9    | 77.6 - 86.2 |
|                              | Hispanic Men          | 73.2    | 67.5 - 78.9 |
|                              | Hispanic Women        | 70.8    | 65.3 - 76.4 |
| <b>AGE GROUP</b>             | 18-44                 | 85.4    | 83.4 - 87.4 |
|                              | 45-64                 | 74.4    | 71.8 - 77.0 |
|                              | 65 & Older            | 75.0    | 72.6 - 77.5 |
| <b>EDUCATION LEVEL</b>       | <High School          | 58.4    | 52.9 - 63.8 |
|                              | High School / GED     | 76.3    | 73.6 - 79.0 |
|                              | >High School          | 85.4    | 84.1 - 86.8 |
| <b>ANNUAL INCOME</b>         | <\$25,000             | 65.1    | 61.8 - 68.3 |
|                              | \$25,000-\$49,999     | 79.2    | 76.3 - 82.1 |
|                              | \$50,000 or More      | 89.9    | 88.2 - 91.5 |
| <b>MARITAL STATUS</b>        | Married/Couple        | 81.8    | 80.0 - 83.6 |
|                              | Not Married/Couple    | 76.2    | 74.1 - 78.2 |

**Percentage of adults said their overall health was "fair" or "poor"**

|                              |                       | Measure | 95% CI      |
|------------------------------|-----------------------|---------|-------------|
| <b>ALL</b>                   | Overall               | 20.8    | 19.5 - 22.2 |
| <b>SEX</b>                   | Men                   | 20.7    | 18.7 - 22.7 |
|                              | Women                 | 20.9    | 19.1 - 22.8 |
| <b>RACE/ETHNICITY</b>        | Non-Hisp. White       | 18.2    | 16.9 - 19.5 |
|                              | Non-Hisp. Black       | 19.5    | 16.0 - 23.1 |
|                              | Hispanic              | 28.0    | 24.0 - 31.9 |
| <b>SEX BY RACE/ETHNICITY</b> | Non-Hisp. White Men   | 18.2    | 16.2 - 20.2 |
|                              | Non-Hisp. White Women | 18.2    | 16.5 - 19.9 |
|                              | Non-Hisp. Black Men   | 21.1    | 15.3 - 26.9 |
|                              | Non-Hisp. Black Women | 18.1    | 13.8 - 22.4 |
|                              | Hispanic Men          | 26.8    | 21.1 - 32.5 |
|                              | Hispanic Women        | 29.2    | 23.6 - 34.7 |
| <b>AGE GROUP</b>             | 18-44                 | 14.6    | 12.6 - 16.6 |
|                              | 45-64                 | 25.6    | 23.0 - 28.2 |
|                              | 65 & Older            | 25.0    | 22.5 - 27.4 |
| <b>EDUCATION LEVEL</b>       | <High School          | 41.6    | 36.2 - 47.1 |
|                              | High School / GED     | 23.7    | 21.0 - 26.4 |
|                              | >High School          | 14.6    | 13.2 - 15.9 |
| <b>ANNUAL INCOME</b>         | <\$25,000             | 34.9    | 31.7 - 38.2 |
|                              | \$25,000-\$49,999     | 20.8    | 17.9 - 23.7 |
|                              | \$50,000 or More      | 10.1    | 8.5 - 11.8  |
| <b>MARITAL STATUS</b>        | Married/Couple        | 18.2    | 16.4 - 20.0 |
|                              | Not Married/Couple    | 23.8    | 21.8 - 25.9 |

CI=Confidence Interval  
 NA=Not available due to respondent counts of less than 30.

2018 Florida BRFSS Data

**Health Status & Quality of Life**

**Percentage of adults with good physical health for the past 30 days**

|                              |                       | Measure | 95% CI      |
|------------------------------|-----------------------|---------|-------------|
| <b>ALL</b>                   | Overall               | 86.2    | 85.1 - 87.3 |
| <b>SEX</b>                   | Men                   | 86.6    | 85.0 - 88.3 |
|                              | Women                 | 85.8    | 84.4 - 87.3 |
| <b>RACE/ETHNICITY</b>        | Non-Hisp. White       | 86.1    | 84.9 - 87.2 |
|                              | Non-Hisp. Black       | 86.9    | 83.7 - 90.1 |
|                              | Hispanic              | 85.9    | 82.9 - 89.0 |
| <b>SEX BY RACE/ETHNICITY</b> | Non-Hisp. White Men   | 86.5    | 84.7 - 88.3 |
|                              | Non-Hisp. White Women | 85.7    | 84.2 - 87.1 |
|                              | Non-Hisp. Black Men   | 87.1    | 82.3 - 91.9 |
|                              | Non-Hisp. Black Women | 86.8    | 82.5 - 91.0 |
|                              | Hispanic Men          | 86.7    | 82.3 - 91.2 |
|                              | Hispanic Women        | 85.2    | 81.0 - 89.4 |
| <b>AGE GROUP</b>             | 18-44                 | 91.5    | 90.1 - 93.0 |
|                              | 45-64                 | 82.1    | 79.9 - 84.3 |
|                              | 65 & Older            | 82.4    | 80.2 - 84.6 |
| <b>EDUCATION LEVEL</b>       | <High School          | 73.3    | 68.1 - 78.4 |
|                              | High School / GED     | 85.9    | 83.9 - 87.8 |
|                              | >High School          | 89.3    | 88.2 - 90.4 |
| <b>ANNUAL INCOME</b>         | <\$25,000             | 76.4    | 73.5 - 79.2 |
|                              | \$25,000-\$49,999     | 86.3    | 83.9 - 88.7 |
|                              | \$50,000 or More      | 92.6    | 91.4 - 93.8 |
| <b>MARITAL STATUS</b>        | Married/Couple        | 88.3    | 87.0 - 89.7 |
|                              | Not Married/Couple    | 83.7    | 81.9 - 85.5 |

**Percentage of adults who had poor physical health on 14 or more of the past 30 days**

|                              |                       | Measure | 95% CI      |
|------------------------------|-----------------------|---------|-------------|
| <b>ALL</b>                   | Overall               | 13.8    | 12.7 - 14.9 |
| <b>SEX</b>                   | Men                   | 13.4    | 11.7 - 15.0 |
|                              | Women                 | 14.2    | 12.7 - 15.6 |
| <b>RACE/ETHNICITY</b>        | Non-Hisp. White       | 13.9    | 12.8 - 15.1 |
|                              | Non-Hisp. Black       | 13.1    | 9.9 - 16.3  |
|                              | Hispanic              | 14.1    | 11.0 - 17.1 |
| <b>SEX BY RACE/ETHNICITY</b> | Non-Hisp. White Men   | 13.5    | 11.7 - 15.3 |
|                              | Non-Hisp. White Women | 14.3    | 12.9 - 15.8 |
|                              | Non-Hisp. Black Men   | 12.9    | 8.1 - 17.7  |
|                              | Non-Hisp. Black Women | 13.2    | 9.0 - 17.5  |
|                              | Hispanic Men          | 13.3    | 8.8 - 17.7  |
|                              | Hispanic Women        | 14.8    | 10.6 - 19.0 |
| <b>AGE GROUP</b>             | 18-44                 | 8.5     | 7.0 - 9.9   |
|                              | 45-64                 | 17.9    | 15.7 - 20.1 |
|                              | 65 & Older            | 17.6    | 15.4 - 19.8 |
| <b>EDUCATION LEVEL</b>       | <High School          | 26.7    | 21.6 - 31.9 |
|                              | High School / GED     | 14.1    | 12.2 - 16.1 |
|                              | >High School          | 10.7    | 9.6 - 11.8  |
| <b>ANNUAL INCOME</b>         | <\$25,000             | 23.6    | 20.8 - 26.5 |
|                              | \$25,000-\$49,999     | 13.7    | 11.3 - 16.1 |
|                              | \$50,000 or More      | 7.4     | 6.2 - 8.6   |
| <b>MARITAL STATUS</b>        | Married/Couple        | 11.7    | 10.3 - 13.0 |
|                              | Not Married/Couple    | 16.3    | 14.5 - 18.1 |

CI=Confidence Interval  
 NA=Not available due to respondent counts of less than 30.

2018 Florida BRFSS Data

**Health Status & Quality of Life**

**Percentage of adults with good mental health for the past 30 days**

|                              |                       | Measure | 95% CI      |
|------------------------------|-----------------------|---------|-------------|
| <b>ALL</b>                   | Overall               | 87.2    | 86.1 - 88.2 |
| <b>SEX</b>                   | Men                   | 88.7    | 87.2 - 90.2 |
|                              | Women                 | 85.8    | 84.3 - 87.3 |
| <b>RACE/ETHNICITY</b>        | Non-Hisp. White       | 86.4    | 85.3 - 87.6 |
|                              | Non-Hisp. Black       | 88.4    | 85.3 - 91.5 |
|                              | Hispanic              | 88.7    | 86.1 - 91.4 |
| <b>SEX BY RACE/ETHNICITY</b> | Non-Hisp. White Men   | 87.8    | 86.1 - 89.5 |
|                              | Non-Hisp. White Women | 85.1    | 83.5 - 86.7 |
|                              | Non-Hisp. Black Men   | 91.1    | 87.2 - 95.1 |
|                              | Non-Hisp. Black Women | 85.9    | 81.3 - 90.5 |
|                              | Hispanic Men          | 89.9    | 86.2 - 93.6 |
|                              | Hispanic Women        | 87.6    | 83.8 - 91.4 |
| <b>AGE GROUP</b>             | 18-44                 | 84.9    | 83.0 - 86.8 |
|                              | 45-64                 | 85.0    | 83.0 - 87.0 |
|                              | 65 & Older            | 93.2    | 92.0 - 94.4 |
| <b>EDUCATION LEVEL</b>       | <High School          | 80.7    | 76.4 - 85.0 |
|                              | High School / GED     | 86.3    | 84.3 - 88.3 |
|                              | >High School          | 89.0    | 87.9 - 90.2 |
| <b>ANNUAL INCOME</b>         | <\$25,000             | 79.6    | 77.0 - 82.2 |
|                              | \$25,000-\$49,999     | 85.8    | 83.4 - 88.2 |
|                              | \$50,000 or More      | 92.3    | 91.0 - 93.6 |
| <b>MARITAL STATUS</b>        | Married/Couple        | 90.9    | 89.7 - 92.0 |
|                              | Not Married/Couple    | 82.9    | 81.1 - 84.8 |

**Percentage of adults who had poor mental health on 14 or more of the past 30 days**

|                              |                       | Measure | 95% CI      |
|------------------------------|-----------------------|---------|-------------|
| <b>ALL</b>                   | Overall               | 12.8    | 11.8 - 13.9 |
| <b>SEX</b>                   | Men                   | 11.3    | 9.8 - 12.8  |
|                              | Women                 | 14.2    | 12.7 - 15.7 |
| <b>RACE/ETHNICITY</b>        | Non-Hisp. White       | 13.6    | 12.4 - 14.7 |
|                              | Non-Hisp. Black       | 11.6    | 8.5 - 14.7  |
|                              | Hispanic              | 11.3    | 8.6 - 13.9  |
| <b>SEX BY RACE/ETHNICITY</b> | Non-Hisp. White Men   | 12.2    | 10.5 - 13.9 |
|                              | Non-Hisp. White Women | 14.9    | 13.3 - 16.5 |
|                              | Non-Hisp. Black Men   | 8.9     | 4.9 - 12.8  |
|                              | Non-Hisp. Black Women | 14.1    | 9.5 - 18.7  |
|                              | Hispanic Men          | 10.1    | 6.4 - 13.8  |
|                              | Hispanic Women        | 12.4    | 8.6 - 16.2  |
| <b>AGE GROUP</b>             | 18-44                 | 15.1    | 13.2 - 17.0 |
|                              | 45-64                 | 15.0    | 13.0 - 17.0 |
|                              | 65 & Older            | 6.8     | 5.6 - 8.0   |
| <b>EDUCATION LEVEL</b>       | <High School          | 19.3    | 15.0 - 23.6 |
|                              | High School / GED     | 13.7    | 11.7 - 15.7 |
|                              | >High School          | 11.0    | 9.8 - 12.1  |
| <b>ANNUAL INCOME</b>         | <\$25,000             | 20.4    | 17.8 - 23.0 |
|                              | \$25,000-\$49,999     | 14.2    | 11.8 - 16.6 |
|                              | \$50,000 or More      | 7.7     | 6.4 - 9.0   |
| <b>MARITAL STATUS</b>        | Married/Couple        | 9.1     | 8.0 - 10.3  |
|                              | Not Married/Couple    | 17.1    | 15.2 - 18.9 |

CI=Confidence Interval  
 NA=Not available due to respondent counts of less than 30.

2018 Florida BRFSS Data

Health Status & Quality of Life

Percentage of adults whose poor physical or mental health kept them from doing usual activities on 14 or more of the past 30 days

|                              |                       | Measure | 95% CI      |
|------------------------------|-----------------------|---------|-------------|
| <b>ALL</b>                   | Overall               | 18.3    | 16.5 - 20.0 |
| <b>SEX</b>                   | Men                   | 19.2    | 16.3 - 22.1 |
|                              | Women                 | 17.5    | 15.4 - 19.6 |
| <b>RACE/ETHNICITY</b>        | Non-Hisp. White       | 18.9    | 17.1 - 20.7 |
|                              | Non-Hisp. Black       | 15.9    | 10.9 - 21.0 |
|                              | Hispanic              | 16.1    | 11.6 - 20.7 |
| <b>SEX BY RACE/ETHNICITY</b> | Non-Hisp. White Men   | 18.2    | 15.4 - 21.0 |
|                              | Non-Hisp. White Women | 19.5    | 17.1 - 21.9 |
|                              | Non-Hisp. Black Men   | 18.1    | 9.8 - 26.4  |
|                              | Non-Hisp. Black Women | 14.3    | 8.1 - 20.5  |
|                              | Hispanic Men          | 18.2    | 10.4 - 25.9 |
|                              | Hispanic Women        | 14.7    | 9.2 - 20.1  |
| <b>AGE GROUP</b>             | 18-44                 | 13.2    | 10.4 - 16.0 |
|                              | 45-64                 | 23.0    | 19.9 - 26.2 |
|                              | 65 & Older            | 21.7    | 18.5 - 24.8 |
| <b>EDUCATION LEVEL</b>       | <High School          | 35.9    | 28.3 - 43.5 |
|                              | High School / GED     | 19.7    | 16.4 - 22.9 |
|                              | >High School          | 13.4    | 11.8 - 15.0 |
| <b>ANNUAL INCOME</b>         | <\$25,000             | 30.2    | 26.2 - 34.2 |
|                              | \$25,000-\$49,999     | 16.3    | 13.2 - 19.4 |
|                              | \$50,000 or More      | 8.6     | 6.8 - 10.5  |
| <b>MARITAL STATUS</b>        | Married/Couple        | 15.7    | 13.5 - 17.8 |
|                              | Not Married/Couple    | 20.7    | 17.9 - 23.4 |

CI=Confidence Interval

NA=Not available due to respondent counts of less than 30.

2018 Florida BRFSS Data

**Health Status & Quality of Life**

**Average number of days where poor mental or physical health interfered with activities of daily living in the past 30 days (among adults who have had at least one day of poor mental or physical health)**

|                              |                       | Measure | 95% CI     |
|------------------------------|-----------------------|---------|------------|
| <b>ALL</b>                   | Overall               | 5.6     | 5.1 - 6.0  |
| <b>SEX</b>                   | Men                   | 5.8     | 5.1 - 6.5  |
|                              | Women                 | 5.4     | 4.9 - 5.9  |
| <b>RACE/ETHNICITY</b>        | Non-Hisp. White       | 5.8     | 5.4 - 6.2  |
|                              | Non-Hisp. Black       | 5.3     | 4.0 - 6.7  |
|                              | Hispanic              | 4.4     | 3.5 - 5.4  |
| <b>SEX BY RACE/ETHNICITY</b> | Non-Hisp. White Men   | 5.7     | 5.0 - 6.4  |
|                              | Non-Hisp. White Women | 5.9     | 5.3 - 6.5  |
|                              | Non-Hisp. Black Men   | 5.6     | 3.4 - 7.8  |
|                              | Non-Hisp. Black Women | 5.1     | 3.4 - 6.8  |
|                              | Hispanic Men          | 5.0     | 3.2 - 6.7  |
|                              | Hispanic Women        | 4.1     | 3.0 - 5.1  |
| <b>AGE GROUP</b>             | 18-44                 | 4.2     | 3.5 - 4.8  |
|                              | 45-64                 | 6.9     | 6.1 - 7.7  |
|                              | 65 & Older            | 6.4     | 5.6 - 7.2  |
| <b>EDUCATION LEVEL</b>       | <High School          | 9.8     | 8.0 - 11.7 |
|                              | High School / GED     | 5.8     | 5.1 - 6.5  |
|                              | >High School          | 4.4     | 4.0 - 4.8  |
| <b>ANNUAL INCOME</b>         | <\$25,000             | 8.5     | 7.5 - 9.4  |
|                              | \$25,000-\$49,999     | 5.0     | 4.2 - 5.8  |
|                              | \$50,000 or More      | 3.5     | 3.0 - 4.0  |
| <b>MARITAL STATUS</b>        | Married/Couple        | 4.9     | 4.4 - 5.4  |
|                              | Not Married/Couple    | 6.2     | 5.6 - 6.9  |

CI=Confidence Interval  
 NA=Not available due to respondent counts of less than 30.

2018 Florida BRFSS Data

**Health Status & Quality of Life**

**Average number of unhealthy physical days in the past 30 days**

|                              |                       | Measure | 95% CI    |
|------------------------------|-----------------------|---------|-----------|
| <b>ALL</b>                   | Overall               | 4.4     | 4.1 - 4.6 |
| <b>SEX</b>                   | Men                   | 4.3     | 3.8 - 4.7 |
|                              | Women                 | 4.4     | 4.1 - 4.8 |
| <b>RACE/ETHNICITY</b>        | Non-Hisp. White       | 4.5     | 4.2 - 4.8 |
|                              | Non-Hisp. Black       | 4.3     | 3.4 - 5.1 |
|                              | Hispanic              | 4.1     | 3.4 - 4.9 |
| <b>SEX BY RACE/ETHNICITY</b> | Non-Hisp. White Men   | 4.4     | 4.0 - 4.9 |
|                              | Non-Hisp. White Women | 4.6     | 4.2 - 5.0 |
|                              | Non-Hisp. Black Men   | 4.1     | 2.8 - 5.4 |
|                              | Non-Hisp. Black Women | 4.4     | 3.3 - 5.5 |
|                              | Hispanic Men          | 4.0     | 2.9 - 5.2 |
|                              | Hispanic Women        | 4.3     | 3.3 - 5.2 |
| <b>AGE GROUP</b>             | 18-44                 | 2.8     | 2.4 - 3.1 |
|                              | 45-64                 | 5.5     | 4.9 - 6.1 |
|                              | 65 & Older            | 5.6     | 5.0 - 6.1 |
| <b>EDUCATION LEVEL</b>       | <High School          | 7.4     | 6.2 - 8.6 |
|                              | High School / GED     | 4.7     | 4.1 - 5.2 |
|                              | >High School          | 3.5     | 3.3 - 3.8 |
| <b>ANNUAL INCOME</b>         | <\$25,000             | 7.0     | 6.3 - 7.7 |
|                              | \$25,000-\$49,999     | 4.1     | 3.5 - 4.7 |
|                              | \$50,000 or More      | 2.7     | 2.4 - 3.0 |
| <b>MARITAL STATUS</b>        | Married/Couple        | 3.8     | 3.4 - 4.1 |
|                              | Not Married/Couple    | 5.1     | 4.6 - 5.5 |

**Average number of unhealthy mental days in the past 30 days**

|                              |                       | Measure | 95% CI    |
|------------------------------|-----------------------|---------|-----------|
| <b>ALL</b>                   | Overall               | 4.0     | 3.7 - 4.2 |
| <b>SEX</b>                   | Men                   | 3.5     | 3.1 - 3.9 |
|                              | Women                 | 4.4     | 4.0 - 4.8 |
| <b>RACE/ETHNICITY</b>        | Non-Hisp. White       | 4.2     | 3.9 - 4.5 |
|                              | Non-Hisp. Black       | 3.7     | 2.9 - 4.4 |
|                              | Hispanic              | 3.5     | 2.8 - 4.2 |
| <b>SEX BY RACE/ETHNICITY</b> | Non-Hisp. White Men   | 3.7     | 3.3 - 4.2 |
|                              | Non-Hisp. White Women | 4.7     | 4.3 - 5.1 |
|                              | Non-Hisp. Black Men   | 3.0     | 1.9 - 4.0 |
|                              | Non-Hisp. Black Women | 4.3     | 3.2 - 5.4 |
|                              | Hispanic Men          | 3.1     | 2.1 - 4.1 |
|                              | Hispanic Women        | 3.8     | 2.9 - 4.8 |
| <b>AGE GROUP</b>             | 18-44                 | 4.7     | 4.3 - 5.2 |
|                              | 45-64                 | 4.5     | 4.0 - 5.0 |
|                              | 65 & Older            | 2.2     | 1.9 - 2.5 |
| <b>EDUCATION LEVEL</b>       | <High School          | 5.6     | 4.5 - 6.7 |
|                              | High School / GED     | 4.1     | 3.6 - 4.6 |
|                              | >High School          | 3.6     | 3.3 - 3.9 |
| <b>ANNUAL INCOME</b>         | <\$25,000             | 5.9     | 5.2 - 6.5 |
|                              | \$25,000-\$49,999     | 4.3     | 3.7 - 4.9 |
|                              | \$50,000 or More      | 2.7     | 2.4 - 3.1 |
| <b>MARITAL STATUS</b>        | Married/Couple        | 2.9     | 2.7 - 3.2 |
|                              | Not Married/Couple    | 5.2     | 4.7 - 5.6 |

CI=Confidence Interval  
 NA=Not available due to respondent counts of less than 30.

2018 Florida BRFSS Data

Health Status & Quality of Life

Percentage of adults who sleep at least 7 hours each night

|                              |                       | Measure | 95% CI      |
|------------------------------|-----------------------|---------|-------------|
| <b>ALL</b>                   | Overall               | 63.5    | 62.0 - 65.1 |
| <b>SEX</b>                   | Men                   | 63.8    | 61.5 - 66.1 |
|                              | Women                 | 63.3    | 61.2 - 65.5 |
| <b>RACE/ETHNICITY</b>        | Non-Hisp. White       | 65.7    | 64.1 - 67.3 |
|                              | Non-Hisp. Black       | 54.1    | 49.2 - 59.0 |
|                              | Hispanic              | 64.3    | 60.1 - 68.4 |
| <b>SEX BY RACE/ETHNICITY</b> | Non-Hisp. White Men   | 64.4    | 62.0 - 66.9 |
|                              | Non-Hisp. White Women | 66.9    | 64.7 - 69.0 |
|                              | Non-Hisp. Black Men   | 54.5    | 47.1 - 62.0 |
|                              | Non-Hisp. Black Women | 53.7    | 47.4 - 60.1 |
|                              | Hispanic Men          | 67.1    | 61.4 - 72.9 |
|                              | Hispanic Women        | 61.7    | 55.7 - 67.6 |
| <b>AGE GROUP</b>             | 18-44                 | 61.0    | 58.3 - 63.7 |
|                              | 45-64                 | 59.3    | 56.5 - 62.1 |
|                              | 65 & Older            | 72.4    | 70.0 - 74.8 |
| <b>EDUCATION LEVEL</b>       | <High School          | 58.4    | 52.9 - 63.9 |
|                              | High School / GED     | 62.5    | 59.5 - 65.6 |
|                              | >High School          | 65.1    | 63.2 - 66.9 |
| <b>ANNUAL INCOME</b>         | <\$25,000             | 58.8    | 55.5 - 62.2 |
|                              | \$25,000-\$49,999     | 62.7    | 59.2 - 66.2 |
|                              | \$50,000 or More      | 66.2    | 63.8 - 68.6 |
| <b>MARITAL STATUS</b>        | Married/Couple        | 66.1    | 64.0 - 68.2 |
|                              | Not Married/Couple    | 60.3    | 58.0 - 62.7 |

CI=Confidence Interval

NA=Not available due to respondent counts of less than 30.



2018 Florida BRFSS Data

**Health Care Access & Coverage**

**Percentage of adults with any type of health care insurance coverage**

|                              |                       | Measure | 95% CI      |
|------------------------------|-----------------------|---------|-------------|
| <b>ALL</b>                   | Overall               | 84.2    | 82.9 - 85.5 |
| <b>SEX</b>                   | Men                   | 83.2    | 81.3 - 85.2 |
|                              | Women                 | 85.1    | 83.4 - 86.8 |
| <b>RACE/ETHNICITY</b>        | Non-Hisp. White       | 88.7    | 87.6 - 89.9 |
|                              | Non-Hisp. Black       | 83.6    | 79.9 - 87.4 |
|                              | Hispanic              | 74.7    | 70.9 - 78.5 |
| <b>SEX BY RACE/ETHNICITY</b> | Non-Hisp. White Men   | 88.8    | 87.1 - 90.5 |
|                              | Non-Hisp. White Women | 88.7    | 87.1 - 90.3 |
|                              | Non-Hisp. Black Men   | 81.4    | 75.4 - 87.4 |
|                              | Non-Hisp. Black Women | 85.6    | 81.0 - 90.2 |
|                              | Hispanic Men          | 71.7    | 66.1 - 77.4 |
|                              | Hispanic Women        | 77.5    | 72.5 - 82.5 |
| <b>AGE GROUP</b>             | 18-44                 | 74.5    | 72.0 - 77.1 |
|                              | 45-64                 | 85.0    | 82.9 - 87.1 |
|                              | 65 & Older            | 98.2    | 97.5 - 98.9 |
| <b>EDUCATION LEVEL</b>       | <High School          | 68.2    | 63.1 - 73.3 |
|                              | High School / GED     | 79.7    | 76.9 - 82.5 |
|                              | >High School          | 90.0    | 88.8 - 91.3 |
| <b>ANNUAL INCOME</b>         | <\$25,000             | 72.7    | 69.5 - 75.9 |
|                              | \$25,000-\$49,999     | 83.5    | 80.8 - 86.1 |
|                              | \$50,000 or More      | 93.3    | 91.8 - 94.9 |
| <b>MARITAL STATUS</b>        | Married/Couple        | 87.5    | 85.8 - 89.2 |
|                              | Not Married/Couple    | 80.4    | 78.4 - 82.4 |

**Percentage of adults who have a personal doctor**

|                              |                       | Measure | 95% CI      |
|------------------------------|-----------------------|---------|-------------|
| <b>ALL</b>                   | Overall               | 73.8    | 72.3 - 75.3 |
| <b>SEX</b>                   | Men                   | 69.8    | 67.5 - 72.0 |
|                              | Women                 | 77.5    | 75.6 - 79.4 |
| <b>RACE/ETHNICITY</b>        | Non-Hisp. White       | 77.7    | 76.2 - 79.3 |
|                              | Non-Hisp. Black       | 74.8    | 70.6 - 79.1 |
|                              | Hispanic              | 65.0    | 60.9 - 69.1 |
| <b>SEX BY RACE/ETHNICITY</b> | Non-Hisp. White Men   | 74.6    | 72.3 - 77.0 |
|                              | Non-Hisp. White Women | 80.6    | 78.7 - 82.6 |
|                              | Non-Hisp. Black Men   | 72.3    | 65.7 - 78.9 |
|                              | Non-Hisp. Black Women | 77.0    | 71.5 - 82.5 |
|                              | Hispanic Men          | 58.3    | 52.2 - 64.5 |
|                              | Hispanic Women        | 71.3    | 66.0 - 76.6 |
| <b>AGE GROUP</b>             | 18-44                 | 56.6    | 53.9 - 59.4 |
|                              | 45-64                 | 79.3    | 76.9 - 81.8 |
|                              | 65 & Older            | 93.5    | 92.1 - 95.0 |
| <b>EDUCATION LEVEL</b>       | <High School          | 65.2    | 60.0 - 70.5 |
|                              | High School / GED     | 70.5    | 67.6 - 73.5 |
|                              | >High School          | 77.4    | 75.6 - 79.1 |
| <b>ANNUAL INCOME</b>         | <\$25,000             | 67.0    | 63.8 - 70.3 |
|                              | \$25,000-\$49,999     | 70.4    | 66.9 - 73.8 |
|                              | \$50,000 or More      | 81.2    | 79.2 - 83.2 |
| <b>MARITAL STATUS</b>        | Married/Couple        | 77.7    | 75.8 - 79.7 |
|                              | Not Married/Couple    | 69.3    | 67.0 - 71.5 |

CI=Confidence Interval

NA=Not available due to respondent counts of less than 30.

2018 Florida BRFSS Data

**Health Care Access & Coverage**

**Percentage of adults who could not see a doctor in the past year due to cost**

|                              |                       | Measure | 95% CI      |
|------------------------------|-----------------------|---------|-------------|
| <b>ALL</b>                   | Overall               | 16.2    | 14.9 - 17.4 |
| <b>SEX</b>                   | Men                   | 14.8    | 12.9 - 16.6 |
|                              | Women                 | 17.5    | 15.7 - 19.3 |
| <b>RACE/ETHNICITY</b>        | Non-Hisp. White       | 13.1    | 11.9 - 14.3 |
|                              | Non-Hisp. Black       | 21.0    | 16.8 - 25.2 |
|                              | Hispanic              | 20.5    | 17.0 - 24.0 |
| <b>SEX BY RACE/ETHNICITY</b> | Non-Hisp. White Men   | 11.4    | 9.7 - 13.2  |
|                              | Non-Hisp. White Women | 14.7    | 13.1 - 16.4 |
|                              | Non-Hisp. Black Men   | 19.9    | 13.8 - 25.9 |
|                              | Non-Hisp. Black Women | 22.0    | 16.2 - 27.8 |
|                              | Hispanic Men          | 19.0    | 14.1 - 23.9 |
|                              | Hispanic Women        | 21.9    | 16.9 - 26.9 |
| <b>AGE GROUP</b>             | 18-44                 | 21.6    | 19.3 - 23.9 |
|                              | 45-64                 | 18.6    | 16.3 - 20.9 |
|                              | 65 & Older            | 5.1     | 3.7 - 6.6   |
| <b>EDUCATION LEVEL</b>       | <High School          | 26.0    | 21.1 - 30.9 |
|                              | High School / GED     | 19.3    | 16.6 - 22.0 |
|                              | >High School          | 12.4    | 11.2 - 13.7 |
| <b>ANNUAL INCOME</b>         | <\$25,000             | 27.3    | 24.3 - 30.4 |
|                              | \$25,000-\$49,999     | 16.9    | 14.2 - 19.7 |
|                              | \$50,000 or More      | 8.4     | 6.8 - 10.1  |
| <b>MARITAL STATUS</b>        | Married/Couple        | 13.7    | 12.1 - 15.4 |
|                              | Not Married/Couple    | 19.0    | 17.1 - 21.0 |

**Percentage of adults who had a medical checkup in the past year**

|                              |                       | Measure | 95% CI      |
|------------------------------|-----------------------|---------|-------------|
| <b>ALL</b>                   | Overall               | 80.4    | 79.1 - 81.7 |
| <b>SEX</b>                   | Men                   | 76.4    | 74.4 - 78.4 |
|                              | Women                 | 84.1    | 82.5 - 85.7 |
| <b>RACE/ETHNICITY</b>        | Non-Hisp. White       | 80.5    | 79.1 - 81.9 |
|                              | Non-Hisp. Black       | 86.3    | 83.2 - 89.4 |
|                              | Hispanic              | 76.9    | 73.3 - 80.4 |
| <b>SEX BY RACE/ETHNICITY</b> | Non-Hisp. White Men   | 77.8    | 75.5 - 80.0 |
|                              | Non-Hisp. White Women | 83.1    | 81.3 - 84.9 |
|                              | Non-Hisp. Black Men   | 83.0    | 78.1 - 88.0 |
|                              | Non-Hisp. Black Women | 89.2    | 85.4 - 92.9 |
|                              | Hispanic Men          | 69.3    | 63.7 - 74.9 |
|                              | Hispanic Women        | 84.0    | 79.8 - 88.2 |
| <b>AGE GROUP</b>             | 18-44                 | 69.2    | 66.7 - 71.7 |
|                              | 45-64                 | 81.6    | 79.4 - 83.9 |
|                              | 65 & Older            | 95.9    | 95.1 - 96.7 |
| <b>EDUCATION LEVEL</b>       | <High School          | 79.2    | 75.1 - 83.3 |
|                              | High School / GED     | 78.5    | 75.8 - 81.1 |
|                              | >High School          | 81.6    | 80.0 - 83.1 |
| <b>ANNUAL INCOME</b>         | <\$25,000             | 77.6    | 74.8 - 80.4 |
|                              | \$25,000-\$49,999     | 79.5    | 76.6 - 82.4 |
|                              | \$50,000 or More      | 81.0    | 78.9 - 83.0 |
| <b>MARITAL STATUS</b>        | Married/Couple        | 81.1    | 79.3 - 82.8 |
|                              | Not Married/Couple    | 79.4    | 77.5 - 81.4 |

CI=Confidence Interval

NA=Not available due to respondent counts of less than 30.

---

## GLOSSARY

---

### 2018 Florida Behavioral Risk Factor Surveillance System Data

|   |   |
|---|---|
| <b>Activities of Daily Living</b>                   | Usual activities, such as self-care, work, or recreation.   |
| <b>Adult</b>  | Individual aged 18 years or older.  |
| <b>Angina</b>                                       | Most common symptom of coronary artery disease (CAD); chest pain or discomfort that occurs if an area of the heart muscle does not get enough oxygen-rich blood.  |
| <b>Arthritis</b>                                    | Joint inflammation; term used in the public health field to describe more than 100 rheumatic diseases and conditions that affect joints, the tissues which surround the joint, and other connective tissue; pattern, severity, and location of symptoms can vary. |
| <b>Asthma</b>                                       | Disease that affects the lungs; causes repeated episodes of wheezing, breathlessness, chest tightness, and nighttime or early morning coughing.   |
| <b>Binge Drinking*</b>                              | For women, consumption of 4 or more drinks during a single occasion in the past 30 days; for men, consumption of 5 or more drinks during a single occasion in the past 30 days.   |
| <b>Blood Glucose</b>                                | Also called blood sugar; refers to the level of glucose, the main sugar the body makes from the food we eat, that is found in the bloodstream.  |
| <b>Blood Pressure</b>                               | The force of the blood against the artery walls; two levels of blood pressure measured, the highest, or systolic, occurs when the heart pumps blood into the blood vessels, and the lowest, or diastolic, occurs when the heart rests.                            |
| <b>Blood Sugar</b>                                  | See Blood Glucose   |
| <b>Body Mass Index (BMI)</b>                        | A number calculated from a person's height and weight; provides a reliable indicator of body fatness for most people; used to screen for weight categories that may lead to health problems.  |
| <b>Cancer</b>                                       | General name for a group of diseases; when cells in a part of the body begin to grow out of control, forming new, abnormal cells and sometimes invading (growing into) other tissues.   |
| <b>Cholesterol</b>                                  | A substance the body uses to produce hormones, vitamin D, and food-digesting acids. Too much cholesterol in the blood over an extended period can increase the risk of coronary heart disease, heart attack, or angina.   |
| <b>Chronic Bronchitis</b>                           | A long-term condition in which the airways that carry air to the lungs become inflamed and produce too much mucus, making it difficult to get air into and out of the lungs.  |
| <b>Chronic Diseases</b>                             | Diseases of long duration and generally slow progression (e.g., heart disease, stroke, cancer, diabetes); represent the leading causes of mortality worldwide.  |
| <b>Chronic Obstructive Pulmonary Disease (COPD)</b> | Term that refers to a group of diseases that cause airflow blockage and breathing-related problems, including emphysema and chronic bronchitis.   |
| <b>Coronary Artery Disease (CAD)</b>                | Most common type of heart disease; occurs when a substance called plaque builds up on the inner walls of the arteries that supply blood to the heart, called coronary arteries; most common cause of a heart attack.  |
| <b>Coronary Heart Disease (CHD)</b>                 | See Coronary Artery Disease (CAD)   |
| <b>Current Smoker*</b>                              | Combination of everyday smoker and some days smoker.  |
| <b>Depressive Disorders</b>                         | Mental illnesses characterized by a profound and persistent feeling of sadness or despair and/or a loss of interest in things that once were pleasurable; disturbance in sleep, appetite, and mental processes are a common accompaniment.                        |
| <b>Diabetes</b>                                     | General term for diabetes mellitus; disease in which blood glucose levels are above normal.   |

\*This term is defined using BRFSS standards.

---

## GLOSSARY

---

### 2018 Florida Behavioral Risk Factor Surveillance System Data

|                               |   |
|-------------------------------|---|
| <b>E-Cigarettes</b>           | An e-cigarette, also known as an electronic cigarette, is a device that allows a user to inhale nicotine and other vapors.  |
| <b>Emphysema</b>              | Long-term, progressive disease of the lungs that primarily causes shortness of breath; tissues necessary to support the physical shape and function of the lungs are destroyed. See also Chronic Obstructive Pulmonary Disease (COPD).                          |
| <b>Everyday Smoker*</b>       | Adults who reported smoking at least 100 cigarettes in their lifetimes and reported smoking everyday now.   |
| <b>Exercise</b>               | See Physical Activity   |
| <b>Fibromyalgia</b>           | A musculoskeletal condition causing widespread muscle and joint pain and fatigue.   |
| <b>Flu</b>                    | Contagious respiratory illness caused by influenza viruses; can cause mild to severe illness, and at times can lead to death.   |
| <b>Flu Shot</b>               | Influenza vaccine; an inactivated vaccine (containing killed virus) that is given with a needle, usually in the arm. The flu vaccine can also be administered as an attenuated vaccine (containing weakened, live virus) by a spray, mist, or drop in the nose. |
| <b>Former Smoker</b>          | Adults who reported smoking at least 100 cigarettes in their lifetimes but reported not smoking now.  |
| <b>Gout</b>                   | A form of arthritis caused by too much uric acid in the blood that causes pain, stiffness, and swelling of a joint.   |
| <b>Health Behavior</b>        | An action taken by a person to maintain, attain, or regain good health and to prevent illness.  |
| <b>Health Care Coverage</b>   | Health insurance, pre-paid plans such as HMO's, government plans such as Medicare.  |
| <b>Health Care Provider</b>   | A person who by education, training, certification, or licensure is qualified to and is engaged in providing health care to patients (e.g., medical doctor, nurse practitioner, physician assistant, registered nurse).   |
| <b>Health Risk Behavior</b>   | An action taken by a person that is associated with higher than average rates of morbidity or mortality (e.g., lack of physical activity, poor nutrition, tobacco use, excessive alcohol consumption).  |
| <b>Healthy Weight</b>         | Having a body mass index (BMI) ranging from 18.5 to 24.9; BMI is calculated using self-reported height and weight.  |
| <b>Heart Attack</b>           | Most commonly caused by coronary artery disease (CAD); occurs when a section of the heart muscle dies or gets damaged because of reduced blood supply.  |
| <b>Heavy Drinking*</b>        | For women, consumption of more than 1 drink per day on average in the past 30 days; for men, consumption of more than 2 drinks per day on average in the past 30 days.  |
| <b>High Blood Cholesterol</b> | Condition where there is too much cholesterol in the blood for an extended period of time; increases the risk of coronary heart disease, heart attack, or angina.   |
| <b>High Blood Pressure</b>    | Condition where the blood circulates through the arteries with too much force; tires the heart, harms the arteries, and increases the risk of heart attack, stroke, and kidney problems.  |
| <b>Hispanic</b>               | Adults of Cuban, Mexican, Puerto Rican, South or Central American, or other Spanish culture or origin, regardless of race; self-reported demographic variable.  |
| <b>HIV</b>                    | Human immunodeficiency virus (HIV) damages a person's body by destroying immune system cells, which are crucial to helping the body fight diseases; can lead to acquired immune deficiency syndrome (AIDS).   |

\*This term is defined using BRFSS standards.

---

## GLOSSARY

---

### 2018 Florida Behavioral Risk Factor Surveillance System Data

|   |   |
|---|---|
| <b>Hypertension</b>                         | See High Blood Pressure   |
| <b>Influenza</b>                            | See Flu   |
| <b>Kidney Disease</b>                       | Also called renal disease; general term for any damage that reduces the functioning of the kidney.  |
| <b>Lupus</b>                                | A chronic inflammatory disease resulting from an attack by the body's own immune system.  |
| <b>Mental Health</b>                        | A state of well-being in which the individual realizes his or her own abilities, can cope with the normal stresses of life, can work productively and fruitfully, and is able to make a contribution to his or her community. |
| <b>Never Smoked*</b>                        | Adults who reported smoking less than 100 cigarettes in their lifetime.   |
| <b>Non-Hispanic Black</b>                   | Adults not of Hispanic culture or origins reporting membership in only the black race category; self-reported demographic variable.   |
| <b>Non-Hispanic White</b>                   | Adults not of Hispanic culture or origins reporting membership in only the white race category; self-reported demographic variable.   |
| <b>Non-Smoker*</b>                          | Combination of former smoker and never smoked.  |
| <b>Obese</b>                                | Having a body mass index (BMI) that is greater than or equal to 30.0; BMI is calculated using self-reported height and weight.  |
| <b>Obesity</b>                              | A condition characterized by being obese.   |
| <b>Overweight</b>                           | Having a body mass index (BMI) ranging from 25.0 to 29.9; BMI is calculated using self-reported height and weight.  |
| <b>Personal Doctor</b>                      | A health care provider that an adult identifies as their personal health care provider.   |
| <b>Physical Activity</b>                    | Any bodily movement produced by the contraction of skeletal muscle that increases energy expenditure above basal level and that enhances or maintains physical fitness and overall health and wellness.                       |
| <b>Pneumococcal Vaccination</b>             | Vaccine given with a needle, usually in the arm, to prevent pneumococcal pneumonia.   |
| <b>Pneumonia</b>                            | Infection of the lungs, usually caused by bacteria or viruses, that can cause mild to severe illness.   |
| <b>Poor Mental Health</b>                   | Adults who report that their mental health, which includes stress, depression, and problems with emotions, was not good on 14 or more of the previous 30 days.  |
| <b>Poor Physical Health</b>                 | Adults who report that their physical health, which includes physical illness and injury, was not good on 14 or more of the previous 30 days.   |
| <b>Pre-Diabetes</b>                         | A condition in which an individual's blood sugar is high, but not high enough to be diagnosed as diabetes.  |
| <b>Prostate-Specific Antigen Test (PSA)</b> | Test used primarily to screen for prostate cancer that measures the amount of prostate-specific antigen (PSA) present in blood.   |
| <b>Race/Ethnicity</b>                       | A measure that combines an adult's ethnicity status (Hispanic/non-Hispanic) and race status (e.g., white; black; other); self-reported demographic variable.  |
| <b>Routine Checkup</b>                      | A general physical exam; does not include exams conducted for a specific injury, illness, or condition.   |
| <b>Sedentary*</b>                           | Participating in no leisure-time physical activity in the past 30 days.   |
| <b>Sex</b>                                  | The condition or character of being male or female; self-reported demographic variable.   |
| <b>Smoking</b>                              | Inhalation of the smoke (gases and hydrocarbon vapors) generated by slowly burning tobacco.   |

\*This term is defined using BRFSS standards.

---

## GLOSSARY

---

### 2018 Florida Behavioral Risk Factor Surveillance System Data

**Some Days Smoking\***

Adults who reported smoking at least 100 cigarettes in their lifetime and reported smoking some days now.

**Stroke**

Sometimes called a brain attack; occurs when a clot blocks the blood supply to the brain or when a blood vessel in the brain bursts.

\*This term is defined using BRFSS standards.

## 2018 Florida Behavioral Risk Factor Surveillance System Data

### Healthy People 2020 Objectives

#### Alcohol Consumption

SA-14. Reduce the proportion of persons engaging in binge drinking of alcoholic beverages

SA-15. Reduce the proportion of adults who drank excessively in the previous 30 days

#### Arthritis

AOCBD-2. Reduce the proportion of adults with doctor-diagnosed arthritis who experience a limitation in activity due to arthritis or joint symptoms

#### Cardiovascular Disease

HDS-1. (Developmental) Increase overall cardiovascular health in the U.S. population

#### Cholesterol Awareness

HDS-7. Reduce the proportion of adults with high total blood cholesterol levels

#### Diabetes

D-9. Increase the proportion of adults with diabetes who have at least an annual foot examination

D-10. Increase the proportion of adults with diabetes who have an annual dilated eye examination

D-11. Increase the proportion of adults with diabetes who have a glycosylated hemoglobin (A1C) measurement at least twice a year

D-13. Increase the proportion of adults with diabetes who perform self-blood glucose-monitoring at least once daily

D-14. Increase the proportion of persons with diagnosed diabetes who receive formal diabetes education

#### Health Care Access & Coverage

AHS-1. Increase the proportion of persons with medical insurance

AHS-3. Increase the proportion of persons with a usual primary care provider

AHS-6.2. Reduce the proportion of individuals who are unable to obtain or delay in obtaining necessary medical care

#### Health Status & Quality of Life

HRQOL/WB-1.1. Increase the proportion of adults who self-report good or better physical health

HRQOL/WB-1.2. Increase the proportion of adults who self-report good or better mental health

#### HIV/AIDS Screening

HIV-14.1. Increase the proportion of adolescents and adults who have ever been tested for HIV

#### Hypertension Awareness & Control

HDS-5.1. Reduce the proportion of adults with hypertension

## 2018 Florida Behavioral Risk Factor Surveillance System Data

### Healthy People 2020 Objectives

#### Immunization

IID-12.7. Increase the percentage of noninstitutionalized adults aged 65 years and older who are vaccinated annually against seasonal influenza

IID-12.12. Increase the percentage of children and adults who are vaccinated annually against seasonal influenza

IID-13. Increase the percentage of adults who are vaccinated against pneumococcal disease

IID-13.1. Increase the percentage of noninstitutionalized adults aged 65 years and older who are vaccinated against pneumococcal disease

#### Injury Prevention

IVP-15. Increase use of safety belts

#### Kidney Disease

CKD-1. Reduce the proportion of the U.S. population with chronic kidney disease

#### Overweight & Obesity

NWS-8. Increase the proportion of adults who are at a healthy weight

NWS-9. Reduce the proportion of adults who are obese

#### Physical Activity & Nutrition

PA-1. Reduce the proportion of adults who engage in no leisure-time physical activity

NWS-14. Increase the contribution of fruits to the diets of the population aged 2 years and older

NWS-15. Increase the variety and contribution of vegetables to the diets of the population aged 2 years and older

PA-2.1. Increase the proportion of adults who engage in aerobic physical activity of at least moderate intensity for at least 150 minutes/week, or 75 minutes/week of vigorous intensity, or an equivalent combination

PA-2.3. Increase the proportion of adults who perform muscle-strengthening activities on 2 or more days of the week

#### Tobacco Use & Exposure

TU-1.1. Reduce cigarette smoking by adults

TU-4. Increase smoking cessation attempts by adult smokers

#### Vision Impairment

V-5. Reduce visual impairment

***The Healthy People 2020 objectives listed in this appendix are directly or indirectly related to the data presented.***





Prepared by:

Justine Gunderson, PhD  
Arju Gaggar, MPH  
Leah L. Atwell, MPH

If you have any questions or comments  
please contact:

Florida Department of Health  
Division of Community Health Promotion  
Public Health Research  
4052 Bald Cypress Way, Bin A-24  
Tallahassee, Florida 32399-1744

Phone: 850-245-4793 or 866-779-6122  
BRFSS@flhealth.gov  
[www.floridahealth.gov/BRFSS](http://www.floridahealth.gov/BRFSS)