

We're Making A Difference In The Lives Of Others!

Manatee County Health Department, Florida Breast and Cervical Cancer Screening Program (FBCCP), has been providing valuable services to the women of Manatee, DeSoto, Sarasota, Lee, Collier, Charlotte, Glades and Hendry Counties. Jan Chulock and Kathy Beckwith are RN case managers for the Florida Breast and Cervical Cancer Screening Program and the program is supervised by Donna Keith.

To be eligible for the Florida Breast and Cervical Cancer Screening Program the following conditions need to be met:

Women age 50+

- ◆ Low-Income within 200% of poverty level (see chart)
- ◆ Does not have Medicaid or Medicare
- ◆ Does not have insurance or underinsured

The Florida Breast and Cervical Cancer Program provide women with a free examination from a qualified MD or ARNP. A breast exam, pelvic and pap smear is free of charge to all women who qualify. After the exam, the women are referred to an outside agency such as Manatee Diagnostic Center or Blake Outpatient Radiology for a screening or diagnostic mammogram. We also provide free osteoporosis screenings for those who qualify for FBCCP. Our clients are educated about breast and cervical health and the importance of their annual exams.

Those women on the program who are diagnosed with breast or cervical cancer are eligible to receive Medicaid and this is usually obtained within 5 working days.

If you think you may qualify for the FBCCP program, please call us for an appointment at 748-0747 extension 1333, 1461, or 1320. We can also refer you to a local provider if you live outside Manatee County.

To be eligible for the **Susan G. Komen Program** the following conditions need to be met:

- ◆ Women ages 40-49
- ◆ Low-Income within 200% of poverty level (see chart)

Meet Manatee County Health Department's Breast and Cervical Cancer Team Komen Program

Cheryl Little is an LPN who has been recruiting women for the mammography voucher program which is funded by a grant from the Susan G. Komen Foundation. When a woman arrives with her prescription for a screening mammogram, Cheryl does breast health education, provides a referral to Manatee Diagnostic Center or Blake Outpatient Radiology and contacts the woman after her appointment to assess the outcome and the possible need for further referrals within the community. Jan Chulock and Kathy Beckwith are case managers for the Florida Breast and Cervical Cancer Screening Program. Low income women are educated about breast health and the importance of their pap and pelvic examination. They are referred for their screening mammogram to Manatee Diagnostic Center. Diagnostics, when necessary, are done at Manatee Memorial Hospital or MDC. Those women on the program who are diagnosed with breast or cervical cancer are eligible to receive Medicaid and this is obtained within 5 working days. Women on both programs are tracked so that in subsequent years, if their circumstances do not change, they are invited to return to the programs. Gayle Jones is the clerical support for both of these programs and will gladly make an appointment for you. If you think you may qualify for the Komen Program, please call us for an appointment at 748-0747 extension 1329 or 1333.

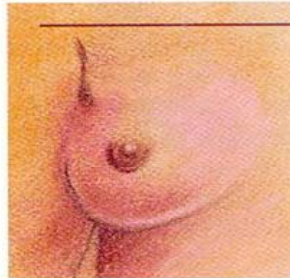


From left to right: Kathy Beckwith, Gayle Jones, Cheryl Little, Jan Chulock

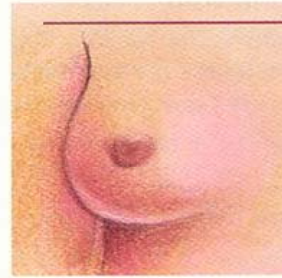
Early Detection Saves Lives!

CHANGES THAT NEED ATTENTION

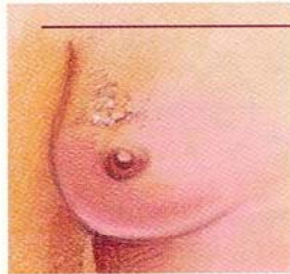
Consult your healthcare professional if you find any of the following during your monthly breast self-exam:



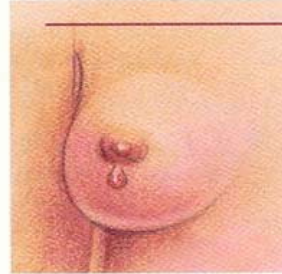
Distinct single lumps that are either hard or soft.



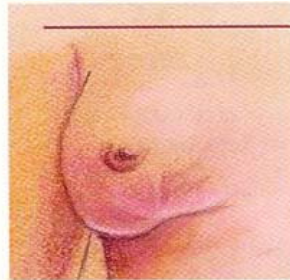
Changes in breast shape such as dimpling (depression), bulges, or flattening.



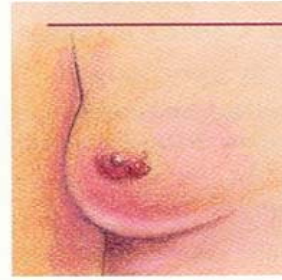
Changes in skin texture or color, including redness, "orange peel" (pebbly) skin, thickening, roughness, or puckering.



Bloody or cloudy nipple discharge.



Changes in nipple location or shape.



Breast sores that don't heal.

Breast Care Screening Schedule*

Age 20–39:

- Clinical breast examination by a healthcare professional every three years
- Monthly breast self-examination

Age 40+:

- Annual mammography
- Annual clinical breast examination by a healthcare professional (this exam should be done close to the time of the mammogram)
- Monthly breast self-examination

*From the American Cancer Society

Note: Your doctor may recommend changes to this standard schedule based on your personal and family history.

The Third Friday in OCTOBER is National Mammography Day

The third Friday in October each year is National Mammography day, first proclaimed by President Clinton in 1993. On this day, or throughout the month, radiologists provide discounted or free screening mammograms (In 2002, more than 680 American College of Radiology (ACR) accredited facilities took part). To learn which facilities in your area are taking part in the event, call:

American Cancer Society

(800) 227-2345

National Alliance of Breast Cancer Organizations (NABCO)

(888) 80-NABCO

Y-ME National Breast Cancer Organization

(800) 221-2141