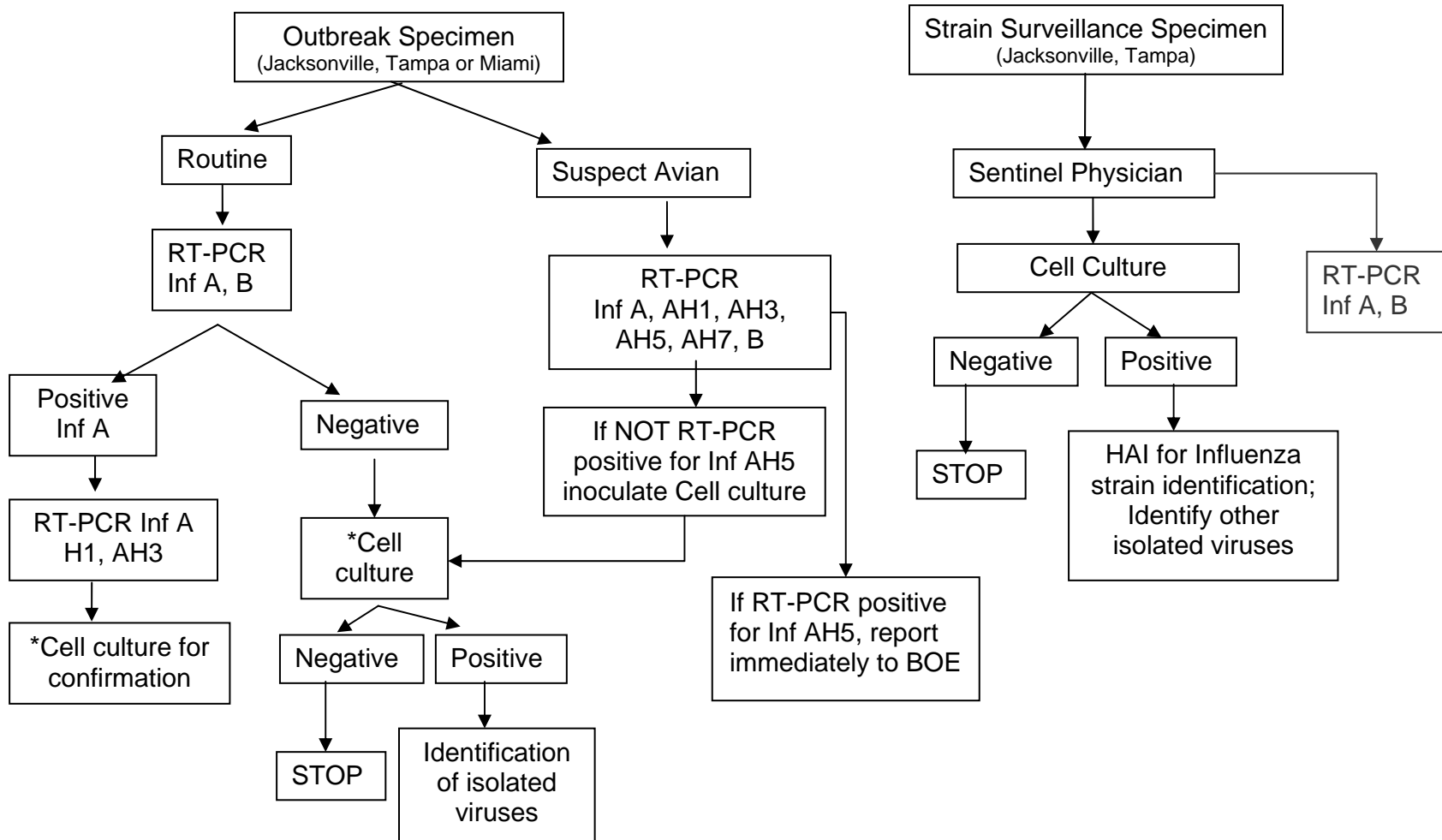




Bureau of Laboratory Influenza Test Algorithm Florida Department of Health

For consultation on possible human cases of avian influenza
contact your county health department



*Miami Bureau of Laboratory will send specimens to the Tampa Virology Laboratory for cell culture after PCR assays.



**Bureau of Laboratory Influenza Test Reporting
Florida Department of Health**

A. Outbreak samples, Routine

1. Test 17.7, RT-PCR screening assay for Influenza A virus and for Influenza B virus. Report:
 - a. Influenza A not detected, Influenza B not detected
 - b. Influenza A detected, Influenza B not detected
 - c. Influenza A not detected, Influenza B detected
2. Test 17.7 supplemental: if strain typing is specifically indicated necessary and Influenza A is detected in the screening assay. Report:
 - a. Influenza A H1 detected
 - b. Influenza A H3 detected
3. Test 16.2, Respiratory virus isolation in cell culture. Report:
 - a. No virus isolated
 - b. Influenza A H3N2-like isolated
 - c. Influenza A H1N1-like isolated
 - d. Influenza B Shanghai-like isolated
 - e. Influenza B Hong Kong-like isolated
 - f. Adenovirus isolated
 - g. Parainfluenzavirus 1 isolated
 - h. Parainfluenzavirus 2 isolated
 - i. Parainfluenzavirus 3 isolated
 - j. RSV isolated
 - k. Enterovirus (type specified) isolated
 - l. Herpesvirus isolated

B. Exotic Influenza (avian flu) Suspect

1. Test 17.7, RT-PCR screening assay for Influenza A virus strains and for Influenza B virus. Report:
 - a. Influenza A not detected, Influenza B not detected
 - b. Influenza A detected, Influenza B not detected
 - c. Influenza A not detected, Influenza B detected
 - d. Influenza A H1 detected
 - e. Influenza A H3 detected
 - f. Influenza A H5 (high pathogenicity) detected
 - g. Influenza A H7 detected
2. Test 16.2, If NOT Influenza A H5, Respiratory virus isolation in cell culture. Report:
 - a. No virus isolated
 - b. Influenza A H3N2-like isolated
 - c. Influenza A H1N1-like isolated
 - d. Influenza B Shanghai-like isolated
 - e. Influenza B Hong Kong-like isolated
 - f. Adenovirus isolated
 - g. Parainfluenzavirus 1 isolated
 - h. Parainfluenzavirus 2 isolated
 - i. Parainfluenzavirus 3 isolated
 - j. RSV isolated
 - k. Enterovirus (type specified) isolated
 - l. Herpesvirus isolated

- B. Strain Surveillance** (Sentinel submitters); Influenza isolates are summarized weekly in report to CDC. Molecular assays not priority per CDC funding.
1. Test 16.1, Influenza virus isolation in cell culture. Report:
 - a. No virus isolated
 - b. Influenza A H3N2-like isolated
 - c. Influenza A H1N1-like isolated
 - d. Influenza B Shanghai-like isolated
 - e. Influenza B Hong Kong-like isolated
 - f. Adenovirus isolated
 - g. Parainfluenzavirus 1 isolated
 - h. Parainfluenzavirus 2 isolated
 - i. Parainfluenzavirus 3 isolated
 - j. RSV isolated
 - k. Enterovirus (type specified) isolated
 - l. Herpesvirus isolated
 2. Test 17.7, RT-PCR screening assay for Influenza A virus and for Influenza B virus. Report:
 - a. Influenza A not detected, Influenza B not detected
 - b. Influenza A detected, Influenza B not detected
 - c. Influenza A not detected, Influenza B detected