

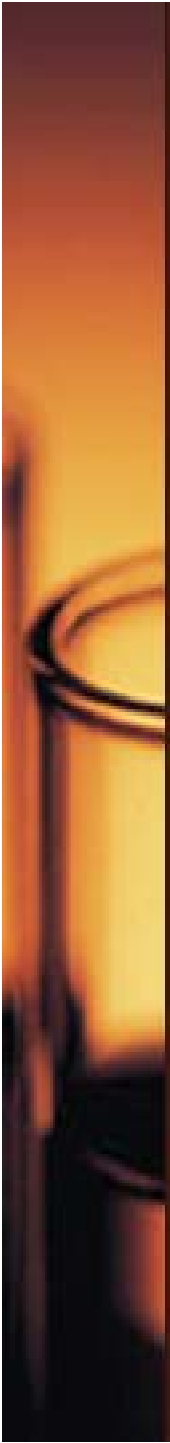
Manatee County Health Dept

Management of Biomedical Waste

Code Review Training



Provided by: **Manatee County Health Department**
Environmental Health Services
Biomedical Waste Program



This training will provide you and your staff part one of the required Initial and/or Annual Biomedical Waste Training

“Code Review” is an overview of 64E-16 Florida Administrative Code (FAC) Biomedical Waste



Today we are covering:

- Definition and Identification of Biomedical Waste
- Records and Training
- Segregation
- Storage
- Labeling
- Transport
- Procedure for Decontaminating Biomedical Waste Spills
- Contingency Plan for Emergency Transport
- Procedure for Containment

Who regulates Biomedical Waste in FL?

Florida Statute (FS) 381.0098 gives the **Department of Health** the regulatory authority over the proper management of biomedical waste.





*Who regulates
Biomedical Waste in FL?*

Florida Administrative Code (FAC) 64E-16 provides the specific requirements regarding the proper *storage, disposal, transport* and *treatment* of biomedical waste.



Biomedical Waste: an Environmental Health Program

The objective of the biomedical waste program is to protect health care workers, environmental-service staff, waste haulers, and the general public from risks associated with potentially infectious biomedical waste.

How do we do that?

The Environmental Health Division permits and inspects biomedical waste facilities to ensure that this waste is disposed of properly.

Who do we regulate?

- **Generators**
- **Transporters**
- **Storage Facilities**
- **Treatment Facilities (except incineration)**



Generators:

Places or persons that generate biomedical waste in the course of routine business.

Examples:

- Hospitals
- Clinics
- Dentists
- Tattooists
- Acupuncturists
- Veterinarians
- Doctors Offices
- Nursing Homes/Assisted Livings
- And, more!



Storage Facilities:

Businesses that store packaged biomedical waste for longer than 3 days, at a generator, or in a transport vehicle, or in an interim facility prior to pick-up by a transporter.



Transporters:

Businesses that are registered with the state to transport Biomedical Waste from generators or storage facilities to the final treatment facility.



Treatment Facilities:

- Any process, including steam, chemicals, microwave shredding, or incineration, which changes the character or composition of biomedical waste to render it noninfectious by disinfection or sterilization.



Autoclave

Who is at risk?



- Health Care Community
- Sanitation Workers



- Housekeeping Staff
- General Public



How is the general public at risk??



When biomedical waste is dumped in the street!!!

What is Biomedical Waste?

- Any solid or liquid waste which may present a threat of infection to humans, including:
 - non-liquid tissue, *blood, bloodproducts,* and body parts from humans and other primates;
 - lab and veterinary wastes which contain human disease-causing agents;
 - discarded sharps.

INCLUDES:



- Used, absorbent materials ***saturated with blood***, blood products, body fluids, or excretions or secretions contaminated with visible blood, and absorbent materials saturated with blood or blood products that have dried.
- Non-absorbent, disposable devices that have been ***contaminated with blood***, body fluids or secretions or excretions visibly contaminated with blood, but have not been treated by an approved method.

Applies to Human or Primate!

- Tissue and body parts
- Blood and blood products
 - plasma
 - serum
 - cells & platelets
 - whole blood



Which Body Fluids are Biomedical Waste?

Those that have the potential to harbor bloodborne pathogens:

- semen
- vaginal
- lymph
- peritoneal
- synovial
- pericardial
- amniotic
- pleural
- cerebrospinal



Are all secretions and excretions Biomedical Waste?

Can be if visibly contaminated *with blood*:

- urine
- feces
- sweat
- vomitus
- saliva
- tears
- nasal discharges

Discarded Sharps

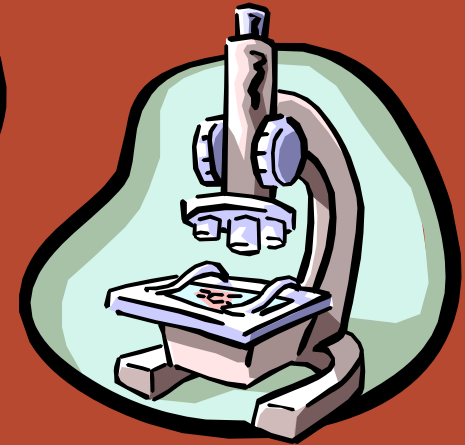
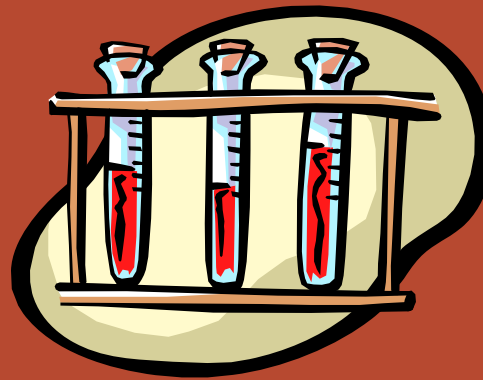
This is biomedical waste which can puncture, lacerate or break the skin:

- Needles
- Syringes with needle attached
- Scalpels
- Contaminated broken glass
- Contaminated broken hard plastic



Some Laboratory Waste is Biomedical Waste

- Specimens
- Cultures
- Vaccines
- Biologicals
- Recombinants



Also, Veterinary Waste

- Needles and needles with syringes attached
- Animals with zoonotic disease



NOT APPLICABLE

64E-16 FAC does NOT apply to:

- *Linen* that is to be laundered and reused;
- *Dead human bodies* that are disposed of by a person licensed under the provisions of Chapter 470, Florida Statutes;
- Transport of bodies, parts of bodies, or tissue specimens for *lawful examination*, investigation or autopsy;
- *Testing or research* specimens.

COMIXING

- All biomedical waste which is mixed with hazardous waste shall be managed as hazardous waste.
- All biomedical waste which is mixed with radioactive waste shall be managed as radioactive waste.
- All solid waste, other than hazardous and radioactive, which is mixed with biomedical waste shall be managed as *biomedical waste*.



What about people that generate biomedical waste at home?

Home users who administer their own injections should segregate and package their sharps in a manner that reduces the chance of exposure to the public.

See our website: [Manatee CHD](#)

Options:

- Local sharps exchange program
- U.S. Postal Service approved mail-in sharps program
- Other approved method by the Department₂₄

Application & Permitting:

All new biomedical waste facilities must file an application.

- All new facilities must file application within 30 days of opening.
- Permit is \$85.00 annually
- Facilities are inspected by the Environmental Health Division prior to the issuance of the Annual Permit.
- At the inspection, we will review your written biomedical waste management plan!

What is a Biomedical Waste Management Plan?

A site specific written plan to manage biomedical waste is required at all facilities. Plan must include:

- Description of training for personnel;
- Procedures for segregating, labeling, packaging, transporting, storing, and treating biomedical waste;
- Procedure for decontaminating biomedical waste spills
- Contingency plan for emergencies

Records:

All biomedical waste transport and disposal records shall be maintained for a 3 year period and shall be available for review by the Department at time of inspection. These records are to include:

- **Contracts with any and all transport companies;**
- **Manifests/Receipts from transport companies;**
- **Weight logs if the generator is transporting the waste.**

Training:

The written management plan must include a description of the biomedical waste training provided.

That training outline must include a review of the Biomedical Waste Code and a review of the site specific management plan.

Training records for all new employees and annual training records thereafter are also required to be maintained for 3 years.

Records:

All biomedical waste transport and disposal records shall be maintained for a 3 year period and shall be available for review by the Department at time of inspection. These records are to include:

- **Contracts with any and all transport companies;**
- **Manifests/Receipts from transport companies;**
- **Weight logs if the generator is transporting the waste.**

Storage and Labeling:

- Biomedical Waste cannot be stored at a generator facility for more than **30 DAYS!**
- The clock starts the first time non-sharp biomedical waste is placed into a red bag or a sharps container;
- Or, when a sharps container, containing **ONLY** sharps (or other non-biomedical waste), is sealed.





Storage & Labeling:

- Filled containers and bags are to be secured at the point of origin and can be placed into larger transport containers for pick up by a contracted biomedical waste transporter.
- All biomedical waste containers are to be *labeled with your name and address.*

Storage:

Indoor storage areas shall have restricted access and be designated in the written operating plan.

They shall be located away from pedestrian traffic, be vermin and insect free, and shall be maintained in a sanitary condition.

They shall be constructed of smooth, easily cleanable materials that are impervious to liquids.



Storage:

Outdoor storage areas, including containers and trailers, shall, in addition to the indoor criteria, be conspicuously marked with the international biological hazard symbol as described in paragraph 64E-16.004(2)(b), F.A.C.

Symbol shall be a minimum of six inches in diameter.

Area to be secured against vandalism and unauthorized entry.

Storage and Labeling:

RED BAGS:

- Red bags must comply with requirements covered in the code. There is a list online of approved red bags.
- Red bag information must be kept on file.

Storage and Labeling:

RED BAG Standards:

- Impact resistance of 165 grams ASTM D-1709-91
- Tear resistance of 480 grams ASTM D-1922-89
- Heavy metal concentration of less than 100 ppm



Storage and Labeling:



RED BAG Labeling:

- **Must have international biological hazard symbol**
 - - 6” diameter for bags 14” x 19” or larger
 - - 1” diameter for bags smaller than 14” x19”
- **AND, one of the following phrases:**
 - “BIOMEDICAL WASTE”,
 - “BIOHAZARDOUS WASTE”,
 - “BIOHAZARD”, “INFECTIOUS WASTE”
 - or “INFECTIOUS SUBSTANCE”

Storage and Labeling:

SHARPS CONTAINERS:

- Puncture resistant (*not* puncture proof)
- Identified with the international biological hazard symbol - 1" diameter or larger
- Has BMW Phrase



Transport:

- **Defined as “the movement of biomedical waste away from a facility”.**
 - **Packaged biomedical waste must be transported off site by a registered transporter; or, if generator has more than one location, by a designated employee.**
 - **Transport boxes are to be labeled with the transporter’s information.**

Transport:

- **Transport method must be outlined in your management plan and approved by the county health department.**
- **List of registered transporters are also available online.**
- **NOTE: Transport logs or manifests must be maintained at the facility.**

Decontaminating Biomedical Waste Spills



All surfaces contaminated with spilled or leaked biomedical waste shall be decontaminated as part of the cleaning process.

Spills:

- How your facility will clean and decontaminate accidental spills is required to be outlined in your written plan.
- You can use the tools provided on our webpage to make your own spill kit and write your own directions; or,
- You can purchase one of MANY, MANY pre-packaged spill kits with written instructions.

NOTE: Make sure your spill kit indicates cleaning of Bloodborne Pathogens.



Contingency Plan:

- Your written plan must include an alternative transporter in the event that your contracted transporter cannot follow through with original agreement. This is your contingency plan.

*Now review your written
operating plan with your
staff! That is part two of
the required training!*

The End

January 2010