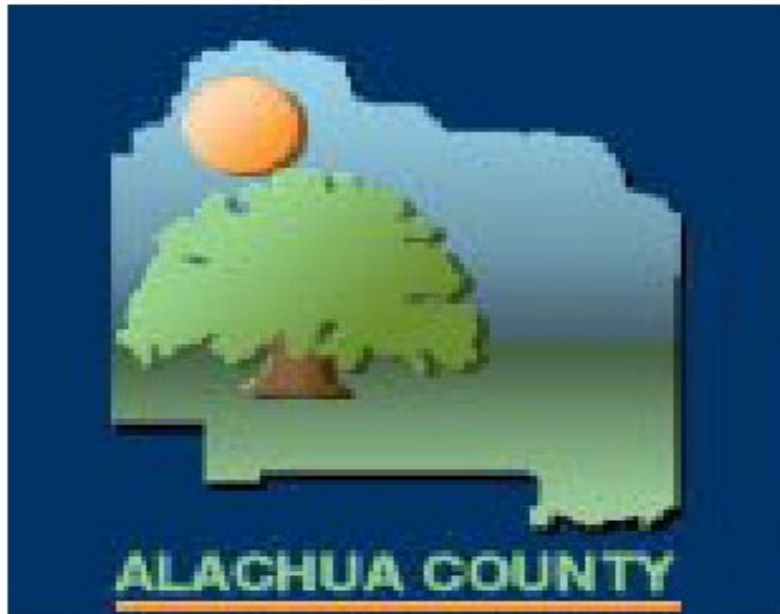




Charlie Crist  
Governor

Ana M. Viamonte Ros, M.D., M.P.H.  
State Surgeon General

# Disease Control Unit 2008-Year End Report



## TABLE OF CONTENTS

Introduction.....	3
Diseases/Conditions Designated as Reportable by the State of Florida.....	4
Summary of Alachua County Activity – 2008.....	5
Alachua County and Florida State Hepatitis Disease Incidence Report for 2008.....	6
Alachua County and Florida State vaccine Preventable Disease Incidence Report for 2008.....	7
Alachua County and Florida State Enteric Disease Incidence Report for 2008.....	8
Alachua County and Florida State All Disease Incidence Report for 2008.....	9-13
Ten Year Trend of Reportable Diseases - Alachua County, 1999 – 2008.....	14-16
Disease Frequency by Gender group - Alachua County, 2008.....	17
Disease Frequency by Age Group – Alachua County,,2008.....	18
Disease Trends and Seasonality Data Tables	
Disease Frequency of Campylobacteriosis in Alachua County, 2008.....	19
Disease Frequency of Cryptosporidiosis in Alachua County, 2008 .....	20
Disease Frequency of Giardia in Alachua County,2008 .....	21
Disease Frequency of Salmonellosis in Alachua County, 2008 .....	22
Summary of Rabies Surveillance 2008.....	23
2008 Summary of Bite Reports/Animals Tested in Alachua County.....	24
TB Data .....	25
STD Data .....	26
Syphilis, Chlamydia & Gonorrhea for Alachua County, 2008	
Age Group, Race/Ethnicity & Sex.....	27
HIV and AIDS morbidity, same period comparison, Alachua County.....	28
Pneumonia and Influenza Data.....	29
Outbreaks Investigated by the Alachua County Epidemiology Department 2008.....	
Norovirus outbreak at an independent living care facility.....	31
Norovirus Outbreak at an assisted living/memory care facility.....	32
Norovirus Outbreak at Clare Bridge Gainesville.....	33
Varicella Outbreak.....	34

## Introduction

The Alachua County Health Department, Disease Control Unit is proud to present its fourth annual report of disease surveillance and frequency measures. This report reviews morbidity data reported by laboratories and health care practitioners during calendar year 2008. The disease surveillance data is retrieved from the state databases "Merlin", "Prism", "Charts", "HMS" and "TIMS". Merlin is capable of generating disease frequencies and Epi curves by each individual county for the state of Florida. Prism houses the data for sexually transmitted diseases. The use of Prism was initiated in early 2007. HMS and TIMS houses the data for tuberculosis. Charts is a Department of Health system that has health information by county available on the internet.

Surveillance of reportable diseases requires data collection, tabulation, and assessment, as well as the dissemination of the resulting information. The dissemination of these data provides the framework for public health and the activities that are involved therein. In addition, this diffusion of information helps in the reduction and control of communicable diseases. Compared to 2007 the notable increases of reported diseases and conditions for 2008 are Varicella (57) now a vaccine preventable disease, Campylobacteriosis (30). There were notable decreases in reported cases of animal rabies (3), shigellosis (1) and Giardiasis (14). Salmonellosis continued to be high at 84.

In order for surveillance to occur, diseases must first be reported to the local county health department for case and/or outbreak investigations to be carried out. This reporting is done via individuals, physicians, personnel in medical care facilities, laboratories, and other health care providers. With the cooperation of both the health department and the medical community an enhanced infrastructure of knowledge is then promulgated. This annual report for Alachua County summarizes the disease surveillance and frequency for 2008. Appreciation goes to Dr. Reia Jaber, M.B.Ch.B. MPH, for volunteering many hours of her time in development of this report.

# Diseases/Conditions Designated as Reportable by the State of Florida

## Reportable Diseases/Conditions in Florida Practitioner\* Guide 12/06 HEALTH

Did you know that you are required by Florida statute\*\* to report certain diseases to your local public health department?

\* Reporting requirements for laboratories differ. For specific information on disease reporting, consult Rule 64D-3.

Any disease outbreak (in a community, hospital or other institution or a foodborne or waterborne outbreak)	Legionellosis
Any grouping or clustering (patients having similar disease, symptoms or syndromes that may indicate the presence of a disease outbreak including those of biological agents associated with terrorism)	Listeriosis
Acquired Immune Deficiency Syndrome (AIDS) +	Lyme disease
Botulism (foodborne, wound, unspiced, other)	Lymphogranuloma venereum (LGV)
Brucellosis	Malaria
California serogroup virus (neuroinvasive and non-neuroinvasive disease)	Meningitis (bacterial, cryptococcal, mycotic)
Campylobacteriosis	Meningitis (viral) (includes meningitis and meningococcal)
Cancer (except non-melanoma skin cancer, and including benign and borderline intracranial and CNS tumors) +	Mercury poisoning
Chancroid	Mumps
Chlamydia	Neurotoxic shellfish poisoning
Ciguatera fish poisoning (Ciguatera)	Pertussis
Clostridium perfringens, epsilon toxin (disease due to)	Pesticide-related illness and injury
Conjunctivitis	Plague
Cryptosporidiosis (in neonates < 14 days old)	Poliovirus
Cryptosporidiosis	Psittacosis (Ornithosis)
Cyclosporiasis	Rabies (human, animal)
Dengue	Ricin toxic by
Diphtheria	Rocky Mountain spotted fever
Eosinophilic esophagitis virus disease (neuroinvasive and non-neuroinvasive)	Rubella (including congenital)
Ehrlichiosis (human granulocytic (HGE), human monocytic (HME), human or other or unspecified agent)	St. Louis encephalitis (SLE) virus disease (neuroinvasive and non-neuroinvasive)
Enteric disease due to: Escherichia coli, O157:H7 Escherichia coli, Other (known serotype)	Salmonellosis
Glanders	Saxitoxin poisoning (including Paralytic shellfish poisoning) (PSP)
Gonorrhea	Severe Acute Respiratory Syndrome-associated Coronavirus (SARS-CoV) disease
Granuloma inguinale	Shigellosis
Hansen's disease (Leprosy)	Shigella (with enterocolitis or enterocolitis to venocolitis, VISA, VIBSA)
Hemolytic uremic syndrome	Streptococcal disease (invasive, Group A)
Hepatitis A	Streptococcus pneumoniae (invasive disease)
Hepatitis B, C, D, E, and G	Syphilis (in pregnant women and neonates)
Hepatitis B surface antigen (HBsAg) (positive in a pregnant woman or a child up to 24 months old)	Tetanus
Herpes simplex virus (HSV) (in infants up to six (6) months of age)	Tetanus (Tetanus)
Herpes simplex virus (HSV) (in children > 6 months of age)	Tuberculosis (Tuberculosis)
Herpes zoster (shingles) (in children < 12 yrs)	Tuberculosis (Tuberculosis)
Human immunodeficiency virus (HIV) (all, and including neonates born to an infected woman, exposed newborn) +	Typhoid fever
Human papilloma virus (HPV) (associated laryngeal papillomas or recurrent respiratory papillomatosis in children < 6 years of age; orogenital in children < 12 yrs; cancer associated strains)	Typhus fever (epidemic)
Influenza due to novel or pandemic strains	Typhus fever (endemic)
Influenza-associated pediatric mortality	Varicella (Chickenpox)
Lead poisoning	Varicella equine encephalitis virus disease (neuroinvasive and non-neuroinvasive)
	Vibriosis (Vibrio infections)
	Viral hemorrhagic fevers (Ebola, Marburg, Lassa, Machupo)
	West Nile virus disease (neuroinvasive and non-neuroinvasive)
	Western equine encephalitis virus disease (neuroinvasive and non-neuroinvasive)
	Yellow fever

■ - Report immediately upon initial suspicion or laboratory test result, 24/7 by phone.  
■ - Report immediately upon diagnosis or test result, 24/7 by phone.  
■ - Other reporting timeframe. Report next business day.

You are an invaluable part of Florida's disease surveillance system. For more information, please call the epidemiology unit at your local county health department or the Bureau of Epidemiology, Florida Department of Health, 850-245-4401 [http://www.flh.state.fl.us/disease\\_surveillance/epi/index.html](http://www.flh.state.fl.us/disease_surveillance/epi/index.html)

\*\*Section 380.06(2), Florida Statutes provides that "Any practitioner, licensed in Florida to practice medicine, osteopathy, podiatry, chiropractic, naturopathy, or veterinary medicine, who diagnoses or suspects the existence of a disease of public health importance shall immediately report the fact to the Department of Health or the local health department or health district in the county in which the patient resides." Additionally, the Department of Health is the lead agency for the reporting of all reportable diseases as the health department or health district may not be notified by the practitioner.

# Summary of Alachua County Activity - 2008

An annual report has been produced each year since 2004 for the Epidemiology program. The Disease Control unit was formed late in November 2006 combining all surveillance and disease investigators under one umbrella unit. This allowed for cross training and formation of a rapid response team in the event of a disease emergency. This became possible with funding from public health preparedness initiatives. Notable events for the year 2008 include the Norovirus outbreaks at long term care facilities in November. The distribution of the illness was throughout the facility. Infection Control practitioners in Alachua County were alerted and a packet of information regarding precautions to take for Norovirus in a long term care facility was distributed.

Chlamydia trachomatis, is the most commonly reported bacterial sexually transmitted disease (STD) in the United States. The trend in Florida is similar to the national trend, but the incidence in Alachua County is alarmingly higher. In 2008, there were 1,731 incident cases of Chlamydia reported in Alachua County.

In 2008, there were 30 cases of Campylobacteriosis in Alachua County, when compared to the number of cases in 2007, 19 cases, the incidences were almost doubled. The cases ranged in age from 1-60+ years of age. The highest incidence was reported in the age range of 20-24 and 40-49 years of age were both having reported 6 incident cases. When the reported incidence is broken down by gender, females were found to have a higher incidence of 21 (70%) compared to males with an incidence of 9 (30%).

In 2008, Alachua County reported 14 incident cases of Giardiasis. This was a marked decrease from 2007 in which 28 incident cases were reported. The distribution of the cases was from 1 to 59 years of age. There were 6 (43%) reported incidence cases for males and 8 (57%) for females.

In 2008, there were 84 incident cases of Salmonellosis reported in Alachua County. Of the cases reported in Alachua County the highest frequency was seen in the age group of 1-4 years of age (17 incident cases) and the lowest was seen in the 10-14 years of age (1 incident case). Also, Alachua County reported more females, 54 (64%) than males, 30(36%).

Since 2005 the highest frequency was seen in the age group of 1-4 years of age. More inquiry is needed into the cause of Salmonellosis in Alachua County's youngest residents.

In 2008, there was only one incident of Shigellosis in Alachua County seen in the age group of 1-4 years of age. When comparing 2008 (1 incident) to 2007 (10 incident cases) it appears that Alachua County had a notable decrease in the frequency of the cases of Shigellosis.

# Alachua County and Florida State Hepatitis Disease Incidence Report for 2008

	2008 (Week 1-53)		2007 (Week 1-53)		2005	2007
	Cases	Rates*	Cases	Rates*	(3 Yr. Average)	
	Cases	Rates*	Cases	Rates*	Cases	Rates*
<b>ALACHUA COUNTY</b>						
HEPATITIS A - 07010	3	1.201	0	0.000	2.00	0.815
HEPATITIS B (+HBsAg IN PREGNANT WOMEN) - 07039	11	16.598	11	16.009	9.67	11.231
HEPATITIS B, ACUTE - 07030	1	0.400	4	1.609	3.00	1.222
HEPATITIS B, CHRONIC - 07032	79	31.627	52	20.914	65.67	26.752
HEPATITIS B, PERINATAL - 07744	0	0.000	1	12.194	0.67	8.351
HEPATITIS C, CHRONIC - 07054	269	107.691	268	107.788	353.00	143.809
<b>Total:</b>	<b>363</b>	<b>157.518</b>	<b>336</b>	<b>158.513</b>	<b>434.000</b>	<b>192.181</b>

## STATEWIDE TOTAL

HEPATITIS A - 07010	165	0.873	171	0.911	231.00	1.257
HEPATITIS B (+HBsAg IN PREGNANT WOMEN) - 07039	599	16.783	643	16.929	540.33	9.821
HEPATITIS B, ACUTE - 07030	358	1.895	368	1.961	442.00	2.405
HEPATITIS B, CHRONIC - 07032	4000	21.168	3564	18.996	3014.67	16.400
HEPATITIS B, PERINATAL - 07744	3	0.445	2	0.299	3.33	0.506
HEPATITIS C, ACUTE - 07051	53	0.280	46	0.245	44.67	0.243
HEPATITIS C, CHRONIC - 07054	26896	142.333	23205	123.681	21169.00	115.164
<b>Total:</b>	<b>32074</b>	<b>183.777</b>	<b>27999</b>	<b>163.023</b>	<b>25445.000</b>	<b>145.796</b>

Data in Merlin reports are provisional, based on cases entered by county health departments and are not considered official data\*  
Rates are per 100,000

# Alachua County and Florida State Vaccine Preventable Disease Incidence Report for 2008

	2008 (Week 1-53)		2007 (Week 1-53)		2005 (3 Yr. Average)	2007 (3 Yr. Average)
	Cases	Rates*	Cases	Rates*	Cases	Rates*
<b>ALACHUA COUNTY</b>						
HEPATITIS B, ACUTE - 07030	1	0.400	4	1.609	3.00	1.222
MEASLES - 05590	0	0.000	5	2.011	1.67	0.679
PERTUSSIS - 03390	8	3.203	4	1.609	10.00	4.074
VARICELLA - 05290	57	22.819	17	6.837	5.67	2.309
<b>Total:</b>	<b>66</b>	<b>26.422</b>	<b>30</b>	<b>12.066</b>	<b>20.333</b>	<b>8.284</b>
<b>STATEWIDE TOTAL</b>						
HEPATITIS B, ACUTE - 07030	358	1.895	368	1.961	442.00	2.405
MEASLES - 05590	1	0.005	5	0.027	3.00	0.016
MUMPS - 07290	29	0.153	21	0.112	15.67	0.085
PERTUSSIS - 03390	314	1.662	211	1.125	215.67	1.173
RUBELLA - 05690	3	0.016	0	0.000	0.33	0.002
TETANUS - 03700	2	0.011	5	0.027	3.33	0.018
VARICELLA - 05290	1736	9.187	1321	7.041	460.00	2.502
<b>Total:</b>	<b>2443</b>	<b>12.928</b>	<b>1931</b>	<b>10.292</b>	<b>1140.000</b>	<b>6.202</b>

Data in Merlin reports are provisional, based on cases entered by county health departments and are not considered official data

\* Rates are per 100,000

## Alachua County and Florida State Enteric Disease Incidence Report for 2008

	2008 (Week 1-53)		2007 (Week 1-53)		2005 - 2007 (3 Yr. Average)	
	Cases	Rates*	Cases	Rates*	Cases	Rates*
<b>ALACHUA COUNTY</b>						
CAMPYLOBACTERIOSIS - 03840	30	12.010	19	7.642	19.33	7.876
CRYPTOSPORIDIOSIS - 13680	13	5.204	8	3.218	7.67	3.123
CYCLOSPORIASIS - 00720	1	0.400	3	1.207	5.33	2.173
E. COLI SHIGA TOXIN + (NOT SEROGROUPED) - 41603	0	0.000	0	0.000	0.33	0.136
GIARDIASIS - 00710	14	5.605	28	11.261	25.00	10.185
HEPATITIS A - 07010	3	1.201	0	0.000	2.00	0.815
SALMONELLOSIS - 00300	84	33.629	83	33.382	90.33	36.801
SHIGELLOSIS - 00490	1	0.400	10	4.022	16.00	6.518
TYPHOID FEVER - 00200	1	0.400	0	0.000	0.00	0.000
<b>Total:</b>	<b>147</b>	<b>58.850</b>	<b>151</b>	<b>60.731</b>	<b>166.000</b>	<b>67.627</b>
<b>STATEWIDE TOTAL</b>						
CAMPYLOBACTERIOSIS - 03840	1118	5.916	1017	5.421	950.67	5.172
CRYPTOSPORIDIOSIS - 13680	549	2.905	738	3.933	601.67	3.273
CYCLOSPORIASIS - 00720	59	0.312	32	0.171	195.67	1.064
E. COLI SHIGA TOXIN + (NOT SEROGROUPED) - 41603	57	0.302	117	0.624	66.33	0.361
E. COLI SHIGA TOXIN + (SEROGROUP NON-O157) - 41602	5	0.026	10	0.053	7.00	0.038
ENTEROHEMORRHAGIC E. COLI (EHEC) O157:H7 - 41601	33	0.175	37	0.197	59.33	0.323
ESCHERICHIA COLI, SHIGA TOXIN PRODUCING - 00800	53	0.280	0	0.000	0.00	0.000
GIARDIASIS - 00710	1391	7.361	1268	6.758	1140.00	6.202
HEPATITIS A - 07010	165	0.873	171	0.911	231.00	1.257
SALMONELLOSIS - 00300	5312	28.111	5023	26.772	5167.67	28.113
SHIGELLOSIS - 00490	801	4.239	2288	12.195	1734.67	9.437
TYPHOID FEVER - 00200	18	0.095	15	0.080	14.00	0.076
<b>Total:</b>	<b>9561</b>	<b>50.597</b>	<b>10716</b>	<b>57.115</b>	<b>10168.000</b>	<b>55.316</b>

Data in Merlin reports are provisional, based on cases entered by county health departments and are not considered official data  
 \* Rates are per 100,000

# Alachua County and Florida State All Disease Incidence Report for 2008

	2008 (Week 1-53)		2007 (Week 1-53)		2005 2007 (3 Yr. Average)	
	Cases	Rates*	Cases	Rates*	Cases	Rates*
<b>ALACHUA COUNTY</b>						
ANIMAL RABIES - 07102	3	1.201	7	2.815	11.33	4.617
CAMPYLOBACTERIOSIS - 03840	30	12.010	19	7.642	19.33	7.876
CREUTZFELDT-JAKOB DISEASE (CJD) - 04610	0	0.000	0	0.000	0.33	0.136
CRYPTOSPORIDIOSIS - 13680	13	5.204	8	3.218	7.67	3.123
CYCLOSPORIASIS - 00720	1	0.400	3	1.207	5.33	2.173
DENGUE FEVER - 06100	0	0.000	1	0.402	1.33	0.543
E. COLI SHIGA TOXIN + (NOT SEROGROUPED) - 41603	0	0.000	0	0.000	0.33	0.136
EHRlichiosis/ANAPLASMOSIS, HME, E. CHAFFEENSIS - 08382	3	1.201	6	2.413	2.67	1.086
GIARDIASIS - 00710	14	5.605	28	11.261	25.00	10.185
H. INFLUENZAE PNEUMONIA - 48220	0	0.000	2	0.804	1.00	0.407
HAEMOPHILUS INFLUENZAE (INVASIVE DISEASE) - 03841	1	0.400	1	0.402	1.33	0.543
HEPATITIS A - 07010	3	1.201	0	0.000	2.00	0.815
HEPATITIS B (+HBsAg IN PREGNANT WOMEN) - 07039	11	16.598	11	16.009	9.67	11.231
HEPATITIS B, ACUTE - 07030	1	0.400	4	1.609	3.00	1.222
HEPATITIS B, CHRONIC - 07032	79	31.627	52	20.914	65.67	26.752
HEPATITIS B, PERINATAL - 07744	0	0.000	1	12.194	0.67	8.351
HEPATITIS C, CHRONIC - 07054	269	107.691	268	107.788	353.00	143.809
LEAD POISONING - 94890	4	1.601	2	0.804	1.67	0.679
LEGIONELLOSIS - 48280	0	0.000	2	0.804	2.33	0.951
LISTERIOSIS - 02700	0	0.000	1	0.402	0.33	0.136
LYME DISEASE - 06959	3	1.201	1	0.402	0.33	0.136
MALARIA - 08460	3	1.201	1	0.402	1.00	0.407
MEASLES - 05590	0	0.000	5	2.011	1.67	0.679
MENINGITIS, BACTERIAL, CRYPTOCOCCAL, MYCOTIC - 32090	2	0.801	1	0.402	2.00	0.815
MENINGITIS, GROUP B STREP - 32040	0	0.000	3	1.207	1.00	0.407
MENINGITIS, STREP PNEUMONIAE - 32020	0	0.000	0	0.000	1.33	0.543
MENINGOCOCCAL DISEASE - 03630	2	0.801	0	0.000	0.67	0.272

MERCURY POISONING - 94899	1	0.400	0	0.000	0.00	0.000
PERTUSSIS - 03390	8	3.203	4	1.609	10.00	4.074
RABIES, POSSIBLE EXPOSURE - 07101	33	13.211	35	14.077	32.00	13.037
ROCKY MOUNTAIN SPOTTED FEVER - 08200	2	0.801	0	0.000	0.67	0.272
SALMONELLOSIS - 00300	84	33.629	83	33.382	90.33	36.801
SHIGELLOSIS - 00490	1	0.400	10	4.022	16.00	6.518
STREP PNEUMONIAE, INVASIVE DISEASE, DRUG-R - 04823	7	2.802	10	4.022	12.33	5.024
STREP PNEUMONIAE, INVASIVE DISEASE, SUSCEPT - 04830	16	6.405	9	3.620	9.67	3.938
STREPTOCOCCAL DISEASE INVASIVE GROUP A - 03400	0	0.000	5	2.011	3.33	1.358
TYPHOID FEVER - 00200	1	0.400	0	0.000	0.00	0.000
TYPHUS FEVER, ENDEMIC (MURIN) - 08100	0	0.000	0	0.000	0.33	0.136
VARICELLA - 05290	57	22.819	17	6.837	5.67	2.309
VIBRIO ALGINOLYTICUS - 00195	0	0.000	0	0.000	0.33	0.136
VIBRIO FLUVIALIS - 00194	0	0.000	0	0.000	0.33	0.136
VIBRIO PARAHAEMOLYTICUS - 00540	0	0.000	0	0.000	0.33	0.136
VIBRIO VULNIFICUS - 00199	0	0.000	0	0.000	0.67	0.272

<b>Total:</b>	<b>652</b>	<b>273.216</b>	<b>600</b>	<b>264.692</b>	<b>704.000</b>	<b>302.176</b>
---------------	------------	----------------	------------	----------------	----------------	----------------

## STATEWIDE TOTAL

ANIMAL RABIES - 07102	138	0.730	128	0.682	168.33	0.916
ARSENIC - 98080	1	0.005	0	0.000	0.00	0.000
BOTULISM, FOODBORNE - 00510	0	0.000	0	0.000	0.33	0.002
BOTULISM, INFANT - 00511	1	0.005	1	0.005	0.67	0.004
BRUCELLOSIS - 02300	10	0.053	10	0.053	6.00	0.033
CALIFORNIA SEROGROUP, NEUROINVASIVE - 06250	0	0.000	1	0.005	0.67	0.004
CALIFORNIA SEROGROUP, NON-NEUROINVASIVE - 06251	1	0.005	0	0.000	0.00	0.000
CAMPYLOBACTERIOSIS - 03840	1118	5.916	1017	5.421	950.67	5.172
CIGUATERA - 98809	53	0.280	29	0.155	23.67	0.129
CREUTZFELDT-JAKOB DISEASE (CJD) - 04610	25	0.132	12	0.064	14.33	0.078
CRYPTOSPORIDIOSIS - 13680	549	2.905	738	3.933	601.67	3.273
CYCLOSPORIASIS - 00720	59	0.312	32	0.171	195.67	1.064
DENGUE FEVER - 06100	33	0.175	46	0.245	28.33	0.154
E. COLI SHIGA TOXIN + (NOT SEROGROUPED) - 41603	57	0.302	117	0.624	66.33	0.361
E. COLI SHIGA TOXIN + (SEROGROUP NON-O157) - 41602	5	0.026	10	0.053	7.00	0.038

EASTERN EQUINE ENCEPHALITIS, NEUROINVASIVE - 06220	1	0.005	0	0.000	1.67	0.009
EHRlichiosis/ANAPLASMOSIS, HGE, A. PHAGOCYTOPHILUM - 08381	2	0.011	3	0.016	1.67	0.009
EHRlichiosis/ANAPLASMOSIS, HME, E. CHAFFEENSIS - 08382	12	0.064	18	0.096	9.00	0.049
ENCEPHALITIS, HERPES - 05430	4	0.021	10	0.053	5.00	0.027
ENCEPHALITIS, OTHER - 32390	3	0.016	8	0.043	5.67	0.031
ENCEPHALITIS, OTHER (NON-ARBOVIRAL) - 03236	5	0.026	0	0.000	0.00	0.000
ENTEROHEMORRHAGIC E. COLI (EHEC) O157:H7 - 41601	33	0.175	37	0.197	59.33	0.323
ESCHERICHIA COLI, SHIGA TOXIN PRODUCING - 00800	53	0.280	0	0.000	0.00	0.000
GIARDIASIS - 00710	1391	7.361	1268	6.758	1140.00	6.202
H. INFLUENZAE CELLULITIS - 69290	1	0.005	2	0.011	1.00	0.005
H. INFLUENZAE EPIGLOTTITIS - 46430	0	0.000	0	0.000	0.67	0.004
H. INFLUENZAE MENINGITIS - 32000	6	0.032	10	0.053	10.67	0.058
H. INFLUENZAE PNEUMONIA - 48220	29	0.153	41	0.219	29.33	0.160
H. INFLUENZAE SEPTIC ARTHRITIS - 71100	1	0.005	1	0.005	0.33	0.002
HAEMOPHILUS INFLUENZAE (INVASIVE DISEASE) - 03841	154	0.815	114	0.608	116.33	0.633
HANSEN'S DISEASE (LEPROSY) - 03090	10	0.053	10	0.053	6.33	0.034
HEMOLYTIC UREMIC SYNDROME - 42000	5	0.026	6	0.032	10.33	0.056
HEPATITIS A - 07010	165	0.873	171	0.911	231.00	1.257
HEPATITIS B (+HBsAg IN PREGNANT WOMEN) - 07039	599	16.783	643	16.929	540.33	9.821
HEPATITIS B, ACUTE - 07030	358	1.895	368	1.961	442.00	2.405
HEPATITIS B, CHRONIC - 07032	4000	21.168	3564	18.996	3014.67	16.400
HEPATITIS B, PERINATAL - 07744	3	0.445	2	0.299	3.33	0.506
HEPATITIS C, ACUTE - 07051	53	0.280	46	0.245	44.67	0.243
HEPATITIS C, CHRONIC - 07054	26896	142.333	23205	123.681	21169.00	115.164
HEPATITIS D - 07052	1	0.005	1	0.005	0.67	0.004
HEPATITIS E - 07053	0	0.000	1	0.005	0.67	0.004
HEPATITIS NANB, ACUTE - 07070	0	0.000	0	0.000	13.67	0.074
HEPATITIS UNSPECIFIED, ACUTE - 07090	0	0.000	0	0.000	1.33	0.007
INFLUENZA-ASSOCIATED PEDIATRIC MORTALITY - 48700	3	0.016	2	0.011	1.00	0.005
LEAD POISONING - 94890	614	3.249	432	2.303	480.67	2.615
LEGIONELLOSIS - 48280	149	0.789	153	0.815	146.33	0.796
LEPTOSPIROSIS - 10090	0	0.000	1	0.005	1.67	0.009

LISTERIOSIS - 02700	49	0.259	30	0.160	39.00	0.212
LYME DISEASE - 06959	101	0.534	30	0.160	37.00	0.201
MALARIA - 08460	65	0.344	56	0.298	61.67	0.335
MEASLES - 05590	1	0.005	5	0.027	3.00	0.016
MELIOIDOSIS - 02500	0	0.000	0	0.000	0.67	0.004
MENINGITIS, BACTERIAL, CRYPTOCOCCAL, MYCOTIC - 32090	199	1.053	135	0.720	142.00	0.773
MENINGITIS, GROUP B STREP - 32040	11	0.058	30	0.160	25.33	0.138
MENINGITIS, LISTERIA MONOCYTOGENES - 32070	1	0.005	4	0.021	8.67	0.047
MENINGITIS, STREP PNEUMONIAE - 32020	41	0.217	67	0.357	66.33	0.361
MENINGOCOCCAL DISEASE - 03630	54	0.286	67	0.357	76.67	0.417
MERCURY POISONING - 94899	69	0.365	24	0.128	29.00	0.158
MONKEY BITE - 07103	2	0.011	1	0.005	0.67	0.004
MUMPS - 07290	29	0.153	21	0.112	15.67	0.085
NEUROTOXIC SHELLFISH POISONING - 98800	0	0.000	1	0.005	7.00	0.038
PERTUSSIS - 03390	314	1.662	211	1.125	215.67	1.173
PESTICIDE-RELATED ILLNESS OR INJURY - 09894	0	0.000	2	0.011	1.00	0.005
PSITTACOSIS - 07390	2	0.011	0	0.000	0.33	0.002
Q FEVER - 08300	0	0.000	2	0.011	3.67	0.020
Q FEVER ACUTE - 08301	1	0.005	0	0.000	0.00	0.000
RABIES, POSSIBLE EXPOSURE - 07101	1618	8.562	1474	7.856	1311.00	7.132
ROCKY MOUNTAIN SPOTTED FEVER - 08200	20	0.106	19	0.101	18.00	0.098
RUBELLA - 05690	3	0.016	0	0.000	0.33	0.002
SALMONELLOSIS - 00300	5312	28.111	5023	26.772	5167.67	28.113
SHIGELLOSIS - 00490	801	4.239	2288	12.195	1734.67	9.437
STAPHYLOCOCCUS AUREUS (GISA/VISA) - 38100	3	0.016	1	0.005	0.33	0.002
STAPHYLOCOCCUS AUREUS, COMMUNITY ASSOCIATED MORTAL -04111	2	0.011	0	0.000	0.00	0.000
STAPHYLOCOCCUS ENTEROTOXIN B - 38200	2	0.011	0	0.000	0.00	0.000
STREP PNEUMONIAE, INVASIVE DISEASE, DRUG-R - 04823	792	4.191	726	3.870	704.67	3.834
STREP PNEUMONIAE, INVASIVE DISEASE, SUSCEPT - 04830	704	3.726	622	3.315	613.33	3.337
STREPTOCOCCAL DISEASE INVASIVE GROUP A - 03400	275	1.455	309	1.647	294.00	1.599
TETANUS - 03700	2	0.011	5	0.027	3.33	0.018
TOXOPLASMOSIS - 13090	14	0.074	9	0.048	5.00	0.027
TRICHINELLOSIS - 12400	1	0.005	0	0.000	0.67	0.004
TULAREMIA - 02190	0	0.000	0	0.000	0.33	0.002

TYPHOID FEVER - 00200	18	0.095	15	0.080	14.00	0.076
TYPHUS FEVER, ENDEMIC (MURIN) - 08100	0	0.000	1	0.005	1.00	0.005
VARICELLA - 05290	1736	9.187	1321	7.041	460.00	2.502
VIBRIO ALGINOLYTICUS - 00195	28	0.148	35	0.187	25.00	0.136
VIBRIO CHOLERAE NON-O1 - 00198	2	0.011	6	0.032	4.67	0.025
VIBRIO CHOLERAE TYPE O1 - 00190	1	0.005	0	0.000	0.00	0.000
VIBRIO FLUVIALIS - 00194	9	0.048	4	0.021	4.33	0.024
VIBRIO HOLLISAE - 00196	1	0.005	2	0.011	3.67	0.020
VIBRIO MIMICUS - 00197	4	0.021	0	0.000	1.33	0.007
VIBRIO PARAHAEMOLYTICUS - 00540	21	0.111	25	0.133	26.33	0.143
VIBRIO VULNIFICUS - 00199	16	0.085	21	0.112	29.00	0.158
VIBRIO, OTHER - 00193	12	0.064	4	0.021	5.33	0.029
WEST NILE VIRUS, NEUROINVASIVE - 06630	3	0.016	3	0.016	5.67	0.031
WEST NILE VIRUS, NON-NEUROINVASIVE - 06631	0	0.000	0	0.000	3.67	0.020

<b>Total:</b>	<b>48940</b>	<b>273.032</b>	<b>44857</b>	<b>252.874</b>	<b>40722.667</b>	<b>228.910</b>
---------------	--------------	----------------	--------------	----------------	------------------	----------------

Data in Merlin reports are provisional, based on cases entered by county health departments and are not considered official data

\* Rates are per 100,000

## Ten Year Trend of Reportable Diseases - Alachua County, 1999 - 2008

REPORTABLE DISEASE	1999	2000	2001	2002	2003	2004	2005	2006	2007	2008
RABIES, POSSIBLE EXPOSURE - 07101	6	7	22	27	28	26	38	23	35	33
ANIMAL RABIES - 07120	7	9	4	12	14	16	13	14	7	3
CAMPYLOBACTERIOSIS - 03840	14	23	6	15	17	21	20	19	19	30
CREUTZFELDT-JAKOB DISEASE (CJD) - 04610	0	0	0	0	0	0	0	1	0	0
CRYPTOSPORIDIOSIS - 13680	1	0	0	1	1	0	1	14	8	13
CYCLOSPORIASIS - 00720	1	0	0	0	0	1	13	0	4	1
DENGUE FEVER - 06100	0	0	0	0	1	0	1	2	1	0
E. COLI SHIGA TOXIN + (NOT SEROGROUPED) - 41603	0	0	0	0	0	1	0	1	1	0
EHRlichiosis/ANAPLASMOSIS, HME, E. CHAFFEENSIS - 08382	0	0	0	2	2	1	1	1	6	3
GIARDIASIS - 00710	16	27	17	14	12	11	22	25	30	14
H. INFLUENZAE PNEUMONIA - 48220	0	0	0	0	0	0	1	0	2	0
HAEMOPHILUS INFLUENZAE (INVASIVE DISEASE) - 03841	0	0	0	0	0	1	2	1	1	1
HEPATITIS A - 07010	8	4	3	6	12	3	2	4	0	2
HEPATITIS B (+HBsAg IN PREGNANT WOMEN) - 07039	2	1	0	1	4	23	7	11	11	11
HEPATITIS B, ACUTE - 07030	2	4	3	5	4	0	4	1	4	1
HEPATITIS B, CHRONIC - 07032	0	0	0	2	39	131	88	57	52	79

HEPATITIS B, PERINATAL - 07744	0	0	0	0	0	0	0	1	1	0
HEPATITIS C, CHRONIC - 07054	0	0	1	10	155	545	436	355	268	269
LEAD POISONING - 94890	6	1	0	4	2	2	2	1	2	4
LEGIONELLOSIS-48280	0	0	0	0	1	1	2	3	2	0
LISTERIOSIS - 02700	0	2	0	0	0	0	0	0	1	0
LYME DISEASE - 06959	0	1	0	0	0	6	0	0	1	3
MALARIA - 08460	4	5	1	1	2	0	1	1	1	3
MEASLES - 05590	0	0	0	0	0	0	0	0	5	0
MENINGITIS, BACTERIAL, CRYPTOCOCCAL, MYCOTIC - 32090	1	0	3	1	7	0	1	4	1	2
MENINGITIS, GROUP B STREP - 32040	0	1	2	0	0	0	0	0	3	0
MENINGITIS, STREP PNEUMONIAE - 32020	1	2	0	1	0	0	2	2	0	0
MENINGOCOCCAL DISEASE - 03630	0	0	0	0	1	3	1	1	0	2
PERTUSSIS - 03390	2	0	1	0	0	2	25	1	4	8
ROCKY MOUNTAIN SPOTTED FEVER - 08200	0	0	0	1	1	2	1	1	0	2
SALMONELLOSIS - 00300	57	49	45	62	69	83	101	87	83	84
SHIGELLOSIS - 00490	39	5	5	11	62	4	9	29	10	1
STREP PNEUMONIAE, INVASIVE DISEASE, DRUG-R - 04823	7	11	3	8	9	7	13	14	10	7
STREP PNEUMONIAE, INVASIVE DISEASE, SUSCEPT - 04830	0	0	0	0	4	12	14	6	9	16

STREPTOCOCCAL DISEASE INVASIVE GROUP A - 03400	0	4	3	1	0	0	0	5	5	0
TYPHOID FEVER - 00200	0	0	0	1	0	0	0	0	0	1
TYPHUS FEVER, ENDEMIC (MURIN) - 08100	0	0	0	0	0	0	0	1	0	0
VARICELLA - 05290	0	0	0	0	0	0	0	0	17	57
VIBRIO FLUVIALIS - 00194	0	0	0	0	0	0	1	0	0	0
VIBRIO PARAHAEMOLYTICUS - 00540	1	0	0	0	0	2	0	1	0	0

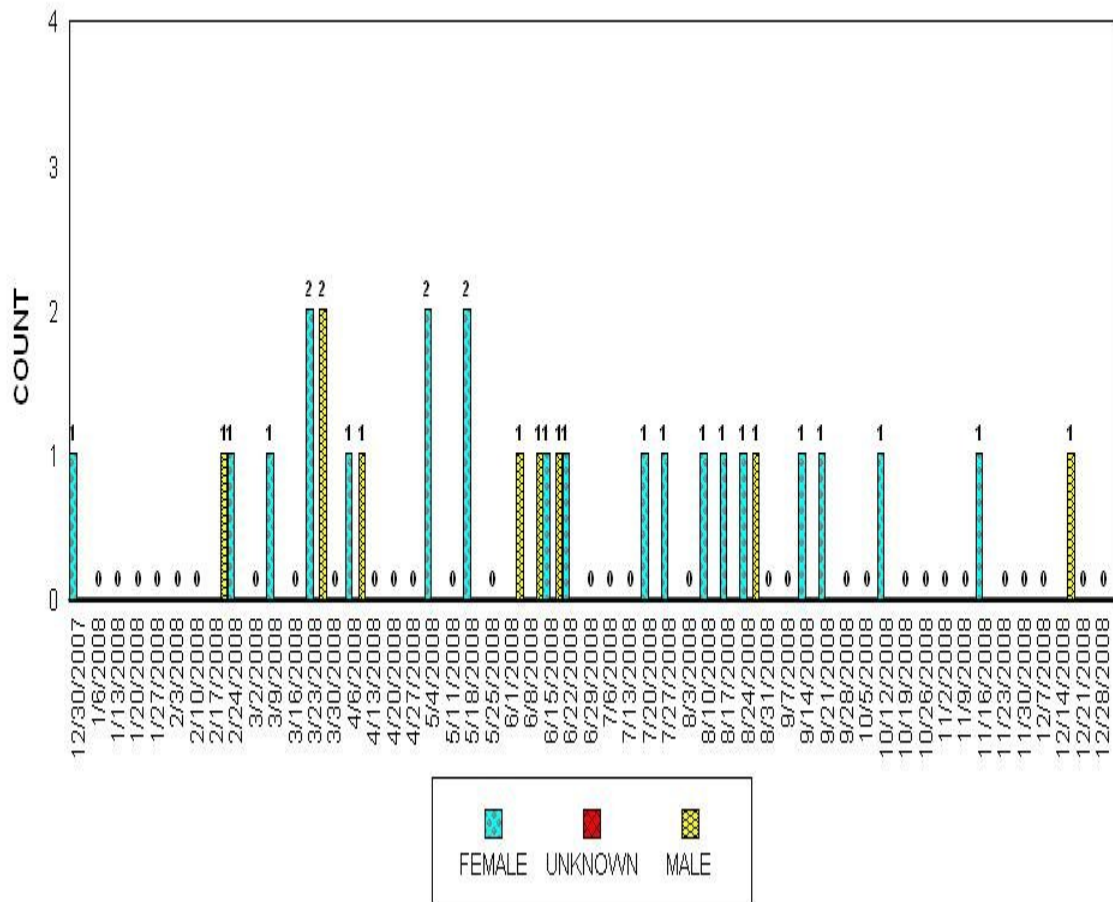
## Disease Frequency by Gender Group - Alachua County, 2008

Disease	Male	Female	Total
CAMPYLOBACTERIOSIS - 03840	11	19	30
CRYPTOSPORIDIOSIS - 13680	6	7	13
CYCLOSPORIASIS - 00720	1	0	1
EHRlichiosis/ANAPLASMOSIS, HME, E. CHAFFEENSIS - 08382	2	1	3
GIARDIASIS - 00710	6	8	14
HAEMOPHILUS INFLUENZAE (INVASIVE DISEASE) - 03841	0	1	1
HEPATITIS A - 07010	2	1	3
HEPATITIS B (+HBsAg IN PREGNANT WOMEN) - 07039	0	11	11
HEPATITIS B, ACUTE - 07030	1	0	1
HEPATITIS B, CHRONIC - 07032	43	36	79
HEPATITIS C, CHRONIC - 07054	157	112	269
LEAD POISONING - 94890	3	1	4
LYME DISEASE - 06959	2	1	3
MALARIA - 08460	2	1	3
MENINGITIS, BACTERIAL, CRYPTOCOCCAL, MYCOTIC - 32090	1	1	2
MENINGOCOCCAL DISEASE - 03630	0	2	2
MERCURY POISONING - 94899	1	0	1
PERTUSSIS - 03390	4	4	8
RABIES, POSSIBLE EXPOSURE - 07101	16	17	33
ROCKY MOUNTAIN SPOTTED FEVER - 08200	1	1	2
SALMONELLOSIS - 00300	28	56	84
SHIGELLOSIS - 00490	1	0	1
STREP PNEUMONIAE, INVASIVE DISEASE, DRUG-R - 04823	3	4	7
STREP PNEUMONIAE, INVASIVE DISEASE, SUSCEPT - 04830	10	6	16
TYPHOID FEVER - 00200	1	0	1
VARICELLA - 05290	34	23	57
<b>TOTAL:</b>	<b>336</b>	<b>313</b>	<b>649</b>
<b>STATEWIDE TOTAL:</b>	<b>28,017</b>	<b>20,674</b>	<b>48691</b>

## Disease Frequency by Age Group - Alachua County, 2008

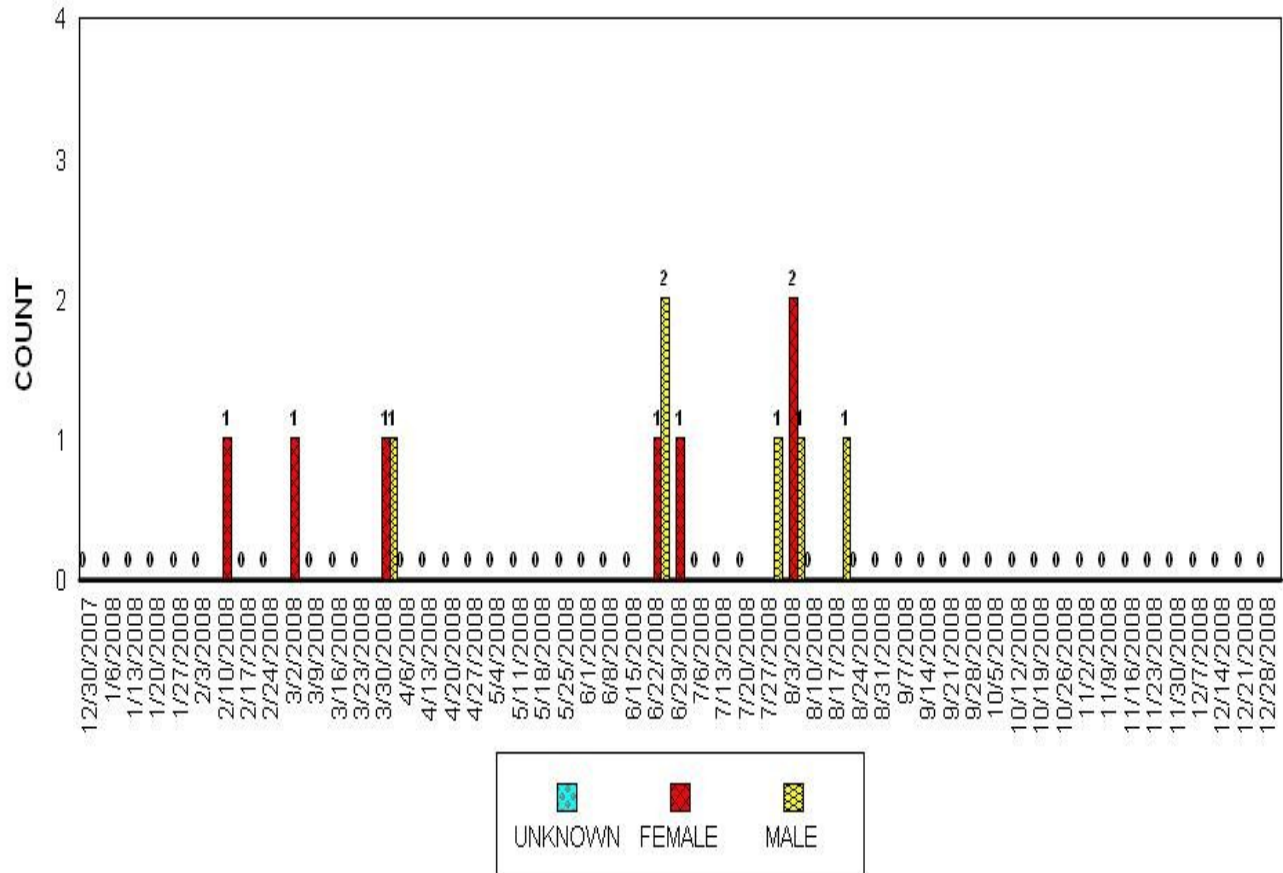
<b>DISEASE</b>	<1 yr	1 - 4	5 - 9	10 - 14	15 - 19	20 - 24	25 - 29	30 - 39	40 - 49	50 - 59	60+	TOTAL
CAMPYLOBACTERIOSIS - 03840	0	1	1	0	0	6	2	5	6	4	5	30
CRYPTOSPORIDIOSIS - 13680	0	2	0	2	0	1	1	1	1	1	4	13
CYCLOSPORIASIS - 00720	0	0	0	0	0	0	0	0	0	0	1	1
EHRlichiosis/ANAPLASMOSIS, HME, E.CHAFFEENSIS - 08382	0	1	0	0	1	0	0	0	0	0	1	3
GIARDIASIS - 00710	0	3	2	1	1	2	0	1	1	3	0	14
HAEMOPHILUS INFLUENZAE (INVASIVE DISEASE) - 03841	0	0	0	0	0	0	0	0	0	0	1	1
HEPATITIS A - 07010	0	0	0	0	0	0	2	0	1	0	0	3
HEPATITIS B (+HBsAg PREGNANT WOMEN) - 07039	0	0	0	0	0	3	4	3	1	0	0	11
HEPATITIS B, ACUTE - 07030	0	0	0	0	0	0	0	0	0	0	1	1
HEPATITIS B, CHRONIC - 07032	0	0	0	0	0	12	7	21	16	15	8	79
HEPATITIS C, CHRONIC - 07054	0	0	0	0	2	6	8	18	70	134	31	269
LEAD POISONING - 94890	0	4	0	0	0	0	0	0	0	0	0	4
LYME DISEASE - 06959	0	0	0	1	1	0	0	0	0	1	0	3
MALARIA - 08460	0	1	1	0	0	0	0	0	0	1	0	3
MENINGITIS, BACTERIAL, CRYPTOCOCCAL, MYCOTIC-32090	1	0	0	0	0	0	0	1	0	0	0	2
MENINGOCOCCAL DISEASE - 0363	0	0	0	0	0	1	0	0	1	0	0	2
MERCURY POISONING - 94899	0	0	0	0	0	0	0	0	0	1	0	1
PERTUSSIS - 03390	1	2	3	1	0	0	0	1	0	0	0	8
RABIES, POSSIBLE EXPOSURE - 07101	0	0	1	0	2	5	7	5	4	5	4	33
ROCKY MOUNTAIN SPOTTED FEVER- 08200	0	0	0	0	0	0	0	0	0	0	2	2
SALMONELLOSIS - 00300	11	17	3	1	4	5	5	14	9	7	8	84
SHIGELLOSIS - 00490	0	1	0	0	0	0	0	0	0	0	0	1
STREP PNEUMONIAE, INVASIVE DISEASE, DRUG-R - 04823	1	0	0	0	0	0	0	0	2	1	3	7
STREP PNEUMONIAE, INVASIVE DISEASE, SUSCEPT -04830	0	1	0	0	0	0	2	2	3	2	6	16
TYPHOID FEVER - 00200	0	0	0	0	0	1	0	0	0	0	0	1
VARICELLA - 05290	5	6	26	11	3	1	0	2	3	0	0	57
<b>TOTAL:</b>	19	39	37	17	14	43	38	74	118	175	75	649
<b>STATEWIDE TOTAL:</b>	1611	2975	2095	1191	1096	1781	2476	5333	9992	12669	7583	48802

## Disease Frequency of Campylobacterosis in Alachua County, 2008



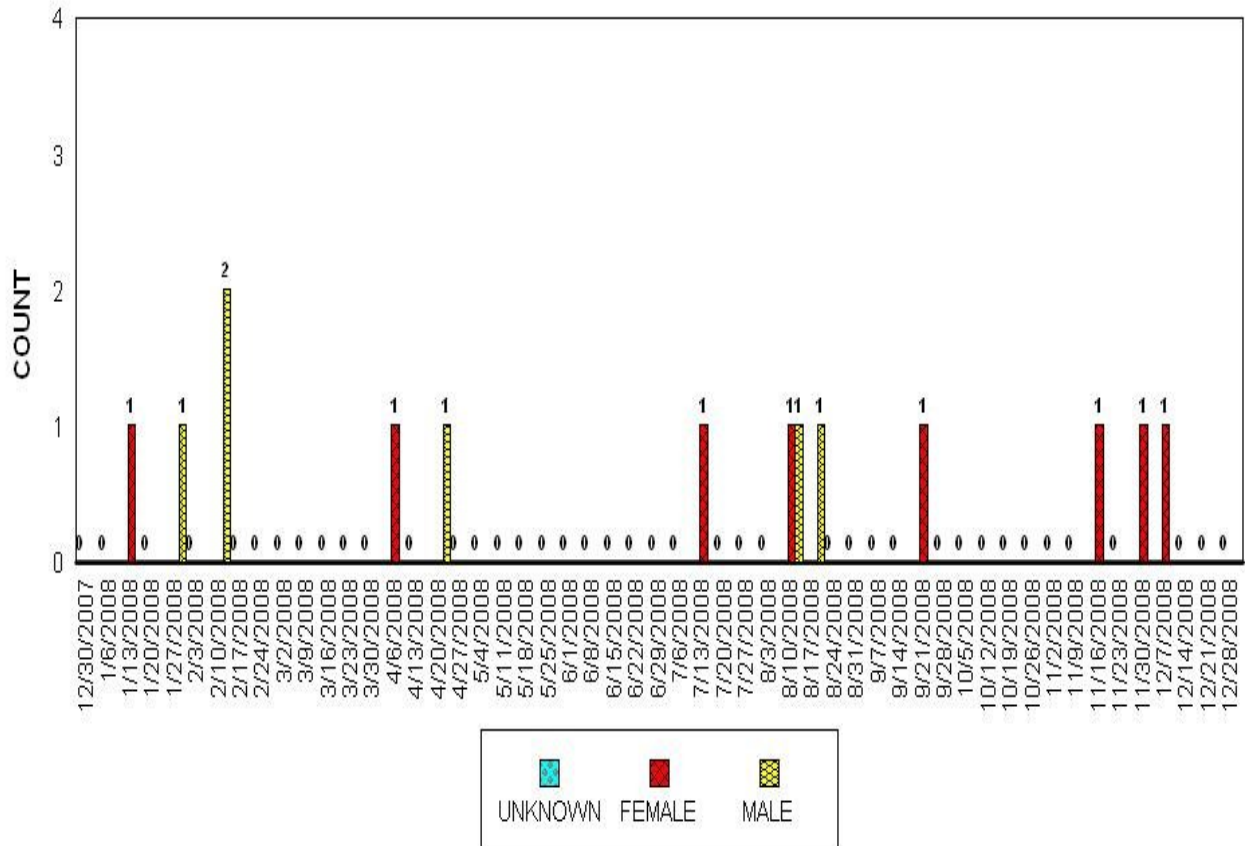
**Total Number of Cases: 30**

## Disease Frequency of Cryptosporidiosis in Alachua County, 2008



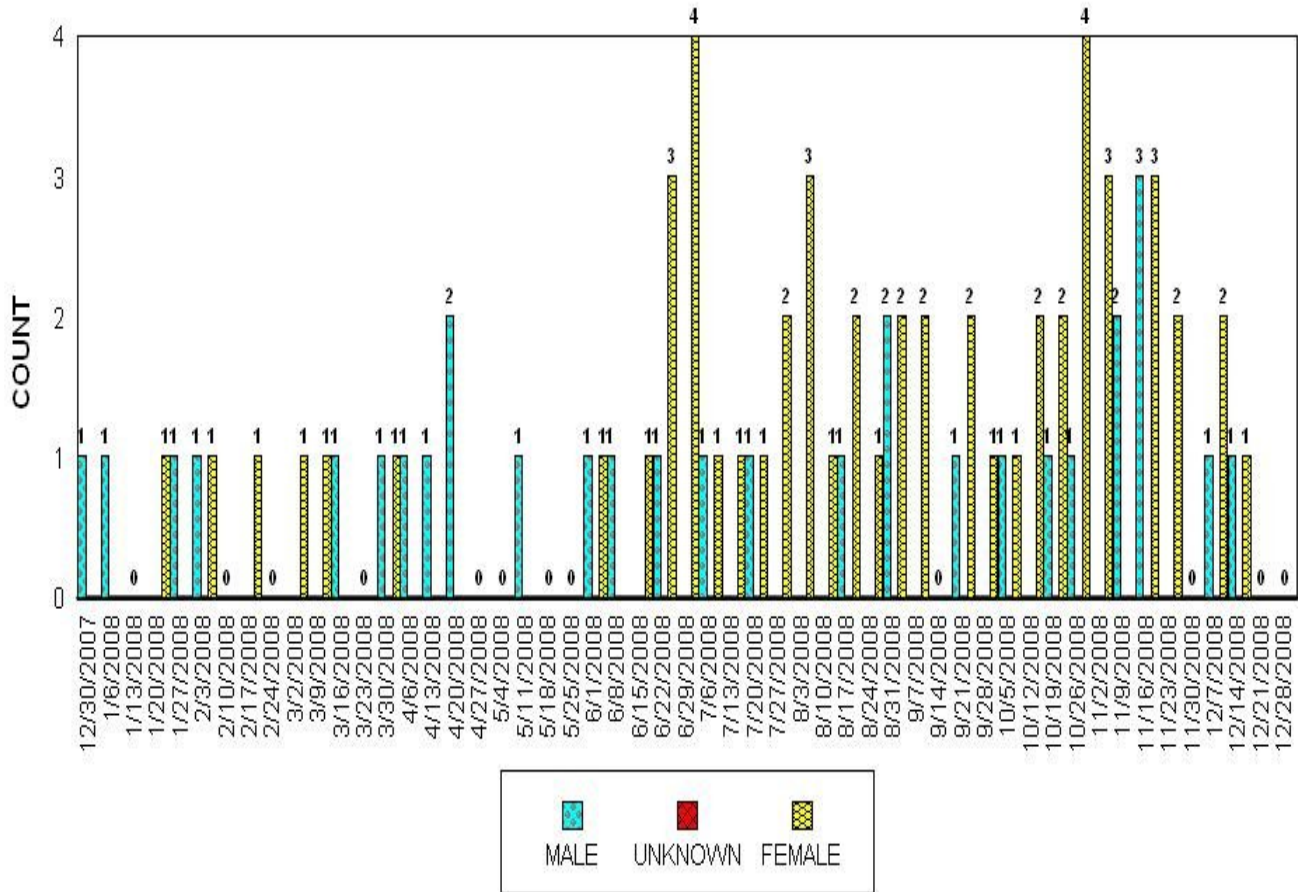
**Total Number of Cases: 13**

## Disease Frequency of Giardiasis in Alachua County, 2008



**Total Number of Cases: 14**

# Disease Frequency of Salmonellosis by Gender in Alachua County, 2008



**Total Number of Cases: 84**

## Summary of Rabies Surveillance 2008

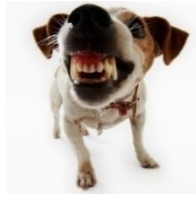
### Frequency of Human Exposure by Animal Species and the Test Results

Species	Number of Exposures	Positive	Negative	No Test	Unable to Confirm/ unknown
Dog	80	0	4	76	0
Cat	36	0	5	31	0
Raccoon	10	0	9	1	0
Bat	3	0	3	0	0
Panther	2	0	1	0	1
Horse	5	0	4	1	0
Fox	2	0	1	0	1
Rat	2	0	2	0	0
Bear	1	0	1	0	0
Deer	1	0	1	0	0
Monkey	1	0	1	0	0
<b>Total</b>	<b>143</b>	<b>0</b>	<b>32</b>	<b>109</b>	<b>2</b>

## 2008 Summary of Bite Reports/Animals Tested in Alachua County



177 bite reports on CATS



299 bite reports on DOGS

568 total bite reports

127 animals tested **3 came back positive**

- 23 dogs
- 32 cats – **1 positive**
- 5 fox
- 3 rats
- 14 horses
- 20 raccoons – **1 positive**
- 11 panthers
- 2 monkeys
- 1 otter
- 1 alpaca
- 9 bats – **1 positive**
- 1 goat
- 2 deer
- 1 bear
- 1 bob cat
- 1 squirrel



# TB Data

## Incidence of Tuberculosis

COUNTY	Cases	Population	Incidence Rate (per 100,000)
<b>ALACHUA</b>	<b>10</b>	<b>249,788</b>	<b>4.0</b>
<b>FLORIDA</b>	<b>953</b>	<b>18,896,559</b>	<b>5.0</b>

**Data Source:** The Bureau of TB and Refugee Health TIMS as of February 5, 2009  
Census data acquired from the Florida Legislature, Office of Economic and Demographic Research via CHARTS (Florida's Community Health Resource Tool Set).  
State and federal prison cases.

# STD Data

Alachua County Reported Cases of STDs with Number of Cases that have a Confirmatory HIV+ Test

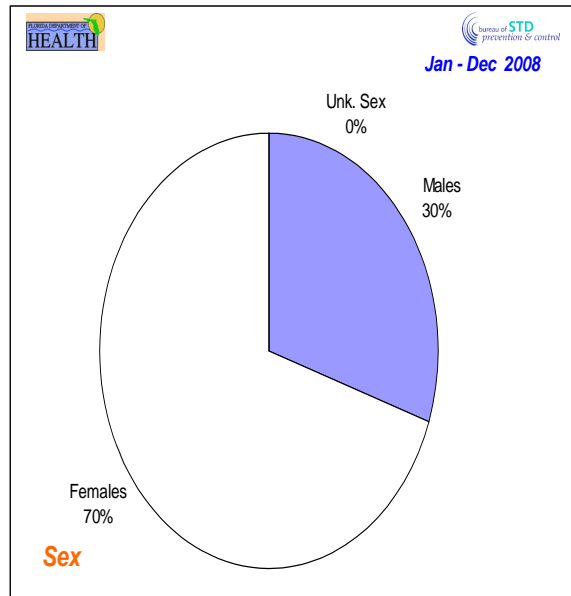
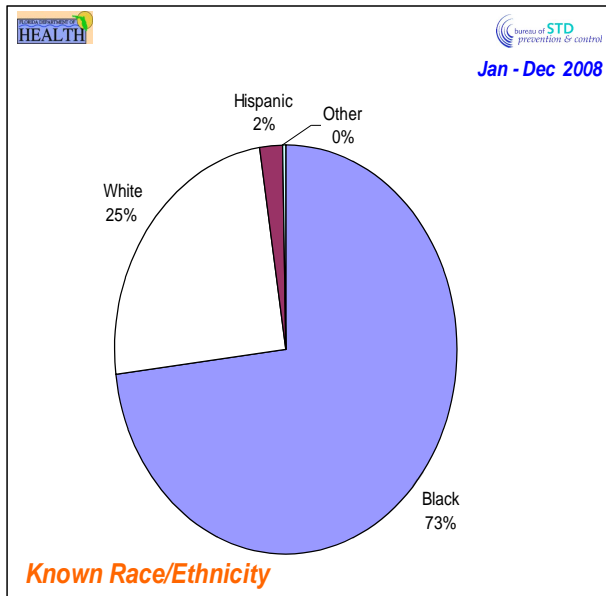
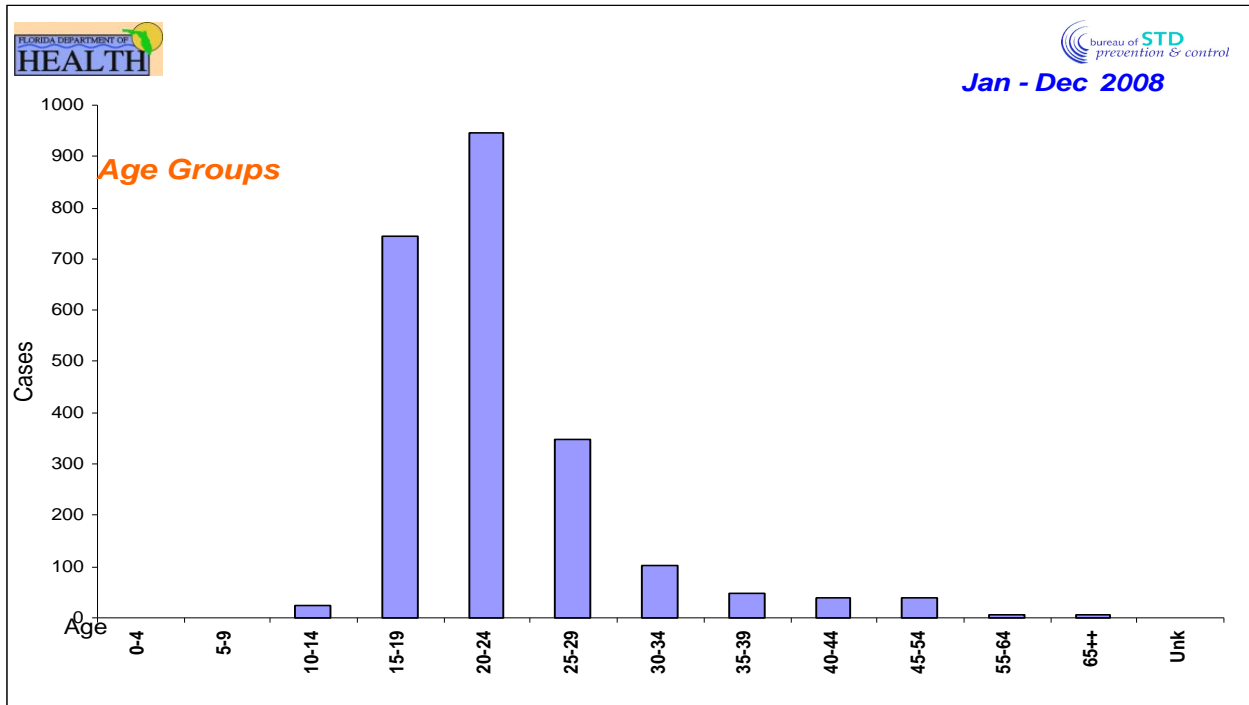
STDs	Cases	# HIV +	% HIV +
Infectious Syphilis	11	2	18%
Early Latent Syphilis	4	1	25%
Late Latent Syphilis	7	2	29%
Chlamydia	1,731	7	0.4%
Gonorrhea	552	11	2.0%
Total STDs	2,305	23	1.0%

Alachua County Reported Cases of STDs and the number of those cases with a documented test in the Bureau of STD data files Meeting the CDC Surveillance Case Definition for HIV Infection

Data Source: Florida Dept. of Health, Bureau of STD data files

# Syphilis, Chlamydia & Gonorrhea for Alachua County, 2008

## Age Group, Race/Ethnicity & Sex



Data Source: Florida Dept. of Health, Division of Disease Control, Bureau of STD data files.

In the chart on the percent of cases reported with a Known Race/Ethnicity, the category "Other" Includes: Non Hispanic American Indian, Non Hispanic Asian /Pacific Islander and Non Hispanic Other.

## HIV AND AIDS MORBIDITY, SAME PERIOD COMPARISON, ALACHUA COUNTY

COUNTY	REPORTED HIV CASES** (REGARDLESS OF AIDS STATUS) Jan - Nov 07	REPORTED HIV CASES** (REGARDLESS OF AIDS STATUS) Jan - Nov 08	HIV PERCENT CHANGE	2008 HIV CASE RANK	REPORTED AIDS CASES Jan - Nov 07	REPORTED AIDS CASES Jan - Nov 08	AIDS PERCENT CHANGE	2008 AIDS CASE RANK	PRESUMED LIVING HIV/AIDS CASES AS OF 11/30/2008
ALACHUA	53	64	21%	17	33	37	12%	20	780

**\*\*HIV data includes those cases that have converted to AIDS. These HIV cases cannot be added with AIDS cases to get combined totals since the categories are not mutually exclusive.  
The Florida Division of Disease Control Surveillance Report.**

## Pneumonia and Influenza Data

### Pneumonia and Influenza Mortality Report for Alachua County, 2008

<b>Age Ranges</b>	<b>All Deaths</b>	<b>Pneumonia</b>	<b>Influenza</b>
Under 28 Days	69	0	0
28 Days – 1 Year	33	2	0
1 – 14 Years	18	0	0
15 – 24 Years	63	1	1
25 – 44 Years	149	10	0
45 – 64 Years	739	34	1
65 – 74 Years	559	44	0
75 – 84 Years	691	57	0
85 and Over	609	59	0
<b>Total</b>	<b>2930</b>	<b>207</b>	<b>2</b>

Source: Alachua County Vital Statistics  
Epi-Com

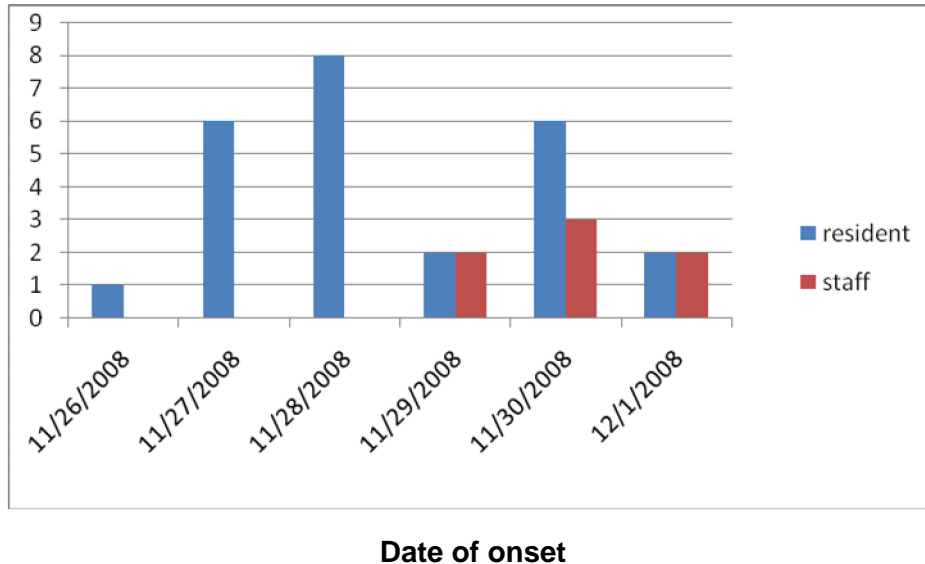
# Outbreaks Investigated by Alachua County Epidemiology Department 2008

## Norovirus outbreak at an independent living care facility

The Alachua County Disease Control Unit received an alert because an independent living facility reported several cases of GI illness in their facility. Infection Control practitioners in Alachua County were alerted and the facility was contacted to confirm this report and to gather more information. Facility outbreak investigation was conducted. Symptoms included nausea, vomiting, and diarrhea. Duration of illness was 12 - 36 hours with an average of 24 hours. The onset of illnesses began on 11/27/08. Last report of symptoms was 12/01/08. Twenty-five out of 190 residents (13% attack rate) and 7 out of 47 staff (15% attack rate) were symptomatic. Stool specimens tested positive for Norovirus G2. The distribution of the illness was throughout the facility.

Date of onset	resident	staff
11/26/08	1	0
11/27/08	6	0
11/28/08	8	0
11/29/08	2	2
11/30/08	6	2
12/1/08	2	2

2 patients lab confirmed with Norovirus G2 on 11/29/08 and 11/30/0

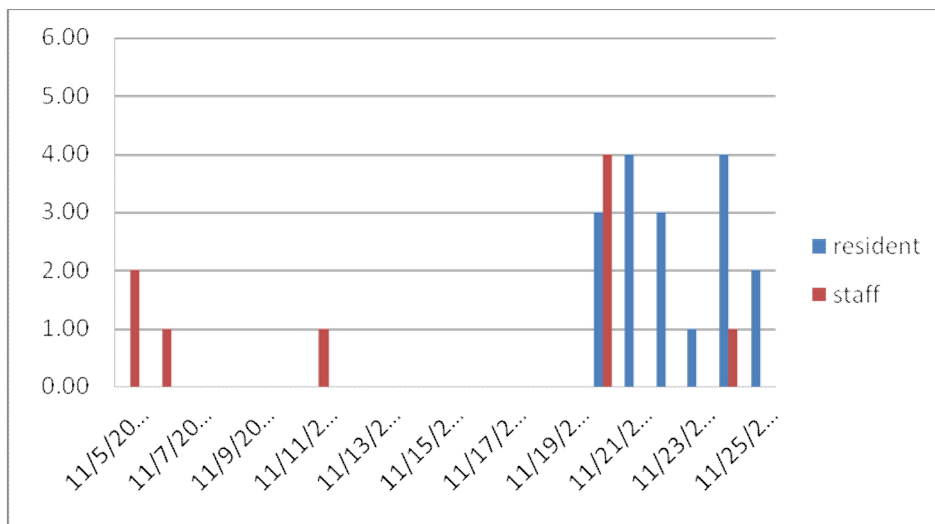


## Norovirus Outbreak at an assisted living/memory care facility

The Alachua County Disease Control Unit received an alert because an assisted living/memory care facility reported several cases of GI illness in their facility. Infection Control practitioners in Alachua County were alerted and the facility was contacted to confirm this report and to gather more information. Facility outbreak investigation was conducted. Symptoms included nausea, vomiting, diarrhea, abdominal pain and fevers. Duration of illness was 24-48 hours. The onset of illnesses began on 11/5/08 lasting up to 11/26/08. Thirty two out of 66 residents (48% attack rate) and 12 out of 60 staff (20% attack rate) were symptomatic. The pathogen was confirmed to be Norovirus G2.

Date of onset	resident	staff
11/5/08	0	2
11/6/08	0	1
11/11/08	0	1
11/20/08	3	4
11/21/08	4	0
11/22/08	3	0
11/23/08	1	0
11/24/08	4	1
11/25/08	2	0

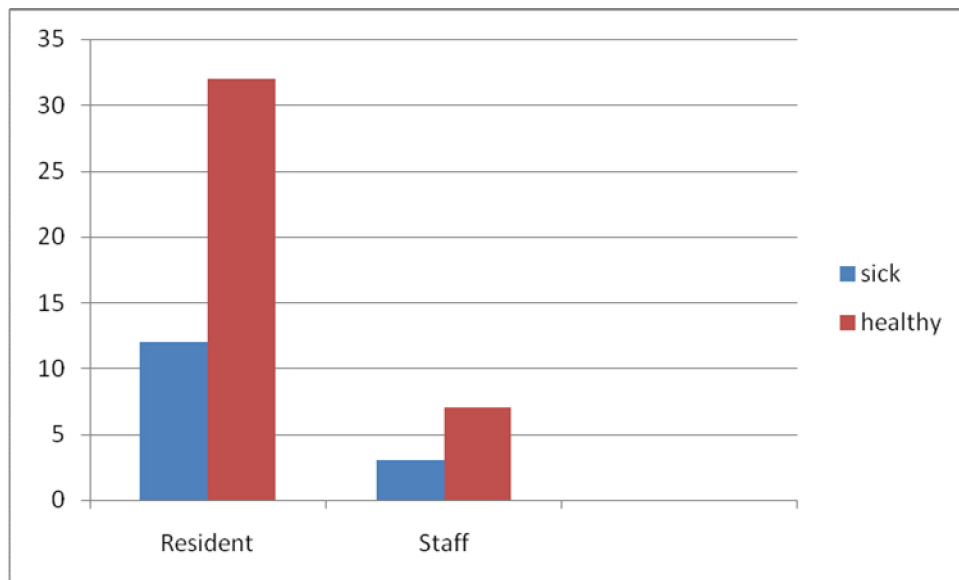
## Norovirus Outbreak at Harbor Chase of Gainesville



Date of onset

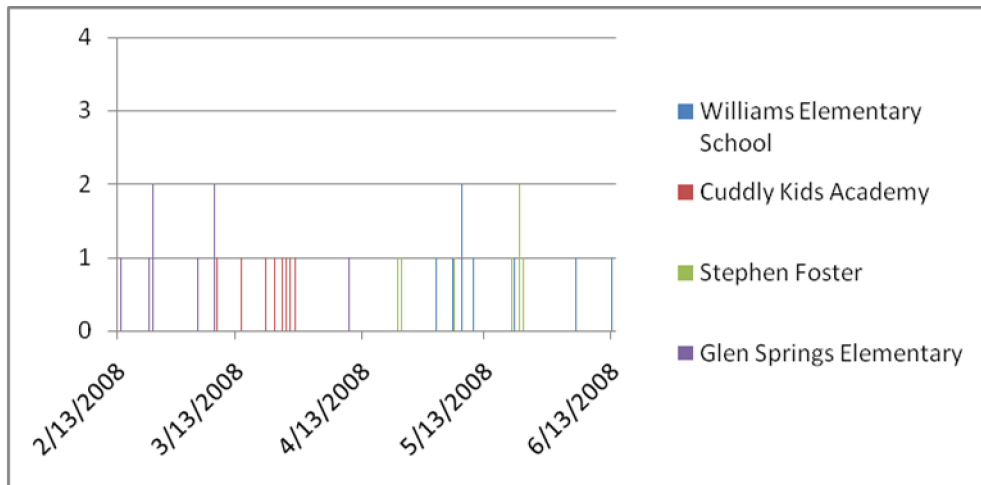
## Norovirus Outbreak at Clare Bridge Gainesville

The Alachua County Disease Control Unit received an alert because an assisted living/memory care facility reported several cases of GI illness in their facility. Infection Control practitioners in Alachua County were alerted and the facility was contacted to confirm this report and to gather more information. Facility outbreak investigation was conducted. Symptoms were included vomiting and diarrhea. The onset of illnesses began on 11/6/08 lasting up to 11/20/08. Twelve out of 35 residents (34% attack rate) and 3 out of 12 staff (25% attack rate) were symptomatic. Two patients lab confirmed with Norovirus G1.



## Varicella Outbreak

In November 2006, Varicella (Chicken Pox) was added to the list of reportable diseases. Varicella surveillance began in 2007. During the year 2008 three elementary schools and one daycare center reported multiple cases of chickenpox. Ages and distribution between schools is depicted in the two graphs below. Almost all of the children had received one dose of the Varicella vaccine except for the daycare center where many of them were too young to get the vaccine. Most of the children reported relatively mild cases of less than 50 pox lesions. There were few with >100 pox lesions. Two of the reported cases were unconfirmed, one diagnosed with scabies and the second diagnosed as bug bite.



Date of Onset

