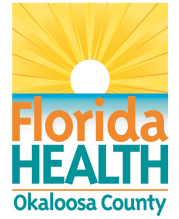


Weekly Disease Surveillance Report



2024 Reporting Week 12: March 17 — March 23

This weekly report is produced by the DOH-Okaloosa Epidemiology Section to provide situational awareness to community partners. Data is subject to change as additional information is gathered.

CDC Health Advisory

**Increase in Global and Domestic Measles Cases and Outbreaks:
Ensure Children in the United States and Those Traveling Internationally 6 Months and Older are Current on MMR Vaccination**

The Centers for Disease Control and Prevention (CDC) has issued a Health Alert Network (HAN) [Health Advisory](#) to inform clinicians and public health officials of an increase in global and US measles cases and to provide guidance on measles prevention for all international travelers (aged ≥ 6 months) and all children (aged ≥ 12 months) who do not plan to travel internationally.

Since January 1, 2024, the U.S. has already matched the total number of measles cases reported the entire year in 2023. Among the 58 cases reported in 2024, 54 (93%) were linked to international travel. Most cases reported in 2024 have been among children aged 12 months and older who had not received measles-mumps-rubella (MMR) vaccine. For more information and guidance on how to prevent measles infection and reduce the risk of community transmission from importation, please visit CDC Measles [For Healthcare Providers](#).

ILI Trends

Influenza-like illness (ILI) in Okaloosa continued to decrease during Week 12 and is below the previous year's level (current level: 2.72%; last year: 3.28%). Please stay vigilant, promote vaccination, and visit the weekly [Florida FLU REVIEW](#).

COVID-19 Trends

COVID-19 hospital admission levels for Okaloosa County remained LOW for Week 12. For more information on the recommended actions based on the current levels, please visit the [CDC COVID-19 by County](#) webpage.

Contact Us:

**Florida Department of Health
in Okaloosa County**

Epidemiology Section

**24/7 Disease Reporting:
850-833-9065**

**Confidential Fax:
850-833-7577**

okaloosaepi@flhealth.gov

COVID-19 Corner

Week 12 Hospital Admission Level

COVID-19 Hospital Admissions Level

New Hospital Admissions per 100K Population per Week

LOW

3.0

PREVIOUS WEEK LEVEL: LOW

The Community Level has been retired with the end of the federal COVID-19 Public Health Emergency (PHE).

As a replacement, COVID-19 Hospital Admission Level will be used as an indicator for recommended interventions in the community based on each level and individual or community focus.

For more information on the levels and recommended actions based on the current level, please visit the [CDC COVID-19 by County](#) webpage.

HIGH		≥ 20.0
MEDIUM		10.0 - 19.9
LOW		<10.0

In the Know: Measles in Florida

Measles cases have been reported in Broward County, as well as a travel-related case in Central Florida. As of March 21, 2024, a total of 64 measles cases were reported by 17 jurisdictions: Arizona, California, Florida, Georgia, Illinois, Indiana, Louisiana, Maryland, Michigan, Minnesota, Missouri, New Jersey, New York City, Ohio, Pennsylvania, Virginia, and Washington.

Because measles is highly contagious, the Florida Department of Health is providing this [linked information](#) to health care providers regarding the identification, testing, and management of suspected cases.

If you suspect measles in a patient with a febrile rash illness, please contact DOH-Okaloosa at 850-833-9065 (or your local [county health department](#)) **immediately** and review the linked information mentioned above. Suspected measles cases are required to be reported immediately to ensure prompt response and public health efforts.

For the latest information about measles, please visit the CDC Measles [For Healthcare Providers](#) resource.



Influenza-Like Illness

Week 12: March 17 - March 23

Influenza-like Illness (ILI) is defined as fever greater than or equal to 100°F AND cough and/or sore throat in the absence of another known cause.

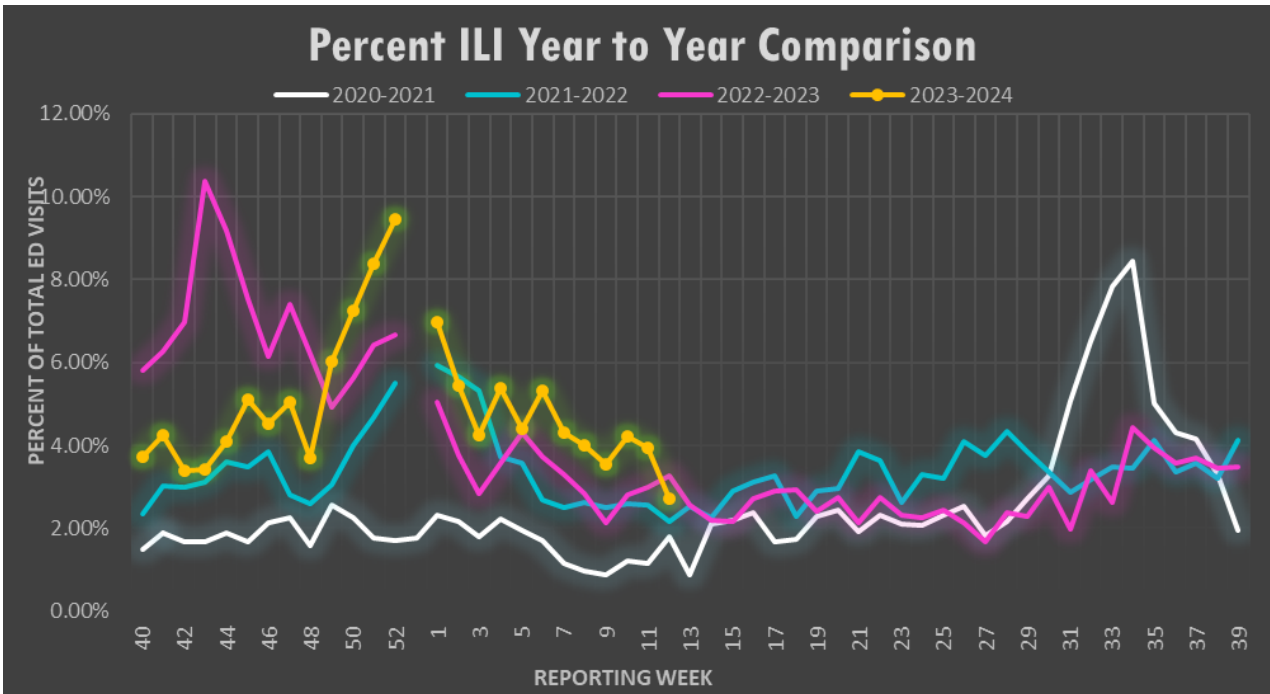


Figure 2: Annual comparison of the percent of all hospital ED visits due to ILI for Okaloosa county for the 2020-21, 2021-22, 2022-23 and 2023-2024 influenza seasons by week. Data source: ESSENCE

ANALYSIS: During Week 12, flu reporting partners and ESSENCE (a syndromic surveillance system) reported a decrease in ILI activity for Okaloosa County. The percentage of ILI ED visits in Okaloosa County decreased this week (3.94% during Week 11 to 2.72% during Week 12). Flu partners reported 15 positive rapid flu tests this week (9 Influenza A and 6 Influenza B). Over the past three weeks, no influenza specimens submitted to the state lab were positive. There were no ILI admissions or deaths reported by flu partners this week. No outbreaks have been reported in the past 3 weeks. The percentage of total ILI ED visits for Week 12 is lower than that of Week 12 last year.
Note: Other respiratory syndromes can be represented by increased ILI case numbers.
 Data Source: ESSENCE

% ILI by Age Group Week 12, 2024			
Age Range	ILI Visits	Total ED Visits	% Total ILI Visits
0-4	19	170	11.18%
5-19	12	222	5.41%
20-34	13	545	2.39%
35-54	12	579	2.07%
55-74	10	588	1.70%
75+	1	351	0.28%

Data Source: ESSENCE

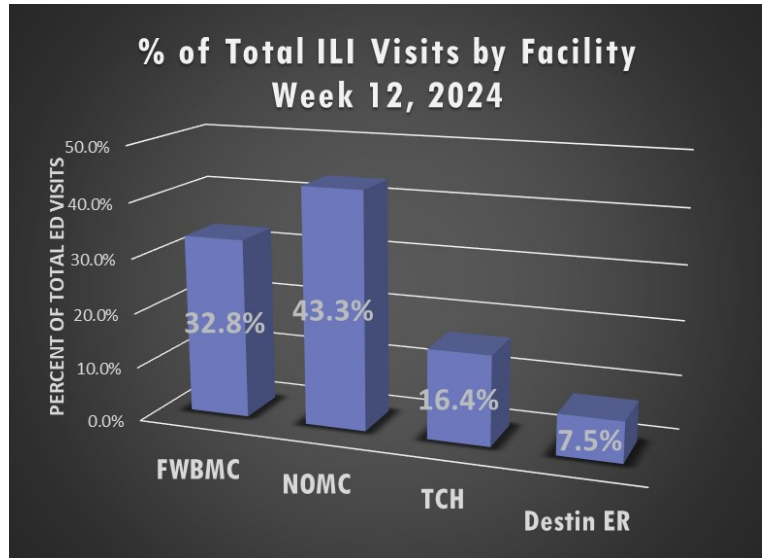


Figure 3: Hospital ED visits meeting ILI criteria stratified by facility. Percentages calculated based on total number of ILI ED visits. (n=37). Data source: ESSENCE



Syndromic Surveillance

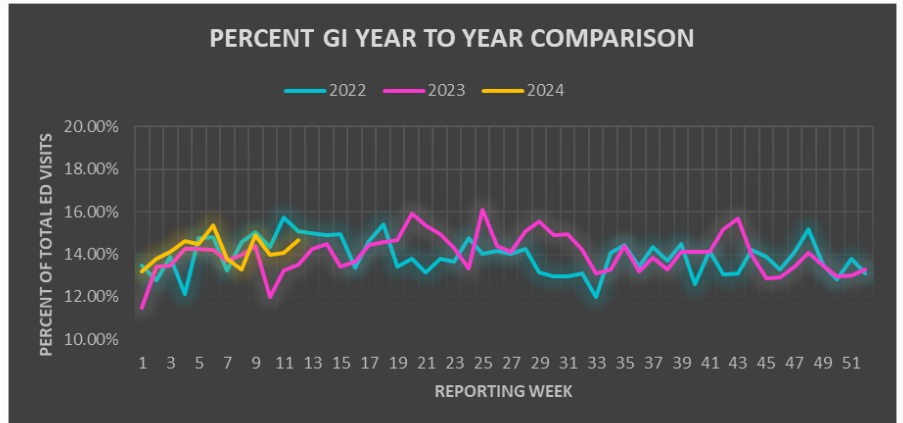
Week 12: March 17 - March 23

Gastro-intestinal Illness (GI)

Figure 4:

Annual comparison for the percent of GI for all Okaloosa County hospital ED visits week to week for 2022, 2023, and 2024.

Data Source: ESSENCE

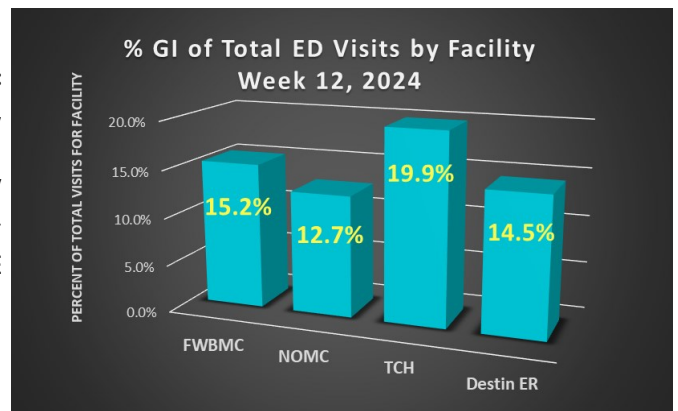


% GI by Age Group Week 12, 2024			
Age Range	GI Visits	Total ED Visits	% Total GI Visits
0-4	26	170	15.29%
5-19	43	222	19.37%
20-34	103	545	18.90%
35-54	95	579	16.41%
55-74	64	588	10.88%
75+	30	351	8.55%

Figure 5:

Hospital emergency room visits due to GI illness stratified by facility.

Data source: ESSENCE

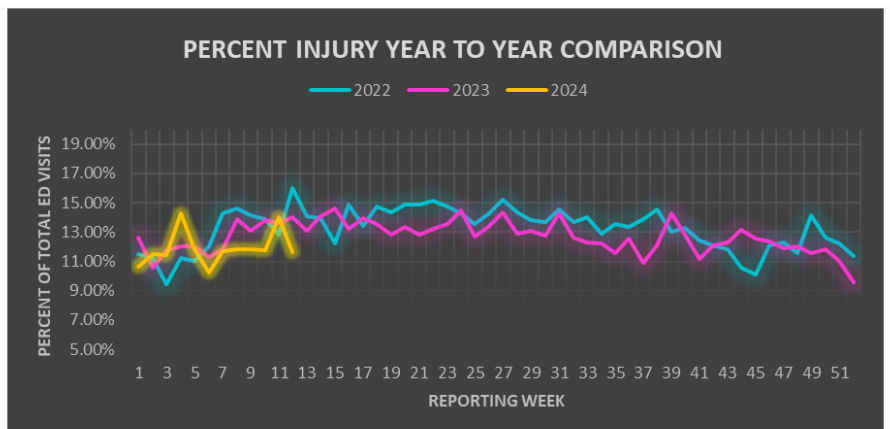


Injury

Figure 6:

Annual comparison for the percent of Injury for all Okaloosa County hospital ED visits week to week for 2021, 2022, and 2023.

Data Source: ESSENCE

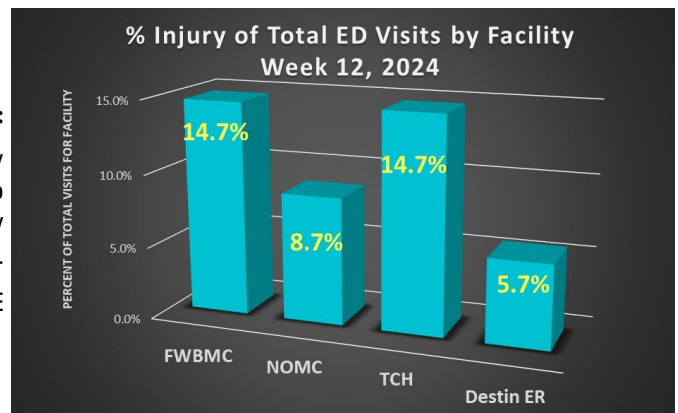


% Injury by Age Group Week 12, 2024			
Age Range	Injury Visits	Total ED Visits	% Total Injury Visits
0-4	14	170	8.24%
5-19	18	222	8.11%
20-34	55	545	10.09%
35-54	51	579	8.81%
55-74	84	588	14.29%
75+	64	351	18.23%

Figure 7:

Hospital emergency room visits due to Injury stratified by facility.

Data source: ESSENCE





Syndromic Surveillance

Week 12: March 17 - March 23

Total ED Visits by Syndrome

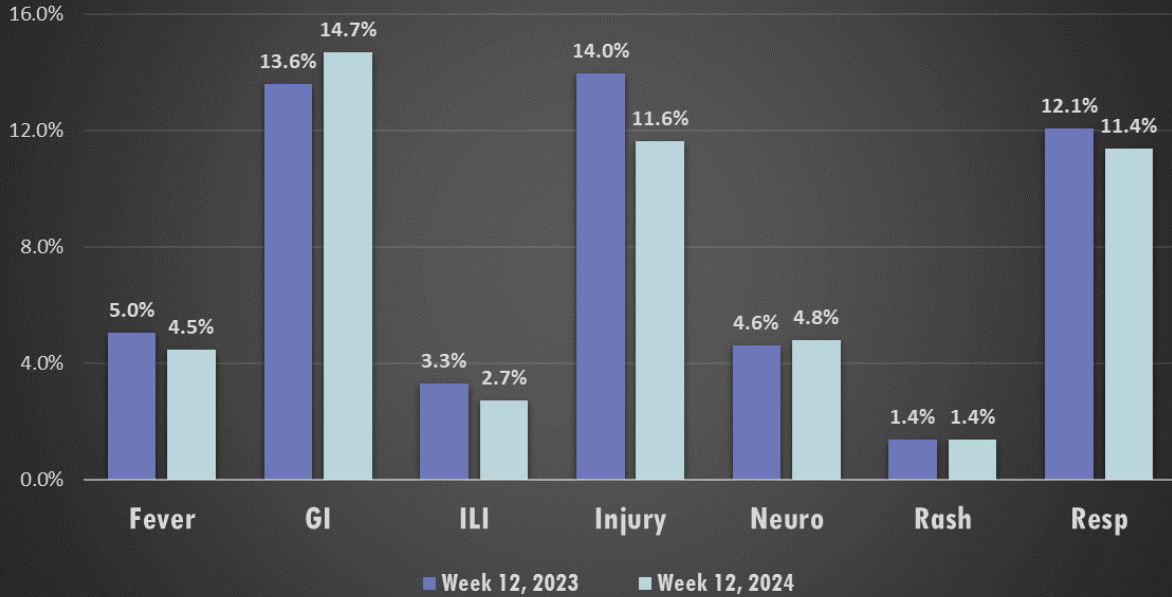
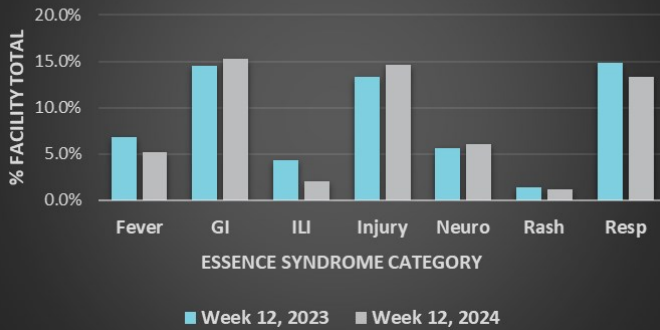


Figure 8: Hospital Emergency Department (ED) visits from 2024 Week 12 by select syndrome category. Percentages calculated based on total number of ED visits (n=2460). Some syndrome categories are not represented; therefore, represented percentages will not total 100%. Data source: ESSENCE

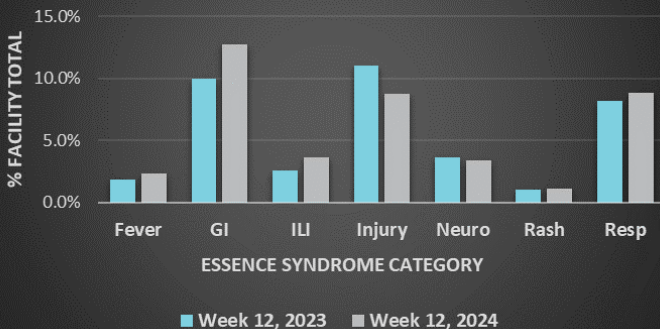
Fort Walton Beach Medical Center ED Presentations



Week 12 - Fort Walton Beach Medical Center

Age Range	Top Syndrome	Total ED Visits for Syndrome
0-4	RESP	25
5-19	GI	19
20-34	GI	41
35-54	GI	38
55-74	INJURY, RESP	34, 34
75+	INJURY	30

North Okaloosa Medical Center ED Presentations



Week 12 - North Okaloosa Medical Center

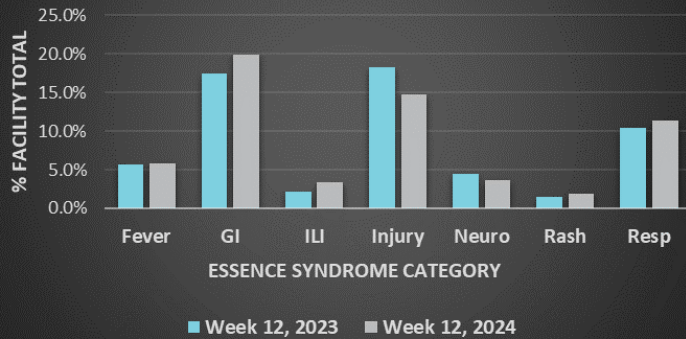
Age Range	Top Syndrome	Total ED Visits for Syndrome
0-4	RESP	12
5-19	GI	12
20-34	GI	35
35-54	GI	28
55-74	INJURY	33
75+	INJURY	14



Syndromic Surveillance

Week 12: March 17 - March 23

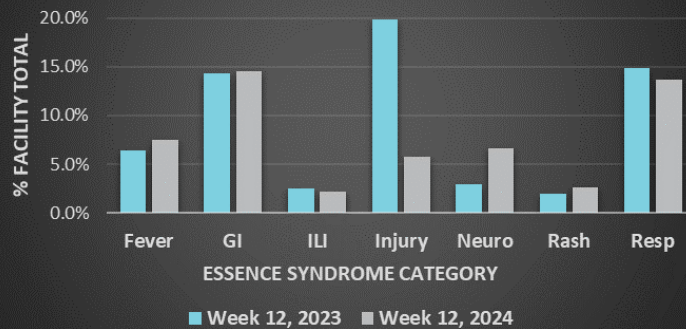
Twin Cities Hospital ED Presentations



Week 12 - Twin Cities Hospital

Age Range	Top Syndrome	Total ED Visits for Syndrome
0-4	FEVER	5
5-19	GI	5
20-34	GI	13
35-54	GI	23
55-74	GI, INJURY	14, 14
75+	INJURY	17

Destin ER ED Presentations



Week 12 - Destin ER

Age Range	Top Syndrome	Total ED Visits for Syndrome
0-4	FEVER	2
5-19	GI	7
20-34	GI	14
35-54	GI	6
55-74	RESP	9
75+	INJURY, NEURO, RESP	3,3,3

Week 12 - Okaloosa County

Age Group	Top Syndrome
0-4	RESP
5-19	GI
20-34	GI
35-54	GI
55-74	INJURY
75+	INJURY



Data Source: ESSENCE