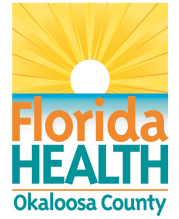


Weekly Disease Surveillance Report



2024 Reporting Week 14: March 31 — April 6

This weekly report is produced by the DOH-Okaloosa Epidemiology Section to provide situational awareness to community partners. Data is subject to change as additional information is gathered.

CDC Health Advisory

Highly Pathogenic Avian Influenza A(H5N1) Virus: Identification of Human Infection and Recommendations for Investigations and Response

The Centers for Disease Control and Prevention (CDC) has issued a Health Alert Network (HAN) [Health Advisory](#) to inform clinicians and public health officials of a recently confirmed human infection with highly pathogenic avian influenza (HPAI) A(H5N1). This case has occurred in Texas following exposure to presumably infected dairy cattle. No additional cases of human infection associated with the current infections in dairy cattle and birds in the US and no human-to-human transmission of HPAI A(H5N1) virus have been identified.

Unprotected exposure to any infected animal or to an environment in which infected birds or other animals are or have been present can pose a risk of infection. For more information and guidance on how to prevent, monitor, and conduct investigations of potential human infections of HPAI A(H5N1), please visit [CDC HPAI Interim Recommendations](#). Clinicians may access guidance for patients exposed to avian influenza at [CDC For Clinicians: Evaluating and Managing Patients](#).

ILI Trends

Influenza-like illness (ILI) in Okaloosa continued to decrease during Week 14 and matches the previous year's level (current level: 2.78%; last year: 2.19%). Please stay vigilant, promote vaccination, and visit the weekly [Florida FLU REVIEW](#).

COVID-19 Trends

COVID-19 hospital admission levels for Okaloosa County remained LOW for Week 14. For more information on the recommended actions based on the current levels, please visit the [CDC COVID-19 by County](#) webpage.

Contact Us:

Florida Department of Health
in Okaloosa County

Epidemiology Section

24/7 Disease Reporting:
850-833-9065

Confidential Fax:
850-833-7577

okaloosaepi@flhealth.gov

COVID-19 Corner

Week 14 Hospital Admission Level

COVID-19 Hospital Admissions Level	New Hospital Admissions per 100K Population per Week
LOW	3.7

PREVIOUS WEEK LEVEL: LOW

The Community Level has been retired with the end of the federal COVID-19 Public Health Emergency (PHE).

HIGH	≥ 20.0
MEDIUM	10.0 - 19.9
LOW	<10.0

As a replacement, COVID-19 Hospital Admission Level will be used as an indicator for recommended interventions in the community based on each level and individual or community focus.

For more information on the levels and recommended actions based on the current level, please visit the [CDC COVID-19 by County](#) webpage.

In the Know: Measles in the US

As of April 4, 2024, a total of 113 measles cases were reported by 18 jurisdictions: Arizona, California, Florida, Georgia, Illinois, Indiana, Louisiana, Maryland, Michigan, Minnesota, Missouri, New Jersey, New York City, New York State, Ohio, Pennsylvania, Virginia, and Washington.

Because measles is highly contagious, the Florida Department of Health is providing this [linked information](#) to health care providers regarding the identification, testing, and management of suspected cases.

If you suspect measles in a patient with a febrile rash illness, please contact DOH-Okaloosa at 850-833-9065 (or your local [county health department](#)) **immediately** and review the linked information mentioned above. Suspected measles cases are required to be reported immediately to ensure prompt response and public health efforts.

For the latest information about measles, please visit the [CDC Measles For Healthcare Providers](#) resource.



Influenza-Like Illness

Week 14: March 31 - April 6

Influenza-like Illness (ILI) is defined as fever greater than or equal to 100°F AND cough and/or sore throat in the absence of another known cause.

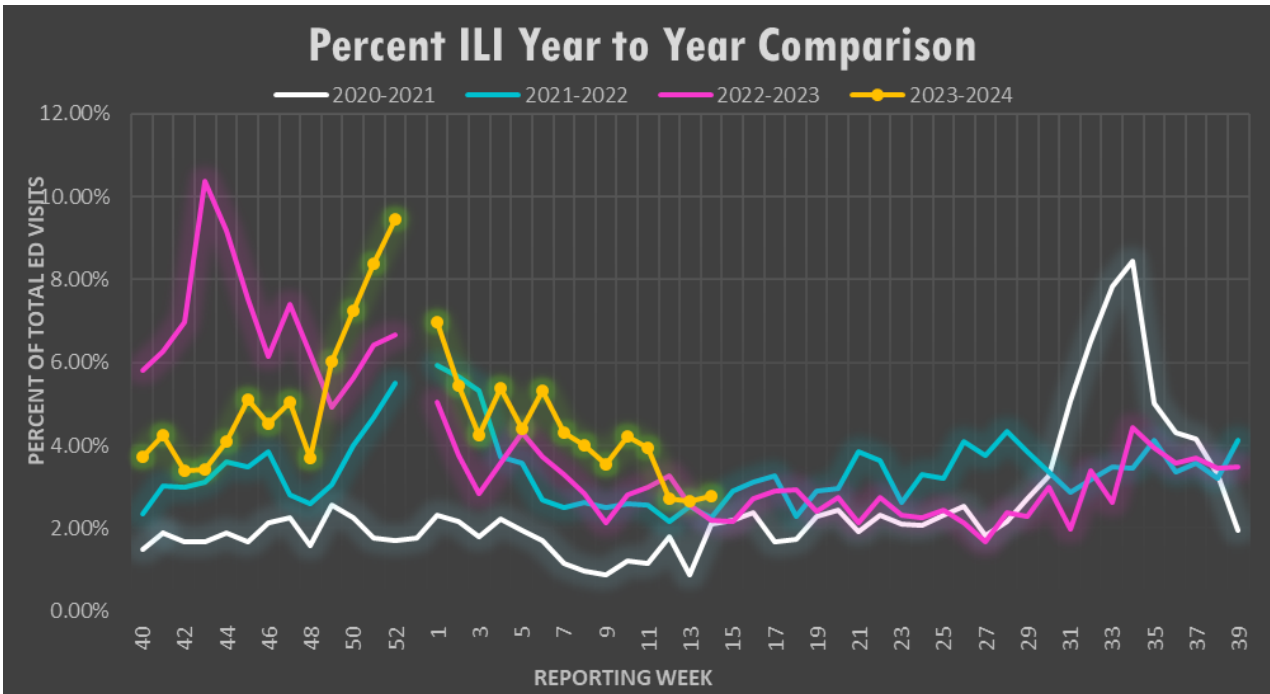


Figure 2: Annual comparison of the percent of all hospital ED visits due to ILI for Okaloosa county for the 2020-21, 2021-22, 2022-23 and 2023-2024 influenza seasons by week. Data source: ESSENCE

ANALYSIS: During Week 14, flu reporting partners and ESSENCE (a syndromic surveillance system) reported a plateau in ILI activity for Okaloosa County. The percentage of ILI ED visits in Okaloosa County increased this week (2.66% during Week 13 to 2.78% during Week 14). Flu partners reported 8 positive rapid flu tests this week (6 Influenza A and 2 Influenza B). Over the past three weeks, no influenza specimens submitted to the state lab were positive. There were no ILI admissions or deaths reported by flu partners this week. No outbreaks have been reported in the past 3 weeks. The percentage of total ILI ED visits for Week 14 is higher than that of Week 14 last year.
Note: Other respiratory syndromes can be represented by increased ILI case numbers.
 Data Source: ESSENCE

% ILI by Age Group Week 14, 2024			
Age Range	ILI Visits	Total ED Visits	% Total ILI Visits
0-4	23	180	12.78%
5-19	16	389	4.11%
20-34	12	545	2.20%
35-54	11	604	1.82%
55-74	6	602	1.00%
75+	5	308	1.62%

Data Source: ESSENCE

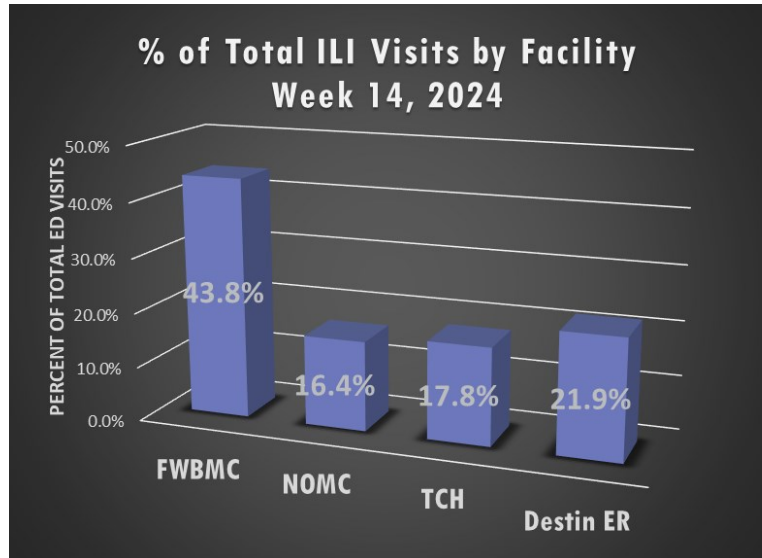


Figure 3: Hospital ED visits meeting ILI criteria stratified by facility. Percentages calculated based on total number of ILI ED visits. (n=73). Data source: ESSENCE



Syndromic Surveillance

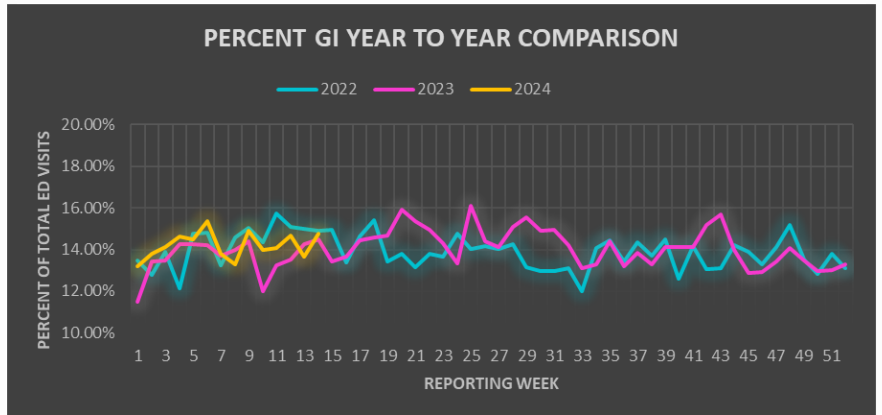
Week 14: March 31— April 6

Gastro-intestinal Illness (GI)

Figure 4:

Annual comparison for the percent of GI for all Okaloosa County hospital ED visits week to week for 2022, 2023, and 2024.

Data Source: ESSENCE

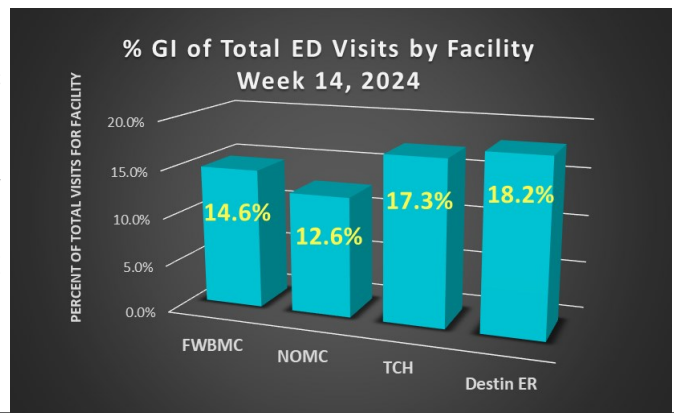


% GI by Age Group Week 14, 2024			
Age Range	GI Visits	Total ED Visits	% Total GI Visits
0-4	28	180	15.56%
5-19	66	389	16.97%
20-34	98	545	17.98%
35-54	103	604	17.05%
55-74	63	602	10.47%
75+	30	308	9.74%

Figure 5:

Hospital emergency room visits due to GI illness stratified by facility.

Data source: ESSENCE

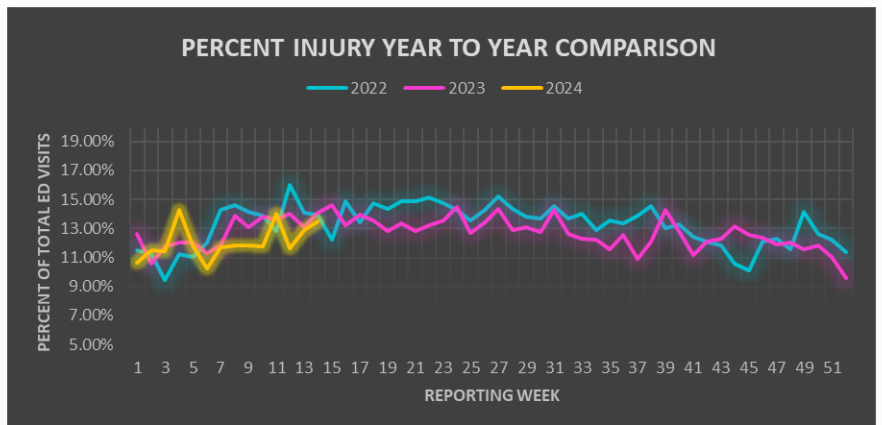


Injury

Figure 6:

Annual comparison for the percent of Injury for all Okaloosa County hospital ED visits week to week for 2021, 2022, and 2023.

Data Source: ESSENCE

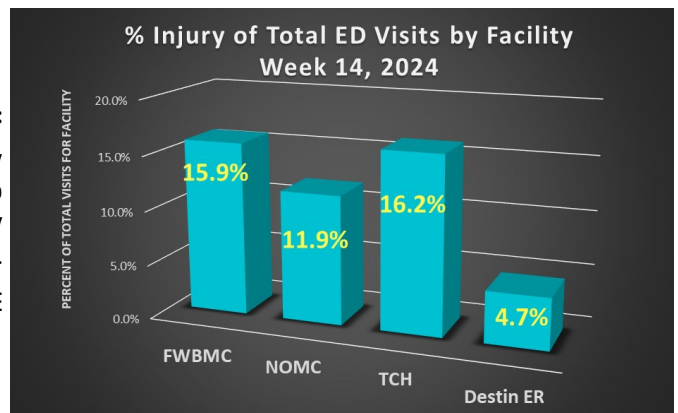


% Injury by Age Group Week 14, 2024			
Age Range	Injury Visits	Total ED Visits	% Total Injury Visits
0-4	21	180	11.67%
5-19	66	389	16.97%
20-34	62	545	11.38%
35-54	83	604	13.74%
55-74	66	602	10.96%
75+	57	308	18.51%

Figure 7:

Hospital emergency room visits due to Injury stratified by facility.

Data source: ESSENCE





Syndromic Surveillance

Week 14: March 31 - April 6

Total ED Visits by Syndrome

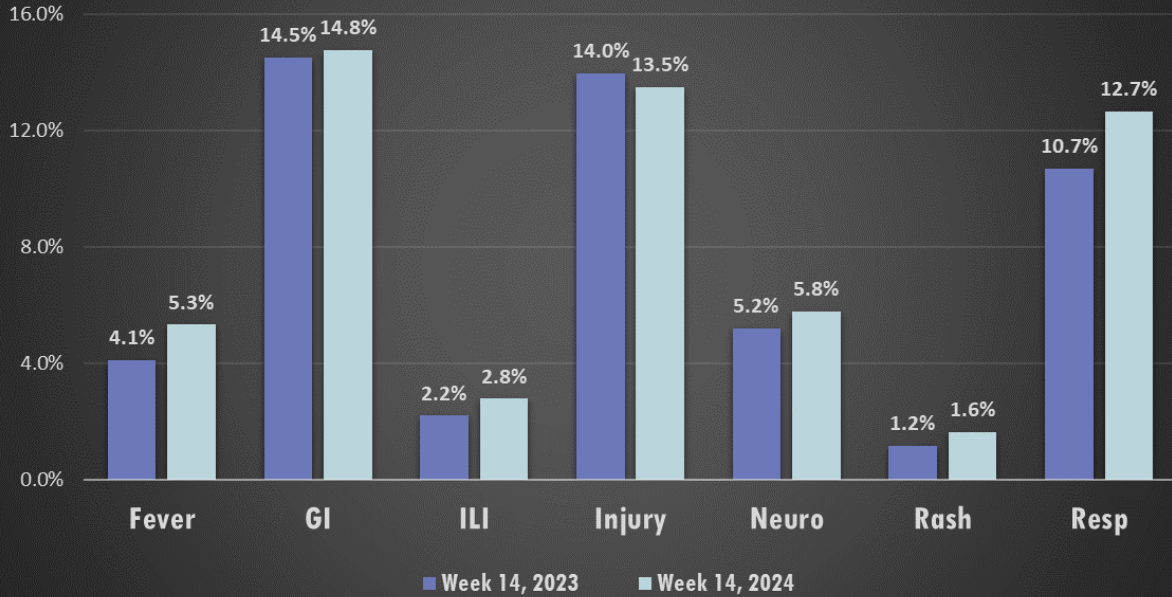
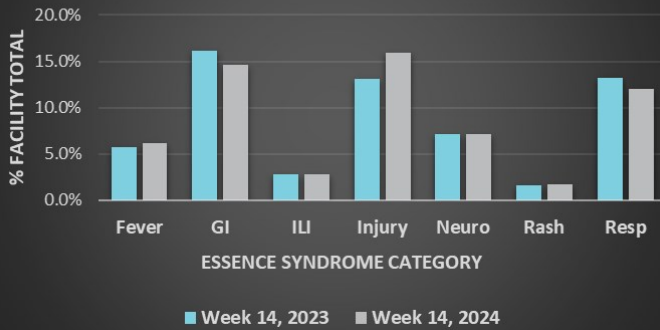


Figure 8: Hospital Emergency Department (ED) visits from 2024 Week 14 by select syndrome category. Percentages calculated based on total number of ED visits (n= 2630). Some syndrome categories are not represented; therefore, represented percentages will not total 100%. Data source: ESSENCE

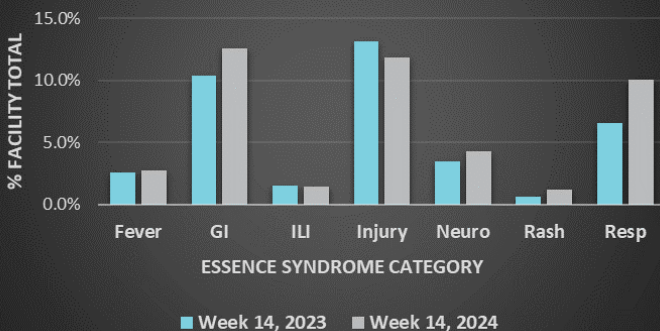
Fort Walton Beach Medical Center ED Presentations



Week 14 - Fort Walton Beach Medical Center

Age Range	Top Syndrome	Total ED Visits for Syndrome
0-4	RESP	25
5-19	INJURY	32
20-34	INJURY	39
35-54	INJURY	45
55-74	GI	32
75+	INJURY	34

North Okaloosa Medical Center ED Presentations



Week 14 - North Okaloosa Medical Center

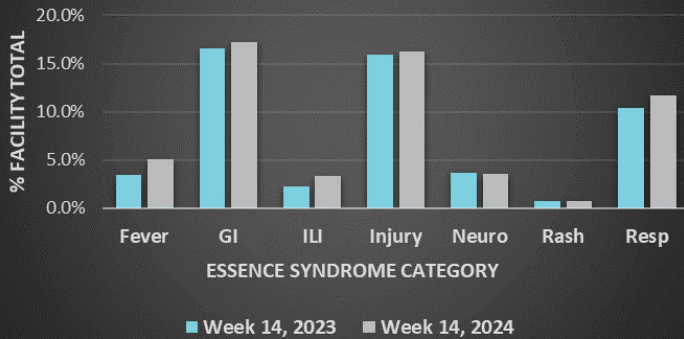
Age Range	Top Syndrome	Total ED Visits for Syndrome
0-4	RESP	13
5-19	INJURY	20
20-34	GI	31
35-54	GI	37
55-74	RESP	24
75+	INJURY	12



Syndromic Surveillance

Week 14: March 31 - April 6

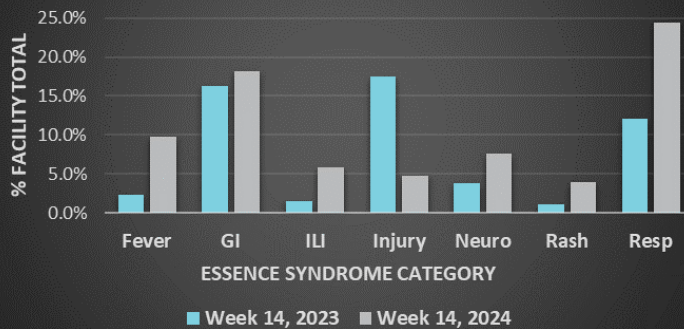
Twin Cities Hospital ED Presentations



Week 14 - Twin Cities Hospital

Age Range	Top Syndrome	Total ED Visits for Syndrome
0-4	FEVER	6
5-19	GI, INJURY	13, 13
20-34	GI	16
35-54	GI	13
55-74	INJURY	19
75+	GI	10

Destin ER ED Presentations



Week 14 - Destin ER

Age Range	Top Syndrome	Total ED Visits for Syndrome
0-4	RESP	13
5-19	RESP	19
20-34	GI	14
35-54	GI	10
55-74	RESP	13
75+	GI	4

Week 14 - Okaloosa County

Age Group	Top Syndrome
0-4	RESP
5-19	GI, INJURY
20-34	GI
35-54	GI
55-74	RESP
75+	INJURY



Data Source: ESSENCE