

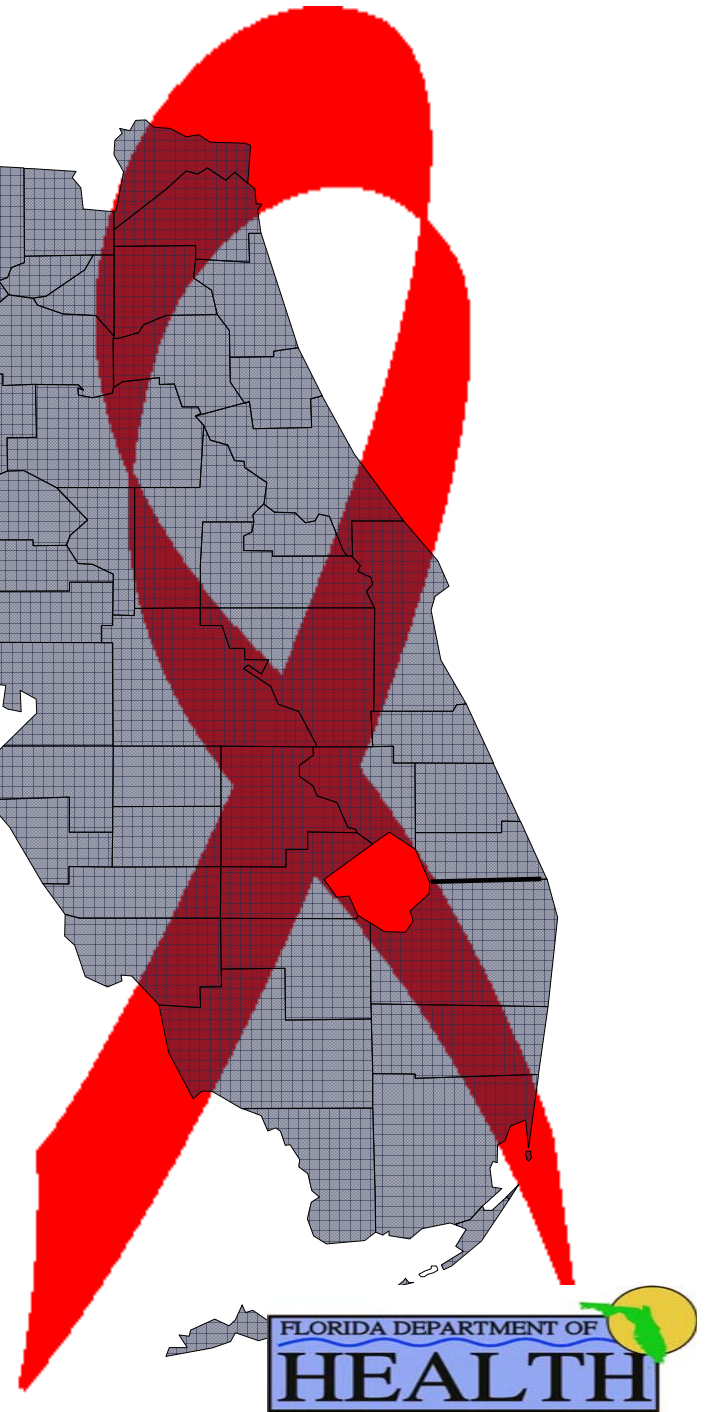
HIV and AIDS

Among those 50 and Older

Florida, 2010



Annual data as of 12/31/2010, Living data as of 05/26/2011

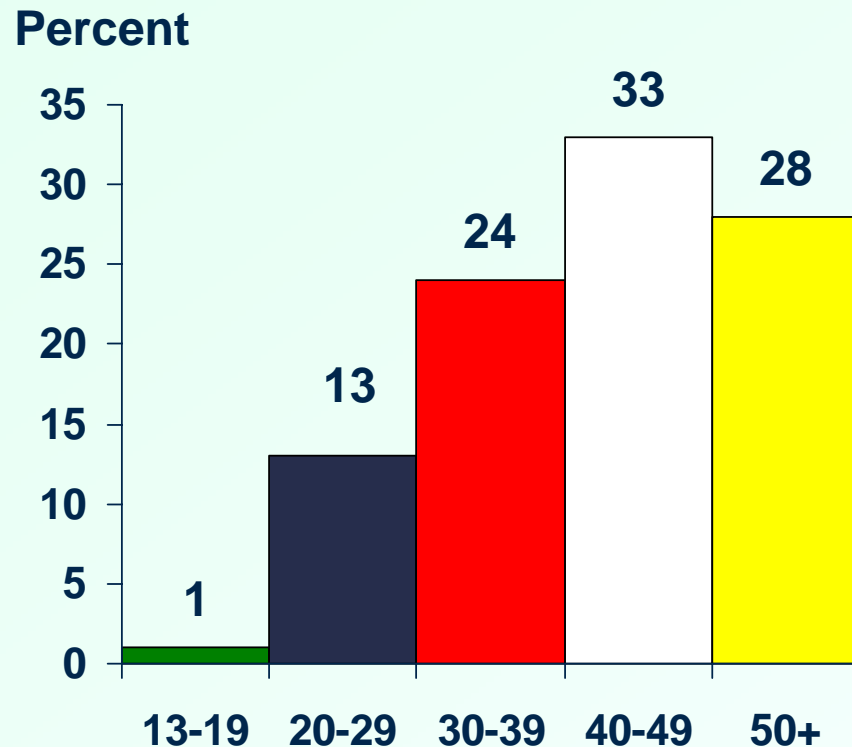


HIV Case Reporting

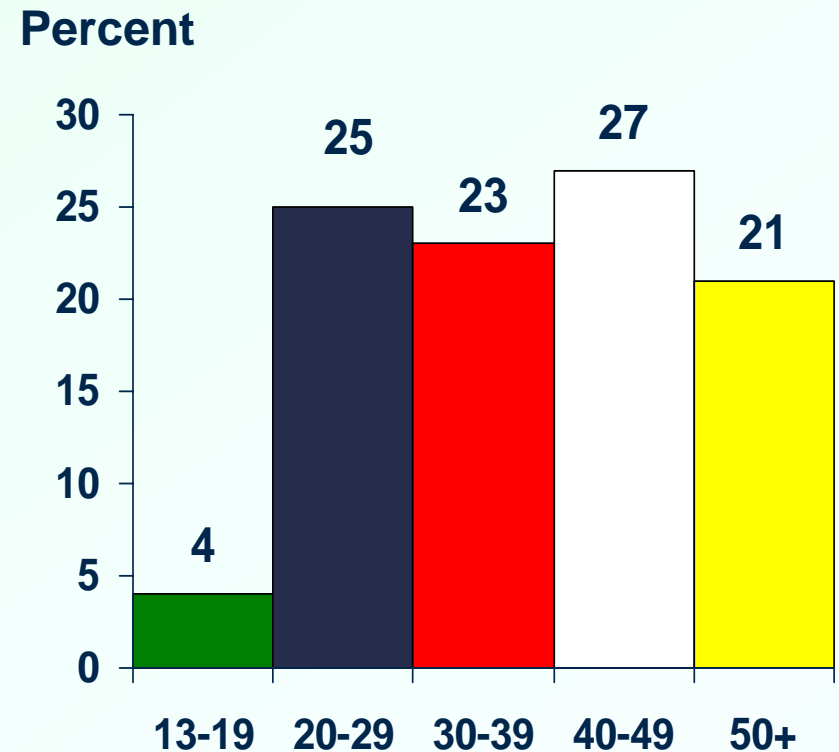
- ⓧ Reflects good demographic information
- ⓧ Tends to represent more recent infections
- ⓧ *Now includes all reported HIV cases regardless of AIDS status*
- ⓧ No retroactive reporting prior to July 1997
- ⓧ Patients are tested on a self-selected basis
- ⓧ Anonymous tests are not reported
- ⓧ Data represents a minimum estimate of HIV prevalence

Percent of Adult Cases By Age Group at Diagnosis, Florida, 2010

AIDS (N=3,459)



HIV (N=5,187)



According to the 2010 Florida population estimates, persons age 50 and over represent 24% (N=4,433,270) of the total population (N=18,788,794). In 2010, persons age 50 plus accounted for 28% of all reported AIDS cases, and 19% of all HIV cases.

Annual Percent of Reported AIDS Cases By Age Group at Diagnosis, Florida, 2001-2010

Year	Age 13-39		Age 40-49		Age 50+		Total	
	Cases	% Total	Cases	% Total	Cases	% Total	Cases	% Total
2001	2,288	50.0%	1,521	33.3%	764	16.7%	4,573	100%
2002	2,204	47.8%	1,500	32.5%	910	19.7%	4,614	100%
2003	2,019	146.8%	1,543	112.2%	813	59.1%	1,375	100%
2004	2,332	43.6%	1,902	35.5%	1,120	20.9%	5,354	100%
2005	1,818	39.1%	1,729	37.2%	1,005	21.6%	4,652	100%
2006	2,035	41.8%	1,789	36.8%	1,041	21.4%	4,865	100%
2007	1,524	41.2%	1,297	35.0%	882	23.8%	3,703	100%
2008	1,874	40.0%	1,620	34.6%	1,194	25.5%	4,688	100%
2009	1,720	41.2%	1,396	33.4%	1,060	25.4%	4,176	100%
2010	1,321	38.2%	1,160	33.5%	978	28.3%	3,459	100%

Newly reported AIDS cases among persons age 50 and over increased by 28% from 2001 (17% of total) to 2010 (28% of total). In contrast, newly reported cases among persons age 13-39 and age 40-49 each decreased over this same time period, 42% and 24% respectively.

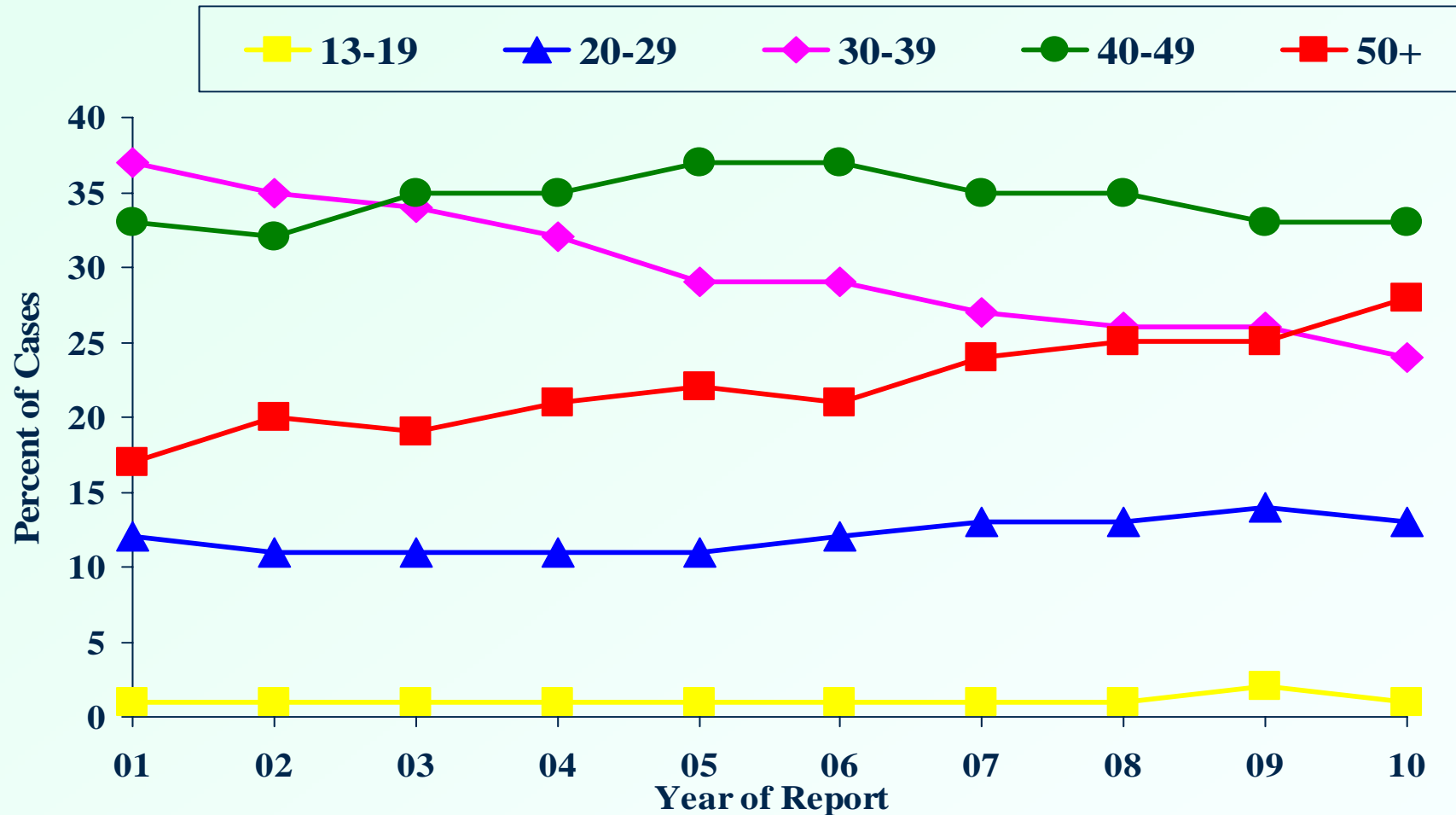


Annual Percent of Reported HIV Cases By Age Group at Diagnosis, Florida, 2001-2010

Year	Age 13-39		Age 40-49		Age 50+		Total	
	Cases	% Total	Cases	% Total	Cases	% Total	Cases	% Total
2001	3,566	61.6%	1,492	25.8%	733	12.7%	5,791	100%
2002	3,857	60.2%	1,731	27.0%	821	12.8%	6,409	100%
2003	3,592	60.0%	1,588	26.5%	811	13.5%	5,991	100%
2004	3,307	57.4%	1,624	28.2%	830	14.4%	5,761	100%
2005	2,980	57.0%	1,433	27.4%	814	15.6%	5,227	100%
2006	2,856	57.1%	1,425	28.5%	722	14.4%	5,003	100%
2007	3,083	55.1%	1,551	27.7%	966	17.3%	5,600	100%
2008	3,564	51.9%	1,995	29.1%	1,303	19.0%	6,862	100%
2009	2,698	53.9%	1,361	27.2%	943	18.9%	5,002	100%
2010	2,724	52.5%	1,385	26.7%	1,078	20.8%	5,187	100%

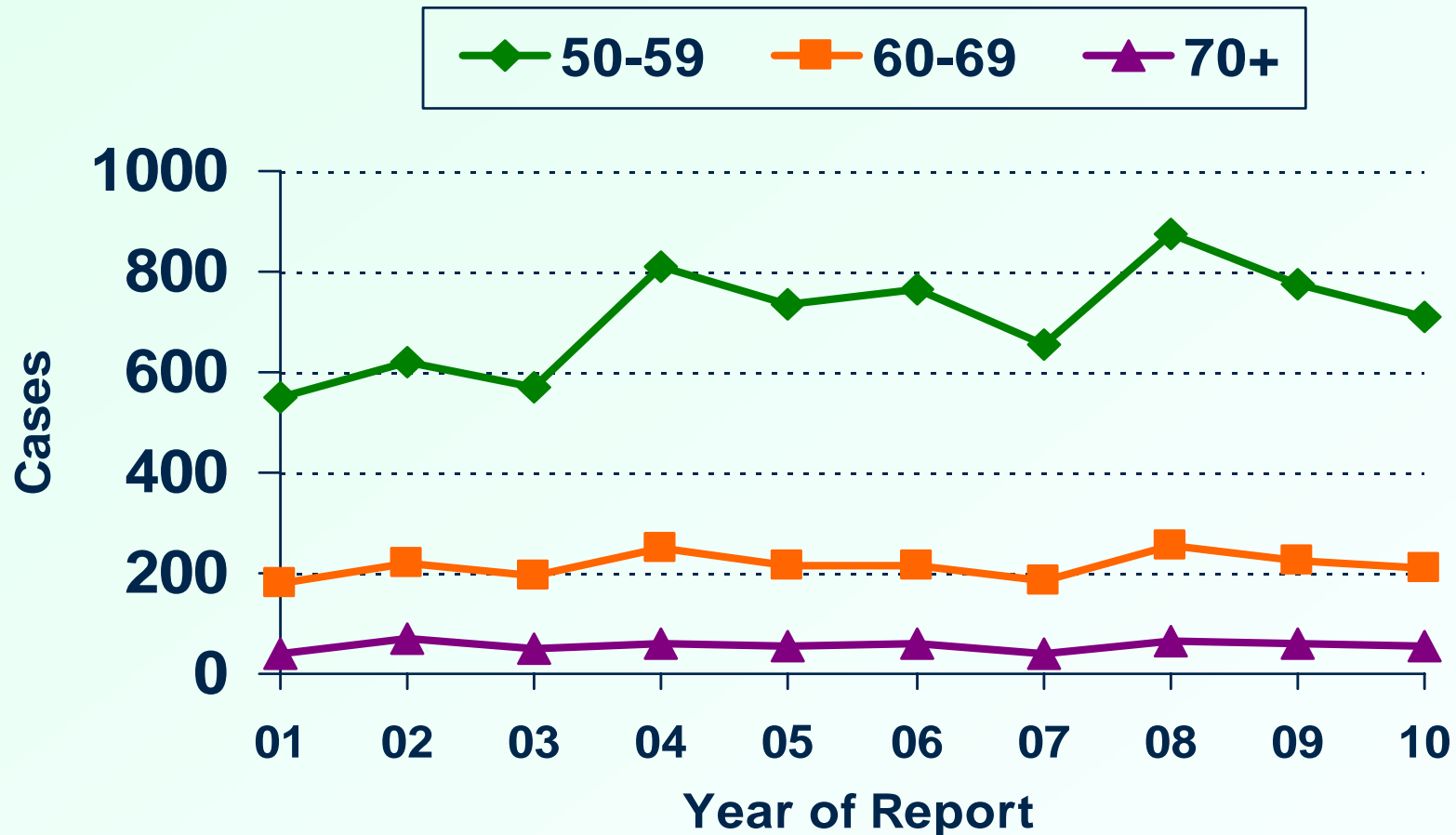
Newly reported HIV cases among persons age 50 and over increased by 47% from 2001 (13% of total to 2010 (21% of total). In contrast, newly reported cases among persons age 13-39 and age 40-49 each decreased over this same time period, 24% and 7% respectively.

Percent of AIDS Cases By Age of Diagnosis and Year of Report Florida, 2001 – 2010



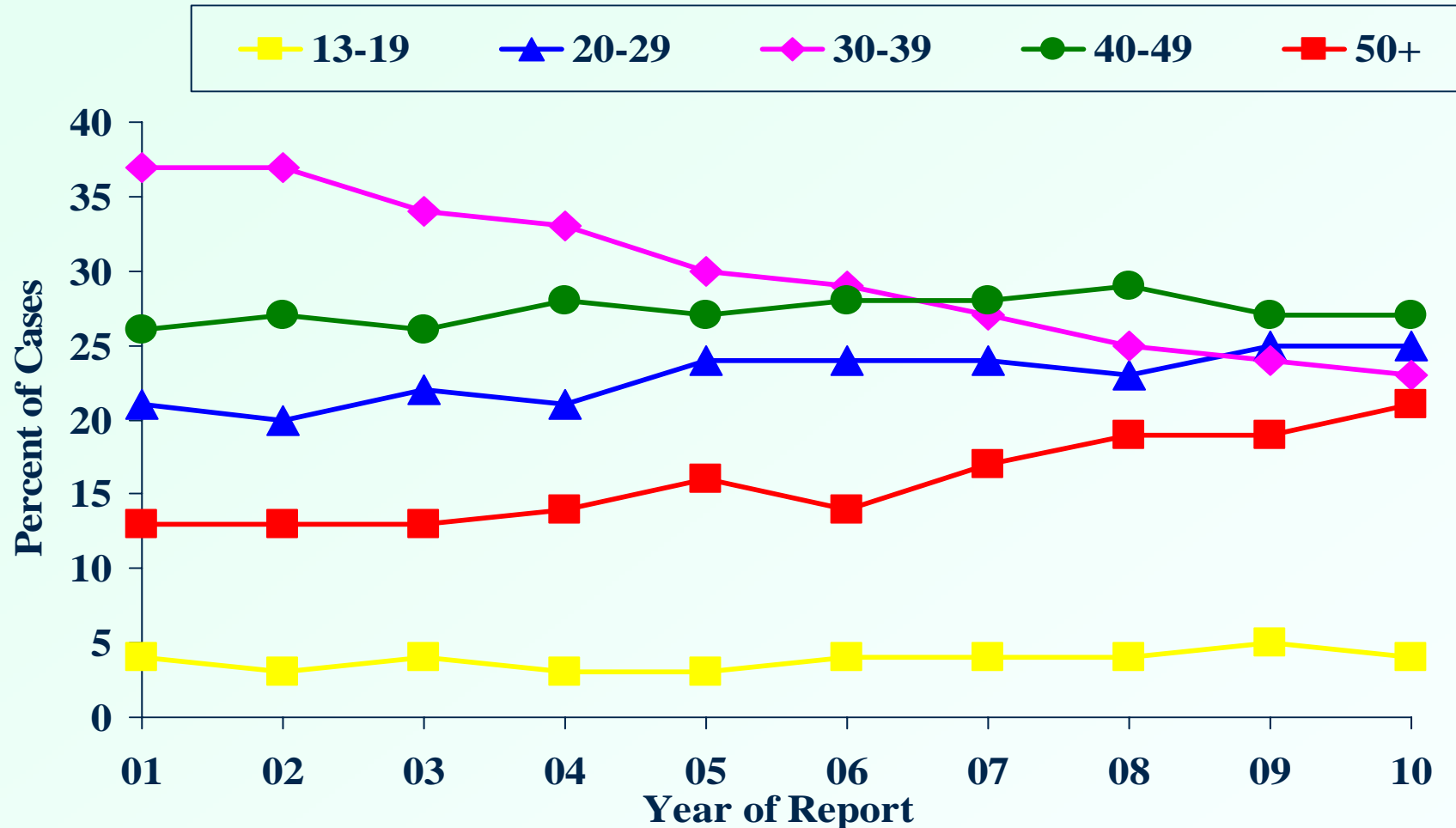
Over the past several years, the proportion of newly reported cases has shown increases for both the 20-29 and 50+ age groups. The age group 13-19 has remained level.

Reported AIDS Cases Among Persons Age 50+ By Age of Diagnosis and Year of Report Florida, 2001-2010



Over the past ten years, the number of newly diagnosed AIDS cases increased 29% for ages 50-59, 19% for ages 60-69 and 47% for ages 70+.

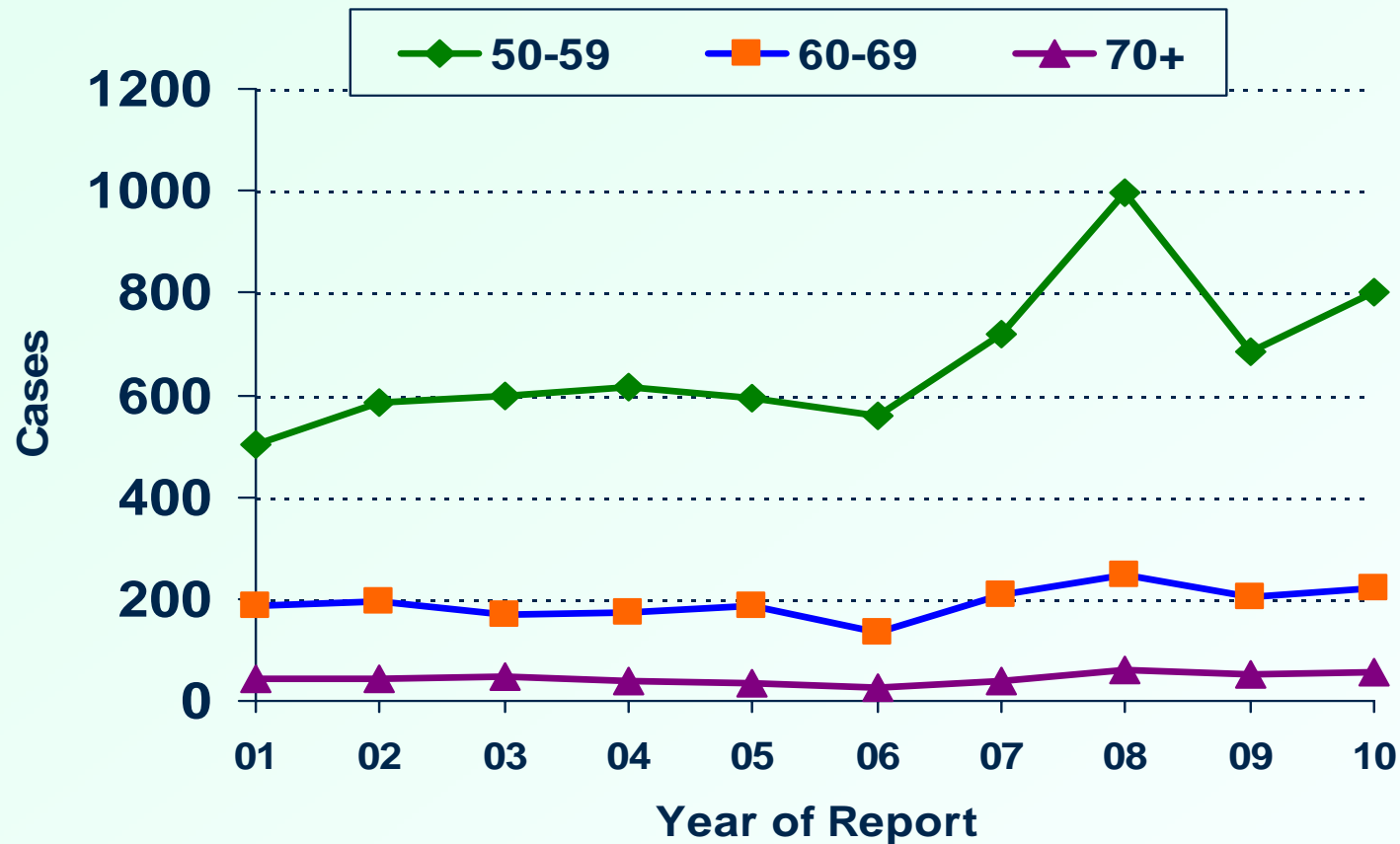
Percent of Adult HIV Cases By Age of Diagnosis and Year of Report Florida, 2001 – 2010



As with AIDS cases, over the past several years, the proportion of newly reported cases has shown increases for both the 20-29 and 50+ age groups. The age group 13-19 has remained level.

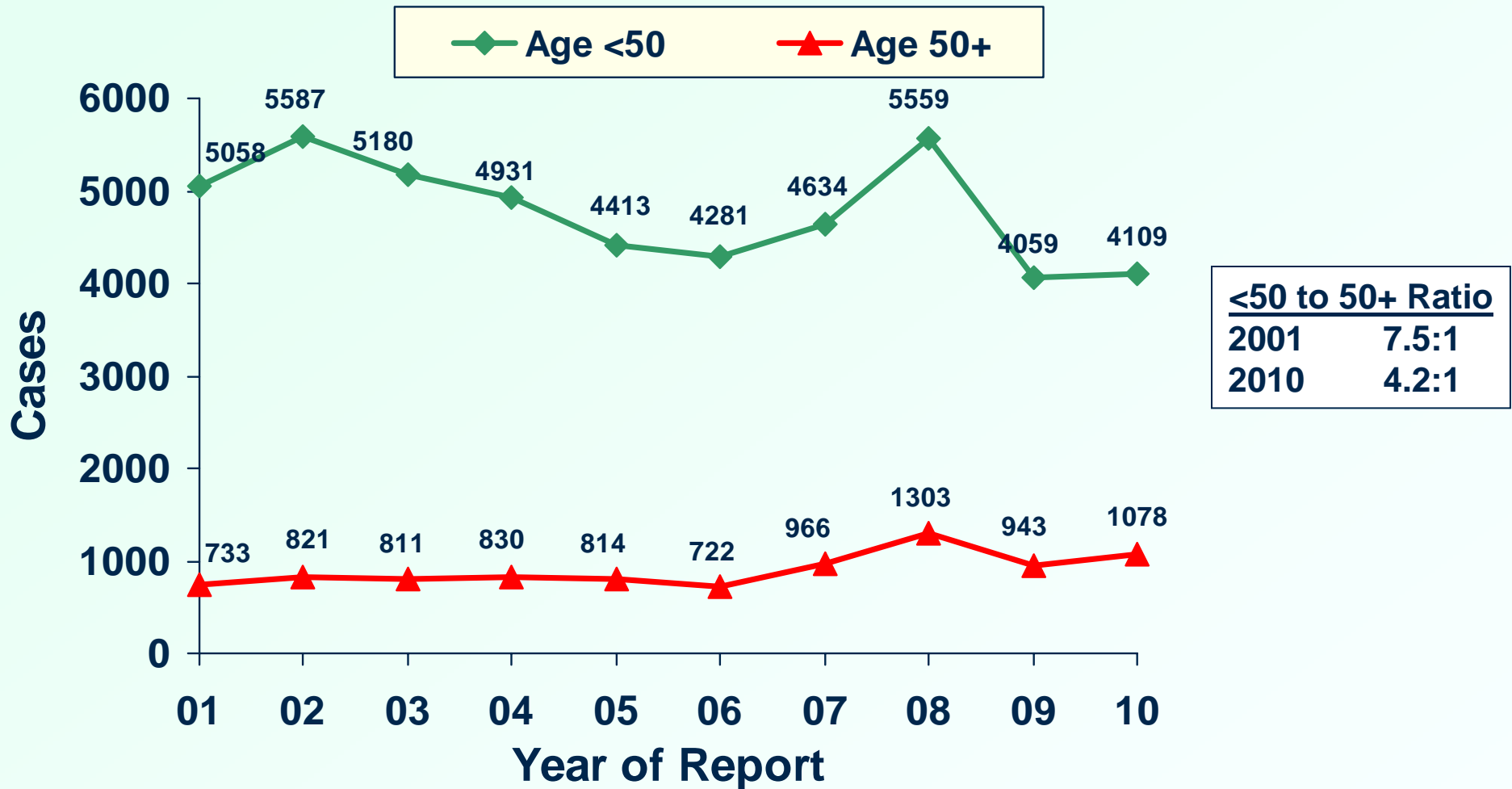


Reported HIV Cases Among Persons Age 50+ By Age of Diagnosis and Year of Report Florida, 2001-2010



Over the past ten years, the number of newly diagnosed HIV cases increased 59% for ages 50-59, 19% for ages 60-69 and 22% for ages 70+. Changes have caused fluctuations in HIV cases. For example, enhanced reporting laws were implemented in Nov. 2006, and the expansion of electronic lab reporting in 2007 led to an artificial peak in HIV cases in 2007 and 2008 followed by an artificial decrease in 2009.

Newly Reported HIV Cases By Age Group, Florida, 2001-2010



Comment: The relative increases in cases age 50+ reflect the changing face of the AIDS epidemic over time.



Misconceptions about HIV/AIDS Among Persons Age 50+

- HIV/AIDS in the United States is generally regarded as a young person's disease.
- HIV/AIDS heavily affects only those in young adulthood and early middle age.
- Persons over 50 are not at risk for HIV/AIDS.

SEX DOES NOT END AT 50

TRUTHS About HIV/AIDS Among Persons Age 50+

- Older persons with HIV/AIDS are more likely to live alone.
- Older persons with HIV/AIDS may be at higher risk for social isolation, including depression and social stigma.
- Older persons with HIV/AIDS are at increased risk for mortality.

Concerns about Persons Age 50+

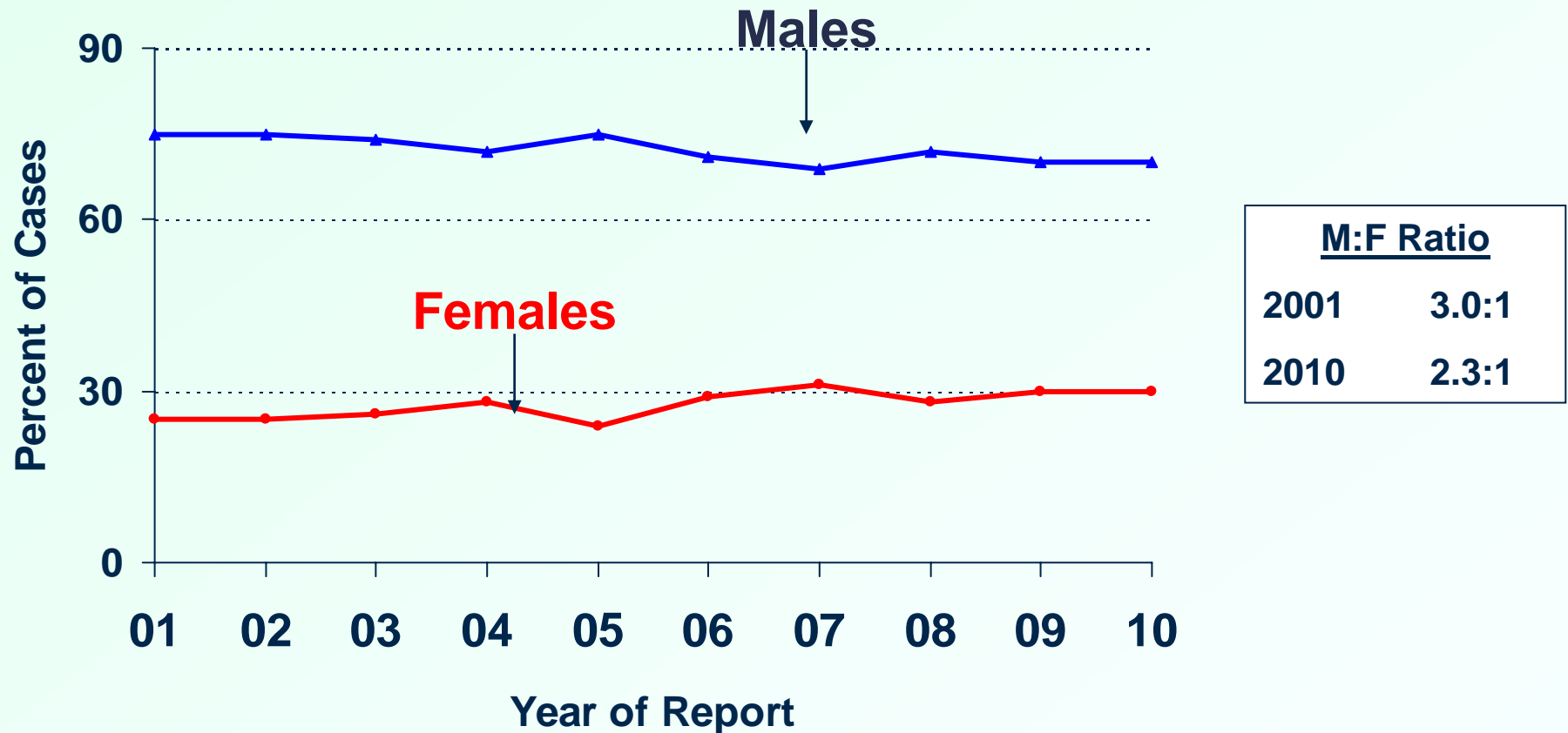
- Which demographic, social and illness factors influence the use of health and social services?



- What factors affect service use among older persons with HIV/AIDS?

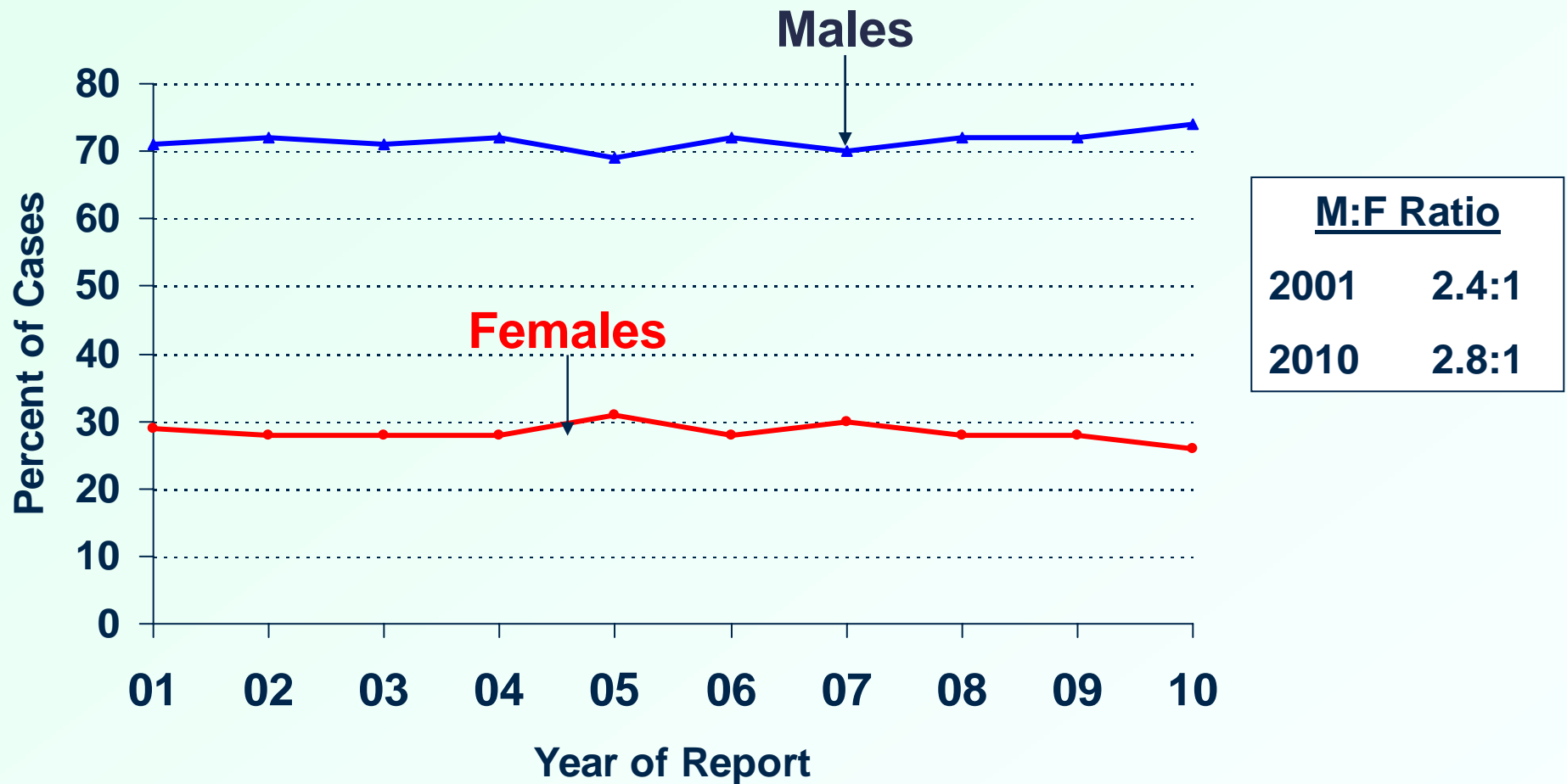
- How do older persons with HIV/AIDS utilize health and social services compared to their younger counterparts?

Percent of AIDS Cases Among Persons Age 50+, by Sex and Year of Report, Florida, 2001-2010



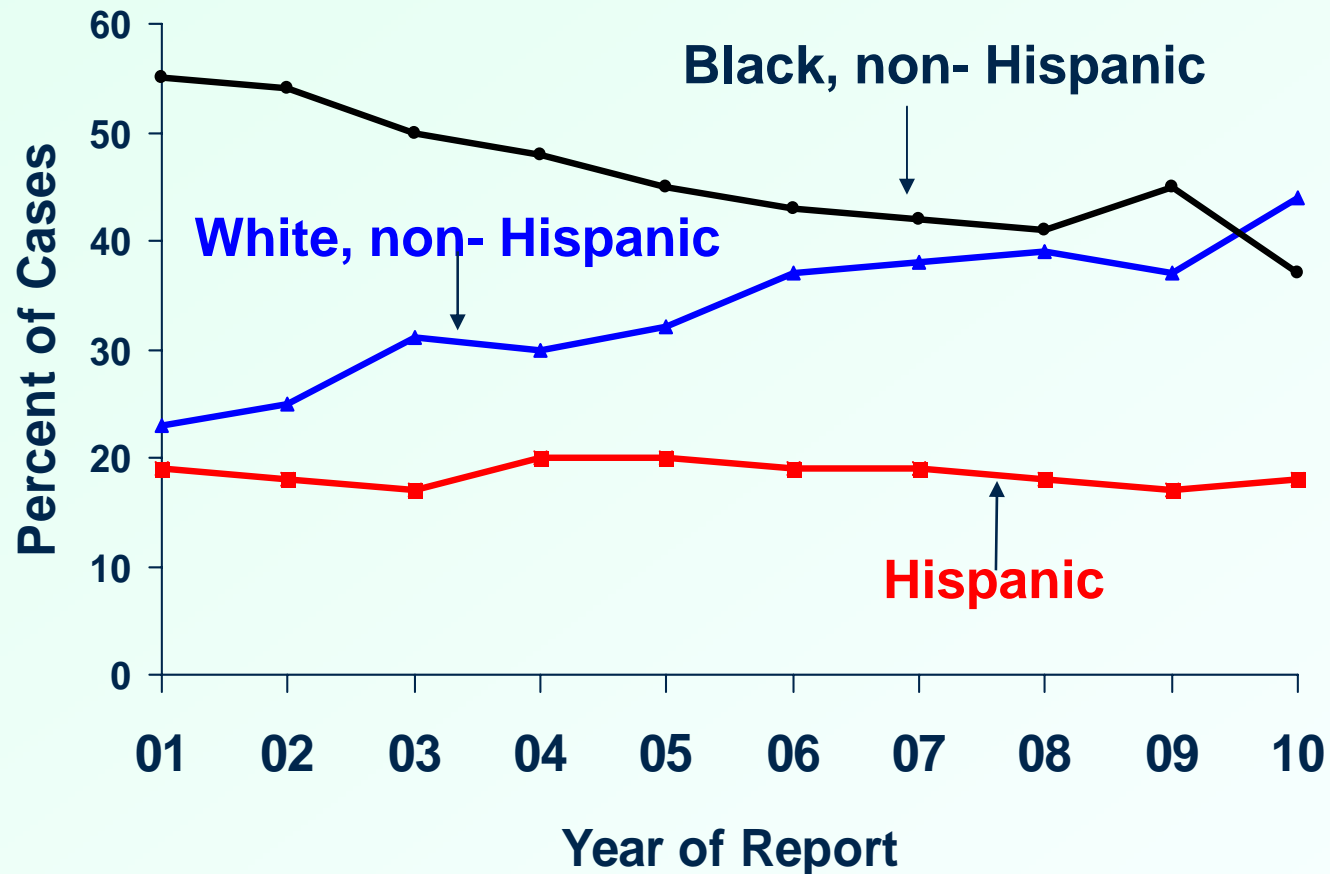
Over the past ten years, an average of 72% of newly reported AIDS cases among persons 50 and older were males. Although the annual trends have remained fairly level, the proportion of males to females decreased over the past few years, yielding a male to female ratio of 2.3:1 in 2010.

Percent of HIV Cases Among Persons Age 50+, by Sex and Year of Report, Florida, 2001-2010



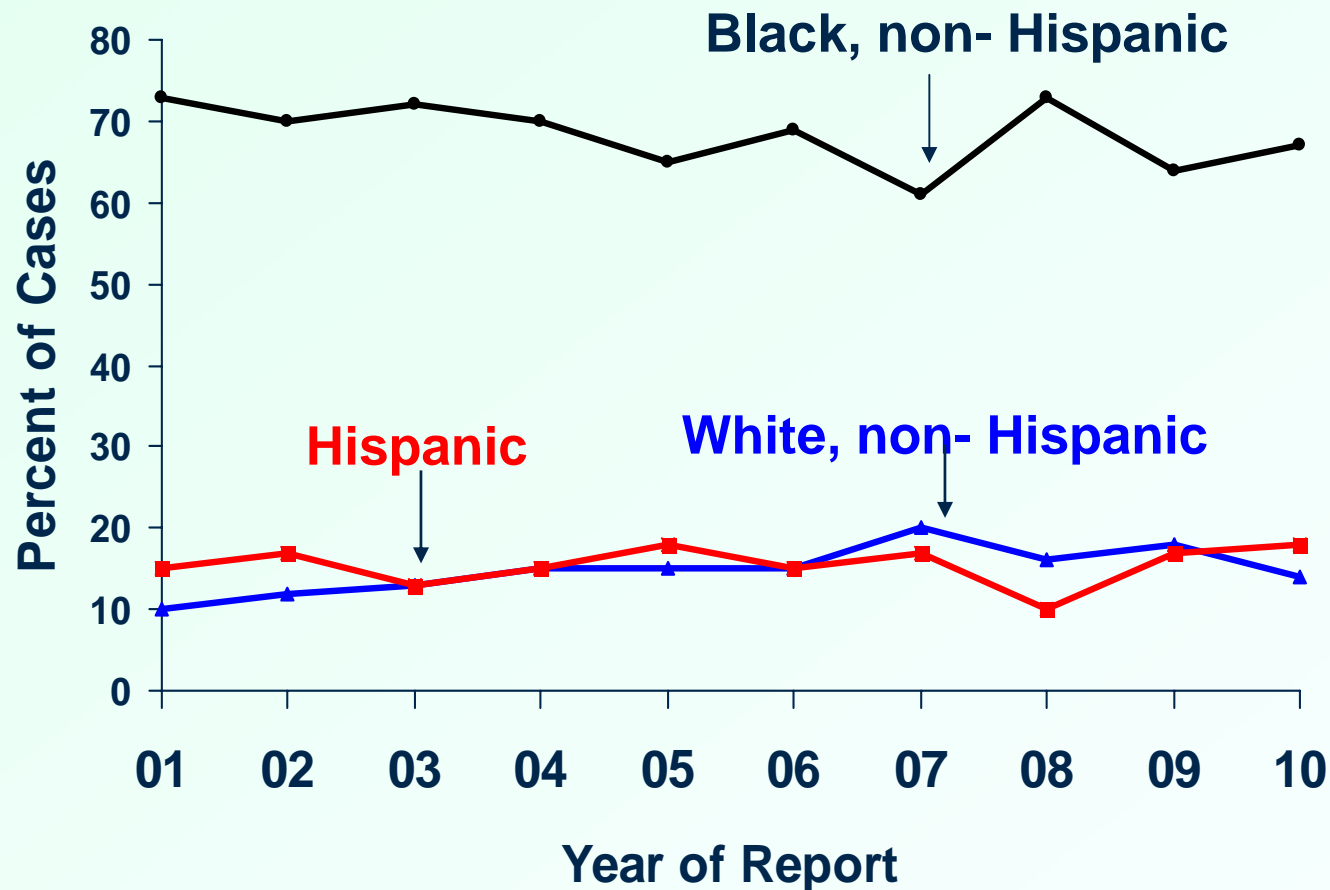
Over the past ten years, an average of 72% of newly reported HIV cases among persons 50 and older were males. Although the annual trends have remained fairly level, the proportion of males to females increased over the past few years, yielding a male to female ratio of 2.8:1 in 2010.

Percent of Male HIV Cases Among Persons Age 50+, by Race/Ethnicity and Year of Report, Florida, 2001-2010



The proportion of newly reported black male HIV cases ages 50 and over decreased from 55% in 2001 to 37% in 2010. In contrast, cases among whites increased from 23% to 44% and Hispanics remained fairly level during the same time period.

Percent of Female HIV Cases Among Persons Age 50+, by Race/Ethnicity and Year of Report, Florida, 2001-2010



The proportion of newly reported HIV cases among black females age 50 and over decreased from 73% in 2001 to 67% in 2010. White and Hispanic females have fluctuated throughout the years, ranging between 10-18 percent of the cases over the years.

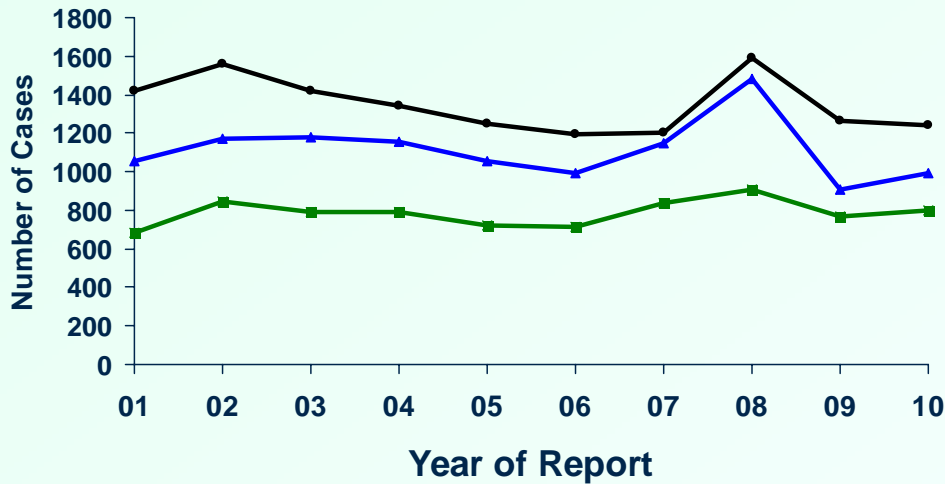
Number of Male HIV Cases By Age Group and Race/Ethnicity, Florida, 2001-2010

▲ White, non Hispanic

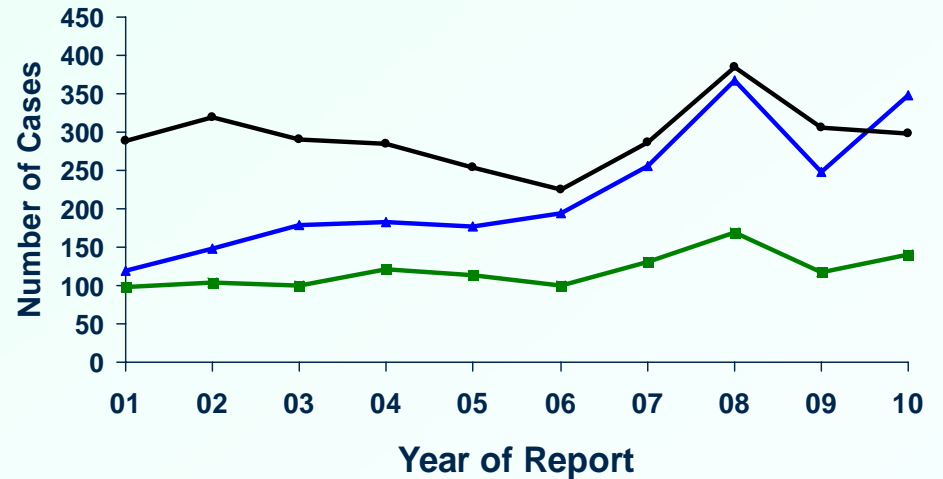
● Black, non-Hispanic

■ Hispanic

Less than 50 years



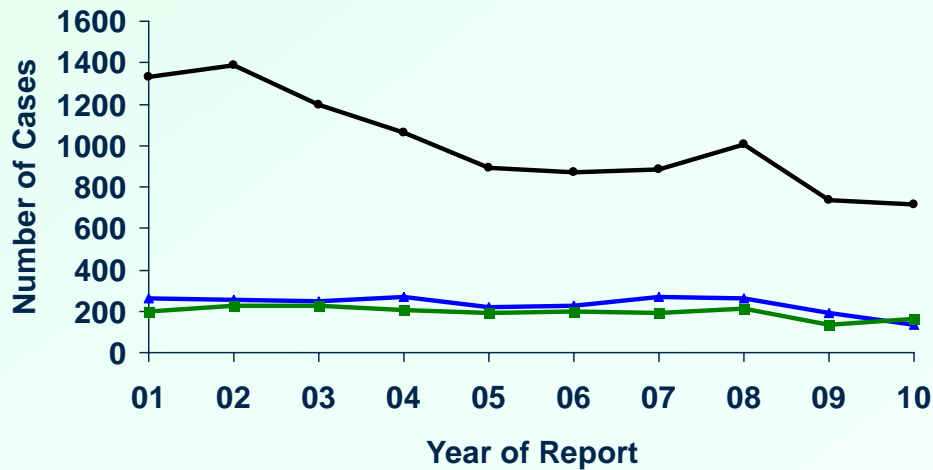
50+ years



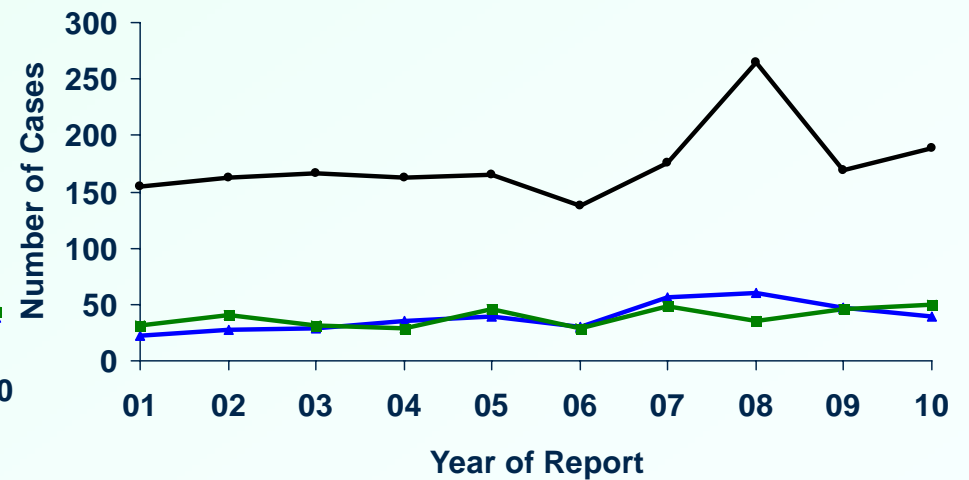
Number of Female HIV Cases By Age Group and Race/Ethnicity, Florida, 2001-2010

▲ White, non Hispanic
 ● Black, non-Hispanic
 ■ Hispanic

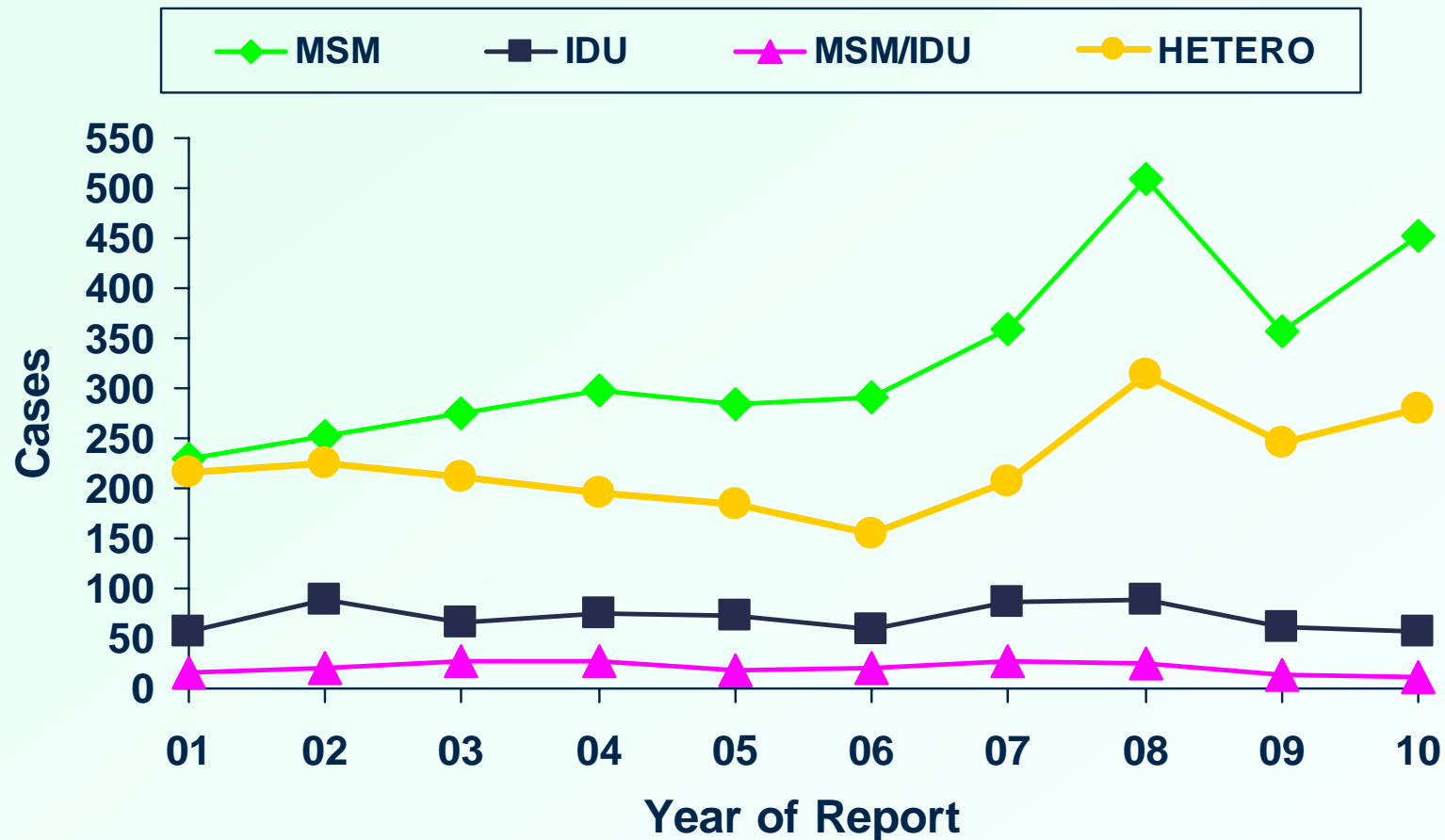
Less than 50 years



50+ years



Male HIV Cases Among Persons Age 50+ by Mode of Exposure and Year of Report, Florida, 2001-2010

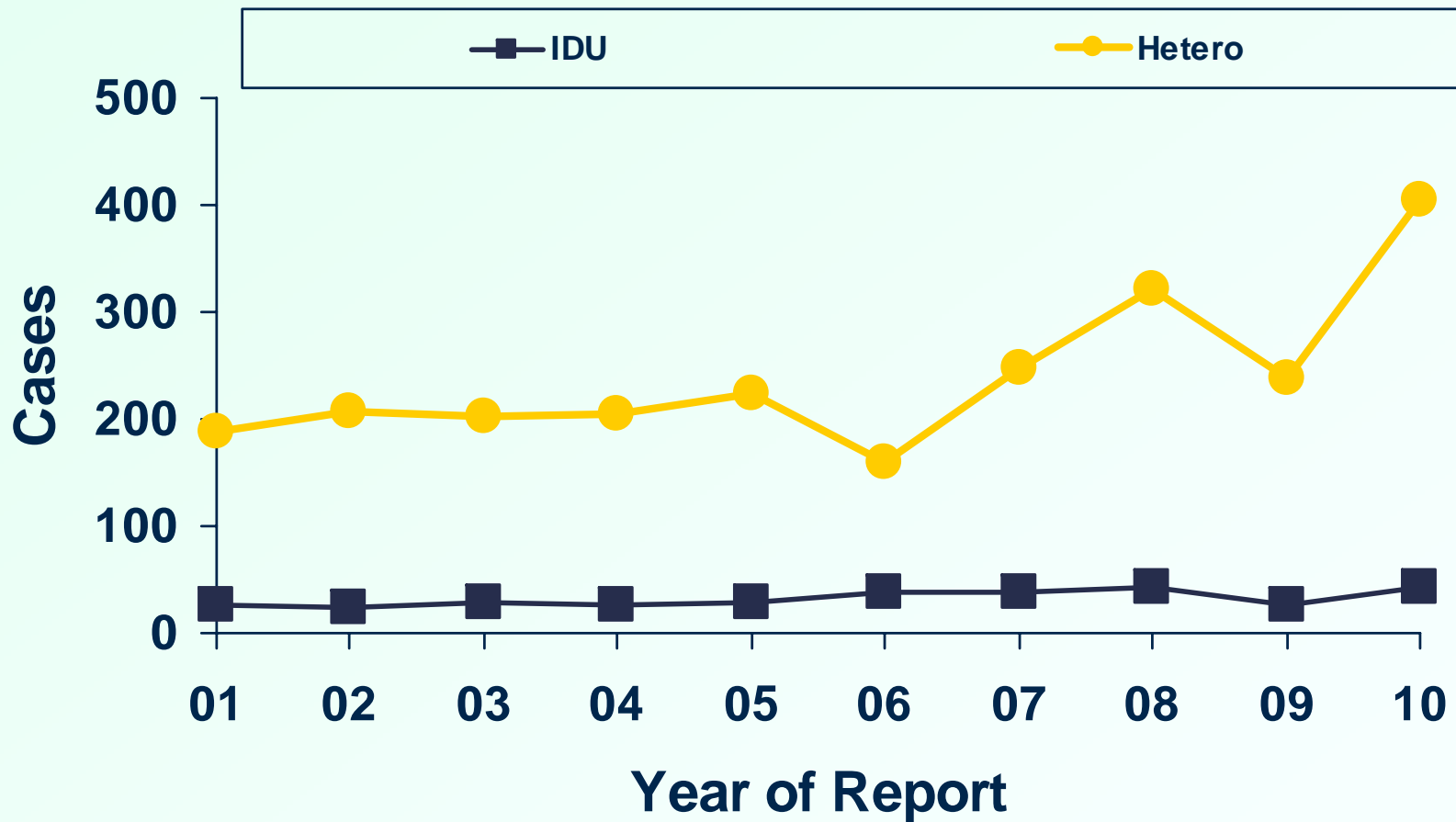


Over the past ten years, male sex with male (MSM) remains as the primary mode of exposure among male HIV cases ages 50 and over in Florida, followed by high risk heterosexual contact.

Note: NIRS



Female HIV Cases Among Persons Age 50+ by Mode of Exposure and Year of Report, Florida, 2001-2010



The heterosexual risk continues to be the dominant mode of exposure among females ages 50 and over.

Note: NIRs redistributed.



HIV (not AIDS) Cases Among Persons Age 50+ By Exposure Category, Age at Diagnosis And Sex, Reported through 2010, Florida

Males	50-59		60-69		70+	
	#	%	#	%	#	%
Men Sex with Men (MSM)	1657	55%	445	52%	89	42%
Injecting drug use (IDU)	341	11%	67	8%	9	4%
MSM/IDU	99	3%	11	1%	0	0%
Heterosexual contact	895	30%	330	39%	116	54%
Other	3	0%	0	0%	0	0%
TOTAL	2995	100%	853	100%	214	100%
Females	50-59		60-69		70+	
	#	%	#	%	#	%
Injecting drug use	148	13%	16	5%	0	0%
Heterosexual contact	995	87%	309	95%	61	100%
Other	3	0%	0	0%	0	0%
TOTAL	1146	100%	325	100%	61	100%

Through 2010, there were more males (4,062) reported with HIV than females (1,532). Of males aged 50-59, more than half contracted HIV from MSM and 30% from heterosexual contact. In contrast, of males ages 70 and over, 54% acquired HIV from heterosexual sex, while only 42% developed HIV from MSM. Among females of all age groups for ages 50 and over, more than 85% acquired HIV via heterosexual sex.

NIR Redistributed



Aging and HIV Infection

- Studies have suggested that aging is an important risk factor in accelerated HIV disease progression*
- HIV infection and aging both greatly impact the immune system
- With an immune system doubly challenged, those aging with HIV will likely confront more health challenges such as
 - Diabetes, heart disease, and other co-morbidities
 - Fatigue, malnutrition, and bone problems
 - Menopause issues (for women)

*Adler WH, Baskar PV, Chrest FJ, Dorsey-Cooper B, Winchurch RA, Nagel JE. HIV infection and aging:

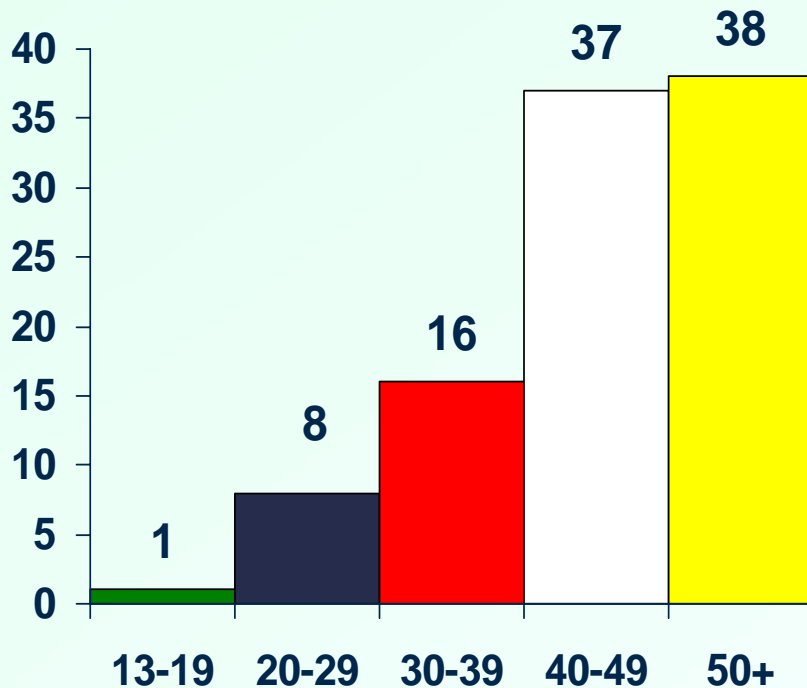
mechanisms to explain the accelerated rate of progression in the older patient. Mech Ageing Dev 1997 Jun; 96 (1-3): 137-55



Percent of Living Adult HIV/AIDS Cases by Sex and Current Age Group Florida, Data through 2010

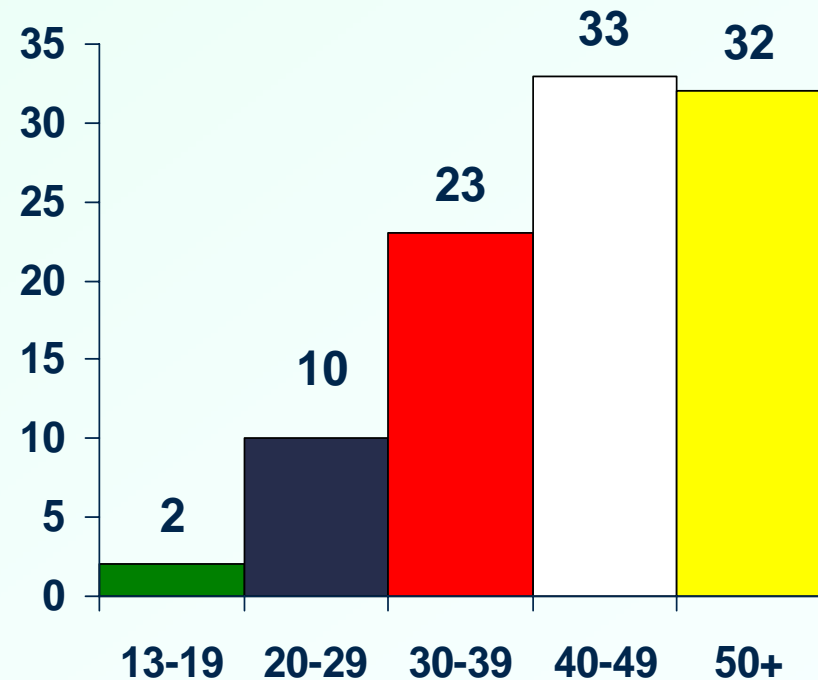
Males (N=66,431)

Percent



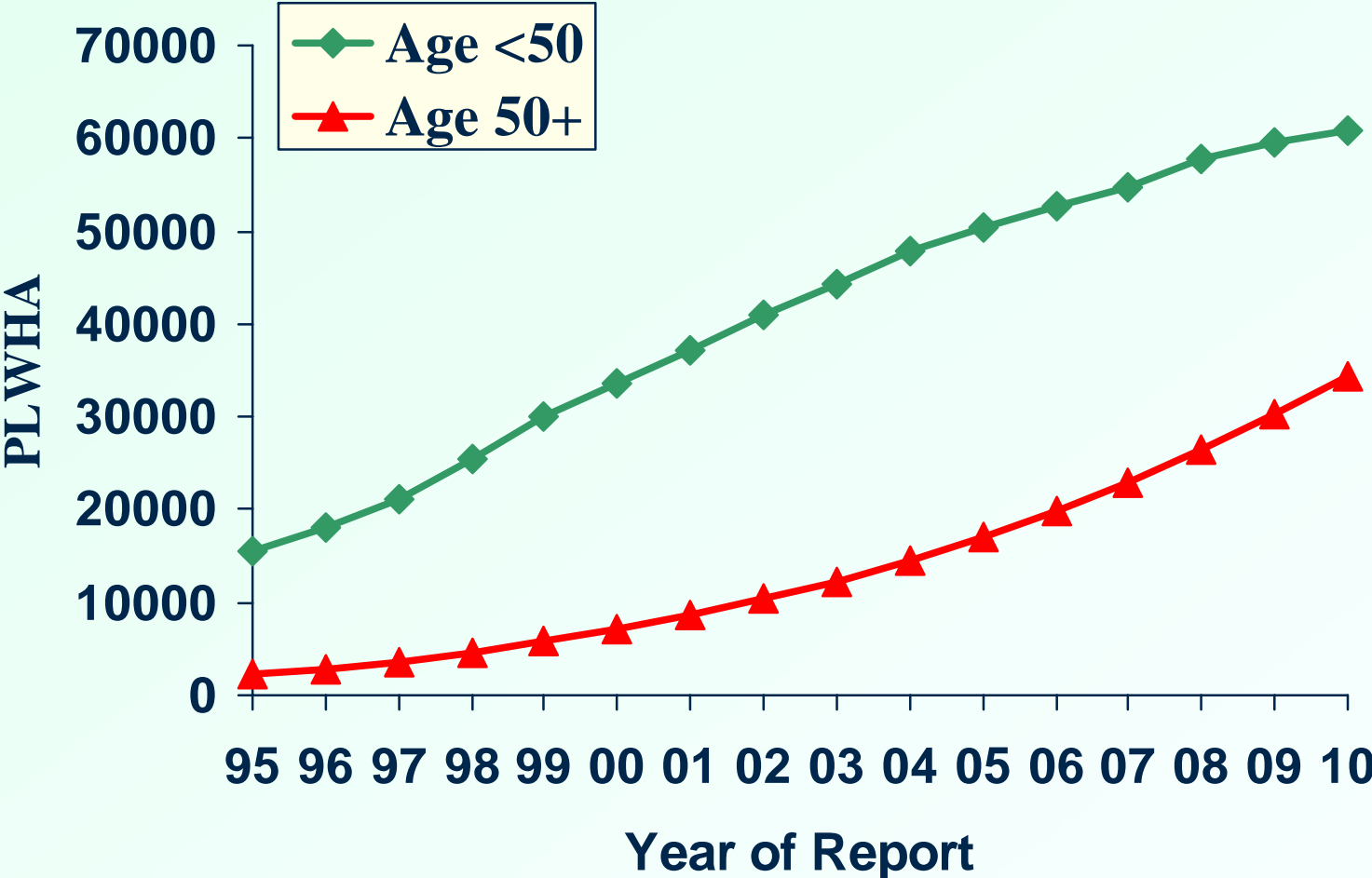
Females (N=28,595)

Percent



Comment: Females tend to be diagnosed with AIDS at a younger age than males, suggesting earlier onset of sexual activity with high risk partners and exposure to HIV, possibly through sex with older male partners. In recent years, the proportion of cases ages 50+ has increased among both males and females, as cases are living longer. Data as of 05/26/2011

Annual Prevalence of Living HIV/AIDS Cases By Current Age Group, Florida, 1995-2010

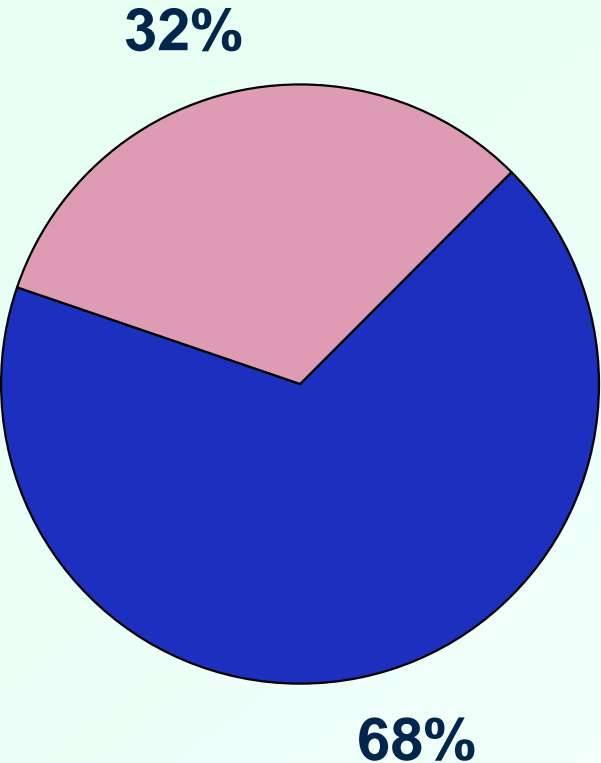


As a result of declining deaths, annual HIV/AIDS diagnoses have exceeded deaths since 1995, and the number of persons reported with HIV/AIDS that are presumed to be alive has been increasing. Since the year 1995, prevalent cases have increased by over 280% for ages <50 and over 1,482% for ages 50+. In the past year the prevalence increased by 14% for ages <50 and 22% for ages 50+.

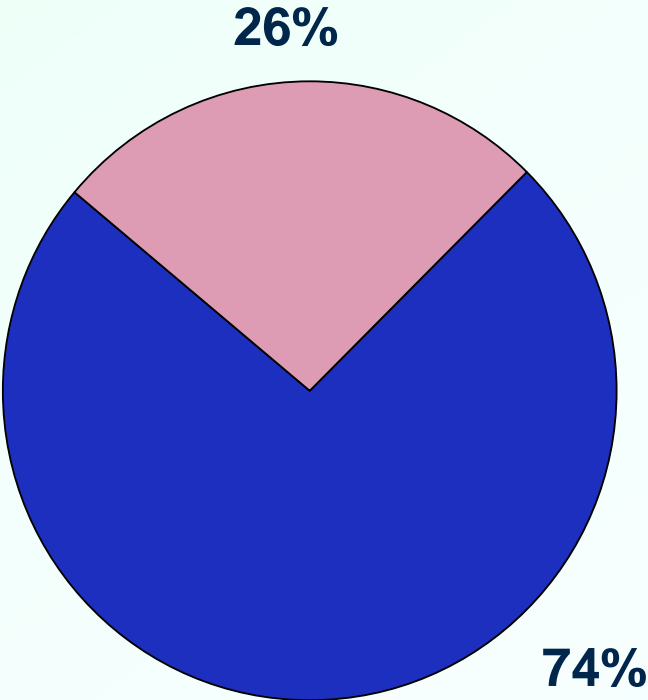


Living HIV/AIDS Cases by Gender and Age Group Florida, Through 2010

Age <50, (N=60,647)



Age 50+, (N=34,379)

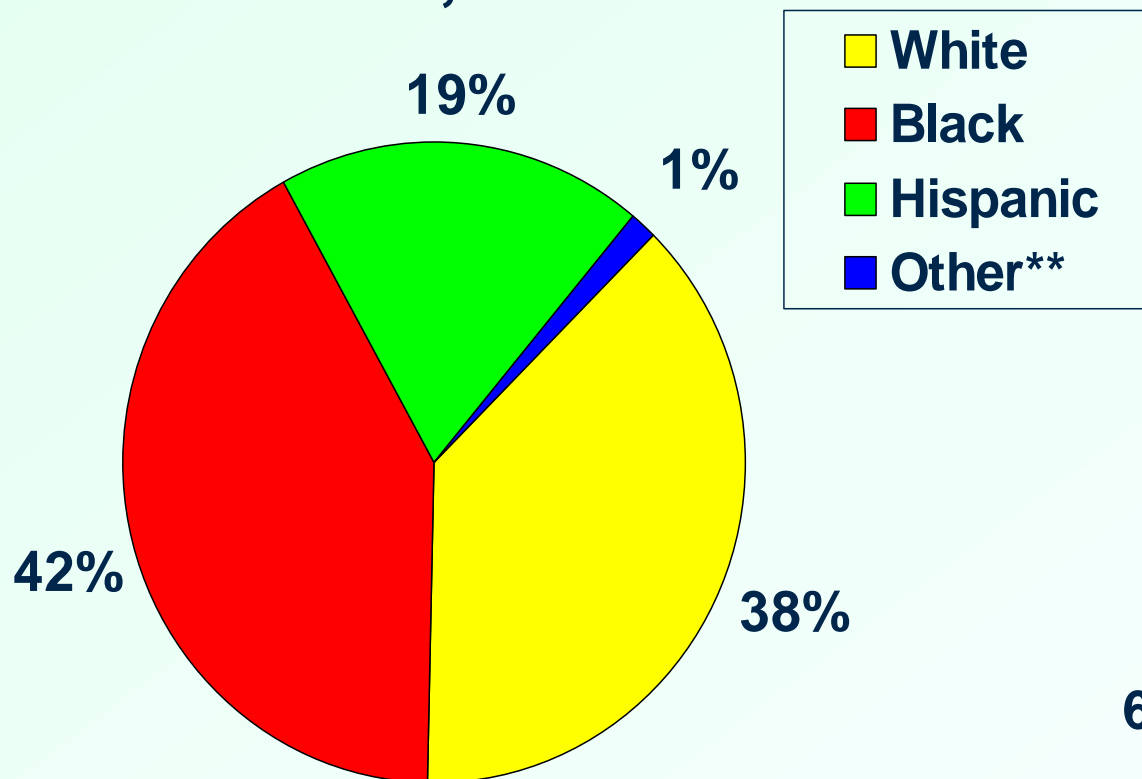


■ Males
■ Females

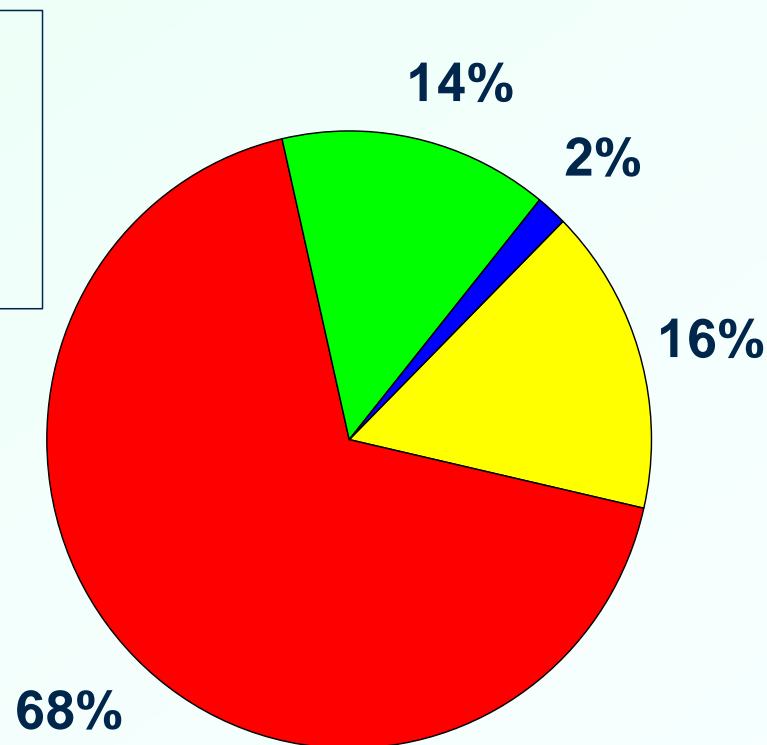
Florida's Adult Population is:
49% Male and 51% Female.

Living HIV/AIDS Cases, Ages 50+ By Gender & Race/Ethnicity, Florida, Through 2010

Males
N=25,322



Females
N=9,057



Comment: In this snapshot of living HIV/AIDS cases through 2010, among males 42% are black and the majority of females are black (68%).

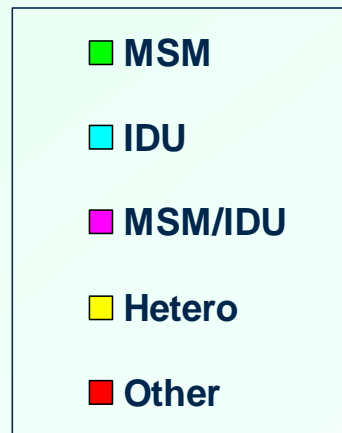
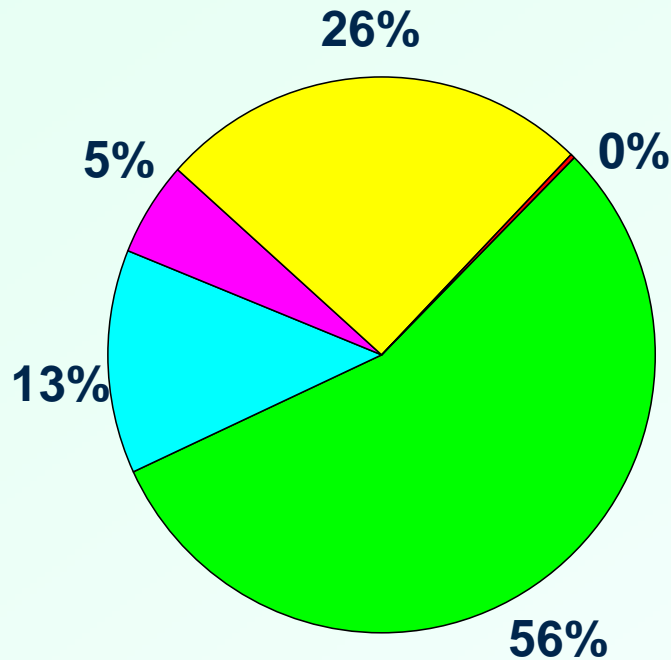
*Data includes Dept of Corrections cases.

**Other includes Asian/Pacific Islanders and Native Alaskans/American Indians. Data as of 05/26/11

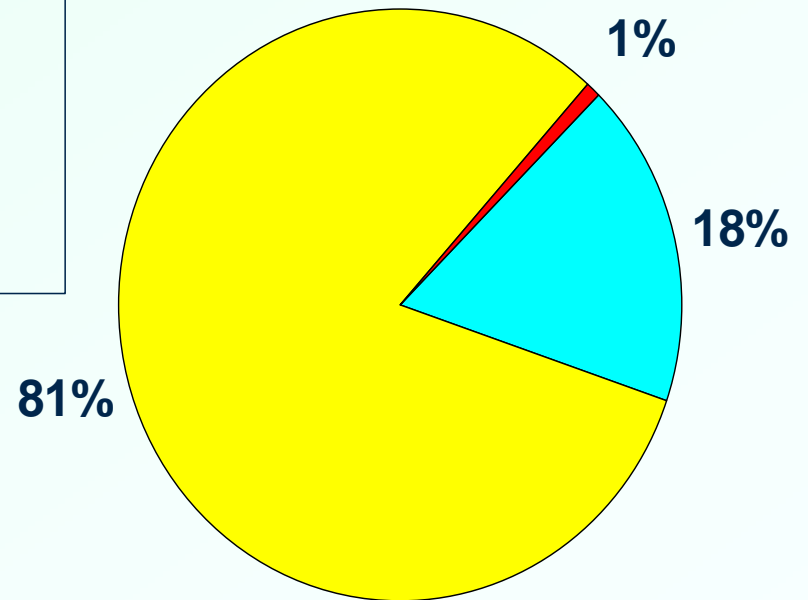


Living HIV/AIDS Cases Among Persons Age 50+ by Mode of Exposure Category and Sex Florida, Data through 2010

Males
N=25,322



Females
N=9,057



Note: NIRs redistributed.

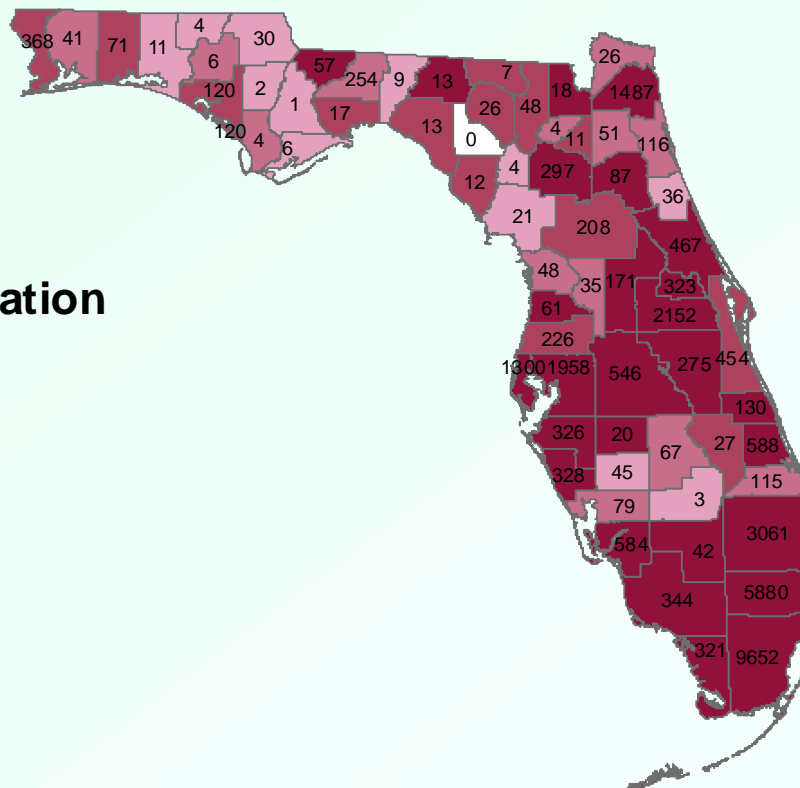
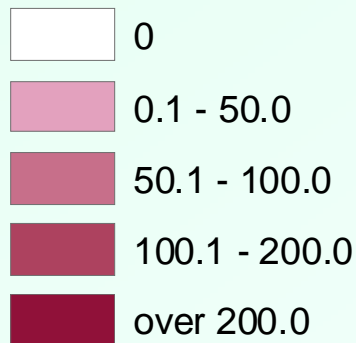
Living HIV/AIDS Cases Among Person Age 50+ By Race, Age and Mode of Exposure Florida, through 2010

Race/Ethnicity	Men		Women		Total	
	No.	Percent	No.	Percent	No.	Percent
White	9,556	38%	1465	16%	11,021	32%
Black	10,558	42%	6,145	68%	16,703	49%
Hispanic	4,866	19%	1,307	14%	6,173	18%
Other	345	1%	140	2%	485	1%
Age Group						
50-59	18,193	72%	6,598	73%	24,791	72%
60-69	5,641	22%	1898	21%	7,539	22%
70+	1,488	6%	561	6%	2,049	6%
Exposure Category						
MSM	14034	55%	0	0%	14,034	41%
IDU	3343	13%	1611	18%	4,954	14%
MSM/IDU	1385	5%	0	0%	1,385	4%
Heterosexual Contact	6521	26%	7376	81%	13,897	40%
Other Confirmed Risk	39	0%	70	1%	109	0%
Total	25,322		9,057		34,379	
Adjustments have been made to redistribute NIR cases.						

Living HIV/AIDS Case Rates per 100,000 Population Among Persons Age 50+ Reported by County of Residence, Florida, Reported through 2010

N=33,114

Rate per 100,000 Population

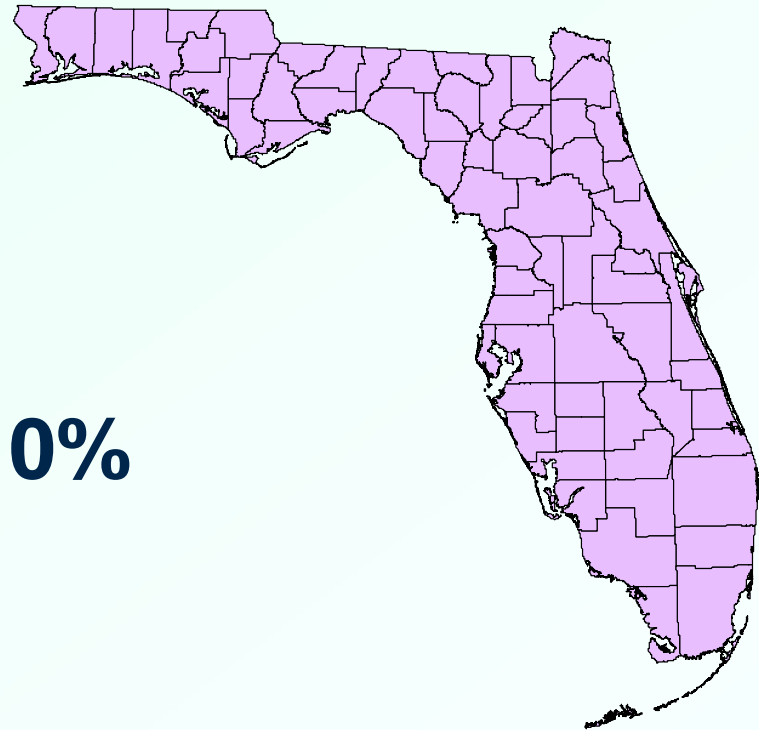


Based on 2010 statewide midyear estimates for Age 50+ population.
The cumulative rates for persons Age 50+ is 493.3 per 100,000 population.
County totals exclude Department of Correction cases (N=1,265).
Numbers on counties are cases reported.

Living HIV/AIDS Cases Of the Persons Age 50+ Reported through December, 2010

68% resided in the following counties at the time of diagnosis:

- **Dade County 32%**
- **Broward County 19%**
- **Palm Beach County 10%**
- **Orange County 7%**



Living HIV/AIDS Case Rates Among Persons Age 50+ For Counties with a 50+ Population Over 100,000 Florida, Reported through 2010

County	50+ Population*	Percent of State Pop	50+ HIV/AIDS Cases	50+ HIV/AIDS Case Rate**	Percent of State 50+ HIV/AIDS Cases
Miami-Dade	791,416	14%	9,909	1252.1	32%
Broward	573,678	10%	5,913	1030.7	19%
Palm Beach	528,853	10%	3,085	583.3	10%
Orange	287,167	5%	2,296	799.5	7%
Hillsborough	363,559	7%	1,960	539.1	6%
Duval	271,434	5%	1,488	548.2	5%
Pinellas	401,559	7%	1,300	323.7	4%
Saint Lucie	117,425	2%	589	501.6	2%
Lee	280,994	5%	584	207.8	2%
Polk	217,926	4%	569	261.1	2%
Volusia	219,532	4%	482	219.6	2%
Brevard	242,348	4%	455	187.7	1%
Escambia	104,204	2%	377	361.8	1%
Manatee	137,067	2%	326	237.8	1%
Collier	150,835	3%	345	228.7	1%
Sarasota	215,089	4%	328	152.5	1%
Seminole	131,510	2%	323	245.6	1%
Pasco	195,294	4%	231	118.3	1%
Marion	151,076	3%	262	173.4	1%
Lake	137,416	2%	186	135.4	1%
Sub Total	5,518,382	100%	31,008	561.9	100%
Remaining Counties	1,450,622		3,371	232.4	
STATE TOTAL	6,969,004		34,379	493.3	

*2010 Population Estimates, FL DOH, Office of Planning, Evaluation and Data Analysis

**Case rate per 100,000 population





THINGS TO PONDER

- *Old age is **NOT** a safety net.*
- *Older people also need to be checked for HIV/AIDS!*
- *Sex does **NOT** end at 50.*
- *Life **BEGINS** at 50!!*



For Florida HIV/AIDS Surveillance Data

Contact: (850) 245-4444

Lorene Maddox, MPH Ext. 2613

Tracina Bush, BSW Ext. 2612

Julia Fitz, MPH Ext. 2373

Internet <http://www.floridaaids.org>

Intranet <http://dohiws.doh.state.fl.us>

CDC's Internet site for HIV/AIDS Slides:

<http://www.cdc.gov/hiv/graphics.htm>