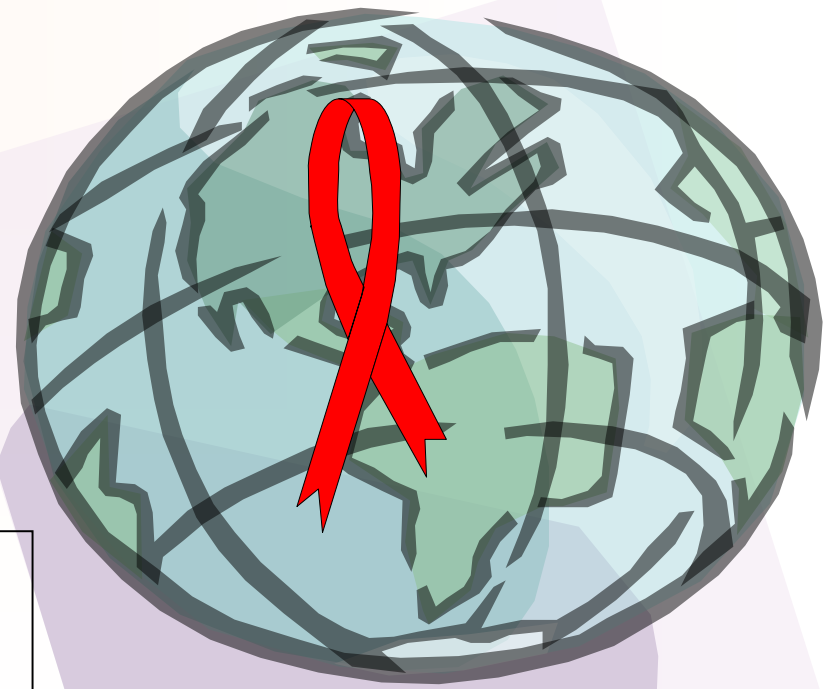


# **Impact of HIV Disease by Country of Birth in Florida, Reported Through 2010**



**Florida Department of Health  
Bureau of HIV/AIDS**

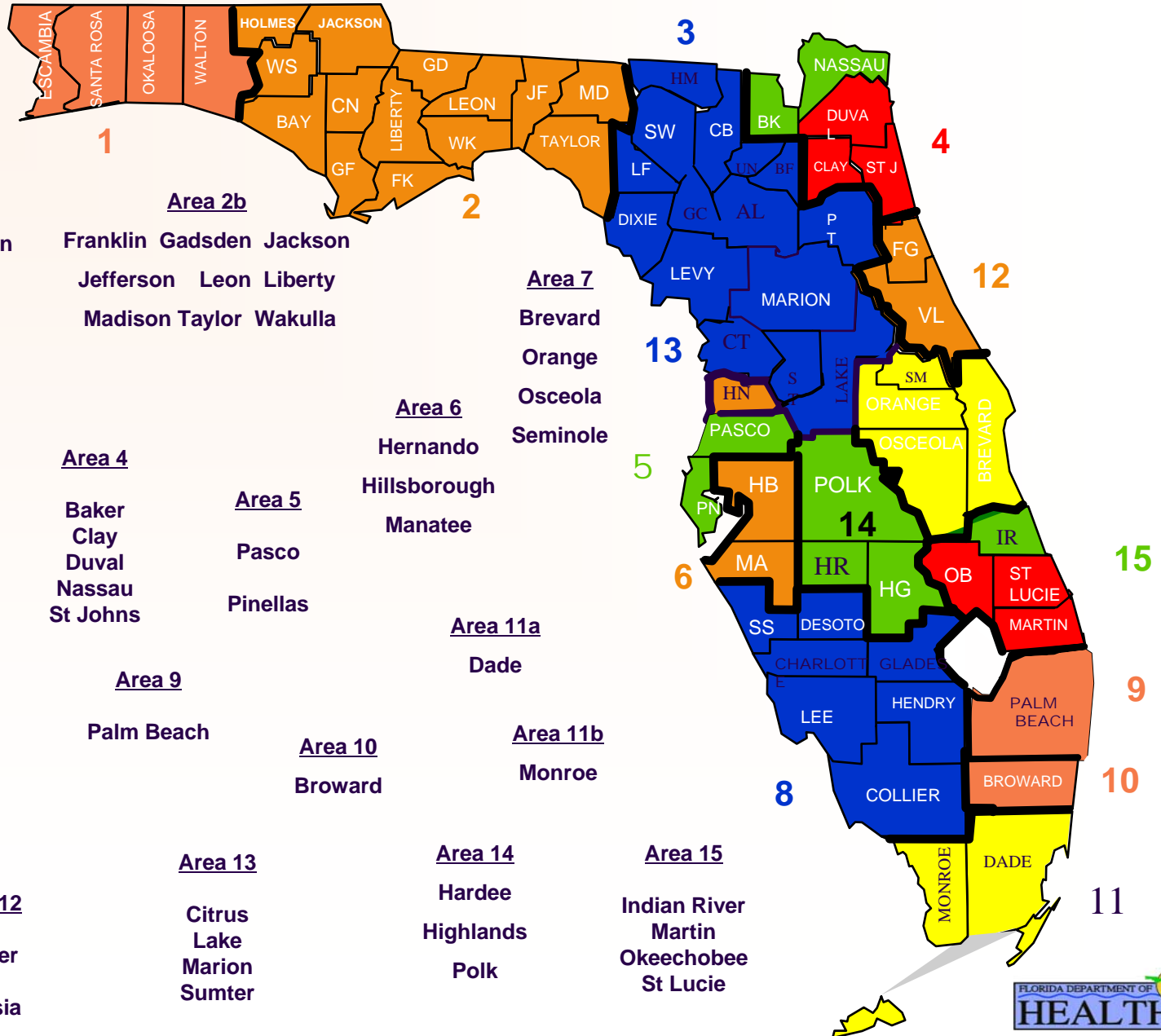
**Annual data trends as of 12/31/2010**

**Living (Prevalence) data as of 05/26/2011**

# HIV and AIDS Case Data

- Ⓡ **Adult cases represent ages 13 and older, pediatric cases are those under the age of 13. For data by year, the age is by age of diagnosis. For living data, the age is by current age at the end of the most recent calendar year, regardless of age at diagnosis.**
- Ⓡ **Unless otherwise noted, whites are non-Hispanic and blacks are non-Hispanic.**
- Ⓡ **Total statewide data will include Department of Correction Cases (DOC) unless otherwise noted. County data will exclude DOC cases.**
- Ⓡ **HIV prevalence data are generated later in the year, usually in May, when most of the “expected” death data are complete.**
- Ⓡ **Unless otherwise note, cases with an unknown or blank country of birth were eliminated from these analyses.**

# Florida Areas



**Area 1**  
 Escambia  
 Okaloosa  
 Santa Rosa  
 Walton

**Area 2a**  
 Bay Calhoun  
 Gulf Holmes Jackson  
 Washington

**Area 2b**  
 Franklin Gadsden Jackson  
 Jefferson Leon Liberty  
 Madison Taylor Wakulla

**Area 3**  
 Alachua Bradford  
 Columbia  
 Dixie Gilchrist Hamilton  
 Lafayette Levy Putnam  
 Suwannee Union

**Area 4**  
 Baker  
 Clay  
 Duval  
 Nassau  
 St Johns

**Area 5**  
 Pasco  
 Pinellas

**Area 6**  
 Hernando  
 Hillsborough  
 Manatee

**Area 7**  
 Brevard  
 Orange  
 Osceola  
 Seminole

**Area 11a**  
 Dade

**Area 9**  
 Palm Beach

**Area 10**  
 Broward

**Area 11b**  
 Monroe

**Area 8A**  
 Charlotte  
 Glades  
 Hendry  
 Lee

DeSoto  
 Sarasota  
 Collier

**Area 13**  
 Citrus  
 Lake  
 Marion  
 Sumter

**Area 14**  
 Hardee  
 Highlands  
 Polk

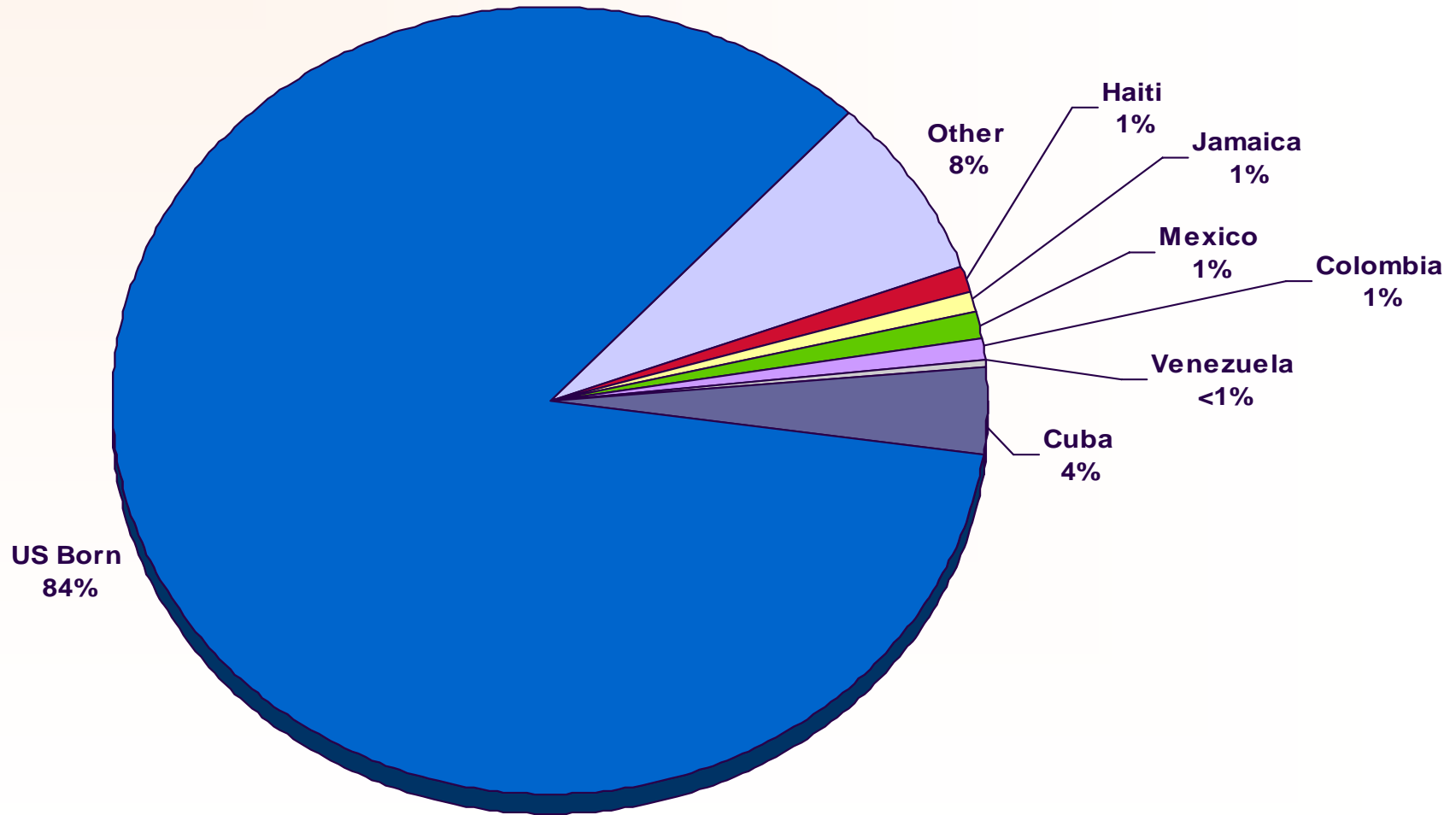
**Area 15**  
 Indian River  
 Martin  
 Okeechobee  
 St Lucie

**Area 12**  
 Flagler  
 Volusia

# Definitions of Mode of Exposure Categories

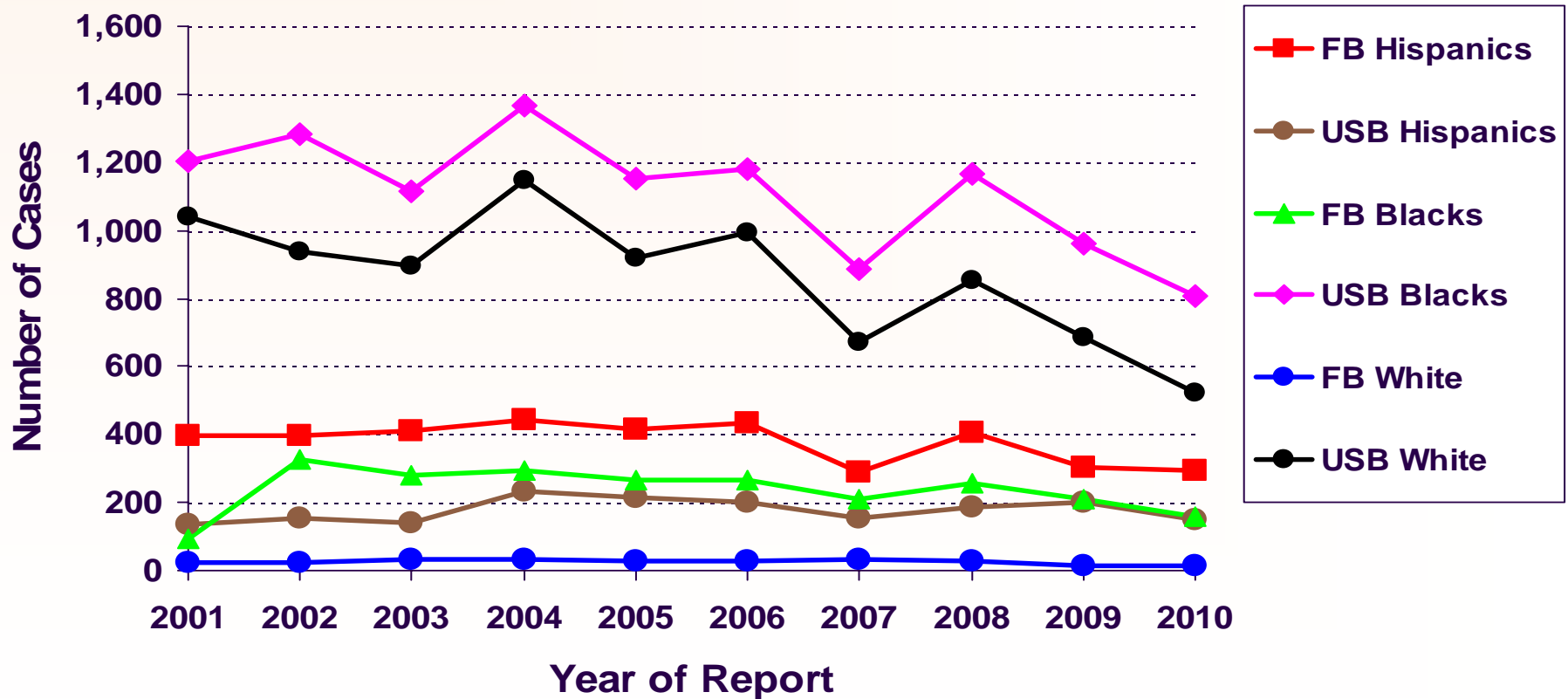
- ◆ **MSM** = Men who have sex with men
- ◆ **IDU** = Injection Drug Use
- ◆ **MSM/IDU** = Men who have sex with men & Injection Drug Use
- ◆ **Heterosexual** = Heterosexual contact with person with HIV/AIDS or known HIV risk
- ◆ **OTHER** = includes hemophilia, transfusion, perinatal and other pediatric risks and other confirmed risks.
- ◆ **NIR** = Cases reported with No Identified Risk
- ◆ **Redistribution of NIRs** = This illustrates the effect of statistically assigning (redistributing) the NIRs to recognized exposure (risk) categories by applying the proportions of historically reclassified NIRs to the unresolved NIRs.

# Percent of Florida's Population by Country of Birth (2000 US Census)



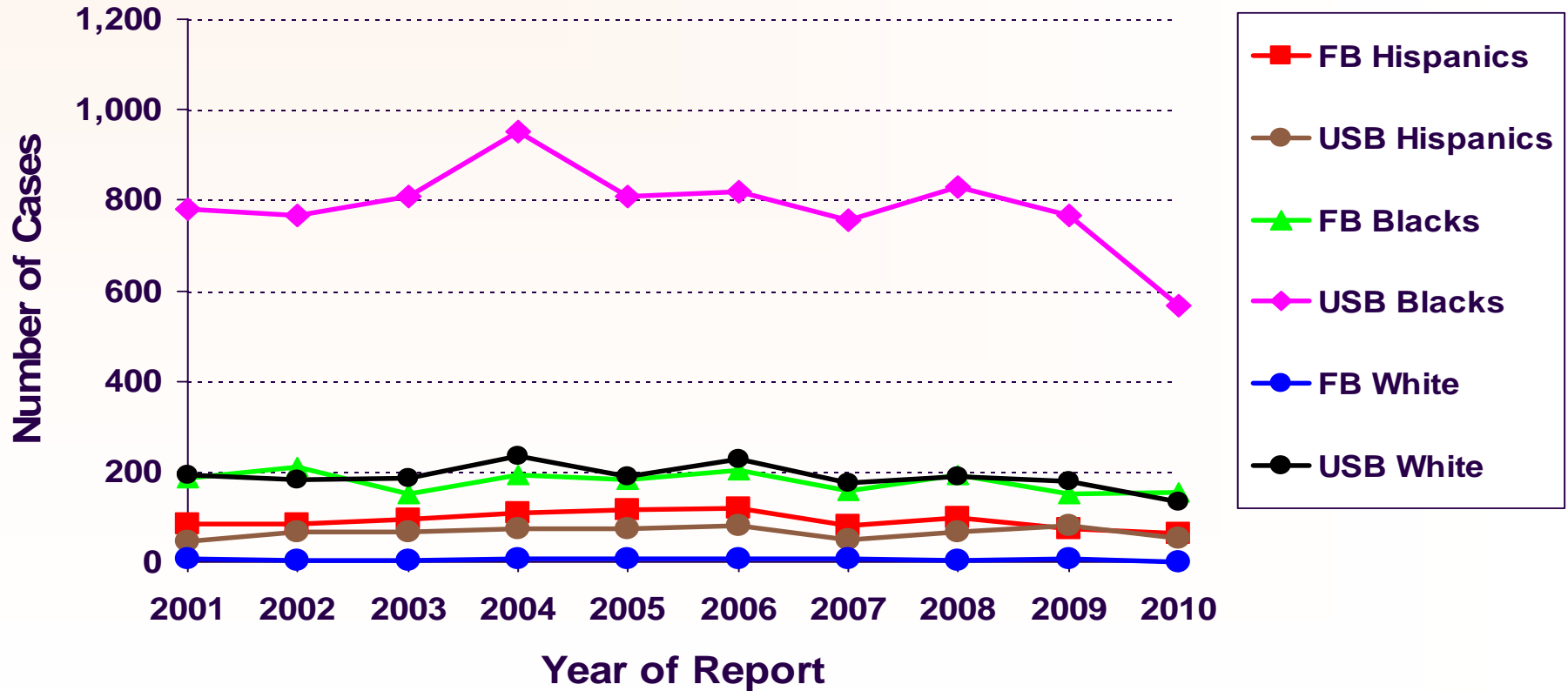
# Male AIDS Cases

## by Race/Ethnicity and Country of Birth\* and Year of Report, 2001-2010, Florida



\*FB=Foreign Born, USB=US Born

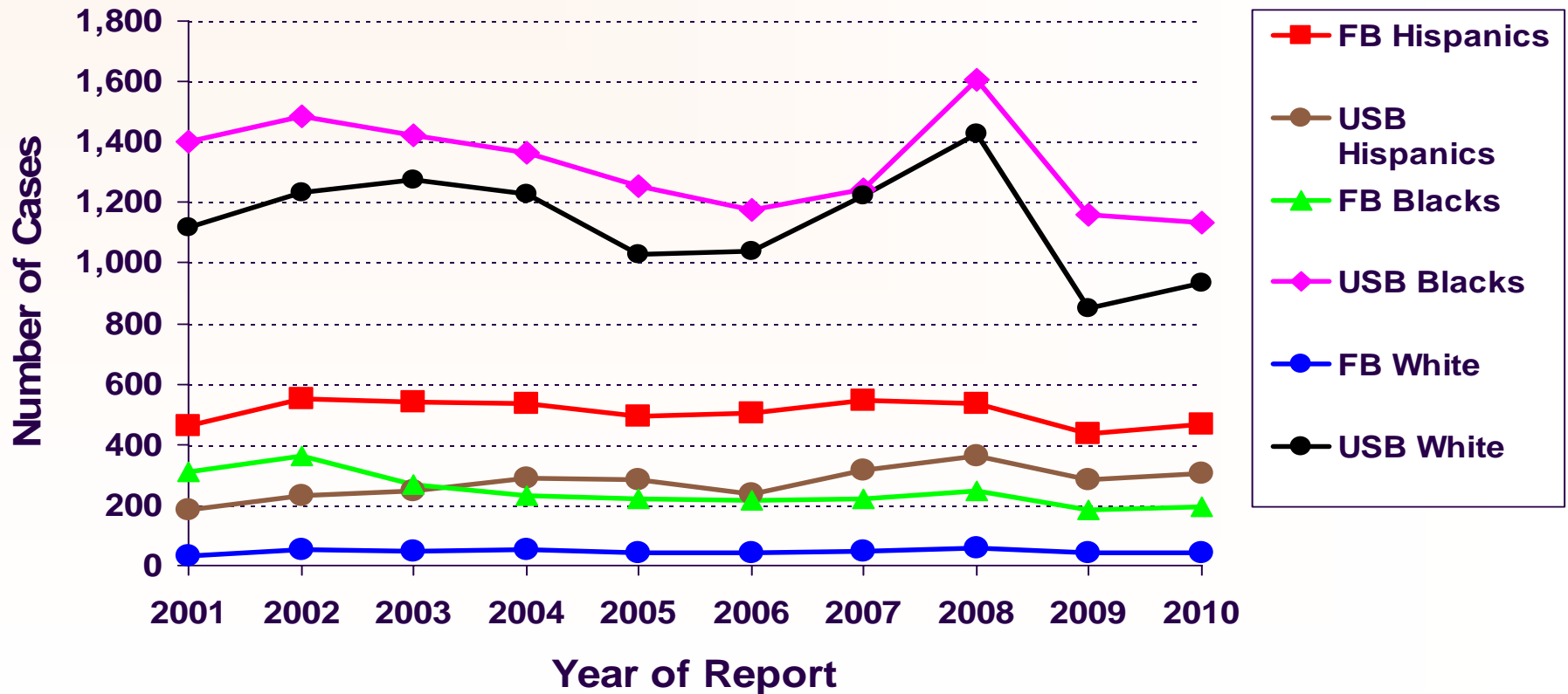
# Female AIDS Cases by Race/Ethnicity and Country of Birth\* and Year of Report, 2001-2010, Florida



\*FB=Foreign Born, USB=US Born

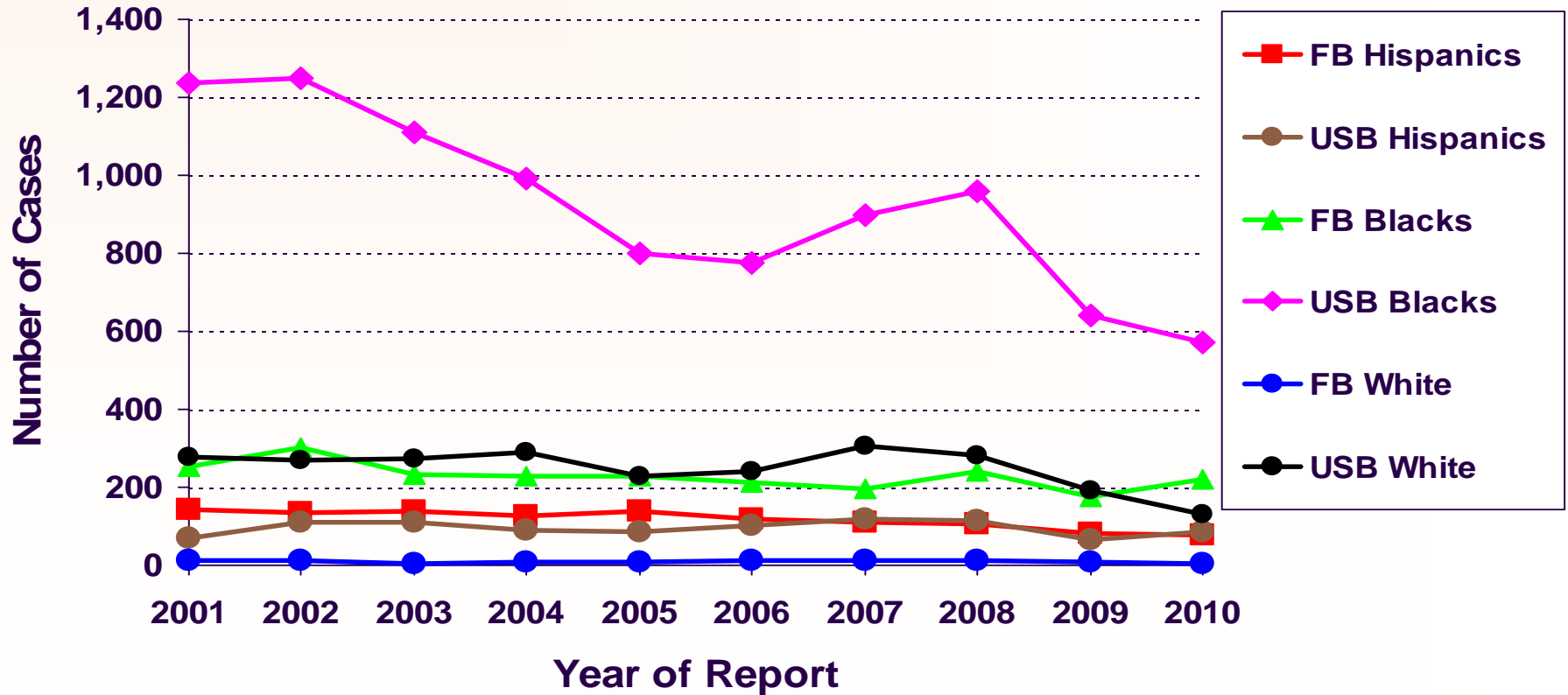
# Male HIV Cases

## by Race/Ethnicity and Country of Birth\* and Year of Report, 2001-2010, Florida



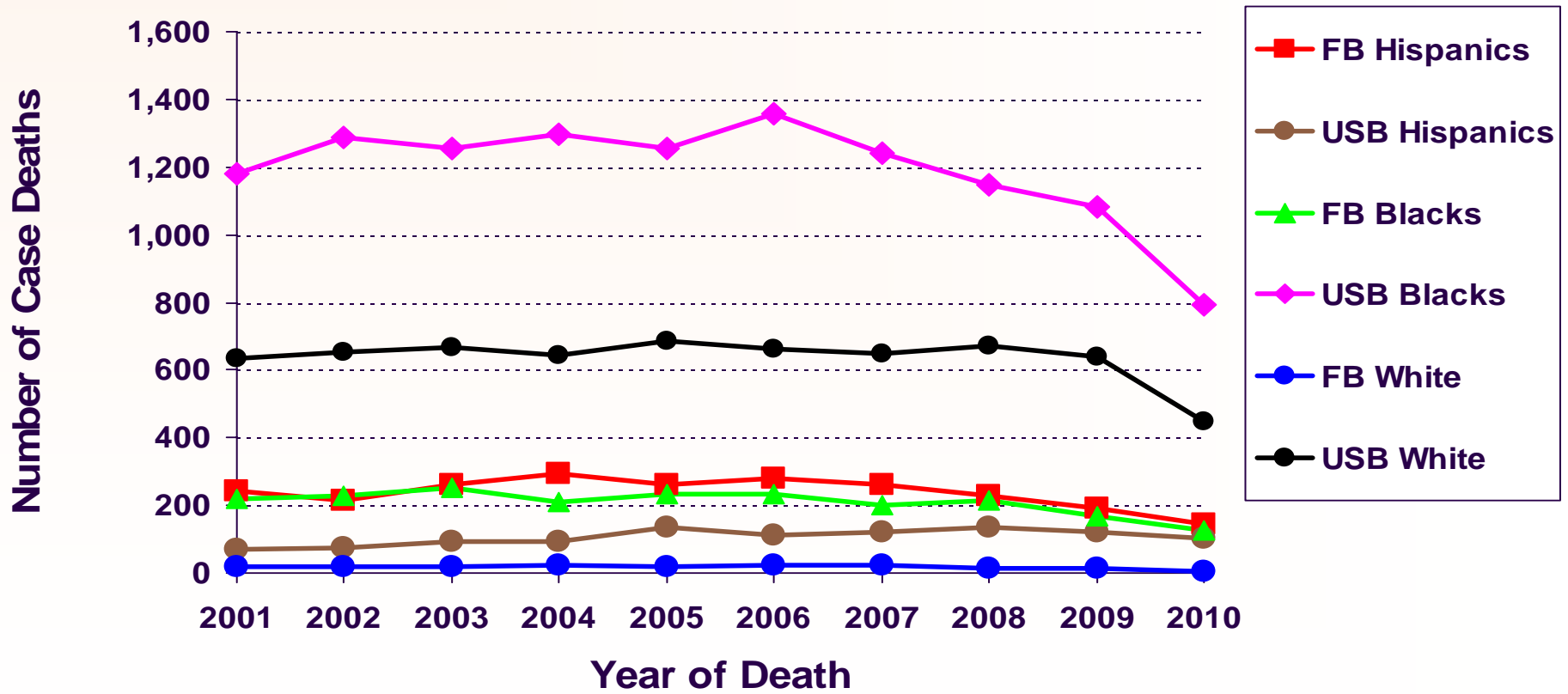
\*FB=Foreign Born, USB=US Born

# Female HIV Cases by Race/Ethnicity and Country of Birth\* and Year of Report, 2001-2010, Florida



\*FB=Foreign Born, USB=US Born

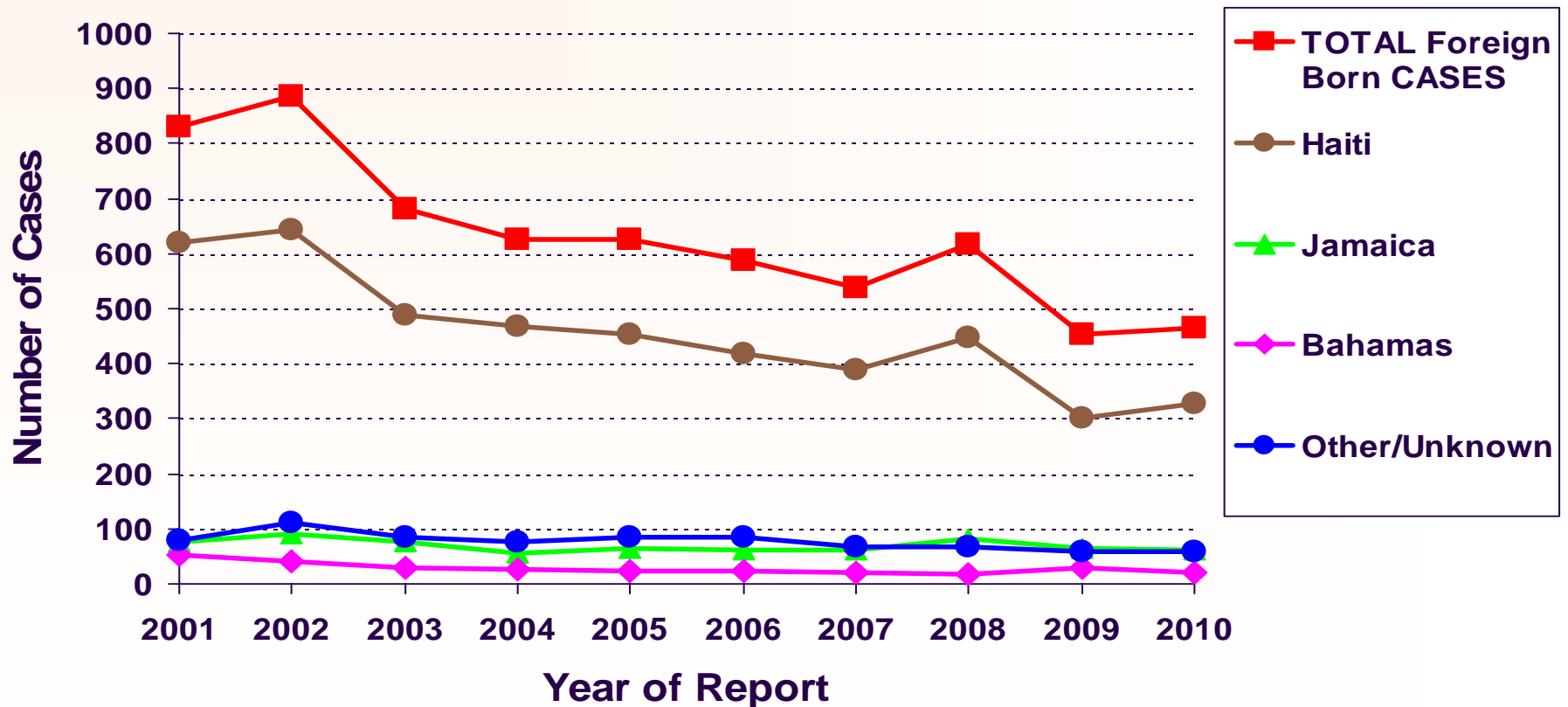
# Adult HIV/AIDS Cases, Known Dead, Regardless of Cause, by Race/Ethnicity and Country of Birth\* and Year of Death, Florida, 2001-2010



\*FB=Foreign Born, USB=US Born

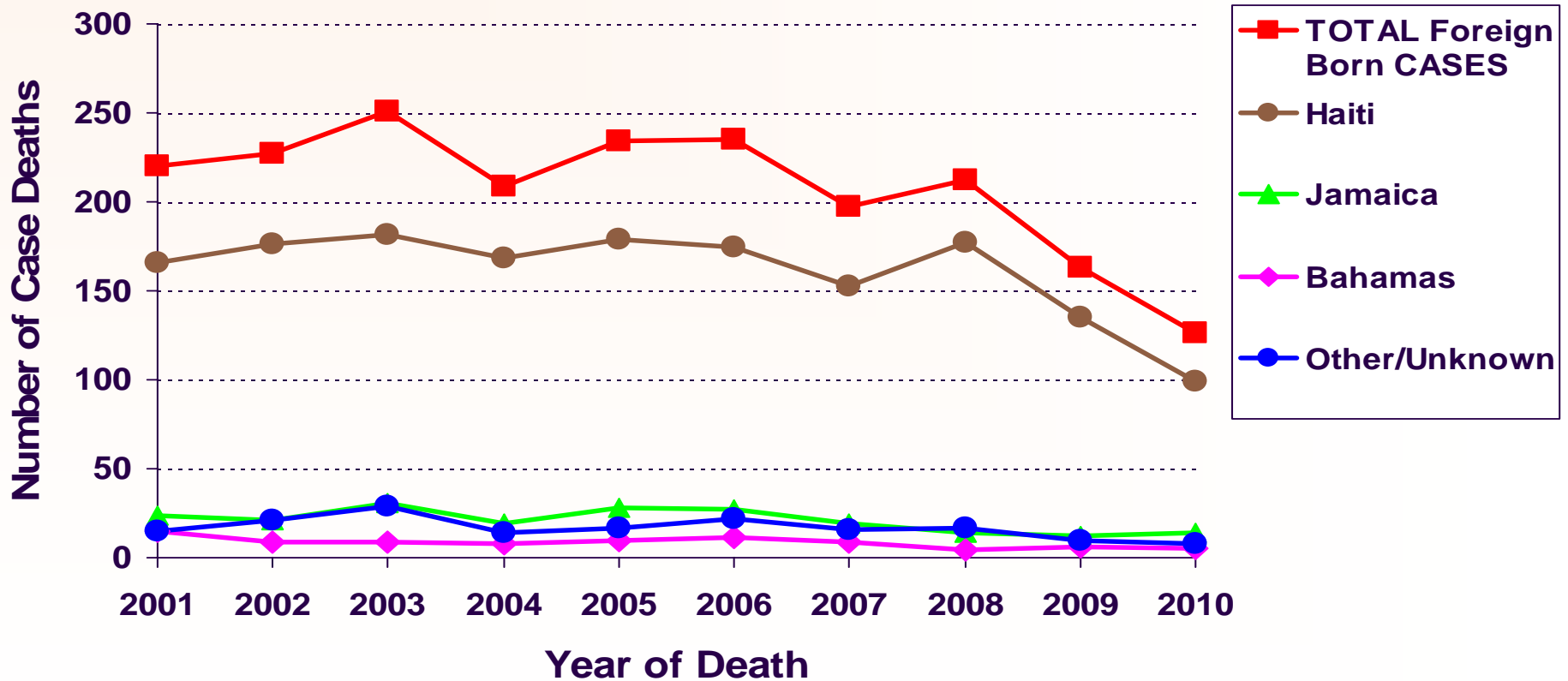
**Impact of HIV Disease  
among Blacks,  
by Country of Birth  
in Florida,  
Reported Through 2010**

# Black Foreign-Born Adult HIV/AIDS Cases by Country of Birth and Year of Report, 2001-2010, Florida



Note: Each year, the majority of black foreign born HIV/AIDS cases were Haitian born. Enhanced reporting laws were implemented in Nov. 2006, leading to an artificial peak in HIV cases in 2007 & 2008.

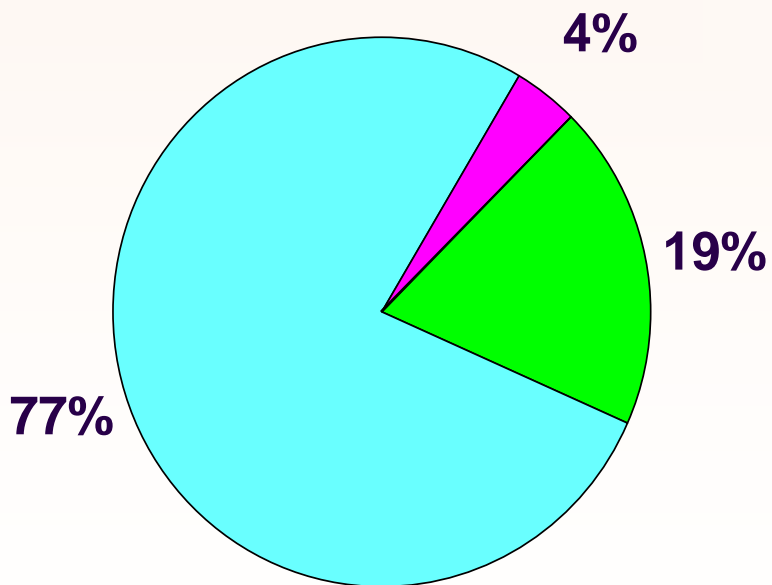
# Black Foreign-Born, Adult HIV/AIDS Cases, Known Dead, Regardless of Cause, by Country of Birth and Year of Death, Florida, 2001-2010



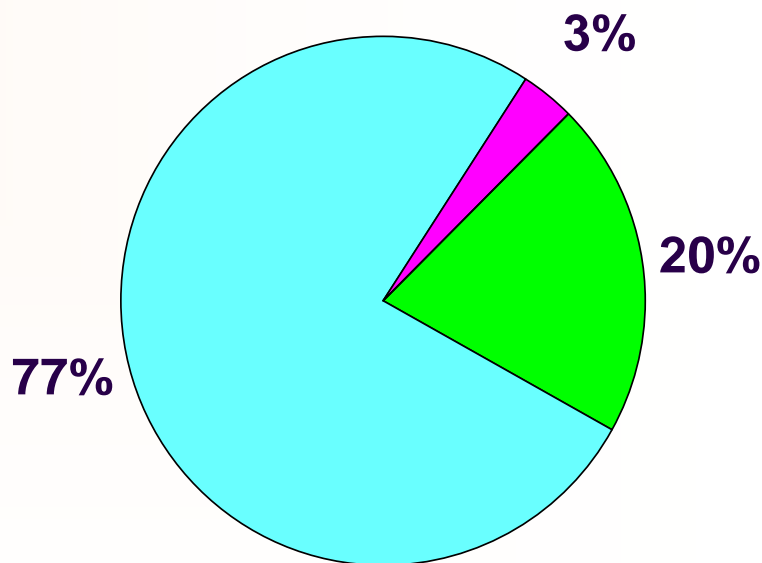
Note: Each year, the majority of black foreign born HIV/AIDS case deaths were Haitian born. Enhanced reporting laws were implemented in Nov. 2006, leading to an artificial peak in HIV cases in 2007 & 2008.

# Black Adults Living with HIV Disease, by Country of Birth & Sex, Reported through 2010, Florida

**Males**  
**N=26,701**



**Females**  
**N=19,796**



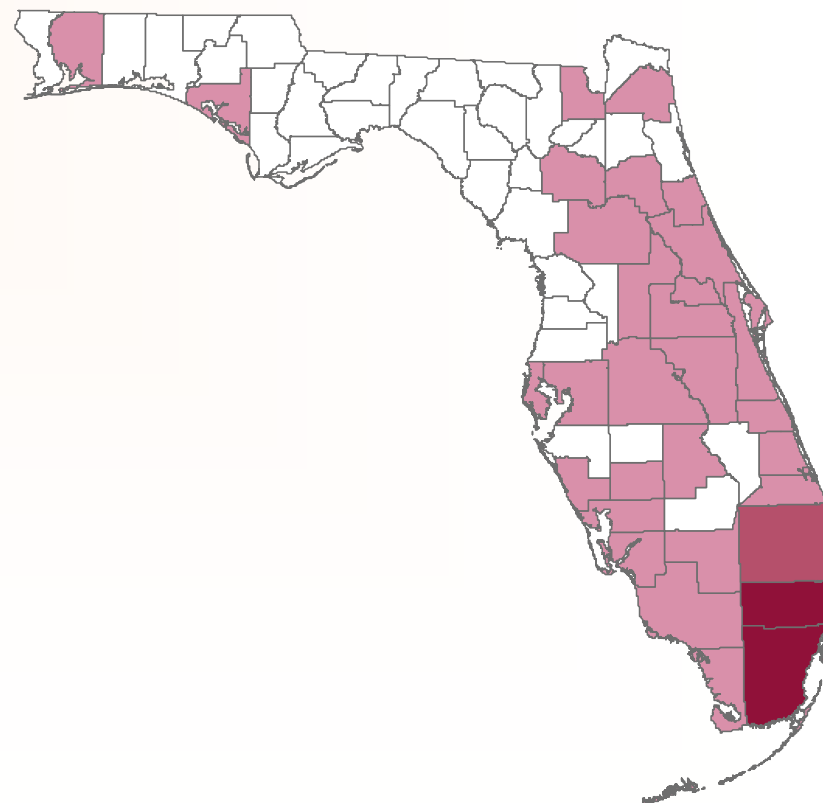
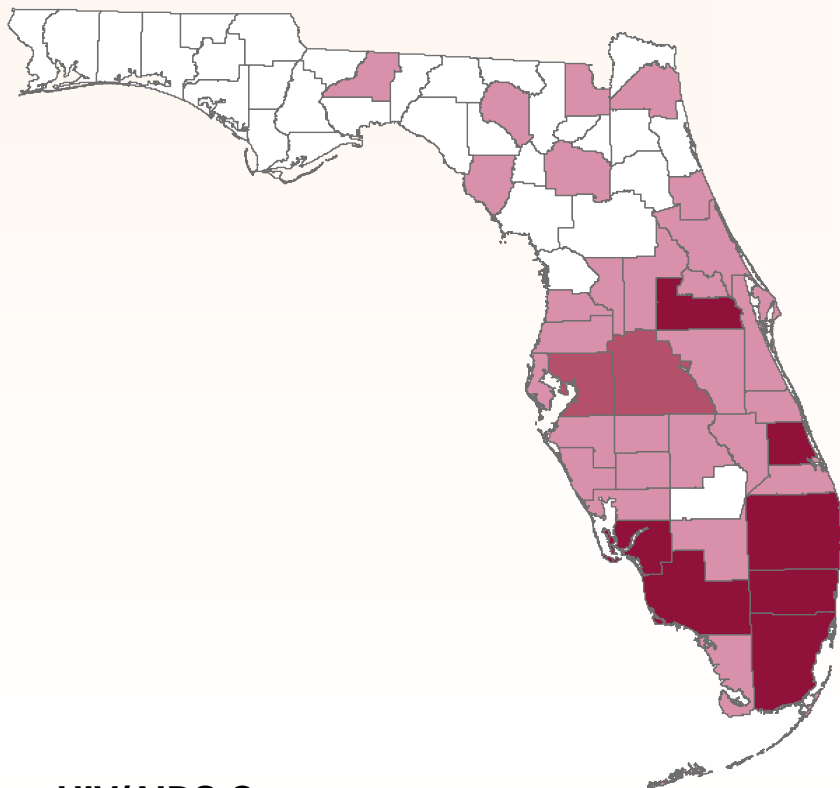
**■ Foreign-Born    ■ US Born    ■ Unknown\***

The majority (77% for both males and females) of blacks living with HIV disease in Florida were born in the United States.

# Black Adults Living with HIV Disease, by Selected Country of Birth, Reported through 2010, Florida

**Haiti**  
**N=6,903**

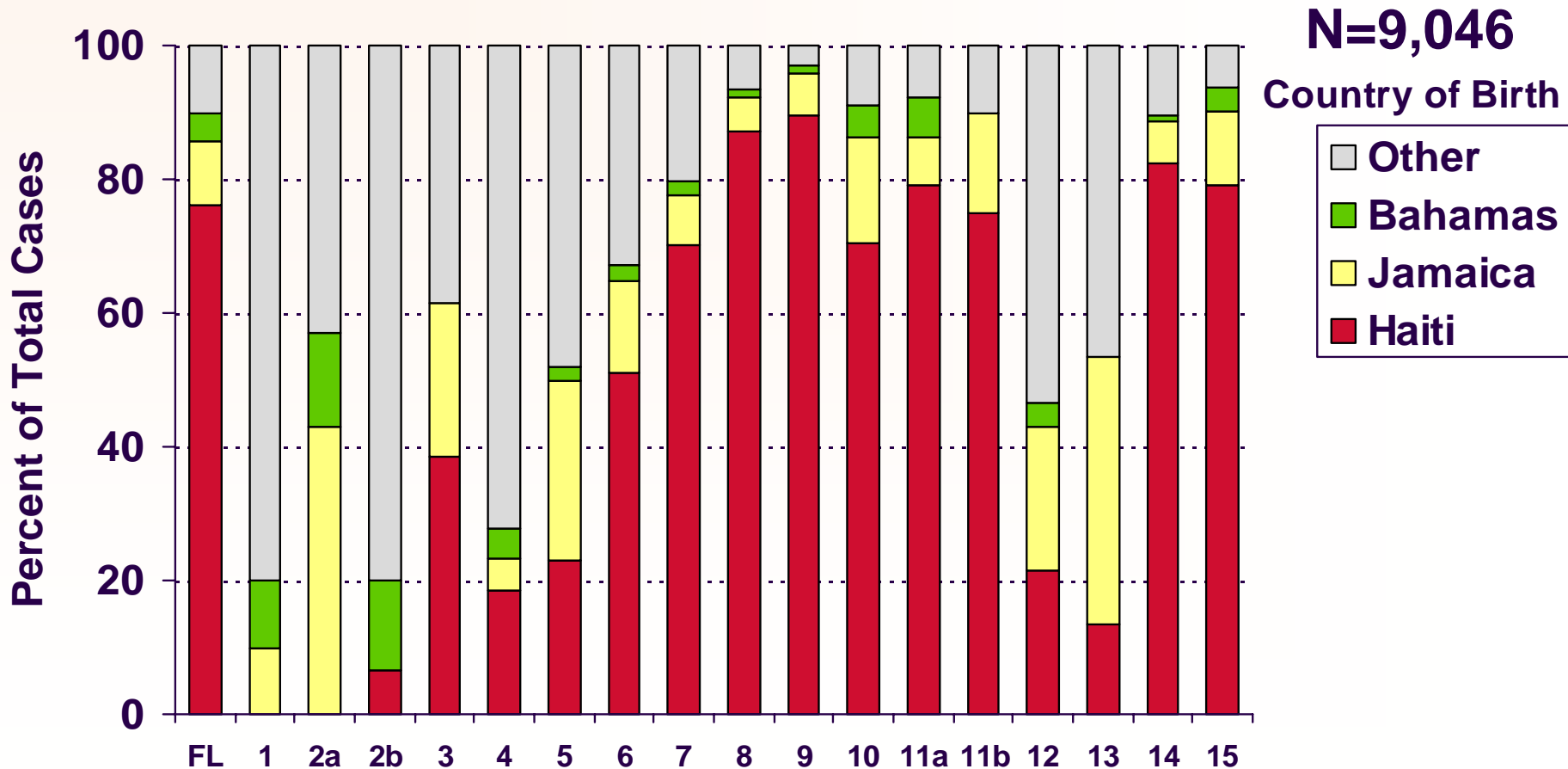
**Jamaica**  
**N=867**



**Living HIV/AIDS Cases**



# Non-U.S. Born Blacks Living with HIV Disease, by Country of Birth, by Reporting Area Reported Through 2010, Florida



# Black Adults Living with HIV Disease, by Country of Birth\*, reported through 2010, for Florida and Selected South Florida Counties\*\*

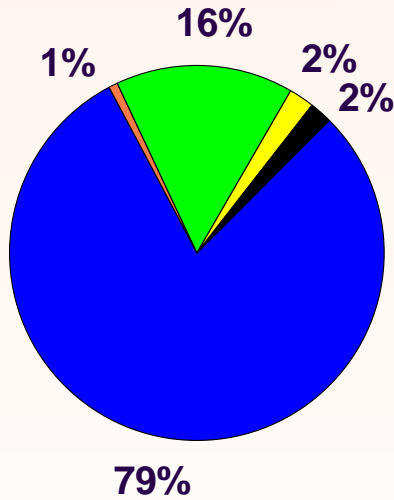
Country of Birth	Florida		Miami-Dade		Broward		Palm Beach	
	#	%	#	%	#	%	#	%
United States	35,685	80%	7,983	71%	5,195	70%	3,131	68%
Haiti	6,949	16%	2,614	23%	1,556	21%	1,343	29%
Jamaica	886	2%	239	2%	350	5%	93	2%
Bahamas	369	1%	193	2%	106	1%	17	0%
Other	929	2%	256	2%	195	3%	45	1%
<b>TOTAL</b>	<b>44,818</b>	<b>100%</b>	<b>11,285</b>	<b>100%</b>	<b>7,402</b>	<b>100%</b>	<b>4,629</b>	<b>100%</b>

\*Data sorted by foreign country of birth by number of cases, and excludes cases whose country of birth is unknown.

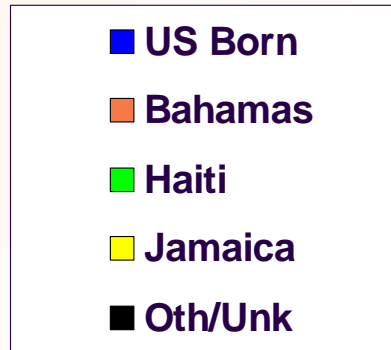
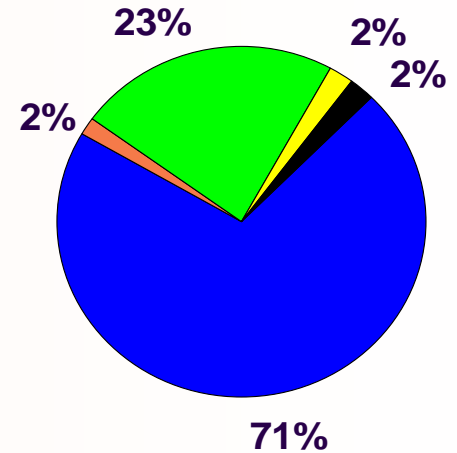
\*\*County data exclude Department of Correction cases.

# Black Adults Living with HIV Disease, by Country of Birth, Reported through 2010, Florida and South Florida Counties

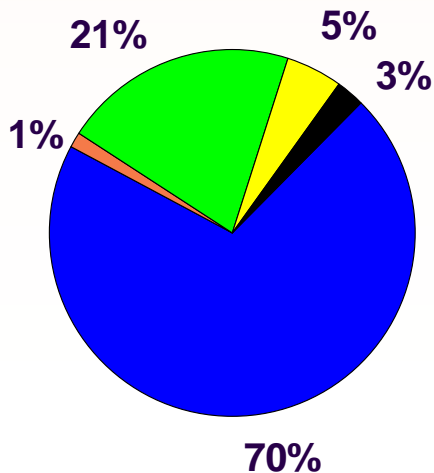
**Florida (N=44,818)**



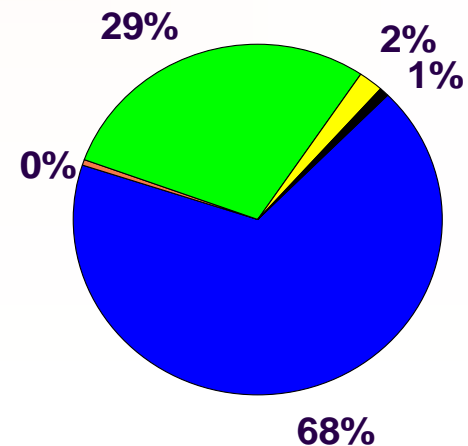
**Miami-Dade (N=11,285)**



**Broward (N=7,402)**

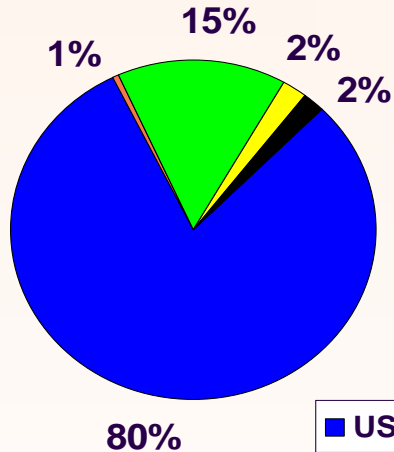


**Palm Beach (N=4,629)**

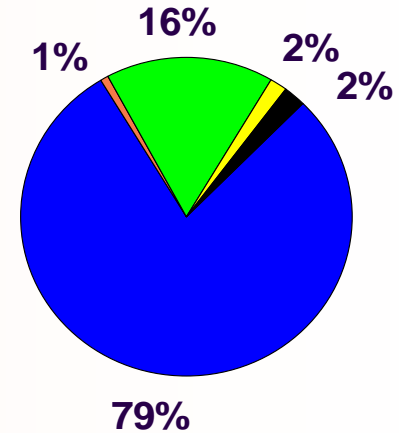


# Black Adults Living with HIV Disease, by Country of Birth and Sex, Reported Through 2010, Florida & South Florida

**Males (N=25,684)**



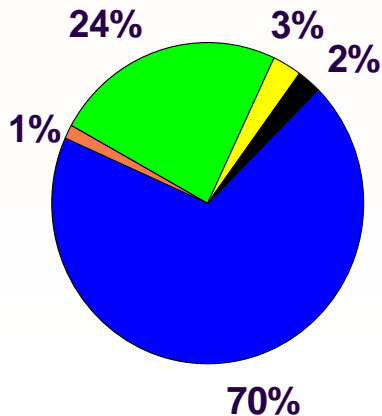
**Females (N=19,134)**



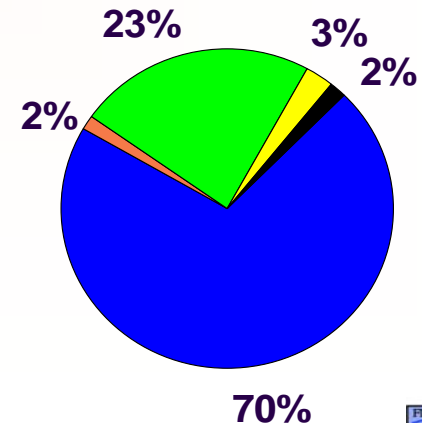
## Florida



**Males (N=12,562)**



**Females (N=10,754)**



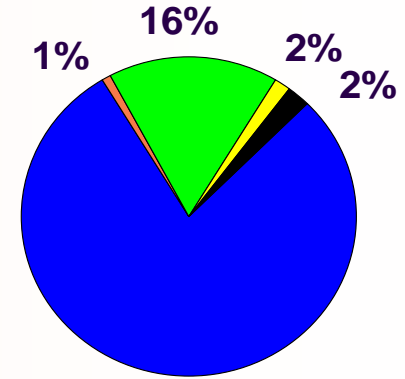
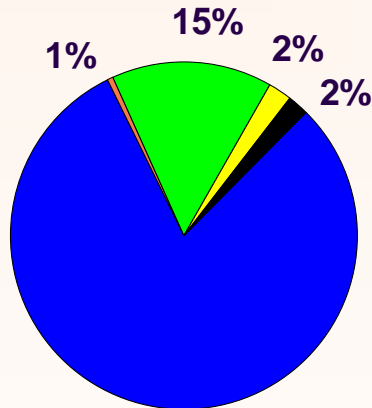
## South Florida

\*South Florida = Dade, Broward, and Palm Beach Counties (excl DOC)

# Black Adults Living with HIV Disease, by Country of Birth and Sex, Reported Through 2010, Florida & Central Florida

**Males (N=25,684)**

**Females (N=19,134)**

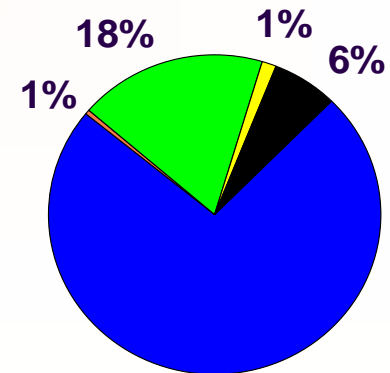
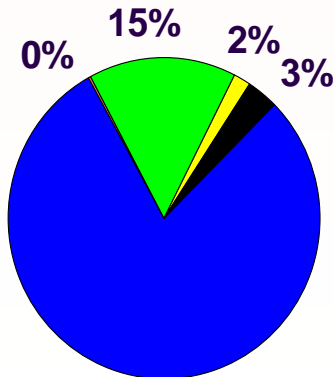


## Florida



**Males (N=1,890)**

**Females (N=1,261)**



## Central Florida

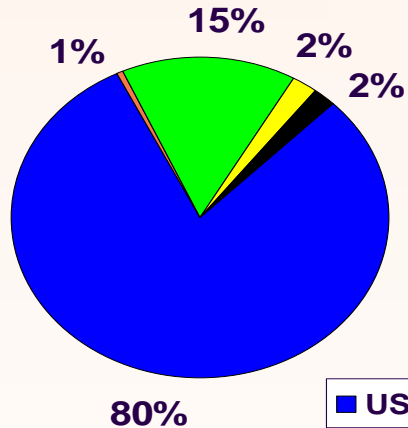
80%

74%

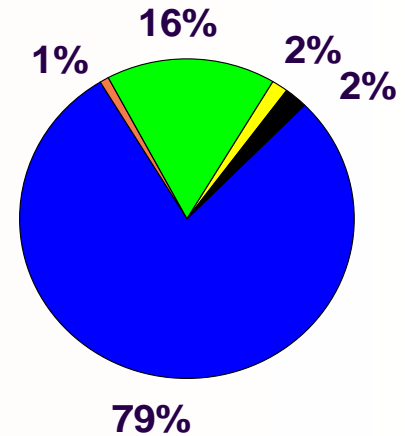
\*Central Florida = Orange, Osceola and Seminole Counties (excl DOC)

# Black Adults Living with HIV Disease, by Country of Birth and Sex, Reported Through 2010, Florida & Southwest Florida

**Males (N=25,684)**



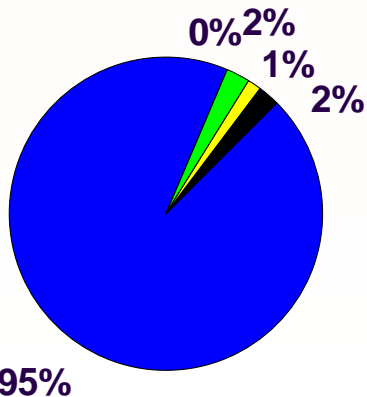
**Females (N=19,134)**



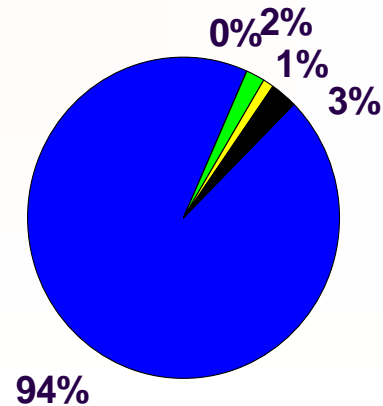
## Florida



**Males (N=1,985)**



**Females (N=1,416)**

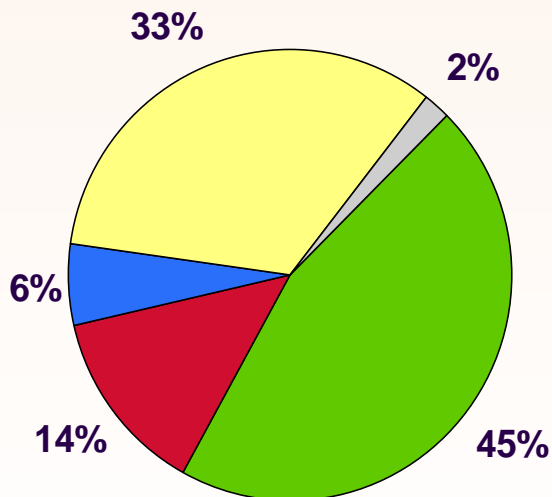


## Southwest Florida

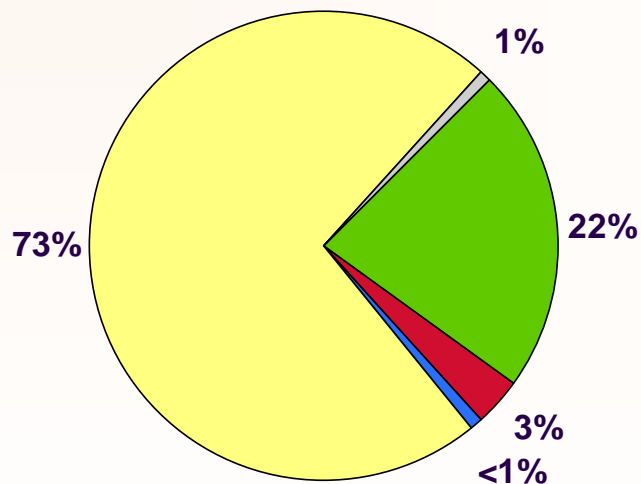
\*Southwest Florida = Hernando, Hillsborough, Pasco and Pinellas Counties (excl DOC)

# Black Adults Males Living with HIV Disease, by Selected Country of Birth and Mode of Exposure, Reported Through 2010, Florida

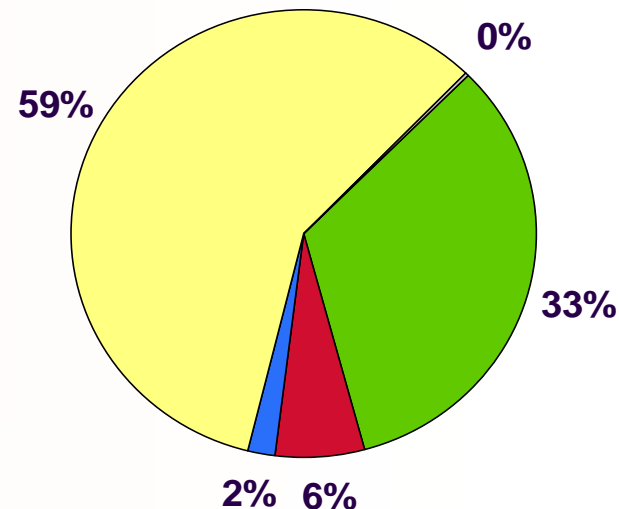
**U.S. Born  
N=20,603**



**Haiti  
N=3,831**



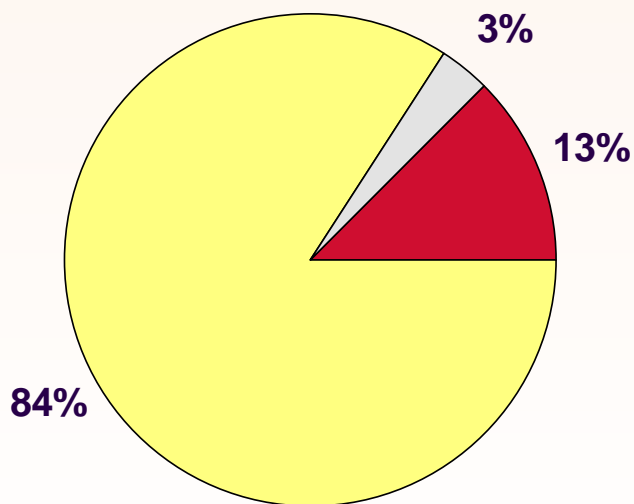
**Jamaica  
N=541**



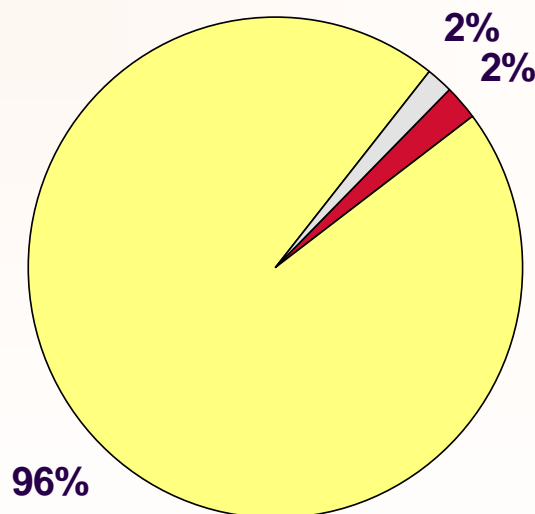
**Note: NIRs redistributed. Heterosexual contact is a much more common risk factor among male cases born in Haiti and Jamaica, compared to US-born cases.**

# Black Adults Females Living with HIV Disease, by Selected Country of Birth and Mode of Exposure, Reported Through 2010, Florida

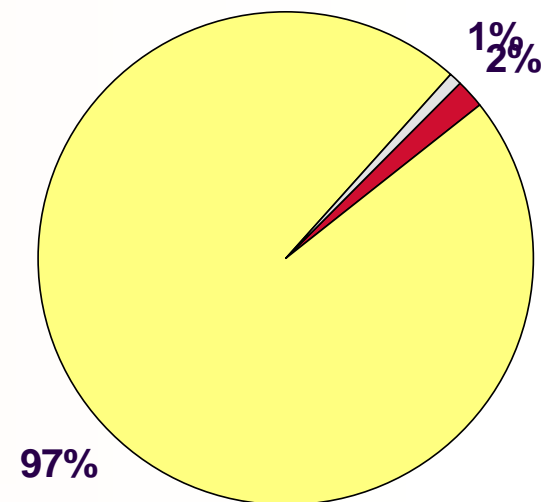
U.S. Born  
N=15,082



Haiti  
N=3,118



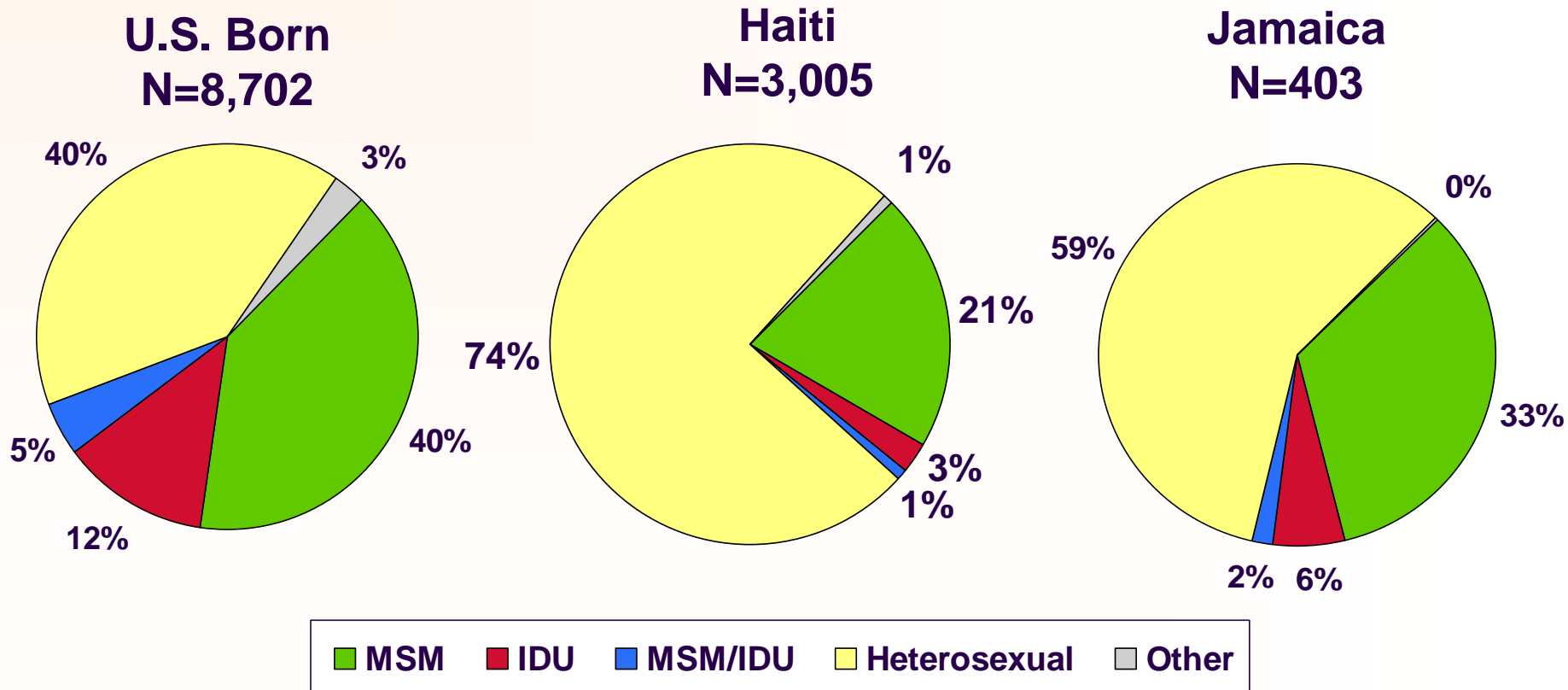
Jamaica  
N=345



■ IDU ■ Heterosexual ■ Other

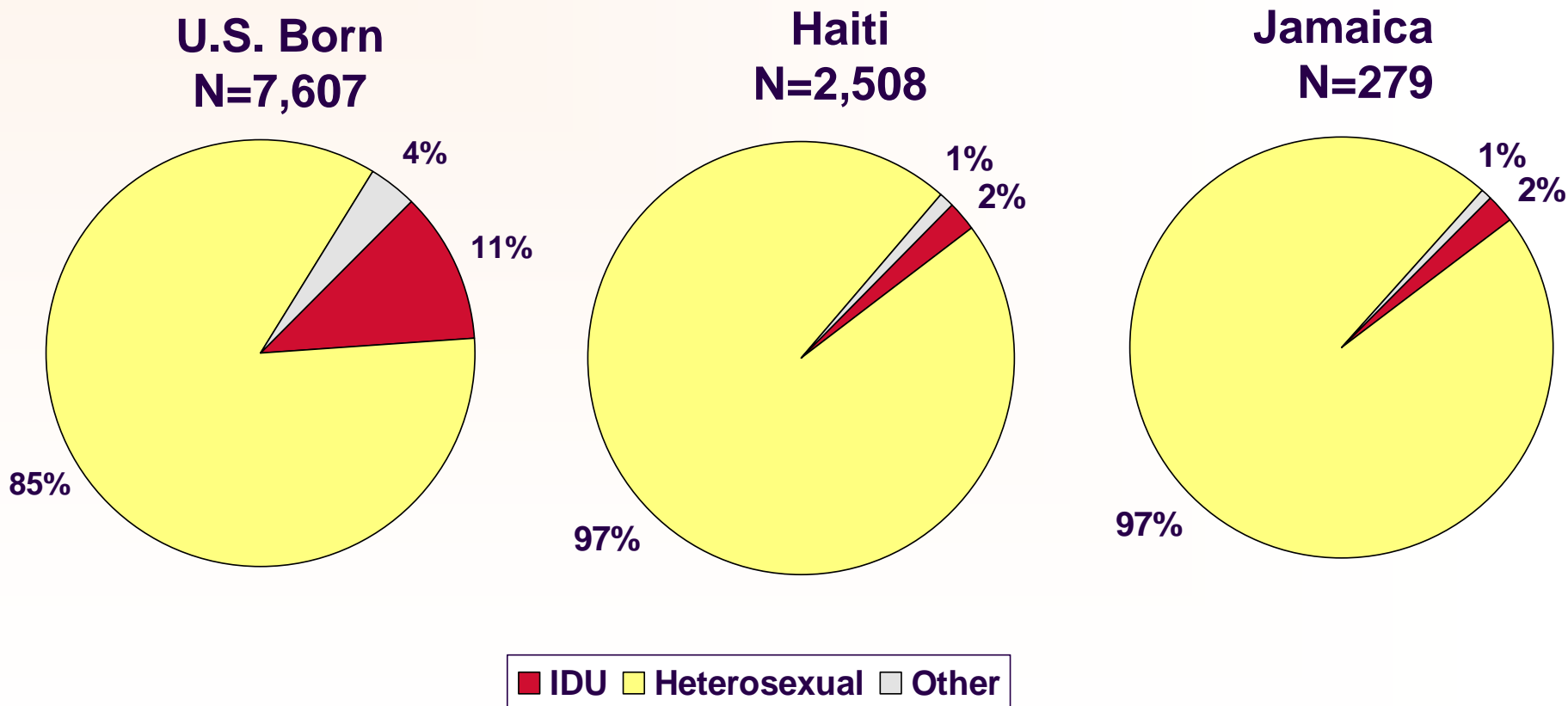
Note: NIRs redistributed. Female US-born cases were more likely to be injection drug users than their Haitian-born or Jamaican-born counterparts.

# Black Adult Males Living with HIV Disease, by Selected Country of Birth and Mode of Exposure, Reported Through 2010, South Florida\*



Note: NIRs redistributed. Heterosexual contact is a much more common risk factor among male cases born in Haiti and Jamaica, compared to US-born cases.

# Black Adult Females Living with HIV Disease, by Selected Country of Birth and Mode of Exposure, Reported Through 2010, South Florida\*

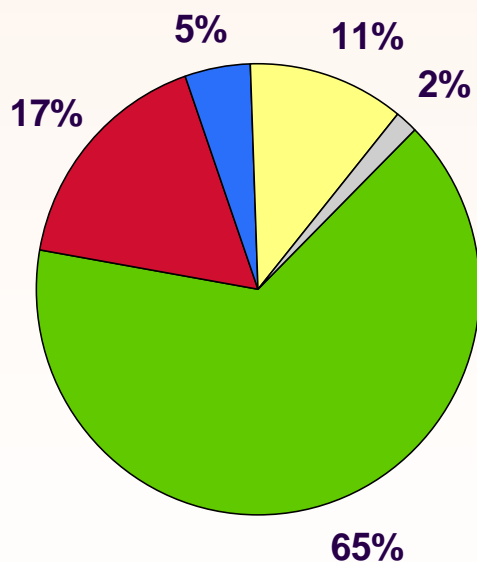


Note: NIRs redistributed. Female US-born cases were more likely to be injection drug users than their Haitian-born or Jamaican-born counterparts.

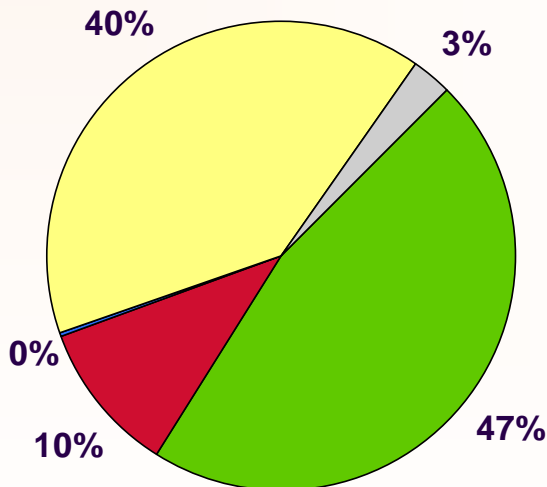
\*South Florida = Dade, Broward, and Palm Beach Counties (excl DOC) Note: NIRs redistributed.

# Black Adult Males Living with HIV Disease, by Selected Country of Birth and Mode of Exposure, Reported Through 2010, Central Florida\*

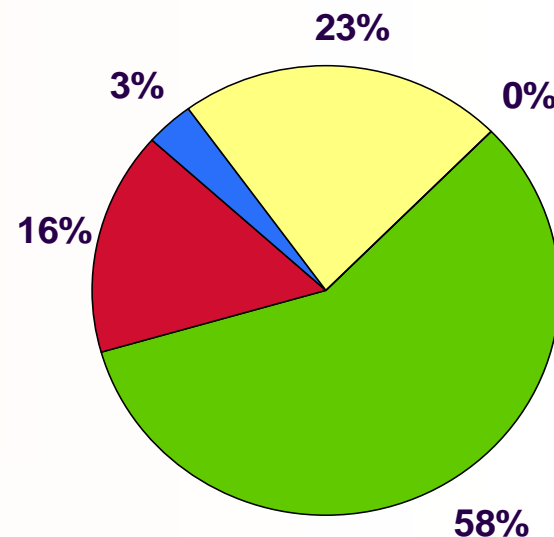
**U.S. Born  
N=1,501**



**Haiti  
N=287**



**Jamaica  
N=31**

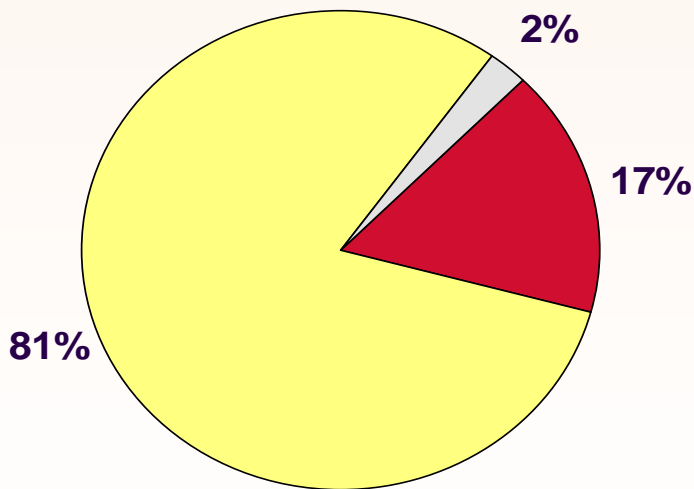


**Note: NIRs redistributed. Heterosexual contact is a much more common risk factor among male cases born in Haiti and Jamaica, compared to US-born cases.**

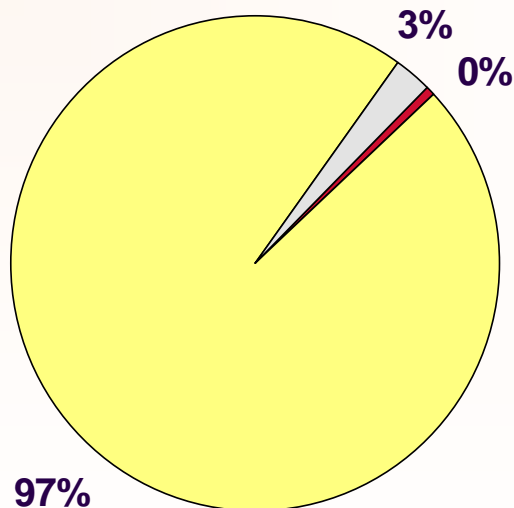
**\*Central Florida = Orange, Osceola and Seminole Counties (excl DOC) Note: NIRs redistributed.**

# Black Adult Females Living with HIV Disease, by Selected Country of Birth and Mode of Exposure, Reported Through 2010, Central Florida\*

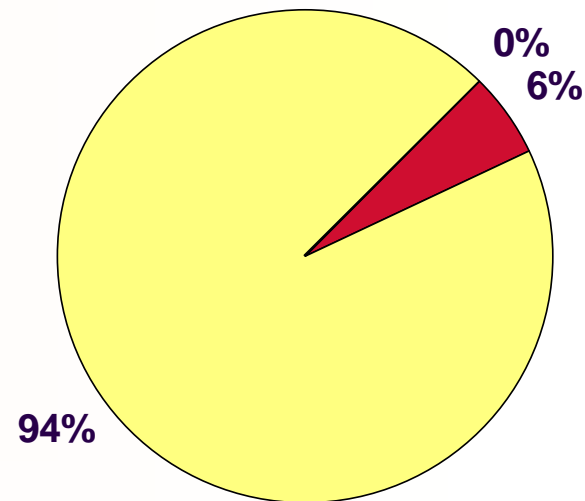
**U.S. Born  
N=923**



**Haiti  
N=233**



**Jamaica  
N=18**



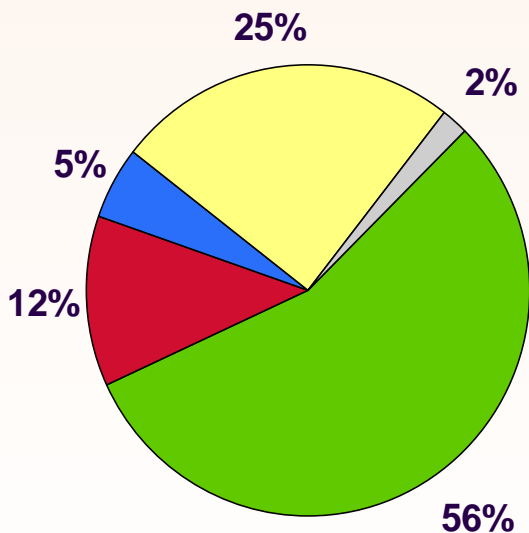
■ IDU
 ■ Heterosexual
 ■ Other

Note: NIRs redistributed. Female US-born cases were more likely to be injection drug users than their Haitian-born or Jamaican-born counterparts.

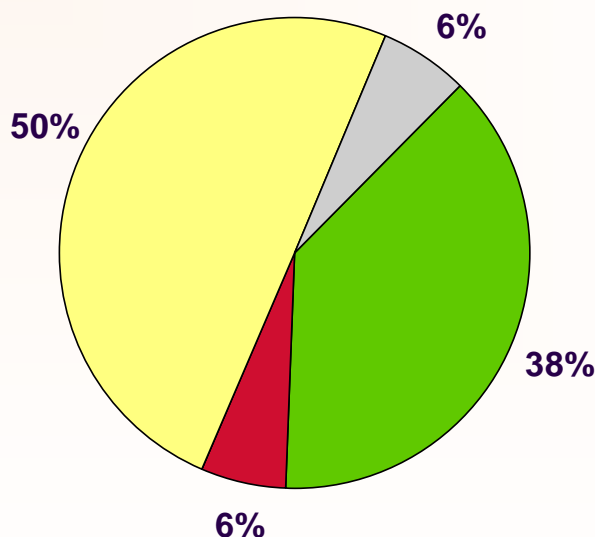
\*Central Florida = Orange, Osceola and Seminole Counties (excl DOC) Note: NIRs redistributed.

# Black Adult Males Living with HIV Disease, by Selected Country of Birth and Mode of Exposure, Reported Through 2010, Southwest Florida\*

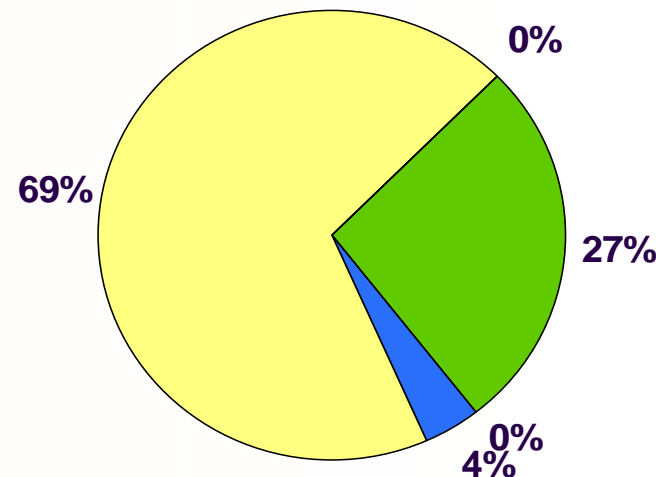
U.S. Born  
N=1,861



Haiti  
N=49



Jamaica  
N=26

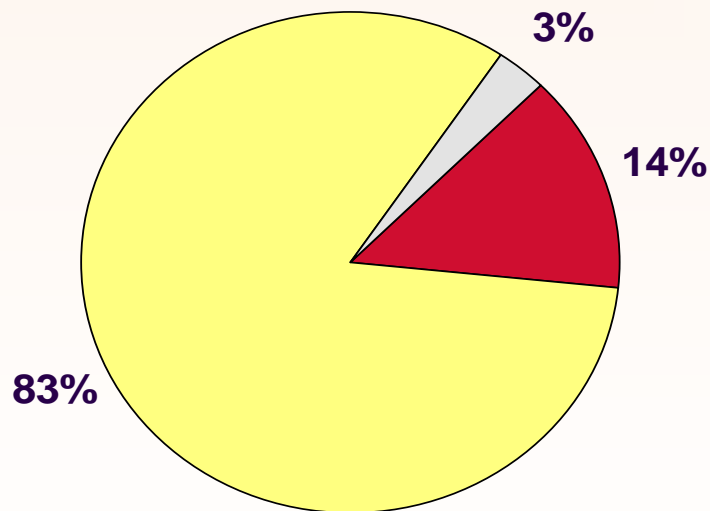


Note: NIRs redistributed. Heterosexual contact is a much more common risk factor among male cases born in Haiti and Jamaica, compared to US-born cases. Note: NIRs redistributed.

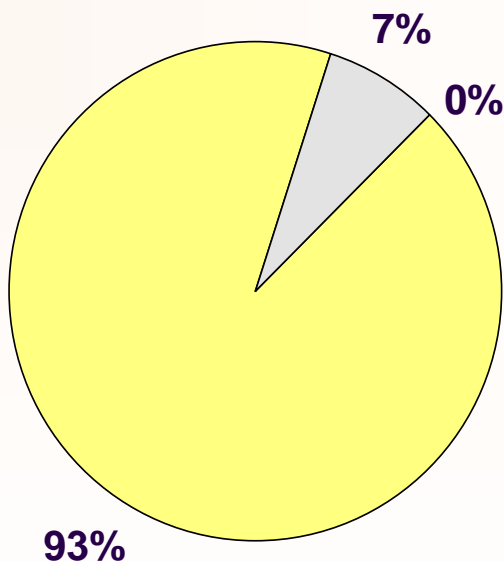
\*Southwest Florida = Hernando, Hillsborough, Pasco and Pinellas Counties (excl DOC)

# Black Adult Females Living with HIV Disease, by Selected Country of Birth and Mode of Exposure, Reported Through 2010, Southwest Florida\*

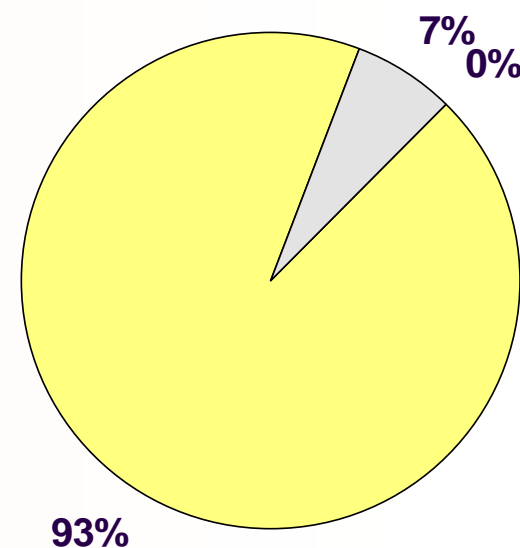
U.S. Born  
N=1,333



Haiti  
N=27



Jamaica  
N=12



■ IDU ■ Heterosexual ■ Other

Note: NIRs redistributed. Female US-born cases were more likely to be injection drug users than their Haitian-born or Jamaican-born counterparts.

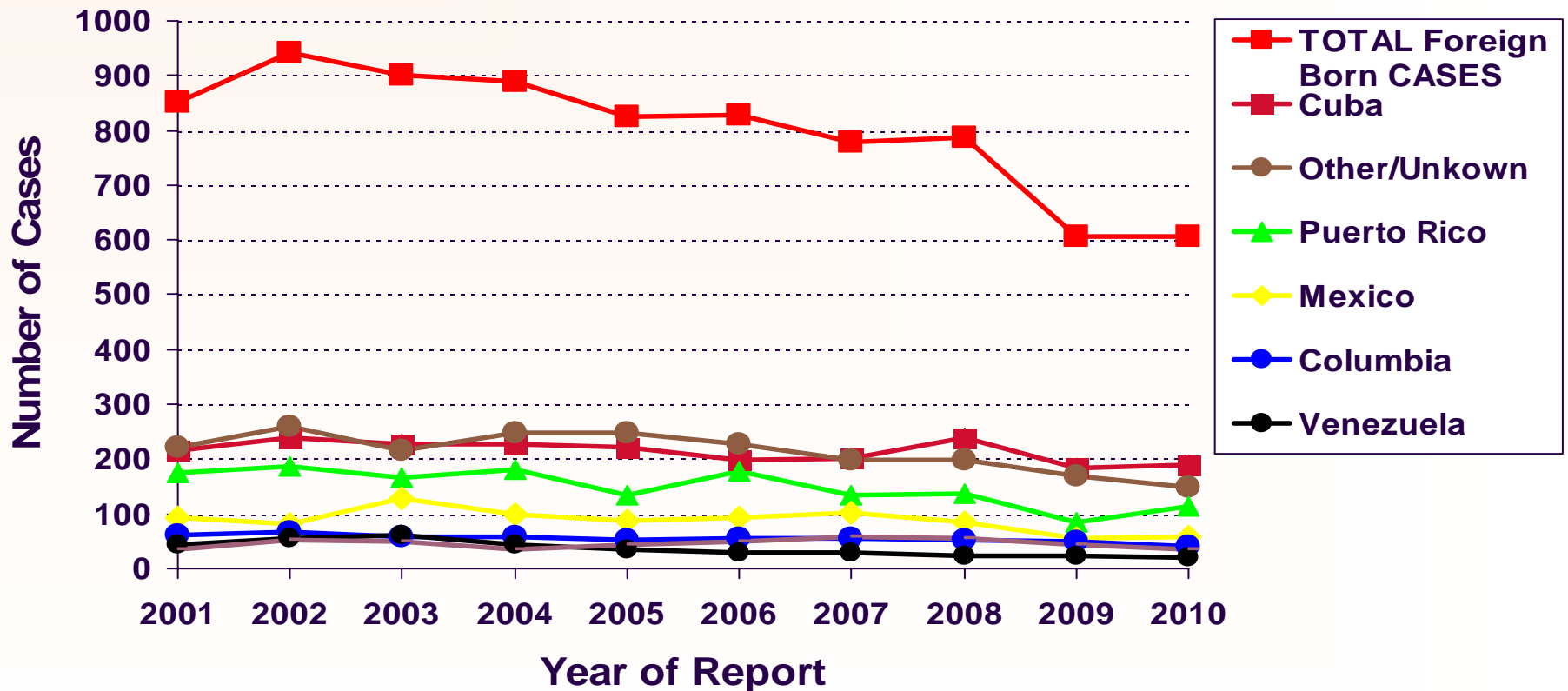
\*Southwest Florida = Hernando, Hillsborough, Pasco, and Pinellas Counties (excl DOC)

# Black Adults Living with HIV Disease by Country of Birth Mode of Exposure\* and Sex Reported through 2010, Florida

Country of Birth	US		Haiti		Jamaica		Other/Unknown		Total	
	#	%	#	%	#	%	#	%	#	%
<b>MALES</b>										
MSM	9,366	45%	857	22%	180	33%	313	44%	10,716	42%
IDU	2,794	14%	133	3%	33	6%	47	7%	3,007	12%
MSM/IDU	1,171	6%	35	1%	11	2%	32	5%	1,249	5%
Heterosexual	6,867	33%	2,772	72%	316	58%	295	42%	10,250	40%
Other/Unknown	405	2%	34	1%	1	0%	22	3%	462	2%
<b>TOTAL</b>	<b>20,603</b>	<b>100%</b>	<b>3,831</b>	<b>100%</b>	<b>541</b>	<b>100%</b>	<b>709</b>	<b>100%</b>	<b>25,684</b>	<b>100%</b>
Country of Birth	US		Haiti		Jamaica		Other/Unknown		Total	
	#	%	#	%	#	%	#	%	#	%
<b>FEMALES</b>										
IDU	1,894	13%	65	2%	7	2%	45	8%	2,011	11%
Heterosexual	12,703	84%	3,005	96%	335	97%	528	90%	16,571	87%
Other/Unknown	485	3%	48	2%	3	1%	16	3%	552	3%
<b>TOTAL</b>	<b>15,082</b>	<b>100%</b>	<b>3,118</b>	<b>100%</b>	<b>345</b>	<b>100%</b>	<b>589</b>	<b>100%</b>	<b>19,134</b>	<b>100%</b>
*NIRS are redistributed										

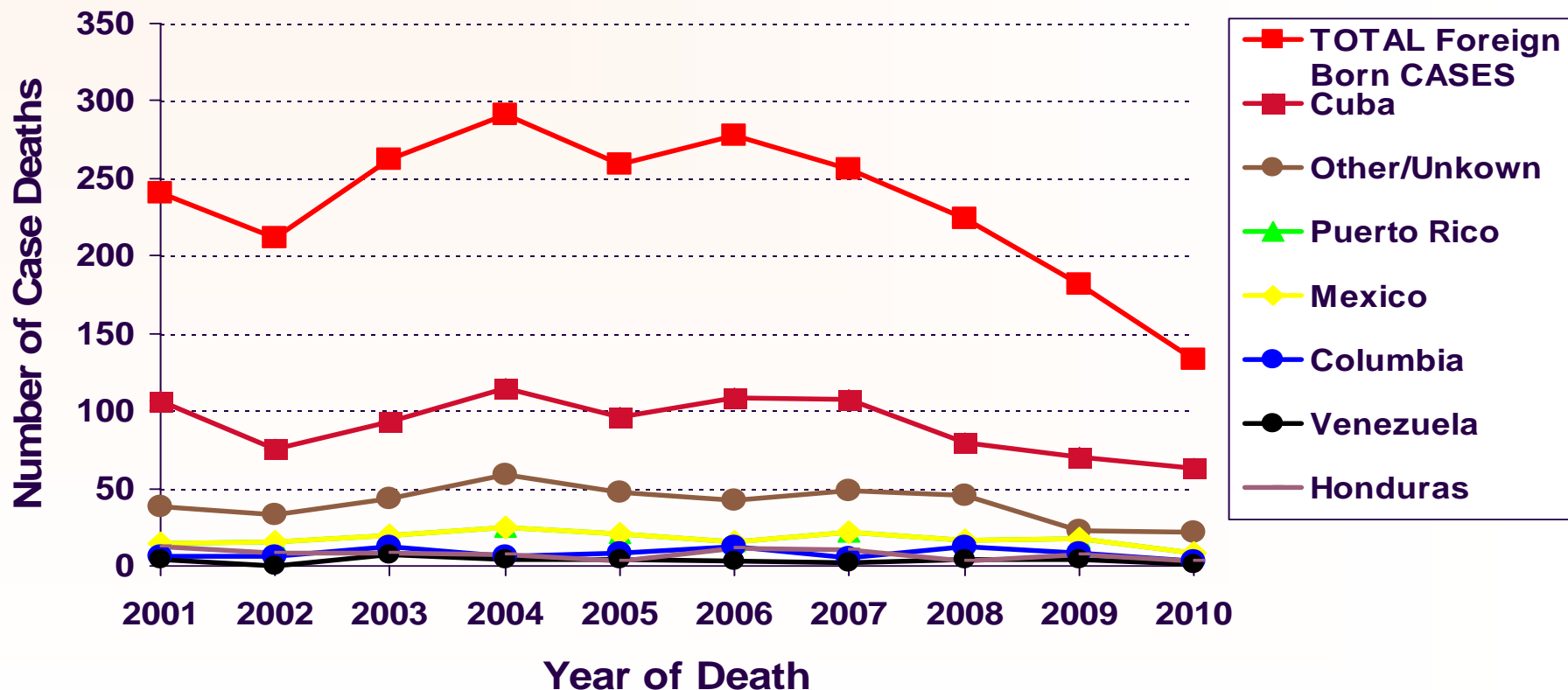
**Impact of HIV Disease  
among Hispanics,  
by Country of Birth  
in Florida,  
Reported Through 2010**

# Hispanic Foreign-Born HIV/AIDS Cases, by Country of Birth and Year of Report, 2001-2010, Florida



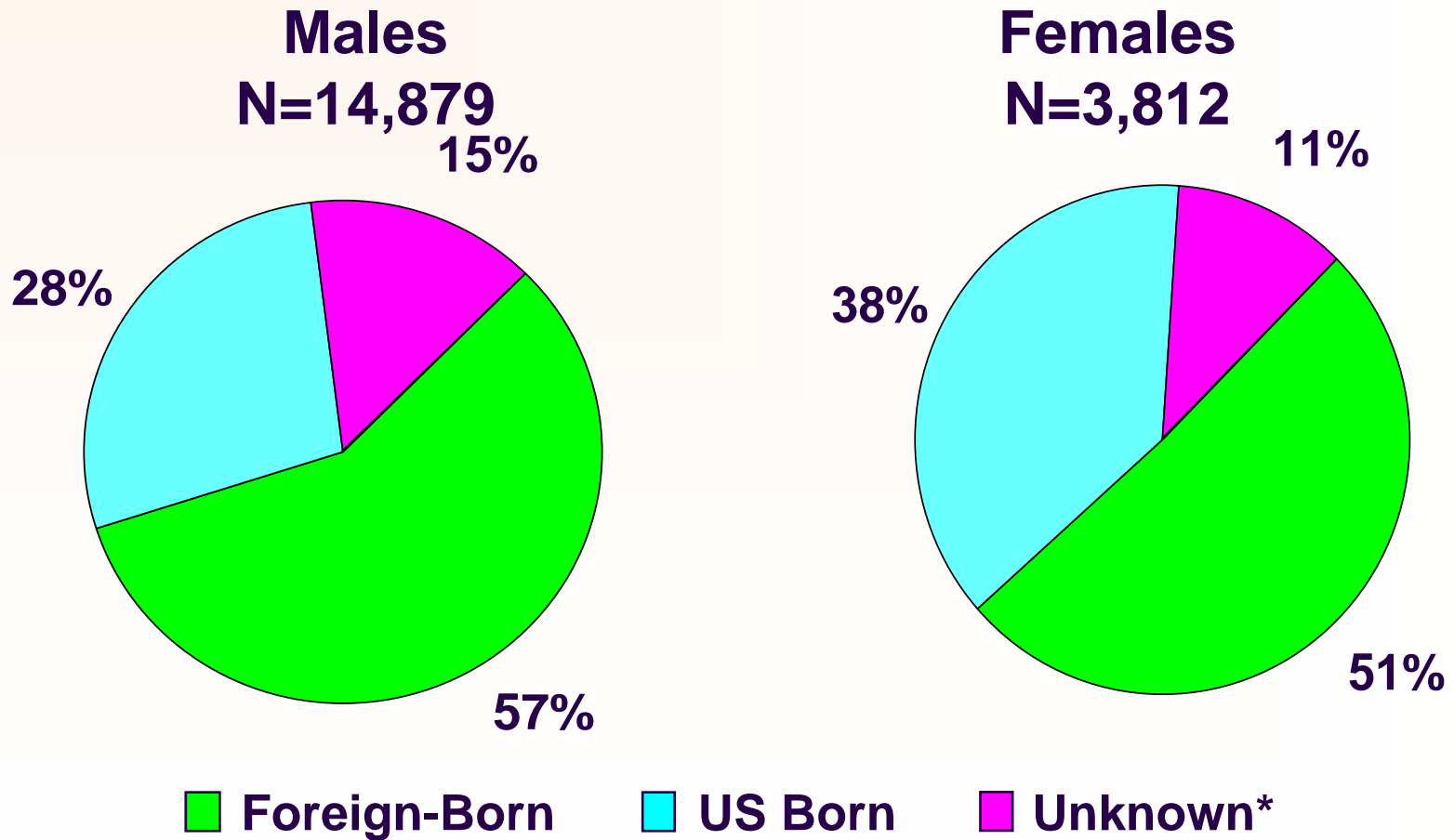
Note: Each year, the majority of Hispanic foreign born HIV/AIDS cases with a known country of birth were Cuban born. Enhanced reporting laws were implemented in Nov. 2006, leading to an artificial peak in HIV cases in 2007 & 2008.

# Hispanic Foreign-Born, Adult HIV/AIDS Cases, Known Dead, Regardless of Cause, by Country of Birth and Year of Death, Florida, 2000-2010



Note: Each year, the majority of Hispanic foreign born HIV/AIDS case deaths with a known country of birth were Cuban born. Enhanced reporting laws were implemented in Nov. 2006, leading to an artificial peak in HIV cases in 2007 & 2008.

# Hispanic Adults Living with HIV Disease, by Country of Birth & Sex, Reported through 2010, Florida

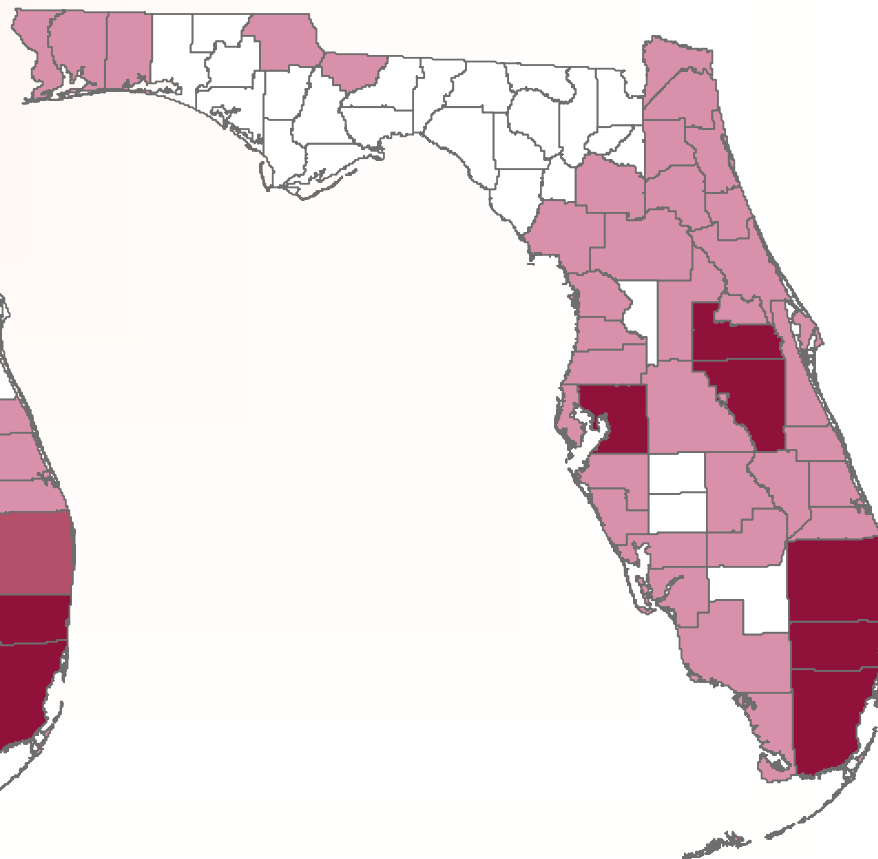
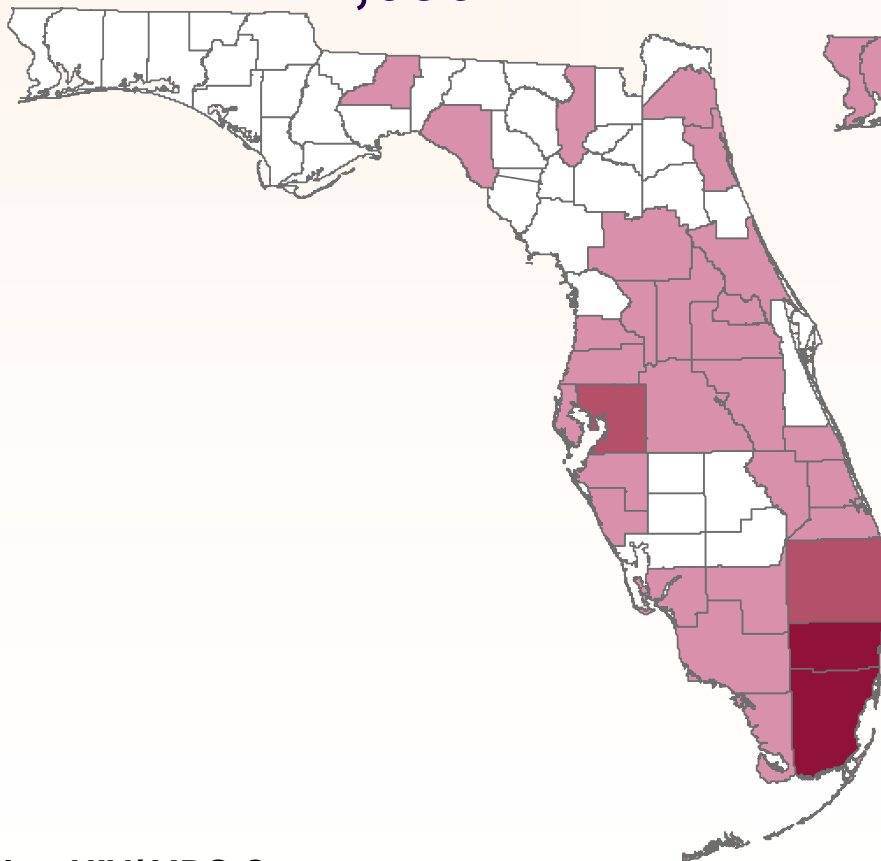


The majority (57% for males and 51% for females) of Hispanics living with HIV disease in Florida were foreign born.

# Hispanic Adults Living with HIV Disease, by Selected Country of Birth, Reported through 2010, Florida

**Cuba**  
**N=2,686**

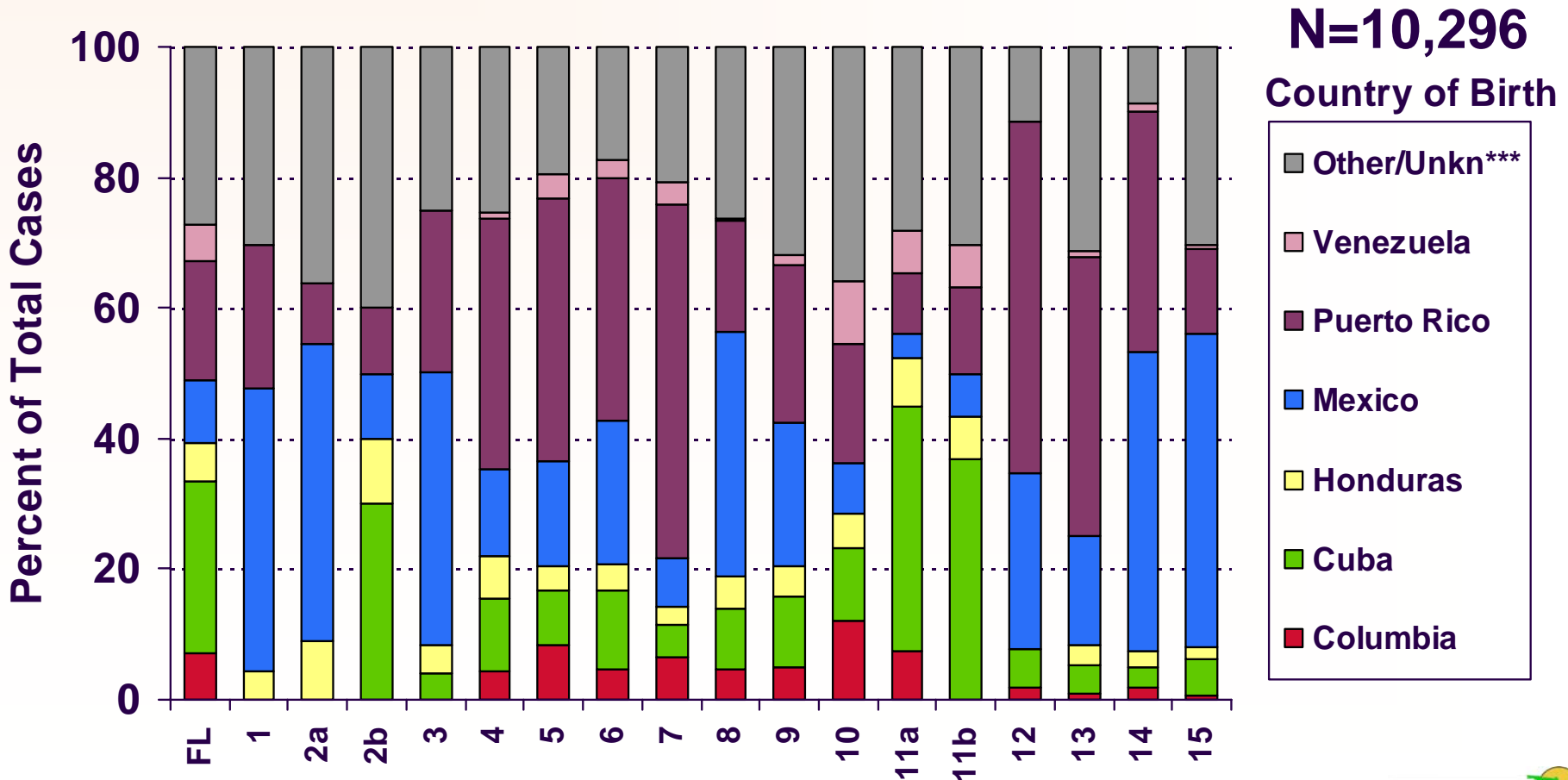
**Puerto Rico**  
**N=1,831**



Living HIV/AIDS Cases



# Non-U.S. Born Hispanics Living with HIV Disease, by Country of Birth, by Reporting Area, Reported Through 2010, Florida



# Hispanic Adults Living with HIV Disease, by Country of Birth\*, reported through 2010, for Florida and Selected South Florida Counties\*\*

Country of Birth	Florida		Miami-Dade		Broward		Palm Beach	
	#	%	#	%	#	%	#	%
United States	5,612	39%	1,809	27%	668	44%	323	43%
Cuba	2,753	19%	2,303	34%	127	8%	55	7%
Puerto Rico	1,900	13%	557	8%	205	13%	123	16%
Mexico	1,023	7%	246	4%	88	6%	113	15%
Colombia	740	5%	459	7%	134	9%	26	3%
Honduras	626	4%	452	7%	57	4%	23	3%
Venezuela	575	4%	403	6%	109	7%	7	1%
Nicaragua	403	3%	349	5%	19	1%	6	1%
Brazil	330	2%	151	2%	96	6%	23	3%
Guatemala	302	2%	96	1%	22	1%	57	8%
Other	1,836	13%	1,144	17%	265	17%	77	10%
<b>TOTAL</b>	<b>14,264</b>	<b>100%</b>	<b>6,825</b>	<b>100%</b>	<b>1,525</b>	<b>100%</b>	<b>756</b>	<b>100%</b>

\*Data sorted by foreign country of birth by number of cases, and excludes cases whose country of birth is unknown.

\*\*County data exclude Department of Correction cases.

# Hispanic Adults Living with HIV Disease by Country of Birth, Reported and Alive Through 2010 U.S.\*, Florida and South Florida Counties\*\*

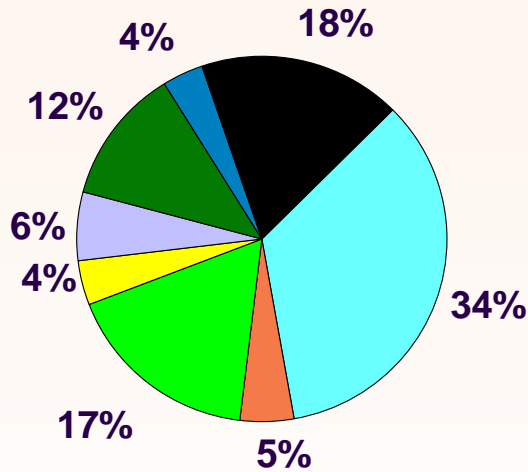
Country of Birth	United States		Florida		Miami-Dade		Broward	
	#	%	#	%	#	%	#	%
United States	2,578	33%	5,612	35%	1,809	23%	668	37%
Cuba	172	2%	2,753	17%	2,303	29%	127	7%
Puerto Rico	1,204	15%	1,900	12%	557	7%	205	11%
Other	2,448	31%	2,871	18%	1,740	22%	402	22%
Mexico	1,458	19%	1,023	6%	246	3%	88	5%
<b>TOTAL</b>	<b>7,860</b>	<b>100%</b>	<b>16,100</b>	<b>100%</b>	<b>7,969</b>	<b>100%</b>	<b>1,790</b>	<b>100%</b>

\* U.S. data ONLY represents AIDS dx in 2008, for data comparison purposes.

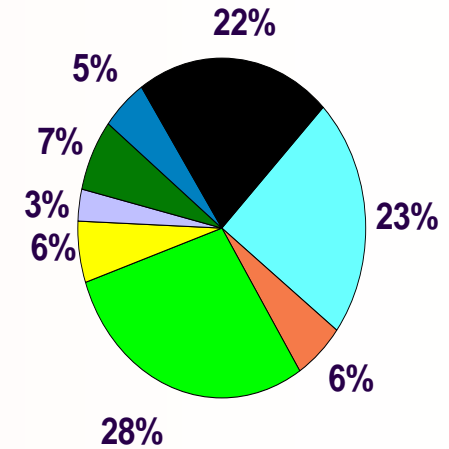
\*\*County data exclude Department of Correction cases.

# Living Hispanic Adults Living with HIV Disease by Country of Birth, Reported through 2010 Florida and South Florida Counties

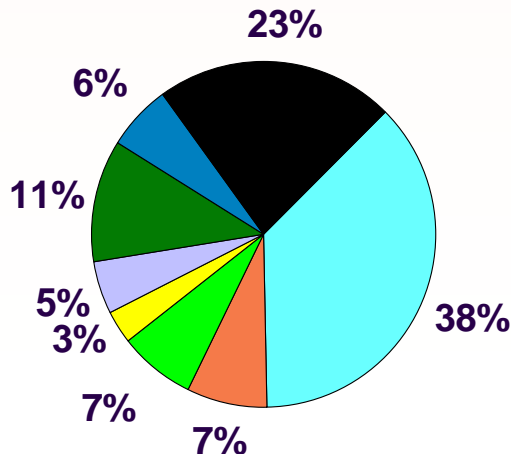
**Florida (N=16,100)**



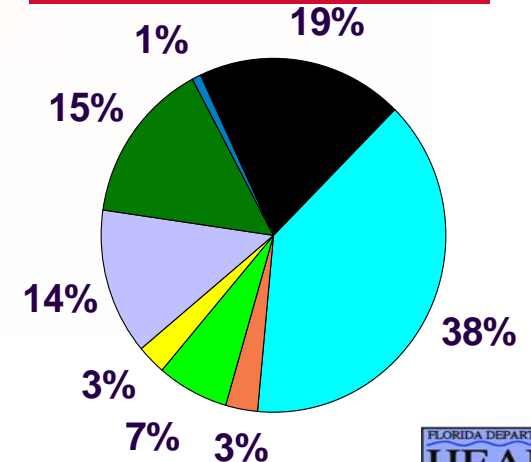
**Miami-Dade (N=7,969)**



**Broward (N=1,790)**



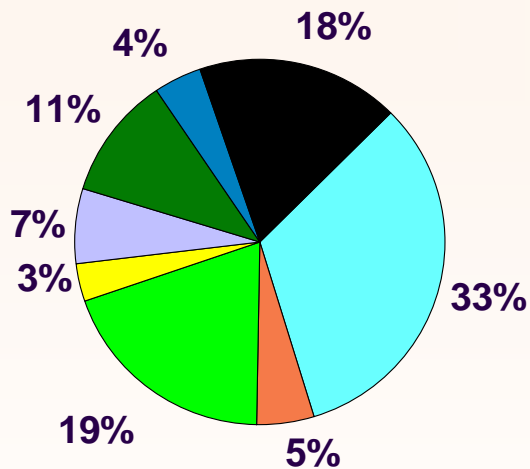
**Palm Beach (N=833)**



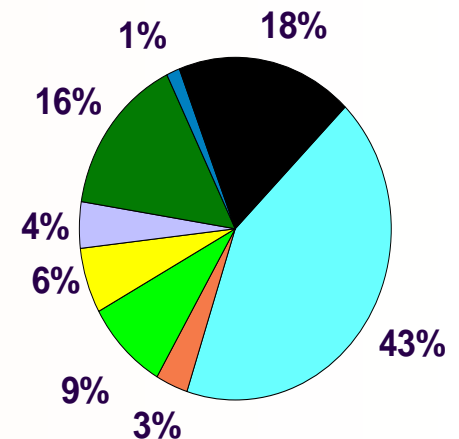
# Hispanic Adults Living with HIV Disease by Country of Birth and Sex Reported through 2010, Florida & South Florida

**Males (N=12,720)**

## Florida

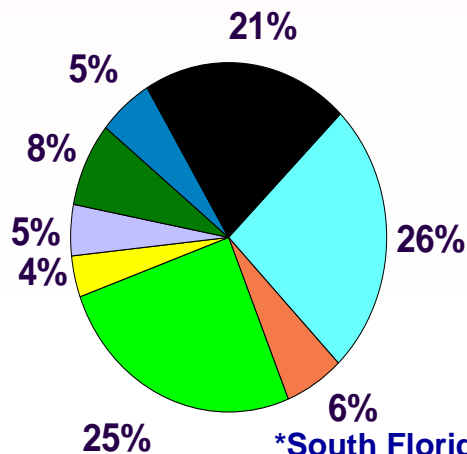


**Females (N=3,380)**

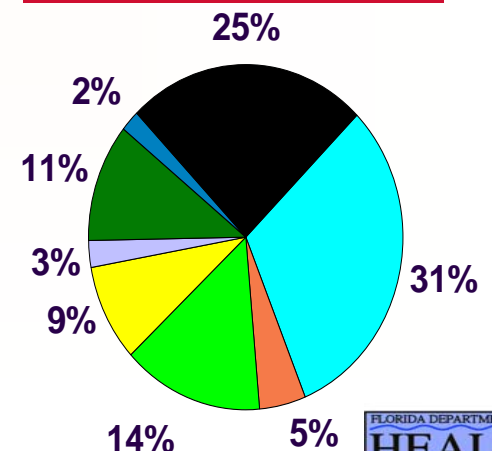


**Males (N=8,714)**

## South Florida



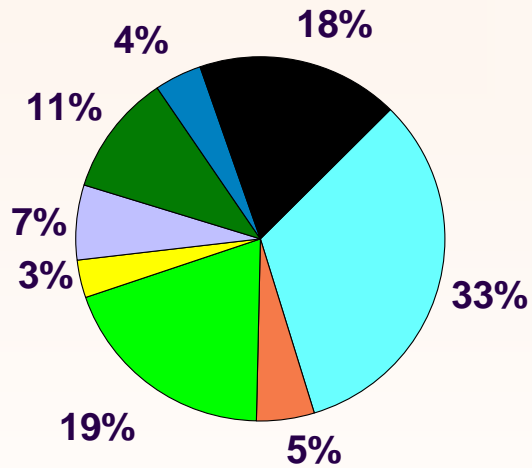
**Females (N=1,878)**



\*South Florida = Dade, Broward, and Palm Beach Counties (excl DOC)

# Hispanic Adults Living with HIV Disease by Country of Birth and Sex Reported through 2010, Florida & Central Florida

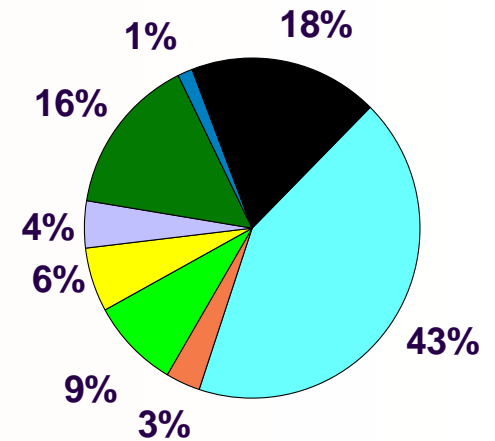
**Males (N=12,720)**



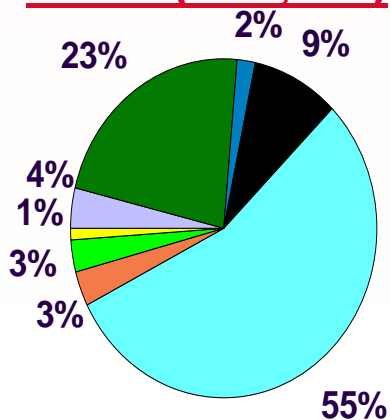
## Florida



**Females (N=3,380)**

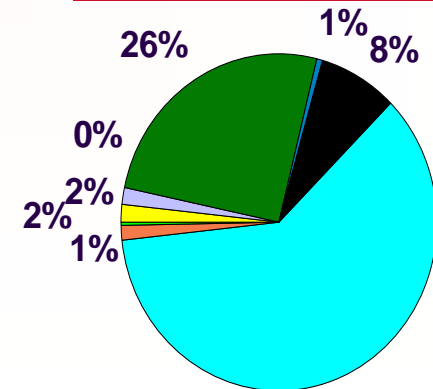


**Males (N=1,304)**



## Central Florida

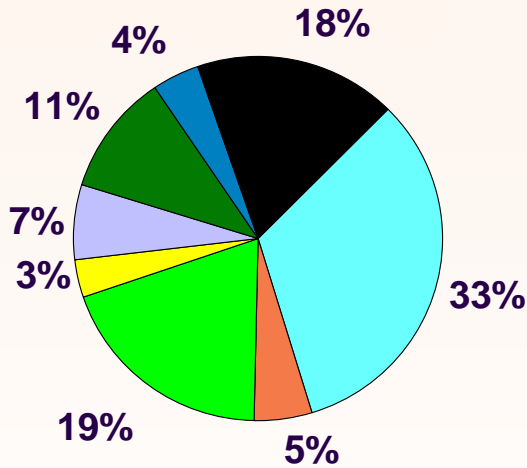
**Females (N=516)**



\*Central Florida = Orange, Osceola and Seminole Counties (excl DOC)

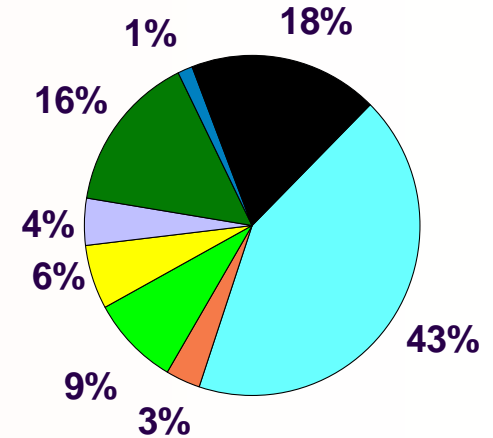
# Hispanic Adults Living with HIV Disease by Country of Birth and Sex Reported through 2010, Florida & Southwest Florida

**Males (N=12,720)**

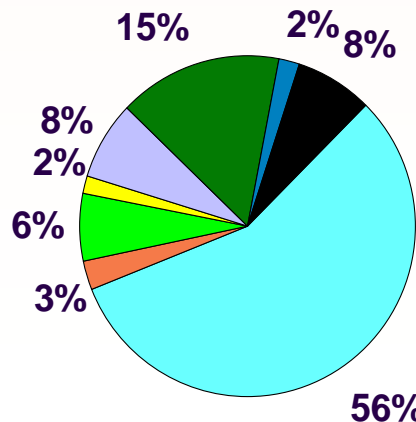


## Florida

**Females (N=3,380)**

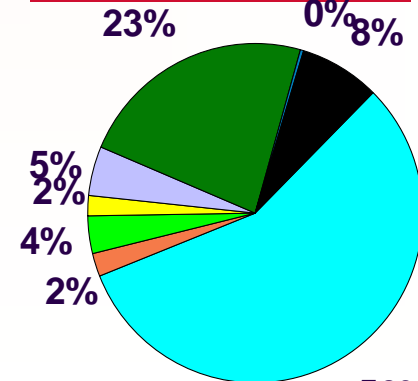


**Males (N=851)**



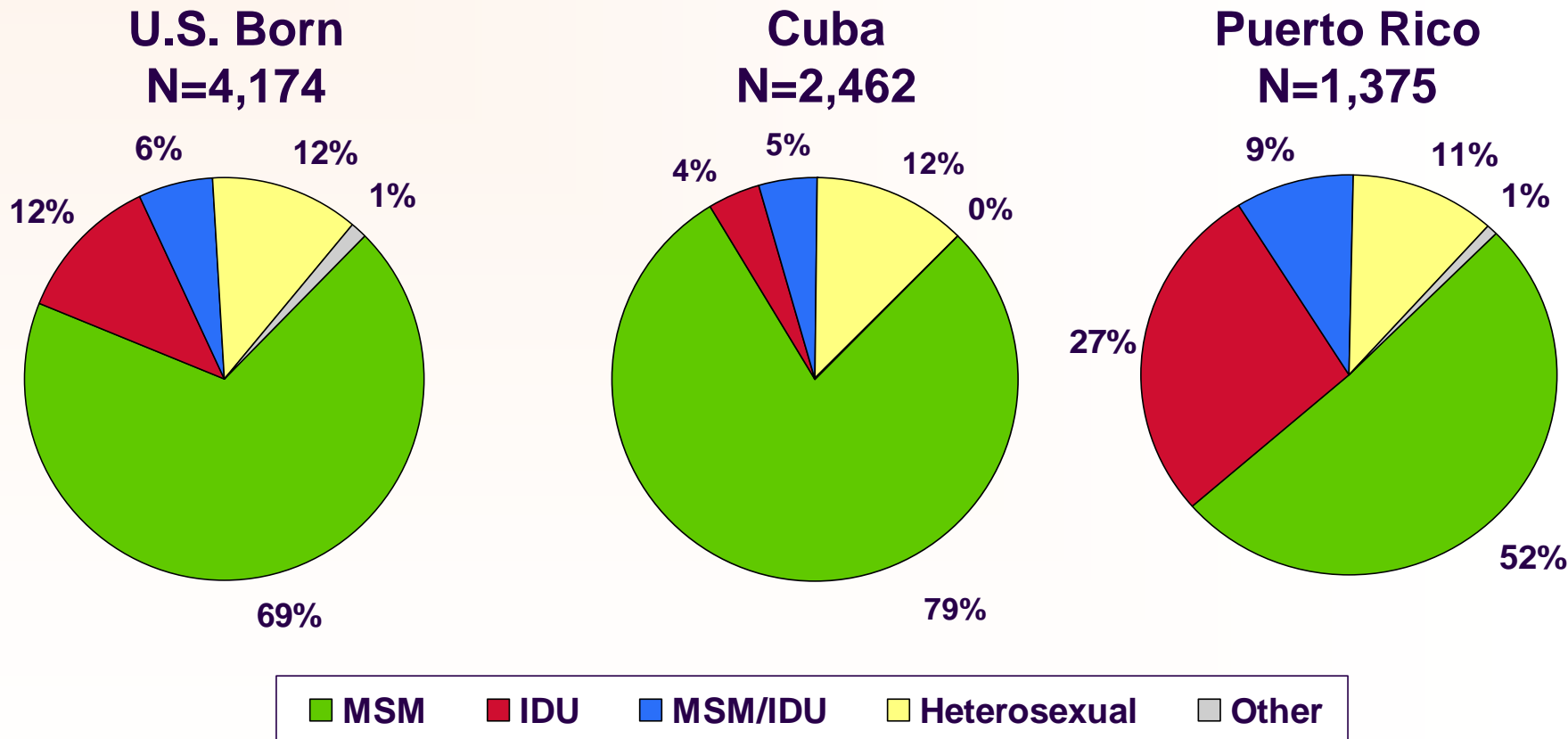
## Southwest Florida

**Females (N=384)**



\*Southwest Florida = Hernando, Hillsborough, Pasco and Pinellas Counties (excl DOC)

# Hispanic Adult Males Living with HIV Disease, by Selected Country of Birth and Mode of Exposure, Reported through 2010, Florida



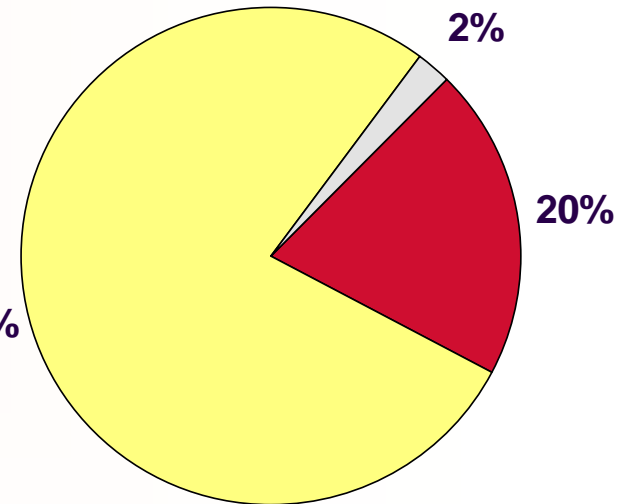
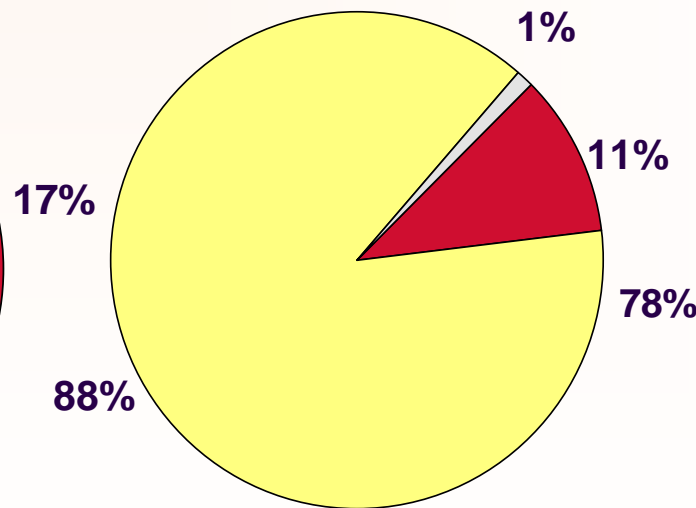
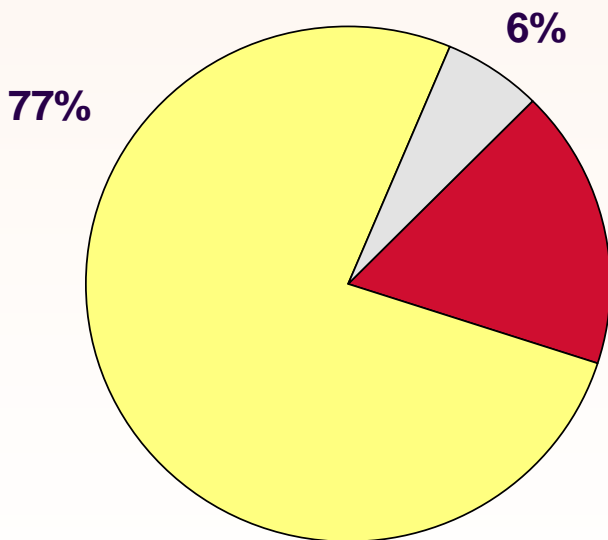
Note: NIRs redistributed. Injection drug use is a much more common risk factor among male cases born in Puerto Rico, while MSM cases were more predominant among Cuban-born and US-born cases.

# Hispanic Adult Females Living with HIV Disease, by Selected Country of Birth and Mode of Exposure, Reported through 2010, Florida

**U.S. Born**  
N=1,438

**Cuba**  
N=291

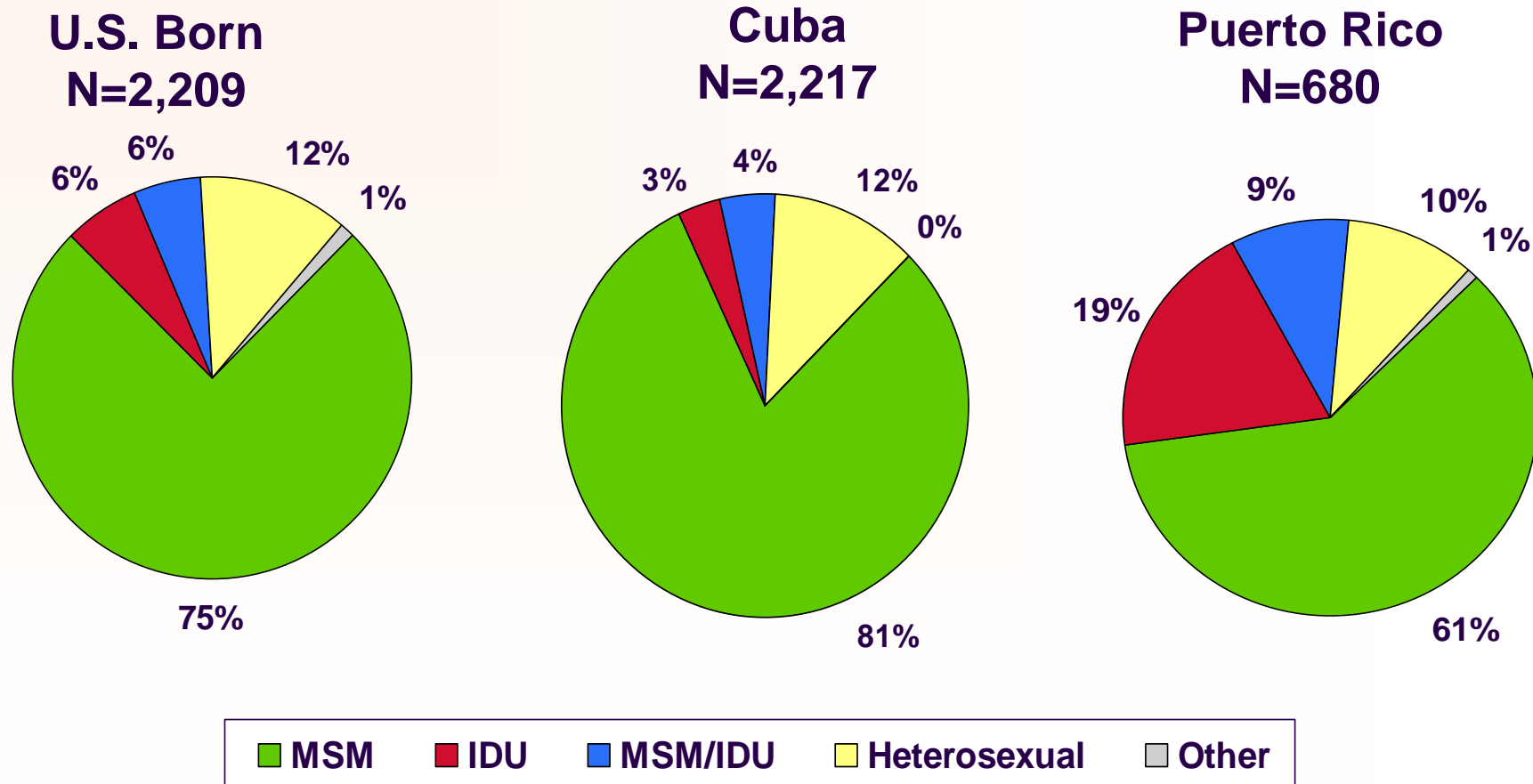
**Puerto Rico**  
N=525



■ IDU ■ Heterosexual ■ Other

Note: NIRs redistributed. Female Cuban-born cases were less likely to be injection drug users than their U.S.-born or Puerto Rico-born counterparts.

# Hispanic Adult Males Living with HIV Disease by Selected Country of Birth and Mode of Exposure Reported through 2010, South Florida\*

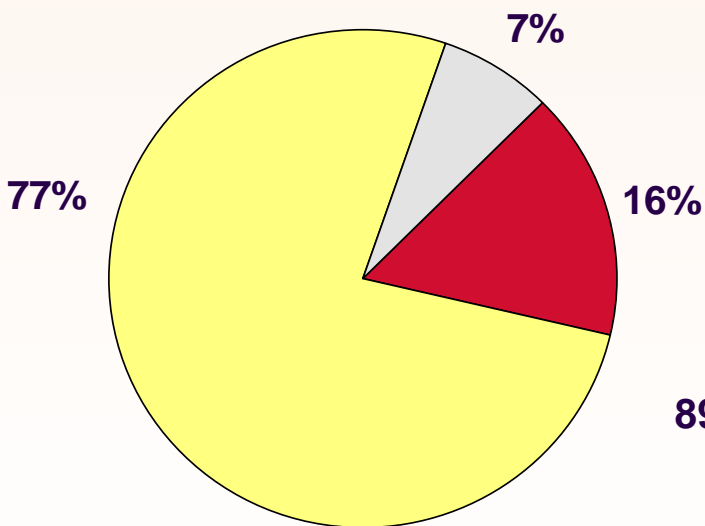


Note: NIRs redistributed. Injection drug use is a much more common risk factor among male cases born in Puerto Rico, while MSM cases were more predominant among Cuban-born and US-born cases.

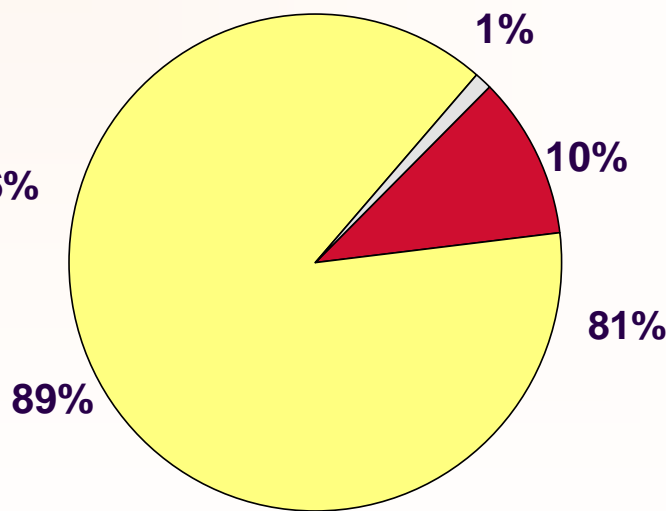
\*South Florida = Dade, Broward, and Palm Beach Counties (excl DOC)

# Hispanic Adult Females Living with HIV Disease by Selected Country of Birth and Mode of Exposure Reported through 2010, South Florida\*

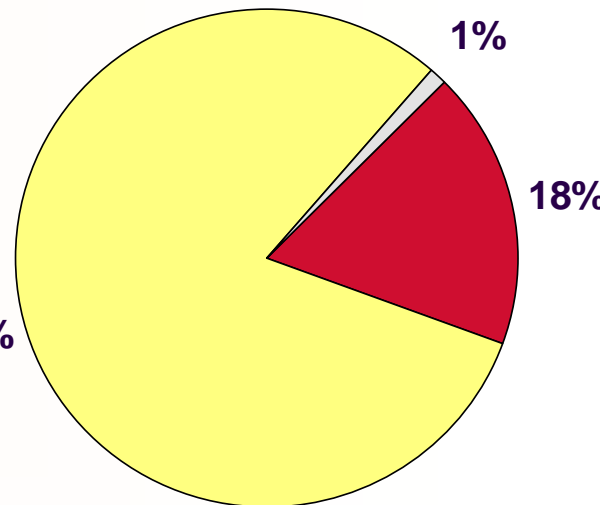
**U.S. Born  
N=591**



**Cuba  
N=268**



**Puerto Rico  
N=205**

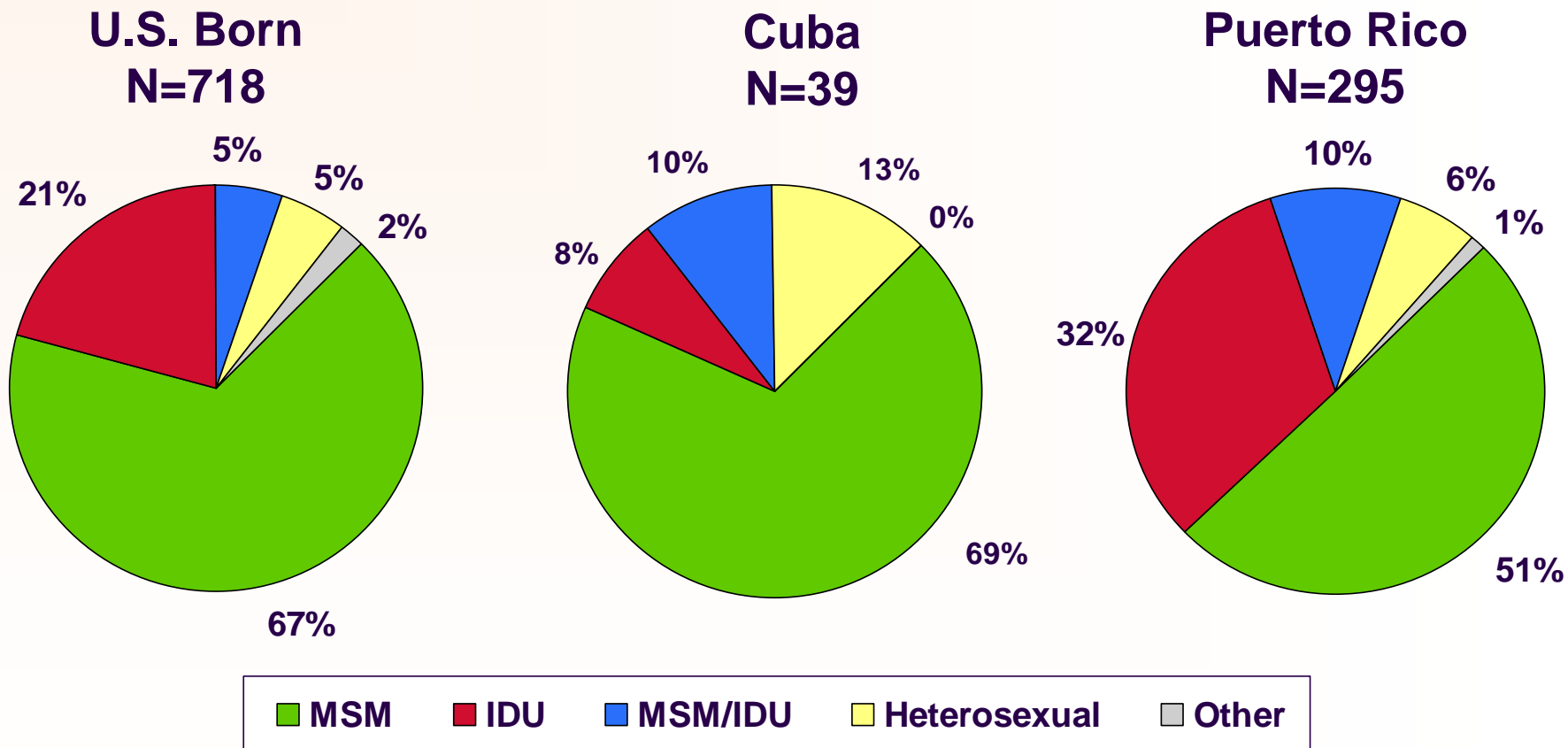


■ IDU ■ Heterosexual ■ Other

Note: NIRs redistributed. Female Cuban-born cases were less likely to be injection drug users than their U.S.-born or Puerto Rico-born counterparts.

\*South Florida = Dade, Broward, and Palm Beach Counties (excl DOC)

# Hispanic Adult Males Living with HIV Disease by Selected Country of Birth and Mode of Exposure Reported through 2010, Central Florida\*

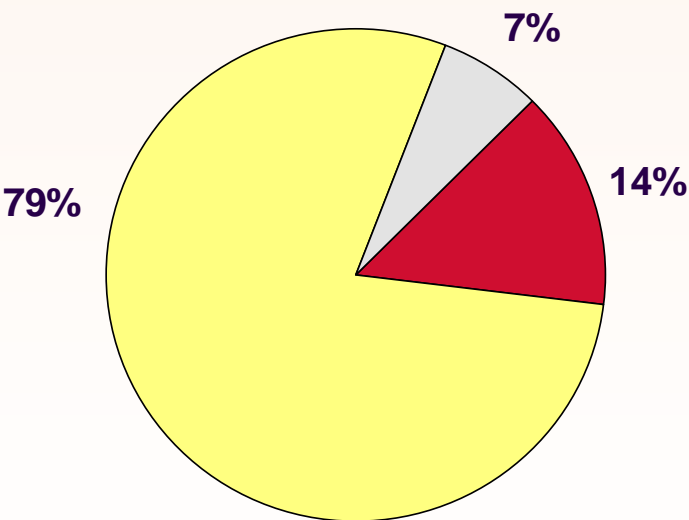


Note: NIRs redistributed. Injection drug use is a much more common risk factor among male cases born in Puerto Rico, while MSM cases were more predominant among Cuban-born and US-born cases.

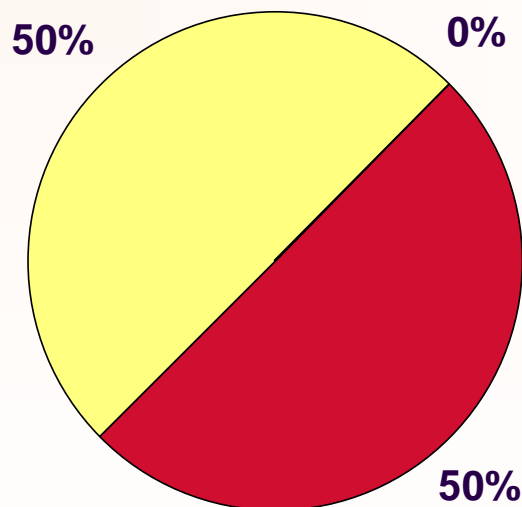
\*Central Florida = Orange, Osceola and Seminole Counties (excl DOC)

# Hispanic Adult Females Living with HIV Disease by Selected Country of Birth and Mode of Exposure Reported through 2010, Central Florida\*

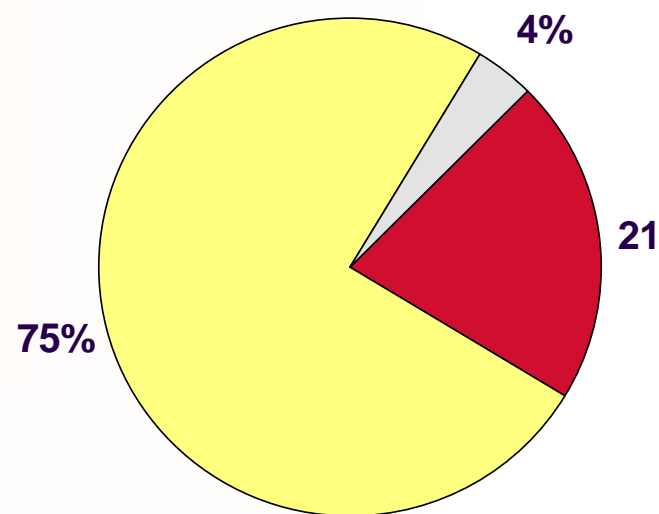
**U.S. Born  
N=314**



**Cuba  
N=2**



**Puerto Rico  
N=132**

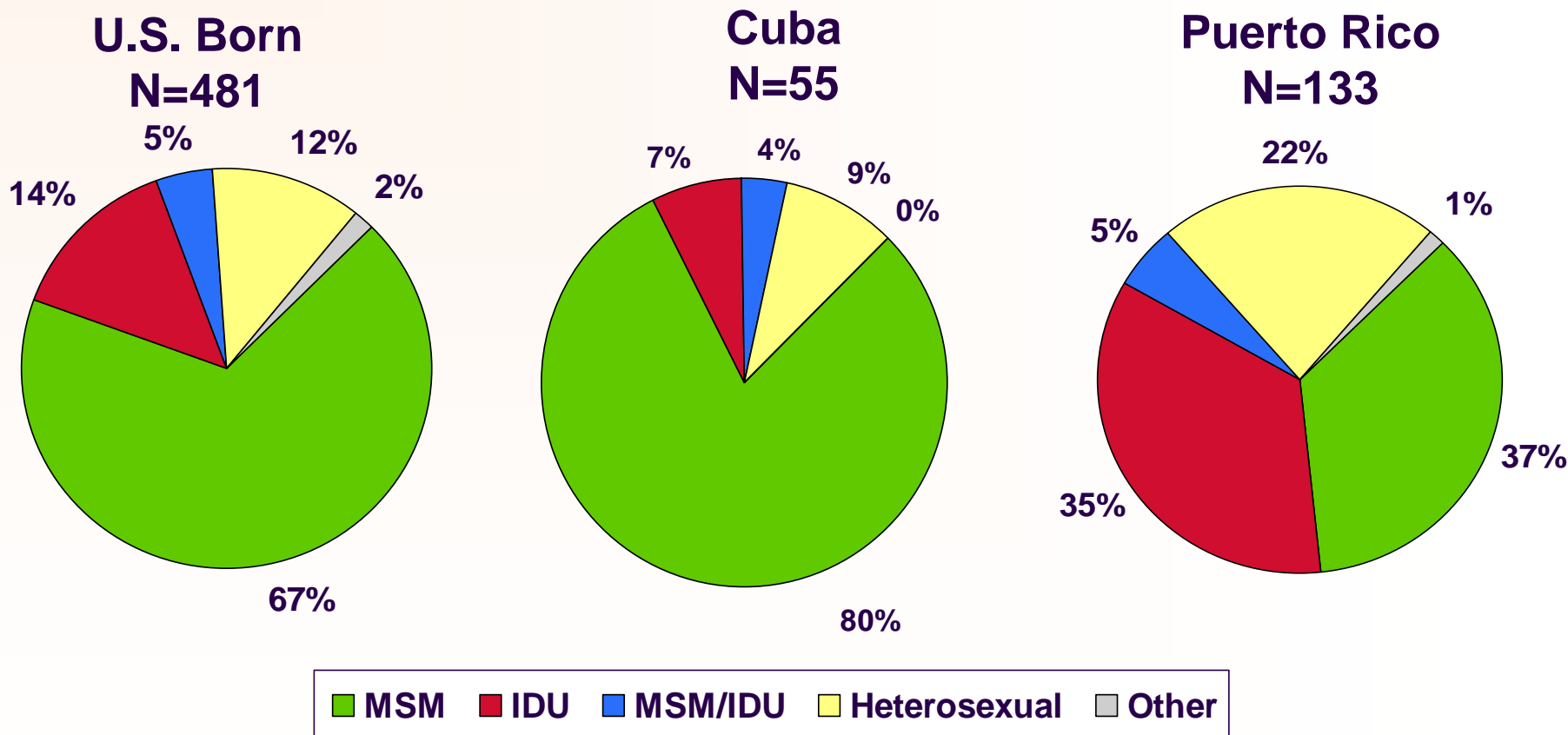


■ IDU 
 ■ Heterosexual 
 ■ Other

Note: NIRs redistributed. Female Cuban-born cases were less likely to be injection drug users than their U.S.-born or Puerto Rico-born counterparts.

\*Central Florida = Orange, Osceola and Seminole Counties (excl DOC)

# Hispanic Adult Males Living with HIV Disease by Selected Country of Birth and Mode of Exposure Reported through 2010, Southwest Florida\*



Note: NIRs redistributed. Injection drug use is a much more common risk factor among male cases born in Puerto Rico, while MSM cases were more predominate among Cuban-born and US-born cases.

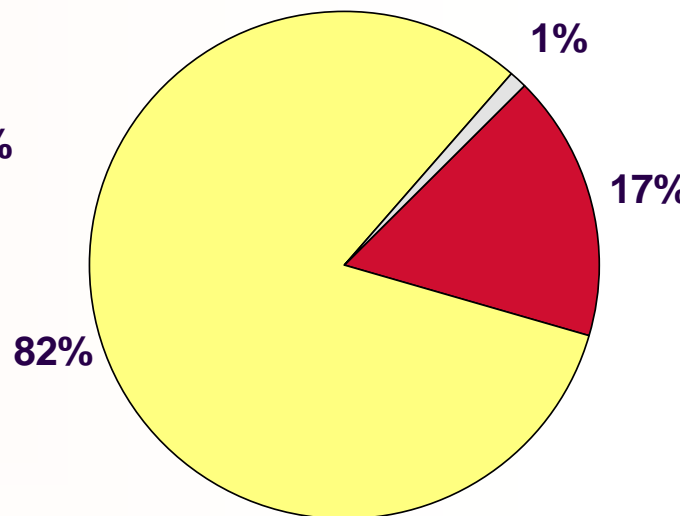
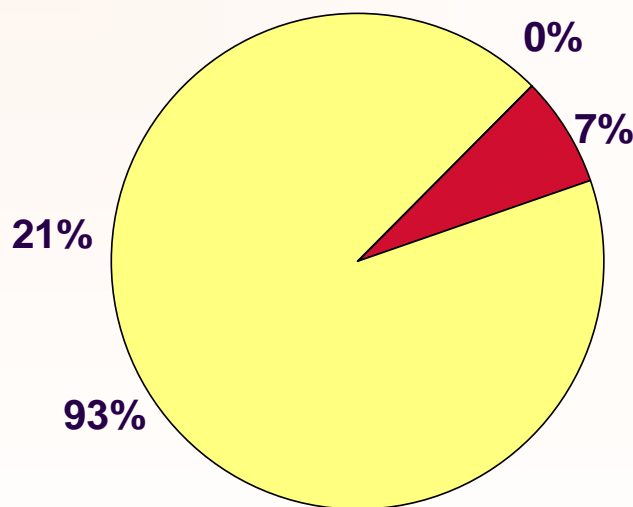
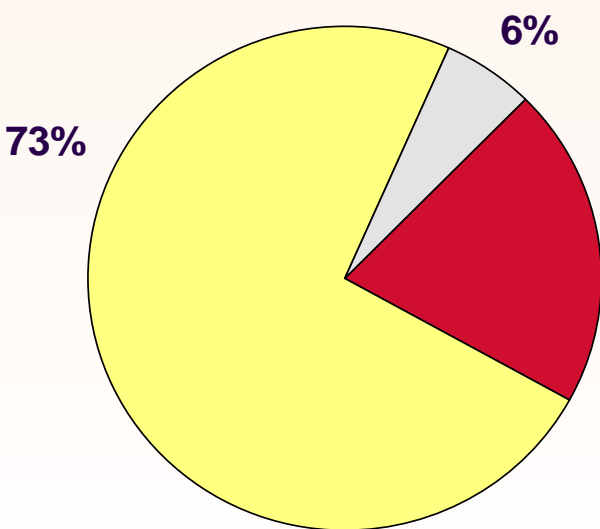
\*Southwest Florida = Hernando, Hillsborough, Pasco and Pinellas Counties (excl DOC)

# Hispanic Adult Females Living with HIV Disease by Selected Country of Birth and Mode of Exposure Reported through 2010, Southwest Florida\*

**U.S. Born  
N=217**

**Cuba  
N=14**

**Puerto Rico  
N=89**



**Note: NIRs redistributed. Female Cuban-born cases were less likely to be injection drug users than their U.S.-born or Puerto Rico-born counterparts.**

**\*Southwest Florida = Hernando, Hillsborough, Pasco and Pinellas Counties (excl DOC)**

# Hispanic Adults HIV/AIDS Cases by Country of Birth Mode of Exposure\* and Sex Reported through 2010, Florida

Florida Living HIV/AIDS Cases Among MALES by Country of Birth										
Country of Birth	US		Cuba		Puerto Rico		Other/Unkn		Total	
	#	%	#	%	#	%	#	%	#	%
<b>MALES</b>										
MSM	2,859	68%	1,940	79%	701	51%	3,480	74%	8,980	71%
IDU	508	12%	102	4%	378	27%	187	4%	1,175	9%
MSM/IDU	246	6%	119	5%	127	9%	131	3%	623	5%
Heterosexual	502	12%	299	12%	156	11%	901	19%	1,858	15%
Other/Unknown**	59	1%	1	0%	13	1%	10	0%	83	1%
<b>TOTAL</b>	<b>4,174</b>	<b>100%</b>	<b>2,461</b>	<b>100%</b>	<b>1,375</b>	<b>100%</b>	<b>4,709</b>	<b>100%</b>	<b>12,719</b>	<b>100%</b>
Florida Living HIV/AIDS Cases Among Females by Country of Birth										
Country of Birth	US		Cuba		Puerto Rico		Other/Unkn		Total	
	#	%	#	%	#	%	#	%	#	%
<b>FEMALES</b>										
IDU	250	17%	31	11%	106	20%	61	5%	448	13%
Heterosexual	1,102	77%	257	88%	409	78%	1,052	93%	2,820	83%
Other/Unknown**	86	6%	3	1%	11	2%	13	1%	113	3%
<b>TOTAL</b>	<b>1,438</b>	<b>100%</b>	<b>291</b>	<b>100%</b>	<b>526</b>	<b>100%</b>	<b>1,126</b>	<b>100%</b>	<b>3,381</b>	<b>100%</b>
*NIRS are redistributed										

For Florida HIV/AIDS Surveillance Data

**Contact: (850) 245-4444**

**Lorene Maddox, MPH**

**Ext. 2613**

**Tracina Bush, BSW**

**Ext. 2612**

**Julia Fitz, MPH**

**Ext. 2373**

**Visit Florida's internet site for:**

- Monthly Surveillance Reports**
- Slide Sets and Fact Sheets**
- Annual Reports and Epi Profiles**

**[http://www.doh.state.fl.us/disease\\_ctrl/aids/trends/trends.html](http://www.doh.state.fl.us/disease_ctrl/aids/trends/trends.html)**

**Visit CDC's HIV/AIDS Internet site for:**

**Surveillance Reports, fact sheets and slide sets**

**<http://www.cdc.gov/hiv/topics/surveillance/resources/reports/index.htm>**