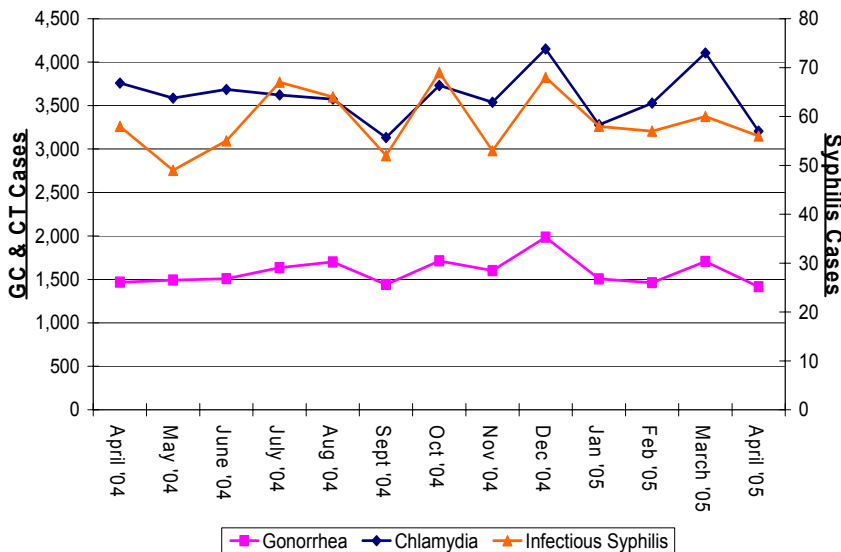


FI MONTHLY STD REPORT

Data Reported for April 2005

Figure 1: Monthly STD Trends for Florida 2004-05.
 Note: Different Scale for Syphilis



Disease	This Year		Last Year	
	This Month	Year to Date	This Month	Year to Date
Gonorrhea	1,416	6,028	1,468	5,504
Chlamydia	3,206	13,958	3,760	13,530
Syphilis Total	217	903	305	1,088
Infectious	56	231	58	251
Early Latent	54	226	102	343
Late Latent	107	446	145	494
Congenital Syphilis	0	3	2	8

Disclaimer: All statistics are provisional.. Totals may vary in past months due to delays in reporting from labs and providers. Morbidity is based on date of reporting.

Table 2. Selected STD cases and rates for Florida by age and race/ethnicity, 2005 through April only.

Disease	All Races		Asian/PI		American Indian		African American		Hispanic		White	
	cases	percent*	cases	percent*	cases	percent*	cases	percent*	cases	percent*	cases	percent*
All ages												
Gonorrhea	6,028	0.53%	32	0.53%	20	0.33%	3,843	63.75%	354	5.87%	1,351	22.41%
Chlamydia	13,959	0.97%	136	0.97%	65	0.47%	6,777	48.55%	1,498	10.73%	4,193	30.04%
Infectious Syphilis	231	0.87%	2	0.87%	0	0.00%	99	42.86%	31	13.42%	93	40.26%
Adolescent (under 20 yrs)												
Gonorrhea	1,736	0.46%	8	0.46%	5	0.29%	1,208	69.59%	69	3.97%	344	19.82%
Chlamydia	5,053	0.73%	37	0.73%	29	0.57%	2,569	50.84%	465	9.20%	1,518	30.04%
Infectious Syphilis	11	0.00%	0	0.00%	0	0.00%	10	90.91%	0	0.00%	1	9.09%

* Please note that 'percent' refers to percent of total cases. Also, the above rows may not add up to 100% due to other, missing or unknown racial/ethnic information.

Florida Demographics (based on 2000 Census): Asian/PI 1.8%, American Indian .3%, African American 14.6%, Hispanic Origin 16.8%, White non-Hispanic 65.4%



STD SUB-POPULATION SPOTLIGHT



Disease	This Year		Last Year	
	This Month	Year to Date	This Month	Year to Date
Gonorrhea	16	91	18	92
Chlamydia	7	58	17	74
Syphilis Total	23	130	36	122
Infectious	8	58	12	45
Early Latent	5	35	13	46
Late Latent	10	37	11	31

Disease	This Year		Last Year	
	This Month	Year to Date	This Month	Year to Date
Gonorrhea	22	106	27	121
Chlamydia	8	35	16	68
Syphilis Total	75	292	91	382
Infectious	34	142	29	166
Early Latent	31	108	42	157
Late Latent	10	42	20	59