

FI MONTHLY STD REPORT

Data Reported for August 2005

Figure 1: Monthly STD Trends for Florida 2004-2005.
Note: Different Scale for Syphilis

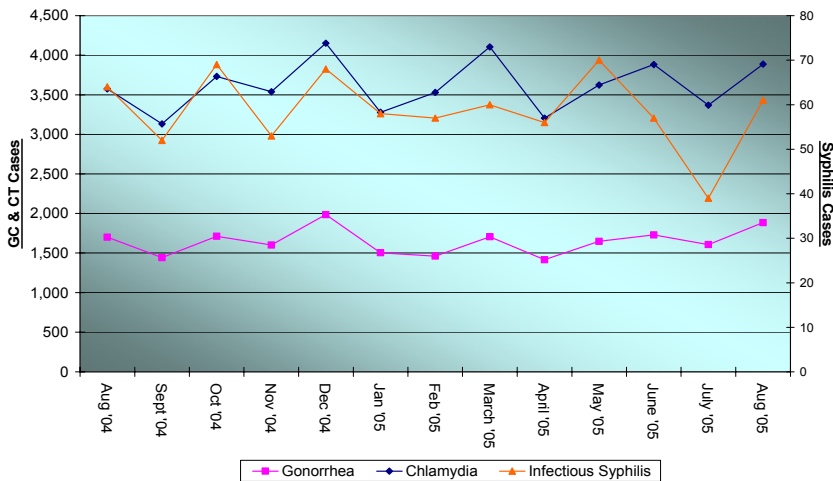


Table 1. STDs reported in Florida, Aug 2005

Disease	This Year		Last Year	
	This Month	Year to Date	This Month	Year to Date
Gonorrhea	1,885	12,880	1,701	11,839
Chlamydia	3,888	28,641	3,574	28,000
Syphilis Total	294	1,928	226	2,027
Infectious	61	467	64	486
Early Latent	81	501	65	608
Late Latent	152	960	97	933
Congenital Syphilis	0	4	1	14

Disclaimer: All statistics are provisional. Totals may vary in past months due to delays in reporting from labs and providers. Morbidity is based on date of reporting.

Table 2. Selected STD cases and rates for Florida by age and race/ethnicity, 2005 through Aug only.

Disease	All Races	Asian/PI		American Indian		African American		Hispanic		White	
	cases	cases	percent*	cases	percent*	cases	percent*	cases	percent*	cases	percent*
All ages											
Gonorrhea	12,880	80	0.62%	39	0.30%	8,305	64.48%	810	6.29%	2,801	21.75%
Chlamydia	28,641	269	0.94%	149	0.52%	14,273	49.83%	3,164	11.05%	8,232	28.74%
Infectious Syphilis	467	2	0.43%	0	0.00%	191	40.90%	71	15.20%	190	40.69%
Adolescent (under 20 yrs)											
Gonorrhea	3,640	24	0.66%	6	0.16%	2,549	70.03%	159	4.37%	708	19.45%
Chlamydia	10,435	79	0.76%	58	0.56%	5,437	52.10%	936	8.97%	3,050	29.23%
Infectious Syphilis	20	0	0.00%	0	0.00%	18	90.00%	2	10.00%	0	0.00%

* Please note that 'percent' refers to percent of total cases. Also, the above rows may not add up to 100% due to other, missing or unknown racial/ethnic information.

Florida Demographics (based on 2000 Census): Asian/PI 1.8%, American Indian .3%, African American 14.6%, Hispanic Origin 16.8%, White non-Hispanic 65.4%



STD SUB-POPULATION SPOTLIGHT



Table 3. STDs reported in confirmed HIV+, Aug 2005

Disease	This Year		Last Year	
	This Month	Year to Date	This Month	Year to Date
Gonorrhea	24	199	26	190
Chlamydia	25	141	18	147
Syphilis Total	41	258	34	246
Infectious	20	106	15	96
Early Latent	12	81	11	85
Late Latent	9	71	8	65

Table 4. STDs reported in MSMs, Aug 2005

Disease	This Year		Last Year	
	This Month	Year to Date	This Month	Year to Date
Gonorrhea	31	253	27	250
Chlamydia	15	82	10	111
Syphilis Total	81	628	79	686
Infectious	33	280	39	302
Early Latent	29	229	31	266
Late Latent	19	119	9	118