

FI MONTHLY STD REPORT

Data Reported for June 2005

Figure 1: Monthly STD Trends for Florida 2004-05.
Note: Different Scale for Syphilis

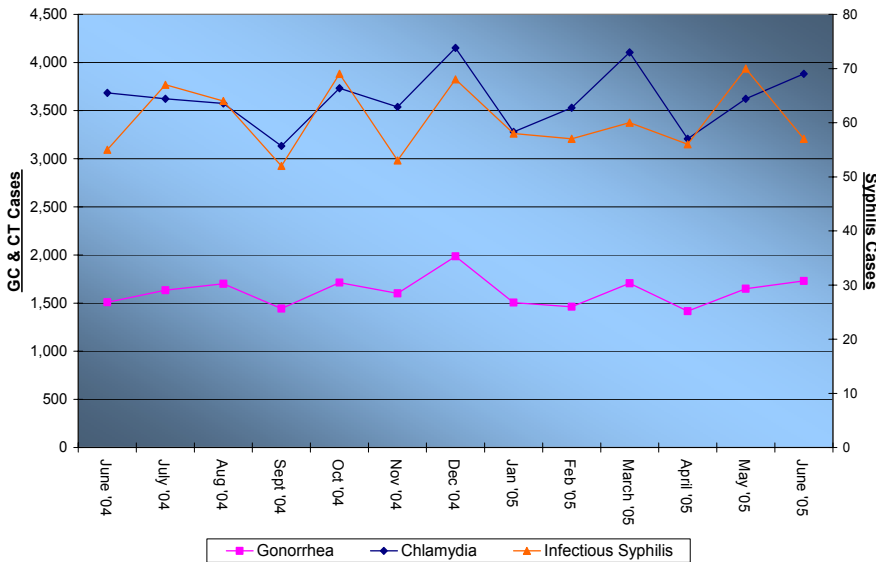


Table 1. STDs reported in Florida, June 2005

Disease	This Year		Last Year	
	This Month	Year to Date	This Month	Year to Date
Gonorrhea	1,729	9,428	1,508	8,504
Chlamydia	3,882	21,493	3,685	20,804
Syphilis Total	239	1,412	243	1,562
Infectious	57	365	55	355
Early Latent	62	363	74	474
Late Latent	120	684	114	733
Congenital Syphilis	0	3	1	13

Disclaimer: All statistics are provisional.. Totals may vary in past months due to delays in reporting from labs and providers. Morbidity is based on date of reporting.

Table 2. Selected STD cases and rates for Florida by age and race/ethnicity, 2005 through June only.

Disease	All Races	Asian/PI		American Indian		African American		Hispanic		White	
	cases	cases	percent*	cases	percent*	cases	percent*	cases	percent*	cases	percent*
All ages											
Gonorrhea	9,428	61	0.65%	31	0.33%	6,104	64.74%	558	5.92%	2,060	21.85%
Chlamydia	21,493	207	0.96%	106	0.49%	10,668	49.63%	2,317	10.78%	6,333	29.47%
Infectious Syphilis	365	2	0.55%	0	0.00%	153	41.92%	51	13.97%	150	41.10%
Adolescent (under 20 yrs)											
Gonorrhea	2,687	17	0.63%	6	0.22%	1,886	70.19%	116	4.32%	521	19.39%
Chlamydia	7,788	63	0.81%	39	0.50%	4,020	51.62%	699	8.98%	2,329	29.90%
Infectious Syphilis	15	0	0.00%	0	0.00%	14	93.33%	0	0.00%	1	6.67%

* Please note that 'percent' refers to percent of total cases. Also, the above rows may not add up to 100% due to other, missing or unknown racial/ethnic information.

Florida Demographics (based on 2000 Census): Asian/PI 1.8%, American Indian .3%, African American 14.6%, Hispanic Origin 16.8%, White non-Hispanic 65.4%



STD SUB-POPULATION SPOTLIGHT



Table 3. STDs reported in confirmed HIV+, June 2005

Disease	This Year		Last Year	
	This Month	Year to Date	This Month	Year to Date
Gonorrhea	27	145	24	139
Chlamydia	16	94	18	109
Syphilis Total	32	190	30	181
Infectious	13	75	10	65
Early Latent	8	58	10	67
Late Latent	11	57	10	49

Table 4. STDs reported in MSMs, June 2005

Disease	This Year		Last Year	
	This Month	Year to Date	This Month	Year to Date
Gonorrhea	30	180	28	187
Chlamydia	6	51	5	90
Syphilis Total	79	476	63	517
Infectious	35	223	25	217
Early Latent	26	176	23	206
Late Latent	18	77	15	94