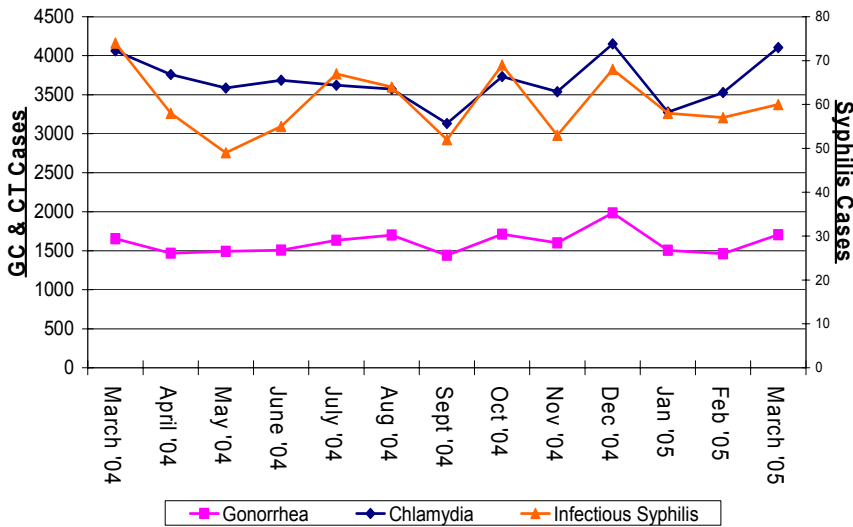


FI MONTHLY STD REPORT

Data Reported for March 2005

Figure 1: Monthly STD Trends for Florida 2004-05.
Note: Different Scale for Syphilis



Disease	This Year		Last Year	
	This Month	Year to Date	This Month	Year to Date
Gonorrhea	1,706	4,612	1,654	4,036
Chlamydia	4,105	10,752	4,064	9,770
Syphilis Total	279	686	317	783
Infectious	60	175	74	193
Early Latent	76	172	89	241
Late Latent	143	339	154	349
Congenital Syphilis	2	3	2	6

Disclaimer: All statistics are provisional.. Totals may vary in past months due to delays in reporting from labs and providers. Morbidity is based on date of reporting.

Table 2. Selected STD cases and rates for Florida by age and race/ethnicity, 2005 through March only.

Disease	All Races		Asian/PI		American Indian		African American		Hispanic		White	
	cases	percent*	cases	percent*	cases	percent*	cases	percent*	cases	percent*	cases	percent*
All ages												
Gonorrhea	4,612	0.39%	18	0.39%	23	0.50%	2,925	63.42%	272	5.90%	1,037	22.48%
Chlamydia	10,752	0.99%	106	0.99%	48	0.45%	5,191	48.28%	1,163	10.82%	3,222	29.97%
Infectious Syphilis	175	0.57%	1	0.57%	0	0.00%	72	41.14%	27	15.43%	70	40.00%
Adolescent (under 20 yrs)												
Gonorrhea	1,325	0.45%	6	0.45%	4	0.30%	924	69.74%	55	4.15%	262	19.77%
Chlamydia	3,903	0.72%	28	0.72%	21	0.54%	1,947	49.88%	367	9.40%	1,200	30.75%
Infectious Syphilis	6	0.00%	0	0.00%	0	0.00%	6	100.00%	0	0.00%	0	0.00%

* Please note that 'percent' refers to percent of total cases. Also, the above rows may not add up to 100% due to other, missing or unknown racial/ethnic information.

Florida Demographics (based on 2000 Census): Asian/PI 1.8%, American Indian .3%, African American 14.6%, Hispanic Origin 16.8%, White non-Hispanic 65.4%



STD SUB-POPULATION SPOTLIGHT



Disease	This Year		Last Year	
	This Month	Year to Date	This Month	Year to Date
Gonorrhea	25	75	28	74
Chlamydia	25	51	20	57
Syphilis Total	42	121	35	86
Infectious	18	64	14	33
Early Latent	14	30	9	33
Late Latent	10	27	12	20

Disease	This Year		Last Year	
	This Month	Year to Date	This Month	Year to Date
Gonorrhea	33	84	37	94
Chlamydia	12	27	27	52
Syphilis Total	81	217	118	291
Infectious	40	108	51	137
Early Latent	30	77	48	115
Late Latent	11	32	19	39