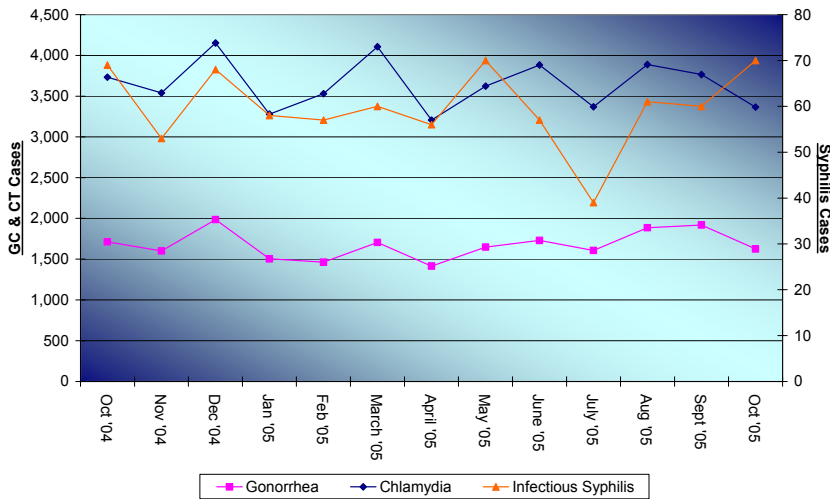


# FI MONTHLY STD REPORT

Data Reported for October 2005

**Figure 1: Monthly STD Trends for Florida 2004-2005.**  
Note: Different Scale for Syphilis



**Table 1. STDs reported in Florida, Oct 2005**

Disease	This Year		Last Year	
	This Month	Year to Date	This Month	Year to Date
Gonorrhea	1,626	16,426	1,712	14,993
Chlamydia	3,365	35,770	3,732	34,864
Syphilis Total	234	2,401	231	2,465
Infectious	70	597	69	607
Early Latent	61	613	59	722
Late Latent	103	1,191	103	1,136
Congenital Syphilis	0	6	1	15

**Disclaimer:** All statistics are provisional.. Totals may vary in past months due to delays in reporting from labs and providers. Morbidity is based on date of reporting.

**Table 2. Selected STD cases and rates for Florida by age and race/ethnicity, 2005 through Oct only.**

Disease	All Races		Asian/PI		American Indian		African American		Hispanic		White	
	cases	percent*	cases	percent*	cases	percent*	cases	percent*	cases	percent*	cases	percent*
<b>All ages</b>												
Gonorrhea	16,426	0.65%	107	0.65%	44	0.27%	10,602	64.54%	1,018	6.20%	3,541	21.56%
Chlamydia	35,770	0.93%	334	0.93%	188	0.53%	17,775	49.69%	3,955	11.06%	10,234	28.61%
Infectious Syphilis	597	0.34%	2	0.34%	0	0.00%	238	39.87%	95	15.91%	246	41.21%
<b>Adolescent (under 20 yrs)</b>												
Gonorrhea	4,611	0.72%	33	0.72%	8	0.17%	3,232	70.09%	208	4.51%	876	19.00%
Chlamydia	13,065	0.82%	107	0.82%	73	0.56%	6,814	52.15%	1,165	8.92%	3,775	28.89%
Infectious Syphilis	28	0.00%	0	0.00%	0	0.00%	23	82.14%	1	3.57%	4	14.29%

\* Please note that 'percent' refers to percent of total cases. Also, the above rows may not add up to 100% due to other, missing or unknown racial/ethnic information.

**Florida Demographics (based on 2000 Census): Asian/PI 1.8%, American Indian .3%, African American 14.6%, Hispanic Origin 16.8%, White non-Hispanic 65.4%**



## STD SUB-POPULATION SPOTLIGHT



**Table 3. STDs reported in confirmed HIV+, Oct 2005**

Disease	This Year		Last Year	
	This Month	Year to Date	This Month	Year to Date
Gonorrhea	26	255	18	234
Chlamydia	20	179	20	181
Syphilis Total	25	307	32	308
Infectious	9	121	15	123
Early Latent	10	97	11	105
Late Latent	6	89	6	80

**Table 4. STDs reported in MSMs, Oct 2005**

Disease	This Year		Last Year	
	This Month	Year to Date	This Month	Year to Date
Gonorrhea	22	309	28	307
Chlamydia	8	104	12	132
Syphilis Total	69	772	81	838
Infectious	41	360	43	377
Early Latent	20	269	28	317
Late Latent	8	143	10	144