

FI MONTHLY STD REPORT

Data Reported for September 2005

Figure 1: Monthly STD Trends for Florida 2004-2005.
Note: Different Scale for Syphilis

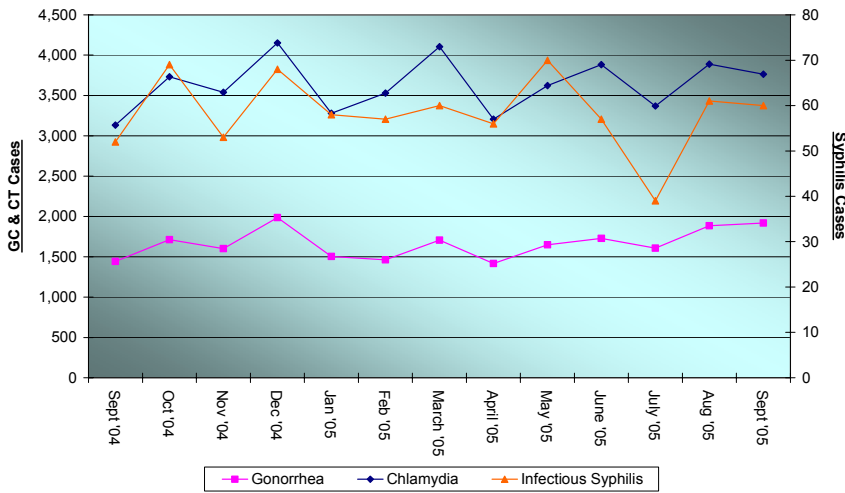


Table 1. STDs reported in Florida, Sept 2005

| Disease | This Year | | Last Year | |
|---------------------|------------|--------------|------------|--------------|
| | This Month | Year to Date | This Month | Year to Date |
| Gonorrhea | 1,920 | 14,800 | 1,442 | 13,281 |
| Chlamydia | 3,764 | 32,405 | 3,132 | 31,132 |
| Syphilis Total | 231 | 2,167 | 207 | 2,234 |
| Infectious | 60 | 527 | 52 | 538 |
| Early Latent | 49 | 552 | 55 | 663 |
| Late Latent | 122 | 1,088 | 100 | 1,033 |
| Congenital Syphilis | 2 | 6 | 0 | 14 |

Disclaimer: All statistics are provisional. Totals may vary in past months due to delays in reporting from labs and providers. Morbidity is based on date of reporting.

Table 2. Selected STD cases and rates for Florida by age and race/ethnicity, 2005 through Sept only.

| Disease | All Races | Asian/PI | | American Indian | | African American | | Hispanic | | White | |
|----------------------------------|-----------|----------|----------|-----------------|----------|------------------|----------|----------|----------|-------|----------|
| | cases | cases | percent* | cases | percent* | cases | percent* | cases | percent* | cases | percent* |
| All ages | | | | | | | | | | | |
| Gonorrhea | 14,800 | 94 | 0.64% | 42 | 0.28% | 9,553 | 64.55% | 920 | 6.22% | 3,194 | 21.58% |
| Chlamydia | 32,405 | 298 | 0.92% | 170 | 0.52% | 16,068 | 49.58% | 3,602 | 11.12% | 9,300 | 28.70% |
| Infectious Syphilis | 527 | 2 | 0.38% | 0 | 0.00% | 213 | 40.42% | 81 | 15.37% | 216 | 40.99% |
| Adolescent (under 20 yrs) | | | | | | | | | | | |
| Gonorrhea | 4,195 | 30 | 0.72% | 8 | 0.19% | 2,940 | 70.08% | 191 | 4.55% | 801 | 19.09% |
| Chlamydia | 11,810 | 94 | 0.80% | 68 | 0.58% | 6,143 | 52.02% | 1,059 | 8.97% | 3,442 | 29.14% |
| Infectious Syphilis | 23 | 0 | 0.00% | 0 | 0.00% | 20 | 86.96% | 0 | 0.00% | 3 | 13.04% |

* Please note that 'percent' refers to percent of total cases. Also, the above rows may not add up to 100% due to other, missing or unknown racial/ethnic information.

Florida Demographics (based on 2000 Census): Asian/PI 1.8%, American Indian .3%, African American 14.6%, Hispanic Origin 16.8%, White non-Hispanic 65.4%



STD SUB-POPULATION SPOTLIGHT



Table 3. STDs reported in confirmed HIV+, Sept 2005

| Disease | This Year | | Last Year | |
|----------------|------------|--------------|------------|--------------|
| | This Month | Year to Date | This Month | Year to Date |
| Gonorrhea | 30 | 229 | 26 | 216 |
| Chlamydia | 18 | 159 | 14 | 161 |
| Syphilis Total | 24 | 282 | 30 | 276 |
| Infectious | 6 | 112 | 12 | 108 |
| Early Latent | 6 | 87 | 9 | 94 |
| Late Latent | 12 | 83 | 9 | 74 |

Table 4. STDs reported in MSMs, Sept 2005

| Disease | This Year | | Last Year | |
|----------------|------------|--------------|------------|--------------|
| | This Month | Year to Date | This Month | Year to Date |
| Gonorrhea | 34 | 287 | 29 | 279 |
| Chlamydia | 14 | 96 | 9 | 120 |
| Syphilis Total | 75 | 703 | 71 | 757 |
| Infectious | 39 | 319 | 32 | 334 |
| Early Latent | 20 | 249 | 23 | 289 |
| Late Latent | 16 | 135 | 16 | 134 |