

# FI MONTHLY STD REPORT

Data reported for October 2003

Figure 1. Monthly STD Trends for Florida 2002-03.

Note: Different Scale for Syphilis

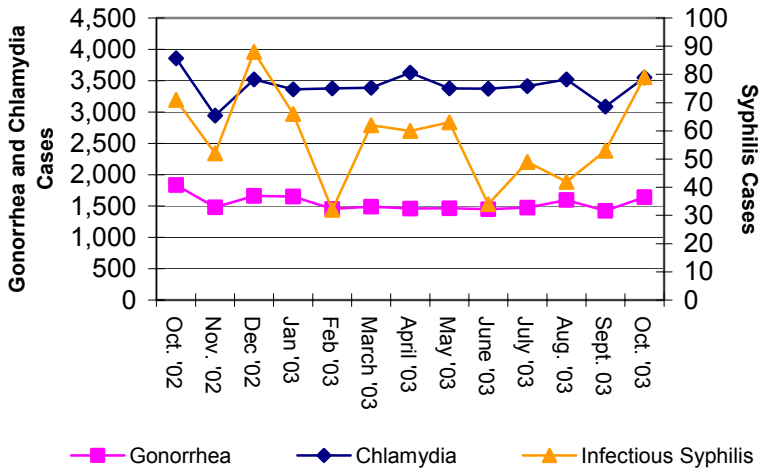


Table 1. STDs diagnosed among Floridians, Oct. 2003

	This Year		Last Year	
	This Mth	Yr to Date	This Mth	Yr to Date
Gonorrhea	1,643	15,240	1,837	18,204
Chlamydia	3,552	34,526	3,856	35,594
Syphilis (Adult Total)	301	2,688	318	2,702
Infectious	79	540	71	477
Early Latent	87	798	92	790
Late Latent	135	1,350	155	1,435
Congenital Syphilis	5	19	7	21

**Disclaimer:** All statistics are provisional. Totals may vary in past months due to delays in reporting from labs and providers. Morbidity is based on date of diagnosis.

Table 2. Selected STD cases and rates for Florida by age and race/ethnicity, 2003 through Oct. only. Rates equal cases per 100,000 residents

	(All Races)		Asian/PI		American Indian		African American		Hispanic		White	
	cases	percent*	cases	percent*	cases	percent*	cases	percent*	cases	percent*	cases	percent*
<b>All ages</b>												
Gonorrhea	15,240	100.00%	49	0.32%	8	0.05%	9,854	64.66%	824	5.41%	2,922	19.17%
Chlamydia	34,526	100.00%	174	0.50%	48	0.14%	16,529	47.87%	3,302	9.56%	9,212	26.68%
Infectious Syphilis	540	100.00%	4	0.74%	0	0.00%	129	23.89%	107	19.81%	267	49.44%
<b>Adolescent (under 20 yrs)</b>												
Gonorrhea	4,164	100.00%	9	0.22%	2	0.05%	2,816	67.63%	177	4.25%	714	17.15%
Chlamydia	13,101	100.00%	49	0.37%	21	0.16%	6,473	49.41%	1,025	7.82%	3,683	28.11%
Infectious Syphilis	22	100.00%	0	0.00%	0	0.00%	18	81.82%	3	13.64%	1	4.55%

\* Please note that 'percent' refers to percent of total cases. Also, the above rows may not add up to 100% due to missing racial information.

Florida Demographics (based on 2000 Census): Asian/PI 1.8%, American Indian .3%, African American 14.6%, Hispanic Origin 16.8%, White non-Hispanic 65.4%



## STD SPOTLIGHT



Table 3. STDs diagnosed in Broward County, Oct. 2003

	This Year		Last Year	
	This Month	Year to Date	This Month	Year to Date
Gonorrhea	164	1,395	196	1,668
Chlamydia	389	3,320	407	3,558
Syphilis (Adult Total)	51	450	31	231
Infectious	16	141	10	99
Early Latent	20	145	9	11
Late Latent	15	164	12	121
Congenital Syphilis	0	2	1	2

Table 4. STDs diagnosed in Palm Beach County, Oct. 2003

	This Year		Last Year	
	This Month	Year to Date	This Month	Year to Date
Gonorrhea	62	642	63	666
Chlamydia	231	1,874	191	1,716
Syphilis (Adult Total)	19	150	26	185
Infectious	3	31	6	22
Early Latent	9	45	12	78
Late Latent	7	74	8	85
Congenital Syphilis	0	1	1	4