

NPHPSP State Public Health System Performance Assessment Instrument

Summary Scores

Florida State (FL001)

Date Submitted: 03MAY2005

Description	Score
EPHS 1: Monitor Health Status	85.26
1.1 Planning and Implementation	83.03
1_1_1 Develop surveillance programs to measure health status	80.73
1_1_2 Organize data in a state health profile	60.83
1_1_3 Track state health trends	100.00
1_1_4 Compile and provide data to organizations for surveillance	88.33
1_1_5 Collaborate to assure timely collection, analysis and dissemination of data	81.33
1_1_6 Develop a uniform set of health indicators	90.00
1_1_7 Enforce laws and use protocols to protect personal health information and data with personal identifiers	80.00
1.2 Technical Assistance and Support	87.89
1_2_1 Offer training on the interpretation and use of data	76.67
1_2_2 Assist in developing information systems	100.00
1_2_3 Provide a standard set of health-related data to partners	96.11
1_2_4 Assist in publication of health data useful to the media and health planners	66.67
1_2_5 Communicate availability of assistance in health surveillance and data use to local public health systems	100.00
1.3 Evaluation and Quality Improvement	88.89
1_3_1 Review efforts to monitor health status	100.00

Centers for Disease Control and Prevention

Public Health Practice Program Office

Division of Public Health Systems Development and Research

National Public Health Performance Standards Program

1-800-PHPPO-49 or 1-800-747-7649

NPHPSP State Public Health System Performance Assessment Instrument

Summary Scores

Florida State (FL001)

Date Submitted: 03MAY2005

Description	Score
1_3_2 Information is used in continuous improvement of data and data systems	100.00
1_3_3 Solicit feedback from partners regarding state health profile development and distribution	66.67
1.4 Resources	81.21
1_4_1 Effectively manage current health status monitoring resources and develop new resources	84.44
1_4_2 Share system-wide resources to monitor health status	58.89
1_4_3 Use technology to monitor statewide health status	90.00
1_4_4 Use personnel with statistical, epidemiological and systems management expertise for health status monitorin	91.52
EPHS 2: Diagnose and Investigate Health Problems	94.52
2.1 Planning and Implementation	93.11
2_1_1 Operate surveillance systems that recognize threats to public health	86.31
2_1_2 Operate a reporting system to identify potential threats to public health	97.28
2_1_3 Collaborate with laboratories with capacity to analyze specimens	94.56
2_1_4 Develop plans to investigate and respond to public health threats	94.28
2.2 Technical Assistance and Support	99.73
2_2_1 Provide assistance to local public health systems and state partners to interpret epidemiologic findings	100.00
2_2_2 Provide laboratory assistance to the local public health systems and state partners	100.00

Centers for Disease Control and Prevention

Public Health Practice Program Office

Division of Public Health Systems Development and Research

National Public Health Performance Standards Program

1-800-PHPPO-49 or 1-800-747-7649

NPHPSP State Public Health System Performance Assessment Instrument

Summary Scores

Florida State (FL001)

Date Submitted: 03MAY2005

Description	Score
2_2_3 Provide local public health systems and state partners with information about possible health threats	98.91
2_2_4 Provide trained on-site personnel to assist communities with investigations	100.00
2.3 Evaluation and Quality Improvement	96.11
2_3_1 Periodically review effectiveness of the state surveillance system	100.00
2_3_2 Periodically review public health threat investigation and response plans	88.33
2_3_3 Review information to improve surveillance system responsiveness to health threats	100.00
2.4 Resources	89.14
2_4_1 Manage current resources to support diagnosis and investigation and develop new resources	82.22
2_4_2 Share system-wide resources to diagnose and investigate health hazards and problems	58.89
2_4_3 Provide screening tests in response to exposures to health hazards	100.00
2_4_4 Use laboratory facilities that support diagnostic investigation of public health threats	100.00
2_4_5 Use laboratory facilities with capacity to identify diseases required by the state or included in National N	100.00
2_4_6 Use in-state laboratories to investigate key diseases and conditions	100.00
2_4_7 Use epidemiologic expertise to identify and analyze public health threats and hazards	86.00
2_4_8 Use multiple disciplines to investigate adverse public health events	86.00
EPHS 3: Inform, Educate, and Empower People	54.03

Centers for Disease Control and Prevention

Public Health Practice Program Office

Division of Public Health Systems Development and Research

National Public Health Performance Standards Program

1-800-PHPP0-49 or 1-800-747-7649

NPHPSP State Public Health System Performance Assessment Instrument

Summary Scores

Florida State (FL001)

Date Submitted: 03MAY2005

Description	Score
3.1 Planning and Implementation	69.17
3_1_1 Design and implement health communication, health promotion and education programs	84.44
3_1_2 Collaborate to design and implement health communication, health promotion and education programs	58.89
3_1_3 Deliver culturally and linguistically appropriate health education and health promotion materials and activi	66.67
3_1_4 Use multiple channels to provide current health information, education and promotion services	66.67
3.2 Technical Assistance and Support	55.20
3_2_1 Enable partners to develop skills to improve community and personal health	66.67
3_2_2 Provide technical assistance in health communication, health promotion and education to partners	60.83
3_2_3 Assist partners to develop of effective health communication, health education and health promotion strategi	33.33
3_2_4 Provide consultation and training relevant to effective health communication and health education\promotion	59.98
3.3 Evaluation and Quality Improvement	37.22
3_3_1 Periodically review health communication and health education\promotion interventions	45.00
3_3_2 Involve the population served in the design and implementation of reviews	33.33
3_3_3 Apply review findings to improve health communication and health education\promotion interventions	33.33
3.4 Resources	54.53
3_4_1 Manage current and develop new health communication and health education\promotion resources	56.67
3_4_2 Share system-wide resources to implement health communication, health education and promotion services	43.33

Centers for Disease Control and Prevention

Public Health Practice Program Office

Division of Public Health Systems Development and Research

National Public Health Performance Standards Program

1-800-PHPP0-49 or 1-800-747-7649

NPHPSP State Public Health System Performance Assessment Instrument

Summary Scores

Florida State (FL001)

Date Submitted: 03MAY2005

Description	Score
3_4_3 Use resources for effective health communication, and health education and promotion interventions	52.67
3_4_4 Use professional expertise for effective health communication	60.00
3_4_5 Use professional expertise for effective health education\promotion interventions	60.00
EPHS 4: Mobilize Partnerships	63.58
4.1 Planning and Implementation	83.49
4_1_1 Build constituencies to address health issues	100.00
4_1_2 Build partnerships to identify and solve health problems	62.15
4_1_3 Brief state and local policy leaders using established procedures and timelines	88.33
4.2 Technical Assistance and Support	58.33
4_2_1 Provide consultation to local health systems and state partners to build partnerships for community health	60.00
4_2_2 Provide training to local health systems and state partners to build partnerships for community health impro	56.67
4.3 Evaluation and Quality Improvement	52.92
4_3_1 Review constituency-building and partnership facilitation activities	39.17
4_3_2 Review the participation and commitment of its partners	66.67
4.4 Resources	59.59

Centers for Disease Control and Prevention

Public Health Practice Program Office

Division of Public Health Systems Development and Research

National Public Health Performance Standards Program

1-800-PHPPO-49 or 1-800-747-7649

NPHPSP State Public Health System Performance Assessment Instrument

Summary Scores

Florida State (FL001)

Date Submitted: 03MAY2005

Description	Score
4_4_1 Manage current constituency development and partnership mobilization resources and develop new resources	66.67
4_4_2 Share system-wide resources to develop constituencies and mobilize partnerships	43.33
4_4_3 Maintain information about organizations that are current and potential partners	65.00
4_4_4 Commit resources to sustain partnerships	66.67
4_4_5 Utilize workforce expertise in collaborative group processes necessary to assist partners to organize and ac	56.30
EPHS 5: Develop Policies and Plans	77.43
5.1 Planning and Implementation	80.55
5_1_1 Implement statewide health improvement processes that facilitate collaboration	81.33
5_1_2 Include health objectives and improvement strategies in state health improvement plan	76.26
5_1_3 Conduct policy development activities	84.06
5.2 Technical Assistance and Support	80.42
5_2_1 Provide technical assistance to local public health systems and state partners to conduct community health i	100.00
5_2_2 Provide technical assistance to integrate health issues and strategies into local community development plan	66.67
5_2_3 Provide technical assistance to develop local operational plans to address the state health improvement plan	74.44
5_2_4 Provide technical assistance in local health policy development	80.56
5.3 Evaluation and Quality Improvement	86.94

Centers for Disease Control and Prevention

Public Health Practice Program Office

Division of Public Health Systems Development and Research

National Public Health Performance Standards Program

1-800-PHPP0-49 or 1-800-747-7649

NPHPSP State Public Health System Performance Assessment Instrument

Summary Scores

Florida State (FL001)

Date Submitted: 03MAY2005

Description	Score
5_3_1 Review progress towards accomplishing state-wide health improvement	80.81
5_3_2 Periodically review policy impact	80.00
5_3_3 Modify health improvement and policy actions based on reviews	100.00
5.4 Resources	61.82
5_4_1 Manage current resources for health planning and policy and develop new resources	68.89
5_4_2 Share system-wide resources to implement health planning and policy development	35.56
5_4_3 Use workforce expertise in strategic, long-range, and operational planning	71.33
5_4_4 Use workforce expertise in health policy	66.67
5_4_5 Use information systems that provide useful data for policy development and planning	66.67
EPHS 6: Enforce Laws and Regulations	50.21
6.1 Planning and Implementation	59.93
6_1_1 Review state laws and regulations designed to protect public health and safety	55.95
6_1_2 Solicit input on compliance and enforcement issues for laws and regulations reviewed	60.83
6_1_3 Provide education to encourage compliance with public health laws or regulations	35.15
6_1_4 Use written guidelines to administer public health enforcement activities	100.00
6_1_5 Ensure administrative processes are customer-centered	49.17
6_1_6 Enforce health and safety laws and regulations through collaborative efforts	58.50

Centers for Disease Control and Prevention

Public Health Practice Program Office

Division of Public Health Systems Development and Research

National Public Health Performance Standards Program

1-800-PHPP0-49 or 1-800-747-7649

NPHPSP State Public Health System Performance Assessment Instrument

Summary Scores

Florida State (FL001)

Date Submitted: 03MAY2005

Description	Score
6.2 Technical Assistance and Support	60.00
6_2_1 Provide technical assistance to local public health systems and state partners to enforce public health laws	66.67
6_2_2 Assure enforcement training for enforcement personnel	40.00
6_2_3 Provide direct assistance to local public health systems and state partners in complex enforcement operation	66.67
6_2_4 Provide local governing bodies with assistance to develop ordinances	66.67
6.3 Evaluation and Quality Improvement	40.14
6_3_1 Review capacity to conduct enforcement functions within the state	37.22
6_3_2 Monitor enforcement procedures to assure for professional conduct of personnel	56.67
6_3_3 Review technical assistance provided to local public health systems and state partners regarding enforcement	33.33
6_3_4 Make improvements in enforcement activities based on review of findings	33.33
6.4 Resources	40.78
6_4_1 Manage current resources used to enforce and develop new resources	33.33
6_4_2 Share system-wide resources to implement enforcement activities	25.56
6_4_3 Use expertise in legislative and regulatory processes	45.00
6_4_4 Use workforce expertise to enforce public health laws and regulations	66.67
6_4_5 Use workforce expertise to educate those affected by public health laws and regulations	33.33

Centers for Disease Control and Prevention

Public Health Practice Program Office

Division of Public Health Systems Development and Research

National Public Health Performance Standards Program

1-800-PHPP0-49 or 1-800-747-7649

NPHPSP State Public Health System Performance Assessment Instrument

Summary Scores

Florida State (FL001)

Date Submitted: 03MAY2005

Description	Score
EPHS 7: Link People to Needed Personal Health Services	61.96
7.1 Planning and Implementation	77.16
7_1_1 Assess availability of state-wide personal health care services	92.22
7_1_2 Collaborate to identify medically underserved populations	65.00
7_1_3 Work with health care providers to assure care for persons living in the state	66.67
7_1_4 Inform policymakers of barriers to accessing personal health care services	90.00
7_1_5 Deliver services and programs to improve access to personal health care	71.90
7.2 Technical Assistance and Support	57.22
7_2_1 Assist to identify barriers to health care access	66.67
7_2_2 Assist in developing partnerships to reduce barriers and promote access to health care for underserved popul	66.67
7_2_3 Assist in designing health care delivery programs for underserved populations	66.67
7_2_4 Provide health care services at the local level when they cannot be satisfactorily delivered by others	33.33
7_2_5 Work with health state partners and local public health systems to coordinate complementary programs to opti	66.67
7_2_6 Provide technical assistance to safety-net providers	43.33
7.3 Evaluation and Quality Improvement	55.16
7_3_1 Review programs that assure the provision of needed personal health services	42.14
7_3_2 Incorporate perspectives of those who experience problems with accessibility and availability of health care	66.67

Centers for Disease Control and Prevention

Public Health Practice Program Office

Division of Public Health Systems Development and Research

National Public Health Performance Standards Program

1-800-PHPPO-49 or 1-800-747-7649

NPHPSP State Public Health System Performance Assessment Instrument

Summary Scores

Florida State (FL001)

Date Submitted: 03MAY2005

Description	Score
7_3_3 Institute change in programs to assure health care based on findings from monitoring and evaluation activit	56.67
7.4 Resources	58.29
7_4_1 Manage current resources and develop future resources to assure the provision of personal health care	66.67
7_4_2 Share system-wide resources to effectively provide needed personal health care	33.33
7_4_3 Entity responsible for monitoring state-wide personal health care delivery	65.00
7_4_4 Use workforce skills in reviewing health care services	50.83
7_4_5 Use a workforce skilled in the analysis of health services	58.89
7_4_6 Use a workforce skilled in managing health services quality improvement programs	66.67
7_4_7 Use a workforce skilled in the delivery of health care services programs and linking people to needed servi	66.67
EPHS 8: Assure a Competent Workforce	36.04
8.1 Planning and Implementation	41.17
8_1_1 Assess workforce needs to deliver state-wide health care services	45.00
8_1_2 Develop statewide workforce development plan to guide workforce development	30.00
8_1_3 Human resources development programs provide training to enhance needed workforce skills	28.67
8_1_4 Individuals in regulated professions meet prescribed competencies required by law or recommended by state, o	66.67
8_1_5 Support initiatives that encourage life-long learning	33.33
8_1_6 Workforce applies leadership skills to community health improvement activities	43.33

Centers for Disease Control and Prevention

Public Health Practice Program Office

Division of Public Health Systems Development and Research

National Public Health Performance Standards Program

1-800-PHPP0-49 or 1-800-747-7649

NPHPSP State Public Health System Performance Assessment Instrument

Summary Scores

Florida State (FL001)

Date Submitted: 03MAY2005

Description	Score
8.2 Technical Assistance and Support	33.33
8_2_1 Assist in completing workforce assessment	33.33
8_2_2 Assist in workforce development	33.33
8_2_3 Assure availability of educational courses to enhance workforce skills	33.33
8_2_4 Facilitate partner linkages to improve educational offerings	33.33
8.3 Evaluation and Quality Improvement	36.67
8_3_1 Review workforce assessment activities	43.33
8_3_2 Assess achievements of workforce development plan	33.33
8_3_3 Use performance appraisal programs to stimulate workforce quality improvement	33.33
8.4 Resources	33.01
8_4_1 Manage current workforce development resources and develop future resources	17.78
8_4_2 Share system-wide resources to conduct workforce activities	33.33
8_4_3 Use a system of life-long learning for workforce	46.63
8_4_4 Use leadership development programs for state wide workforce	33.33
8_4_5 Use programs to develop cultural competencies among state wide and personal workforce	33.33
8_4_6 Use expertise in management of human resource development programs	33.33
8_4_7 Invest in state wide recruitment and retention of qualified health professionals	33.33

Centers for Disease Control and Prevention

Public Health Practice Program Office

Division of Public Health Systems Development and Research

National Public Health Performance Standards Program

1-800-PHPP0-49 or 1-800-747-7649

NPHPSP State Public Health System Performance Assessment Instrument

Summary Scores

Florida State (FL001)

Date Submitted: 03MAY2005

Description	Score
EPHS 9: Evaluate Effectiveness, Accessibility and Quality	54.09
9.1 Planning and Implementation	57.17
9_1_1 Evaluate state wide population-based health service	53.33
9_1_2 Evaluate state wide personal health services within the state	45.86
9_1_3 Establish and use standards to assess performance of the state health system	53.33
9_1_4 Monitor multi-year health programs to assure interventions are appropriately focused to achieve health servi	66.67
9_1_5 Use assessment finding to institute quality improvement changes in specific health services	66.67
9.2 Technical Assistance and Support	53.23
9_2_1 Provide technical assistance in reviewing of population-based and personal health services	46.25
9_2_2 Provide technical assistance in evaluating performance of the Essential Public Health Services	66.67
9_2_3 Offer consultation service and guidance to conduct consumer satisfaction studies	33.33
9_2_4 Share results of performance evaluations with partners for health improvement and strategic planning	66.67
9.3 Evaluation and Quality Improvement	66.67
9_3_1 Review evaluation and quality improvement	66.67
9_3_2 Review evaluation quality improvement activities when weaknesses become apparent	66.67
9_3_3 Use results of reviews for improvement of evaluation and quality improvement activities	66.67

Centers for Disease Control and Prevention

Public Health Practice Program Office

Division of Public Health Systems Development and Research

National Public Health Performance Standards Program

1-800-PHPPO-49 or 1-800-747-7649

NPHPSP State Public Health System Performance Assessment Instrument

Summary Scores

Florida State (FL001)

Date Submitted: 03MAY2005

Description	Score
9.4 Resources	39.31
9_4_1 Mange current evaluation resources and develop new resources	33.33
9_4_2 Share system-wide resources to effectively conduct evaluation activities	33.33
9_4_3 Analytical tools needed to measure and monitor compliance with performance standards for population-based an	43.33
9_4_4 Use expertise to establish standards, monitor and develop quality improvement activities to improve performa	47.22
EPHS 10: Research for New Insights and Innovative Solutions	42.08
10.1 Planning and Implementation	42.87
10_1_1 Have a public health research agenda	31.93
10_1_2 Implement the public health research agenda	63.33
10_1_3 Have statewide communication process for sharing research findings on innovative public health practices	33.33
10.2 Technical Assistance and Support	44.17
10_2_1 Help with research activities	55.00
10_2_2 Assist in use of research findings	33.33
10.3 Evaluation and Quality Improvement	45.83
10_3_1 Review its ability to engage in public health research	39.17

Centers for Disease Control and Prevention

Public Health Practice Program Office

Division of Public Health Systems Development and Research

National Public Health Performance Standards Program

1-800-PHPPO-49 or 1-800-747-7649

NPHPSP State Public Health System Performance Assessment Instrument

Summary Scores

Florida State (FL001)

Date Submitted: 03MAY2005

Description	Score
10_3_2 Review its ability to communicate information on research findings	33.33
10_3_3 Review ability to provide technical assistance with application of research findings in the delivery of Ess	33.33
10_3_4 Review relevance of research activities	56.67
10_3_5 Use findings from reviews to improve research activities	66.67
10.4 Resources	35.44
10_4_1 Manage current research resources and develop new resources	41.11
10_4_2 Share system-wide resources to conduct research activities	17.78
10_4_3 Invest resources in analytical tools necessary to support the research function	21.67
10_4_4 Use workforce expertise to direct research activities	63.33
10_4_5 Use workforce expertise to develop and implement research agendas	33.33
Average Total Performance Score	61.92

Centers for Disease Control and Prevention

Public Health Practice Program Office

Division of Public Health Systems Development and Research

National Public Health Performance Standards Program

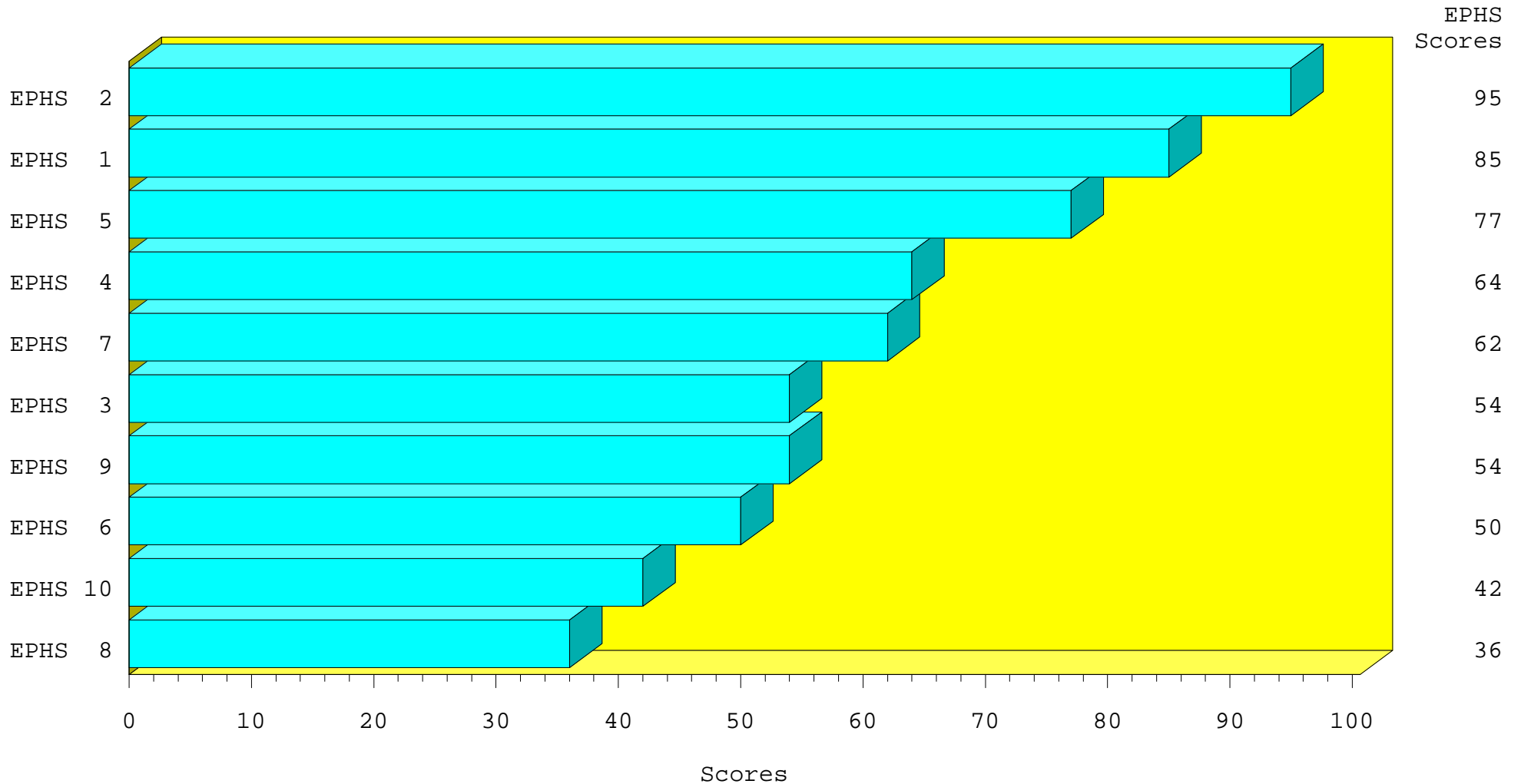
1-800-PHPPO-49 or 1-800-747-7649

NPHPSP State Public Health System Performance Assessment Instrument

Essential Public Health Service (EPHS) Summary Scores (arranged in descending order)

Florida State (FL001)

Date Submitted: 03MAY2005



Centers for Disease Control and Prevention
Public Health Practice Program Office
Division of Public Health Systems Development and Research
National Public Health Performance Standards Program
1-800-PHPP0-49 or 1-800-747-7649

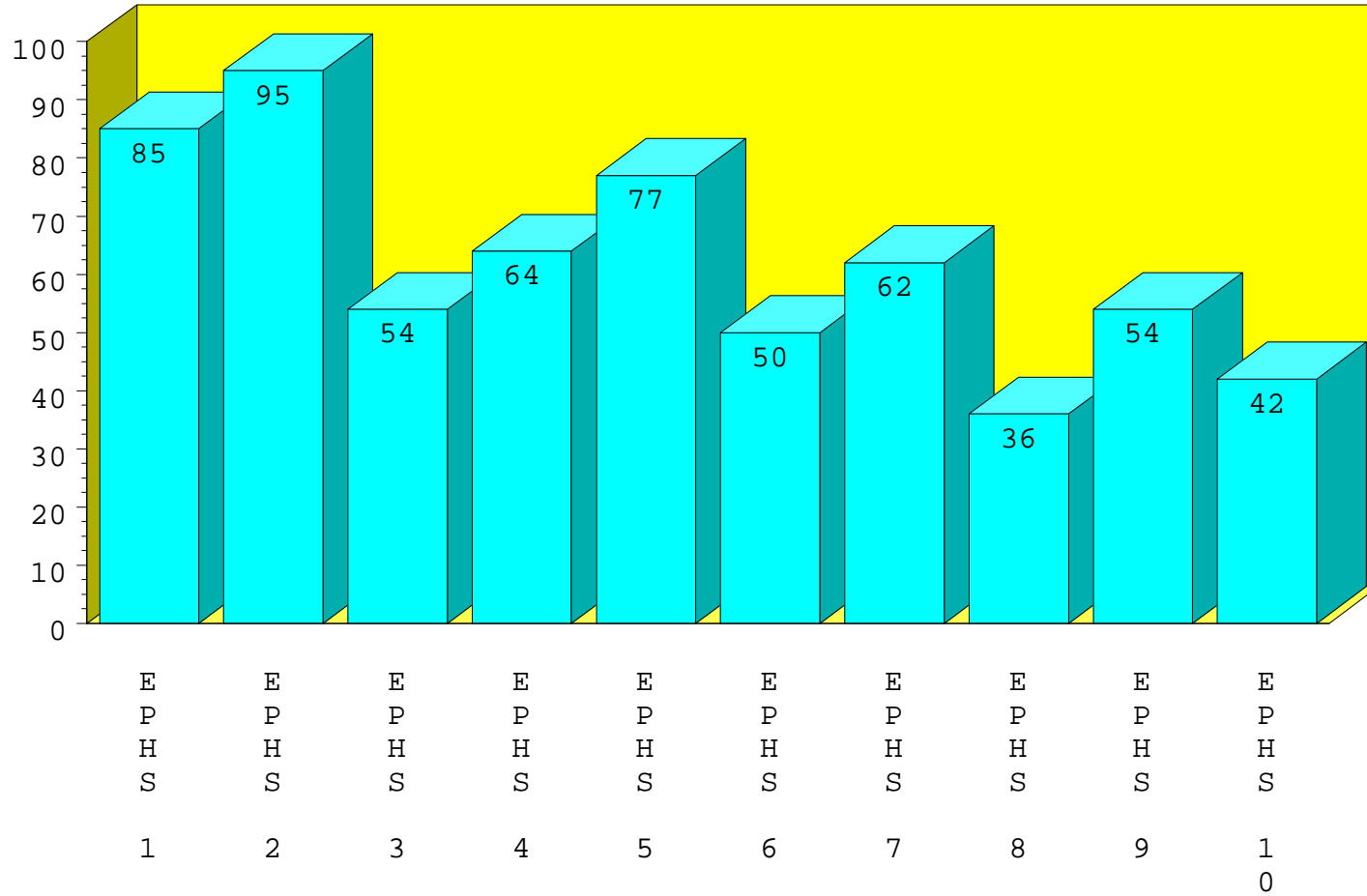
NPHPSP State Public Health System Performance Assessment Instrument

Essential Public Health Service (EPHS) Summary Scores

Florida State (FL001)

Date Submitted: 03MAY2005

Scores



Essential Public Health Services

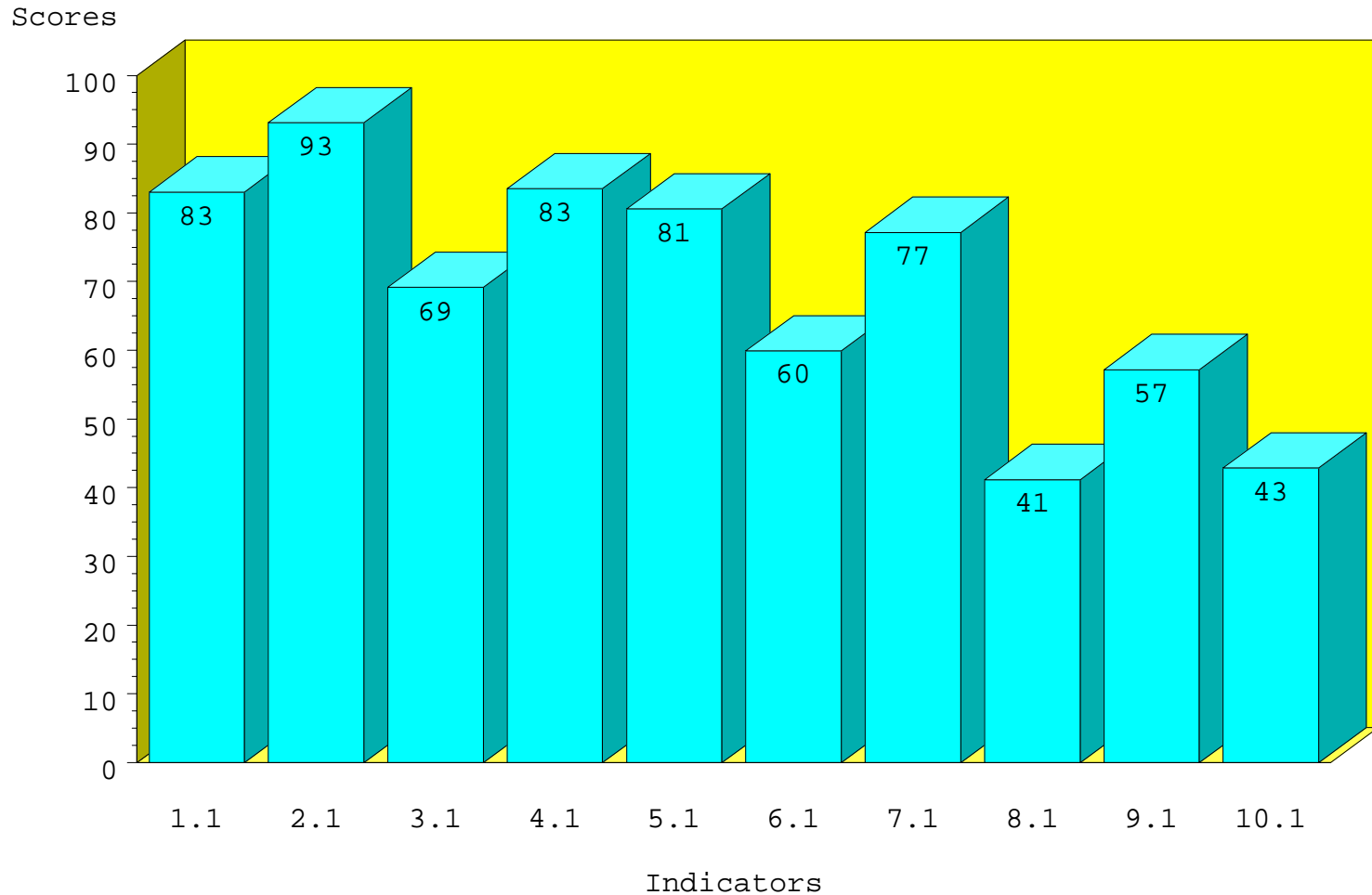
NPHPSP State Public Health System Performance Assessment Instrument

Summary Scores at the Indicator Level

Florida State (FL001)

Date Submitted: 03MAY2005

Planning and Implementation(1)



Centers for Disease Control and Prevention
Public Health Practice Program Office
Division of Public Health Systems Development and Research
National Public Health Performance Standards Program
1-800-PHPP0-49 or 1-800-747-7649

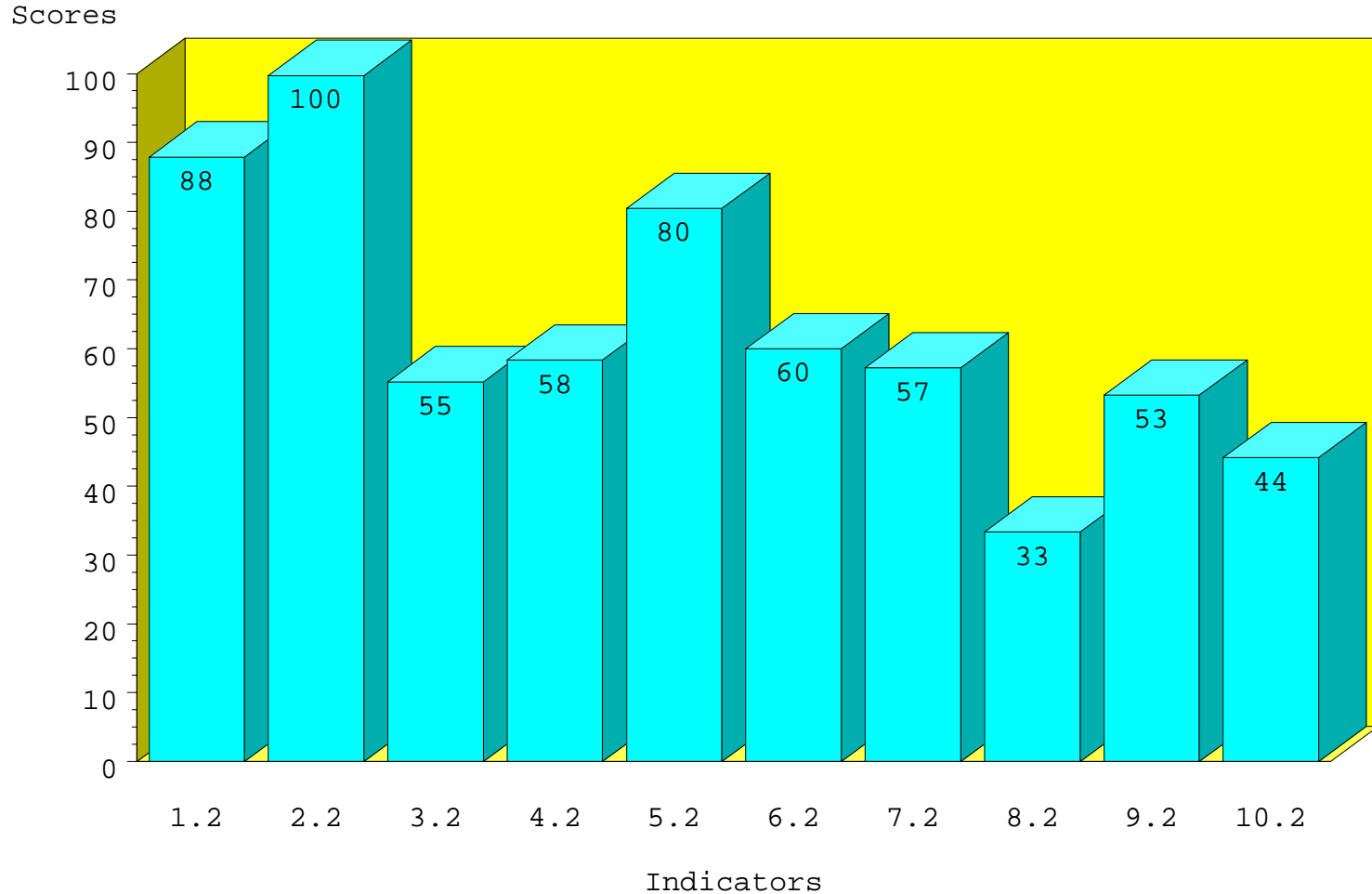
NPHPSP State Public Health System Performance Assessment Instrument

Summary Scores at the Indicator Level

Florida State (FL001)

Date Submitted: 03MAY2005

Technical Assistance and Support(2)



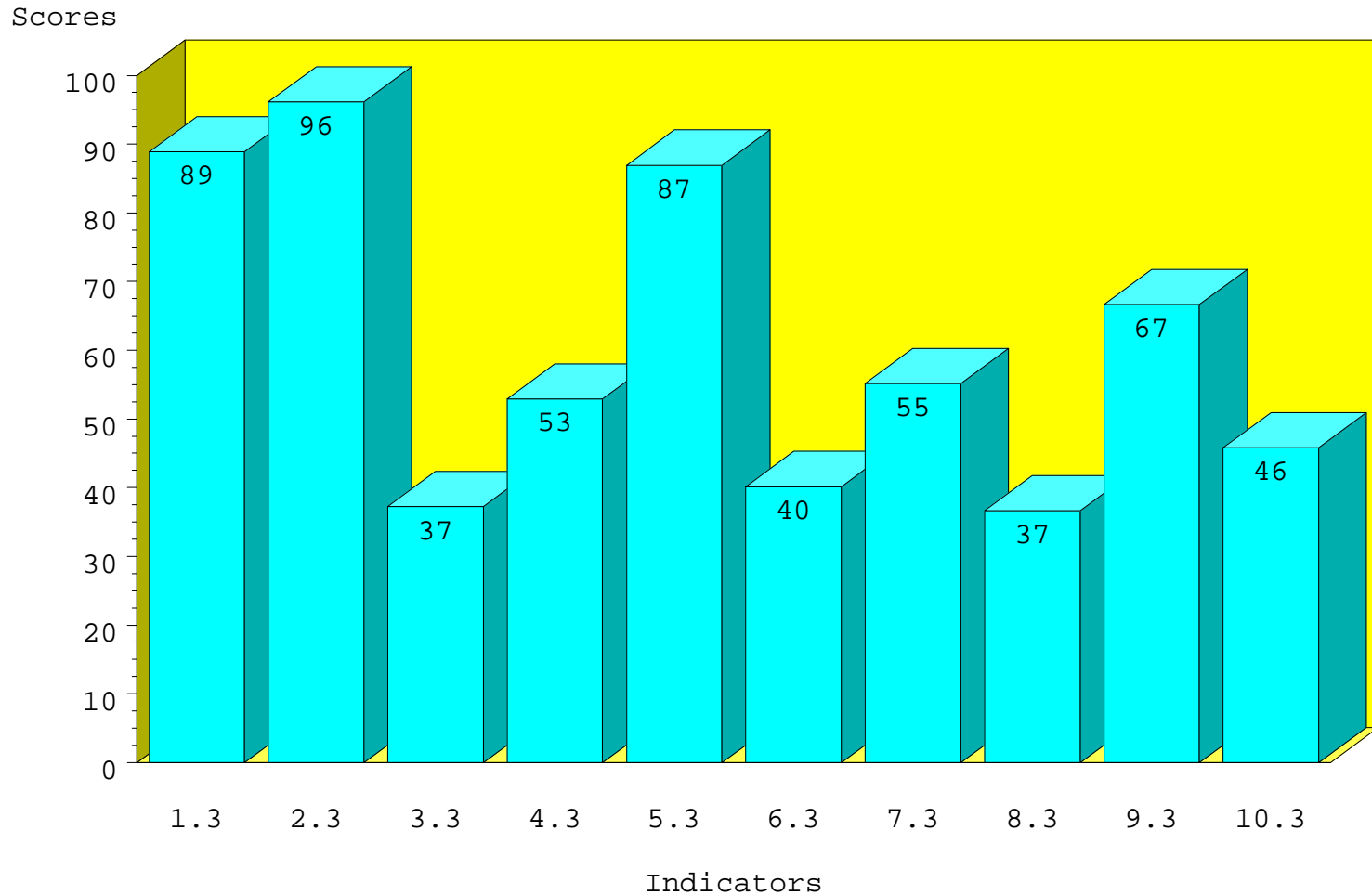
NPHPSP State Public Health System Performance Assessment Instrument

Summary Scores at the Indicator Level

Florida State (FL001)

Date Submitted: 03MAY2005

Evaluation and Quality Improvement(3)



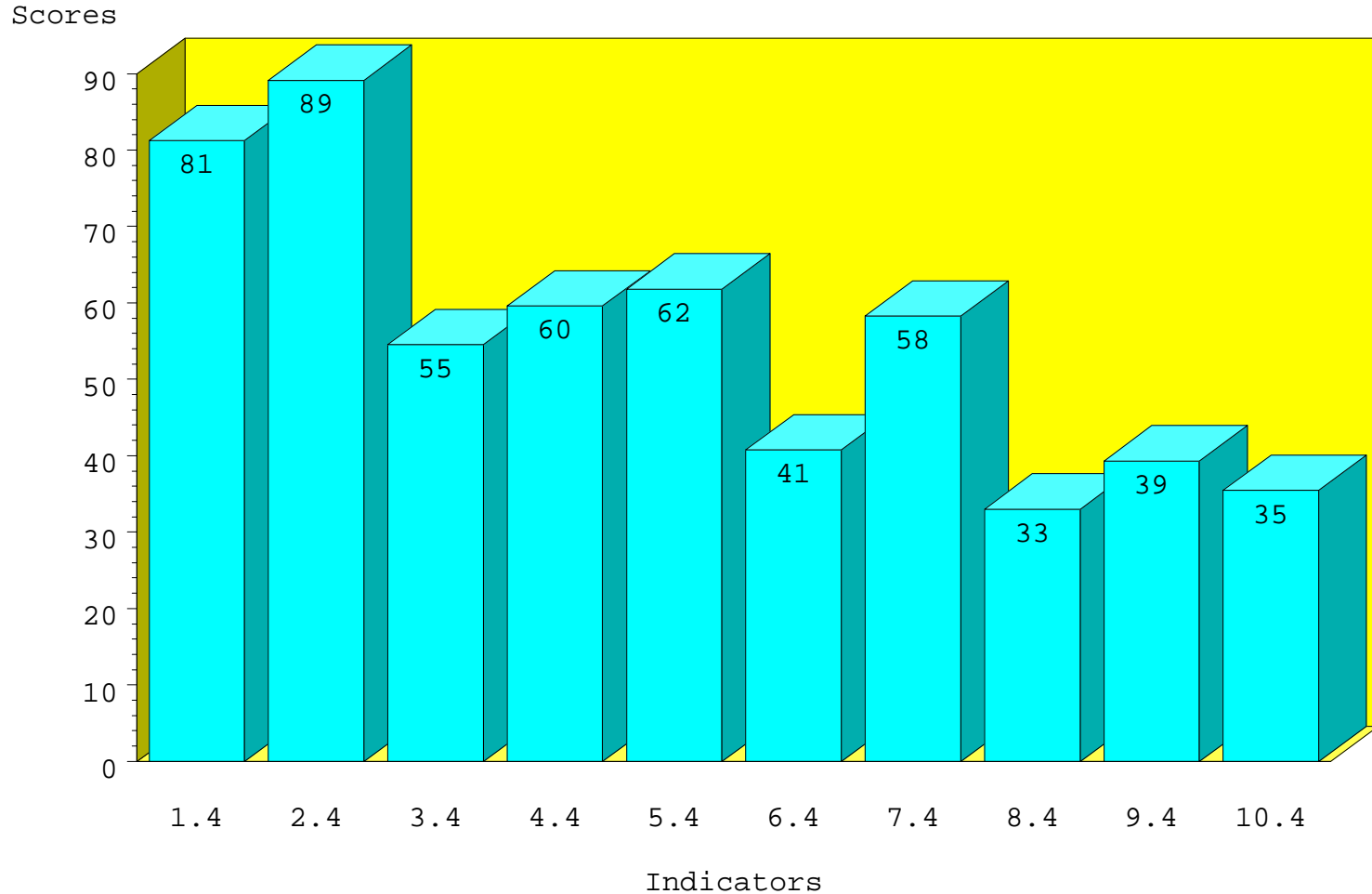
NPHPSP State Public Health System Performance Assessment Instrument

Summary Scores at the Indicator Level

Florida State (FL001)

Date Submitted: 03MAY2005

Resources(4)



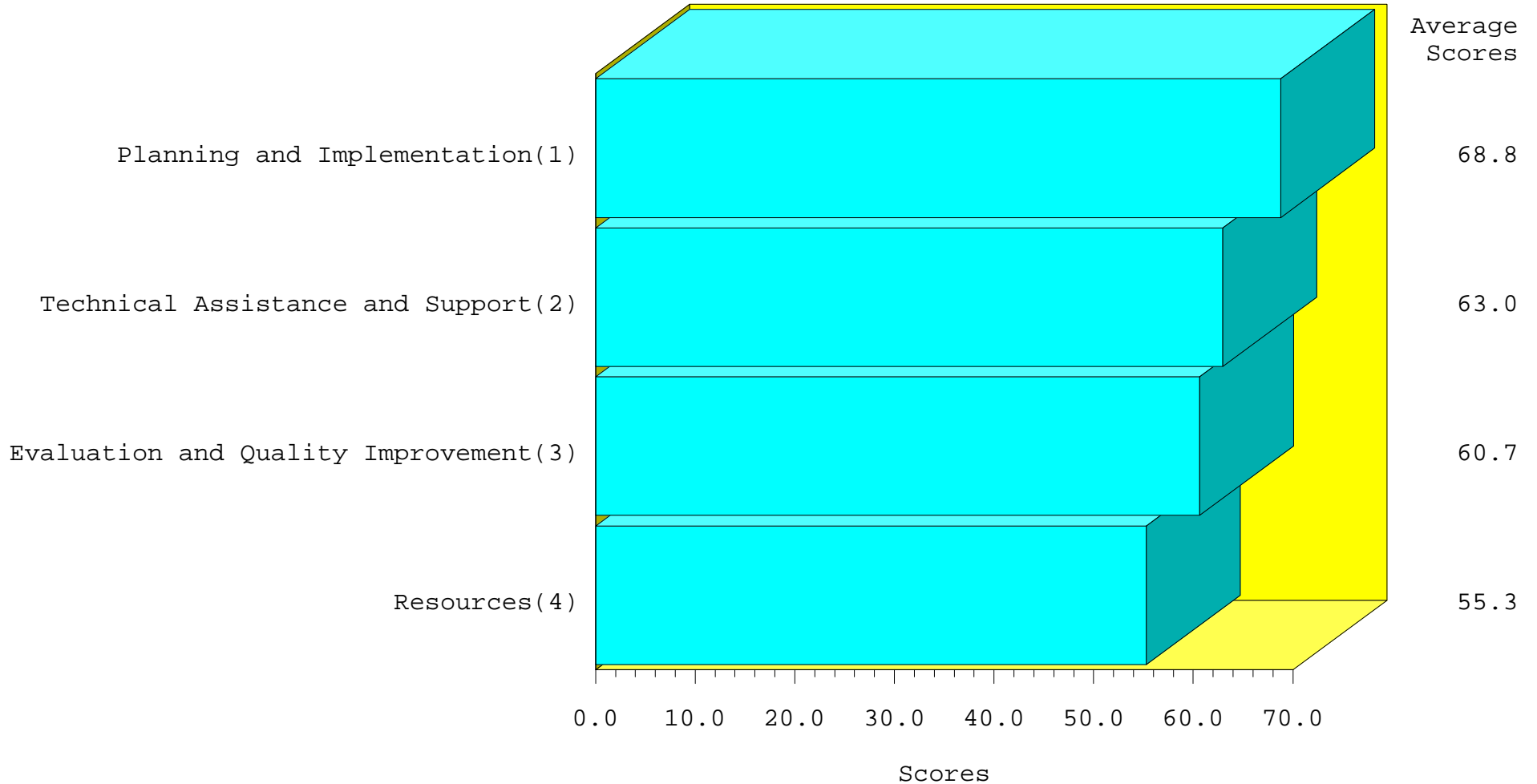
Centers for Disease Control and Prevention
Public Health Practice Program Office
Division of Public Health Systems Development and Research
National Public Health Performance Standards Program
1-800-PHPP0-49 or 1-800-747-7649

NPHPSP State Public Health System Performance Assessment Instrument

Average Scores for State Indicators Across Essential Services

Florida State (FL001)

Date Submitted: 03MAY2005



Centers for Disease Control and Prevention
Public Health Practice Program Office
Division of Public Health Systems Development and Research
National Public Health Performance Standards Program
1-800-PHPP0-49 or 1-800-747-7649

NPHPSP State Public Health System Performance Assessment Instrument

Summary of Performance on Model Standards

Florida State (FL001)

Date Submitted: 03MAY2005

Essential Public Health Service	Indicator/Model Standard Met	Indicator/Model Standard Substantially Met	Indicator/Model Standard Partially Met	Indicator/Model Standard Not Met
1: Monitor Health Status	1.1 Planning and Implementation			
	1.2 Technical Assistance and Support			
	1.3 Evaluation and Quality Improvement			
	1.4 Resources			
2: Diagnose and Investigate Health Problems	2.1 Planning and Implementation			
	2.2 Technical Assistance and Support			
	2.3 Evaluation and Quality Improvement			
	2.4 Resources			
3: Inform, Educate, and Empower People		3.1 Planning and Implementation	3.2 Technical Assistance and Support	
			3.3 Evaluation and Quality Improvement	
			3.4 Resources	
4: Mobilize Partnerships	4.1 Planning and Implementation		4.2 Technical Assistance and Support	

Centers for Disease Control and Prevention

Public Health Practice Program Office

Division of Public Health Systems Development and Research

National Public Health Performance Standards Program

1-800-PHPP0-49 or 1-800-747-7649

NPHPSP State Public Health System Performance Assessment Instrument

Summary of Performance on Model Standards

Florida State (FL001)

Date Submitted: 03MAY2005

Essential Public Health Service	Indicator/Model Standard Met	Indicator/Model Standard Substantially Met	Indicator/Model Standard Partially Met	Indicator/Model Standard Not Met
			4.3 Evaluation and Quality Improvement	
			4.4 Resources	
5: Develop Policies and Plans	5.1 Planning and Implementation			
	5.2 Technical Assistance and Support			
	5.3 Evaluation and Quality Improvement	5.4 Resources		
6: Enforce Laws and Regulations			6.1 Planning and Implementation	
			6.2 Technical Assistance and Support	
			6.3 Evaluation and Quality Improvement	
			6.4 Resources	
7: Link People to Needed Personal Health Services		7.1 Planning and Implementation	7.2 Technical Assistance and Support	
			7.3 Evaluation and Quality Improvement	
			7.4 Resources	

Centers for Disease Control and Prevention

Public Health Practice Program Office

Division of Public Health Systems Development and Research

National Public Health Performance Standards Program

1-800-PHPPO-49 or 1-800-747-7649

NPHPSP State Public Health System Performance Assessment Instrument

Summary of Performance on Model Standards

Florida State (FL001)

Date Submitted: 03MAY2005

Essential Public Health Service	Indicator/Model Standard Met	Indicator/Model Standard Substantially Met	Indicator/Model Standard Partially Met	Indicator/Model Standard Not Met
8: Assure a Competent Workforce			8.1 Planning and Implementation	
			8.2 Technical Assistance and Support	
			8.3 Evaluation and Quality Improvement	
			8.4 Resources	
9: Evaluate Effectiveness, Accessibility and Quality		9.3 Evaluation and Quality Improvement	9.1 Planning and Implementation	
			9.2 Technical Assistance and Support	
			9.4 Resources	
10: Research for New Insights and Innovative Solutions			10.1 Planning and Implementation	
			10.2 Technical Assistance and Support	
			10.3 Evaluation and Quality Improvement	
			10.4 Resources	

Centers for Disease Control and Prevention

Public Health Practice Program Office

Division of Public Health Systems Development and Research

National Public Health Performance Standards Program

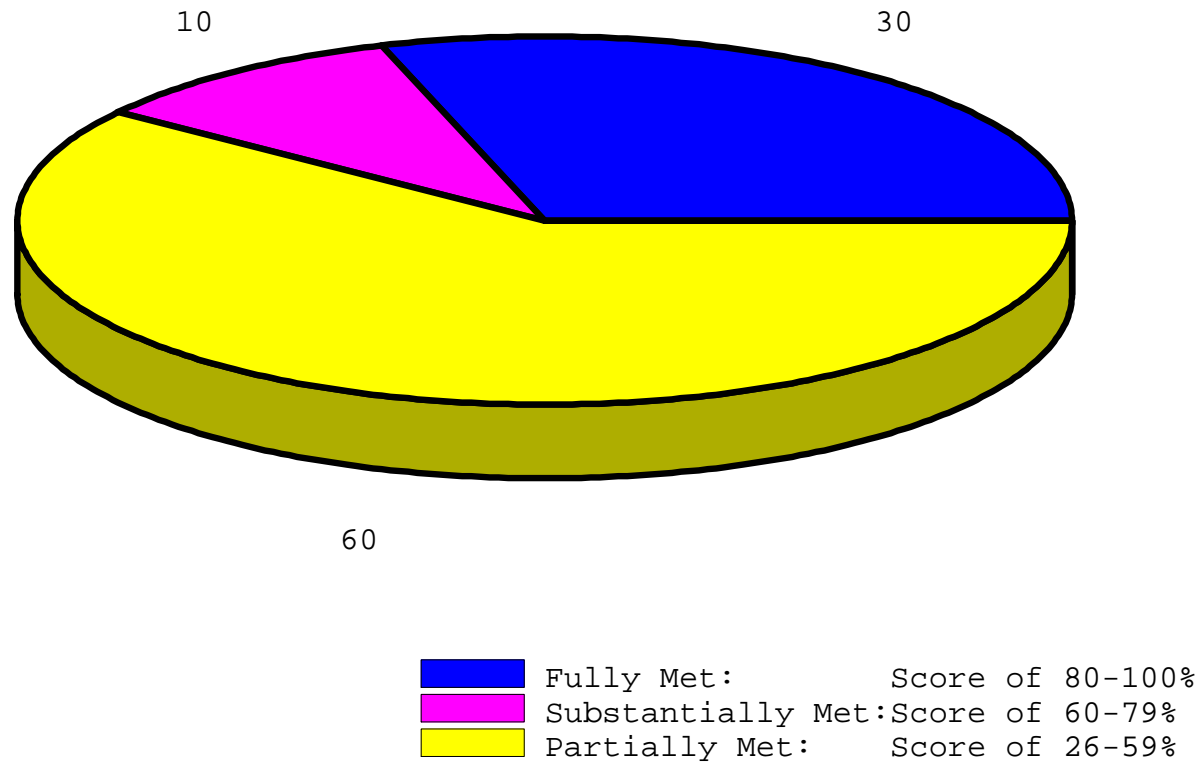
1-800-PHPP0-49 or 1-800-747-7649

NPHPSP State Public Health System Performance Assessment Instrument

Summary of Performance on Model Standards

Florida State (FL001)

Date Submitted: 03MAY2005



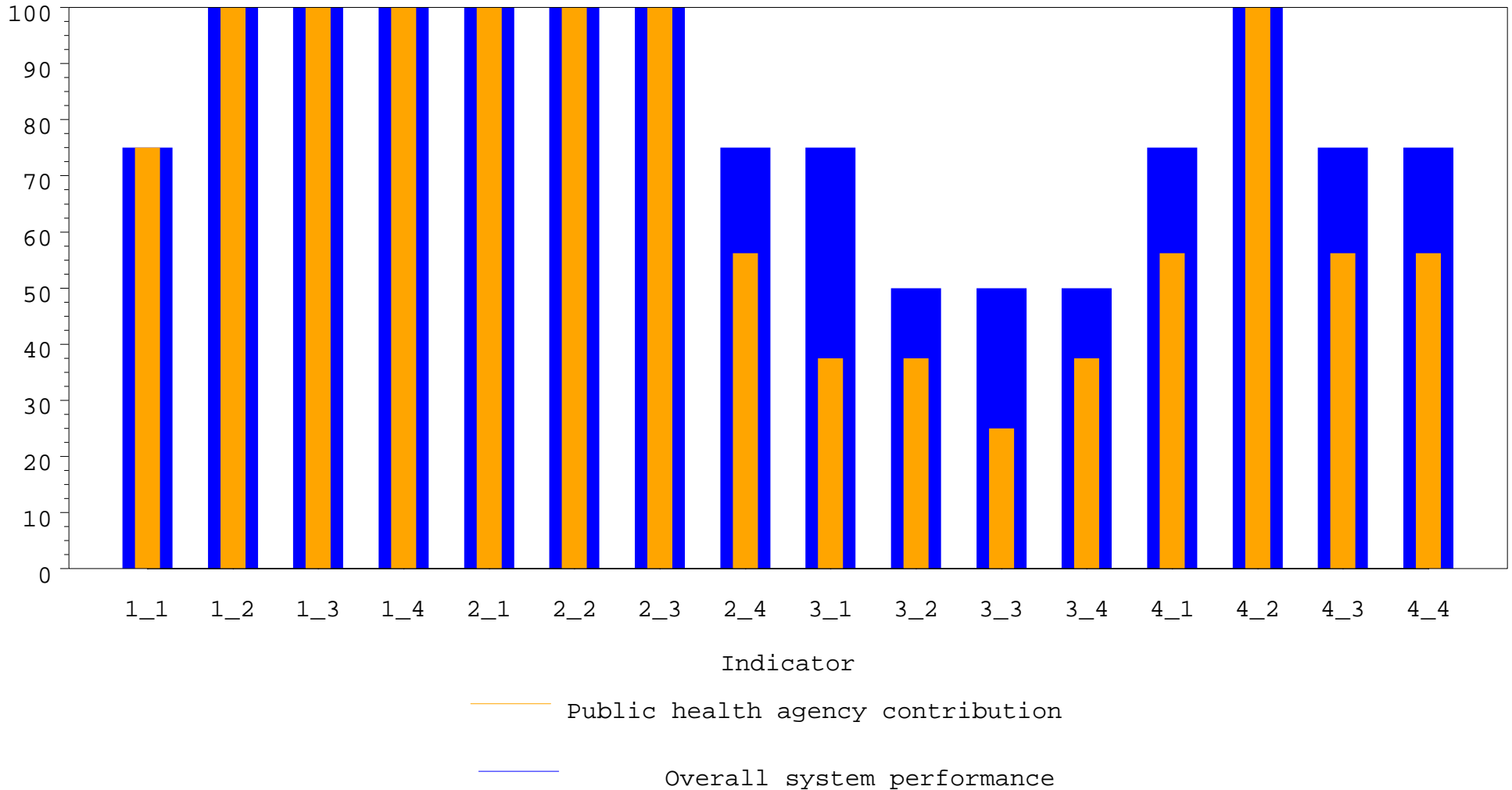
Centers for Disease Control and Prevention
Public Health Practice Program Office
Division of Public Health Systems Development and Research
National Public Health Performance Standards Program
1-800-PHPP0-49 or 1-800-747-7649

NPHPSP State Public Health System Performance Assessment Instrument

System Performance and Agency Contribution - Summary Question Responses

Florida State (FL001)

Date Submitted: 03MAY2005



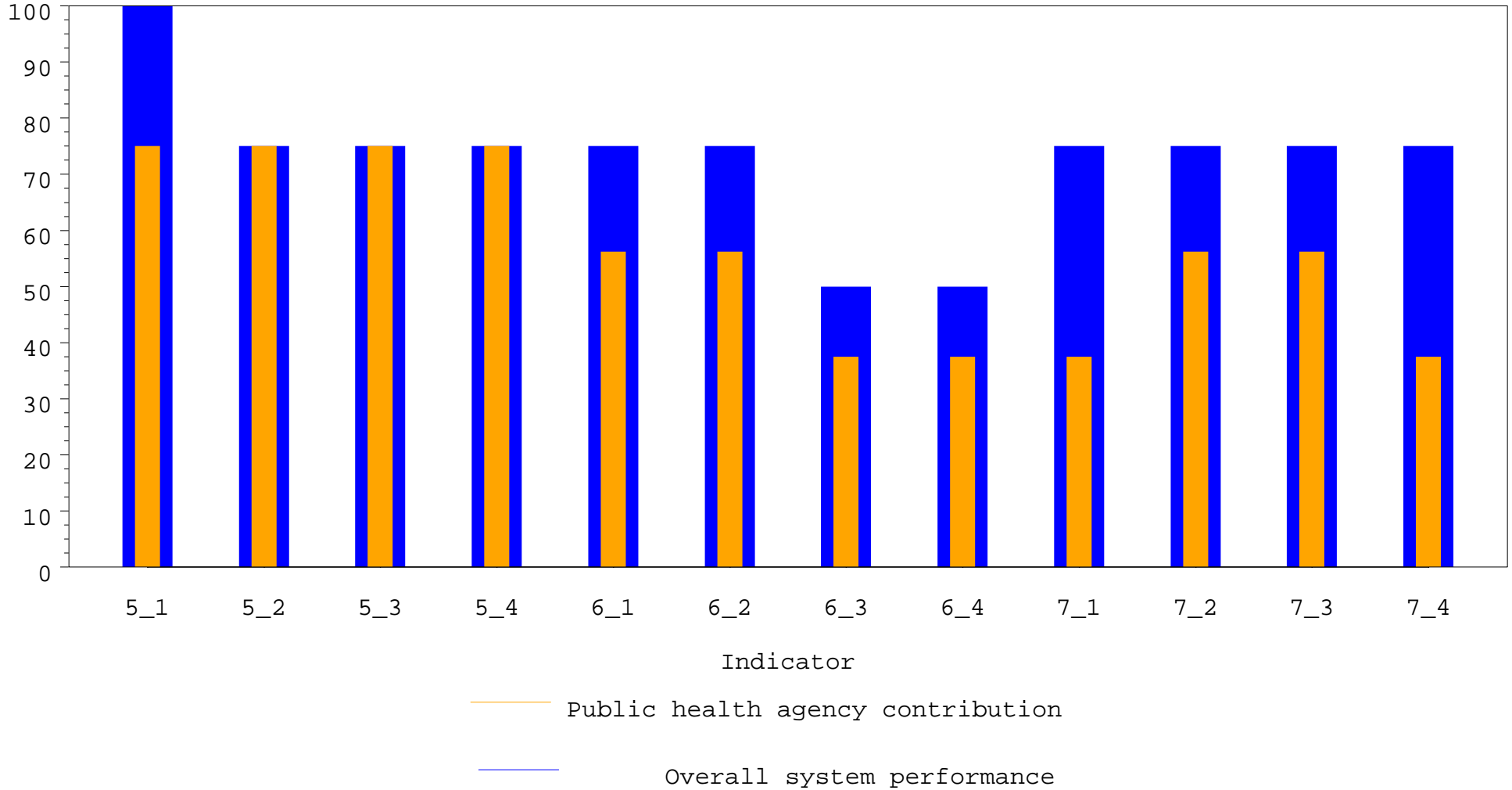
Centers for Disease Control and Prevention
Centers for Disease Control and Prevention
Public Health Practice Program Office
Division of Public Health Systems Development and Research
National Public Health Performance Standards Program
1-800-PHPP0-49 or 1-800-747-7649

NPHPSP State Public Health System Performance Assessment Instrument

System Performance and Agency Contribution - Summary Question Responses

Florida State (FL001)

Date Submitted: 03MAY2005



Centers for Disease Control and Prevention
Centers for Disease Control and Prevention
Public Health Practice Program Office
Division of Public Health Systems Development and Research
National Public Health Performance Standards Program
1-800-PHPP0-49 or 1-800-747-7649

NPHPSP State Public Health System Performance Assessment Instrument

System Performance and Agency Contribution - Summary Question Responses

Florida State (FL001)

Date Submitted: 03MAY2005



Centers for Disease Control and Prevention
Centers for Disease Control and Prevention
Public Health Practice Program Office
Division of Public Health Systems Development and Research
National Public Health Performance Standards Program
1-800-PHPP0-49 or 1-800-747-7649