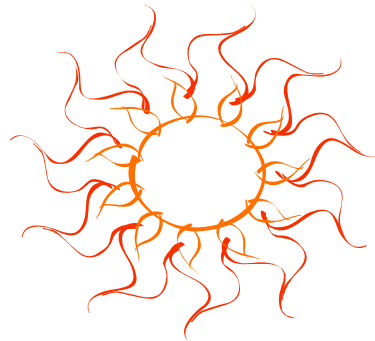
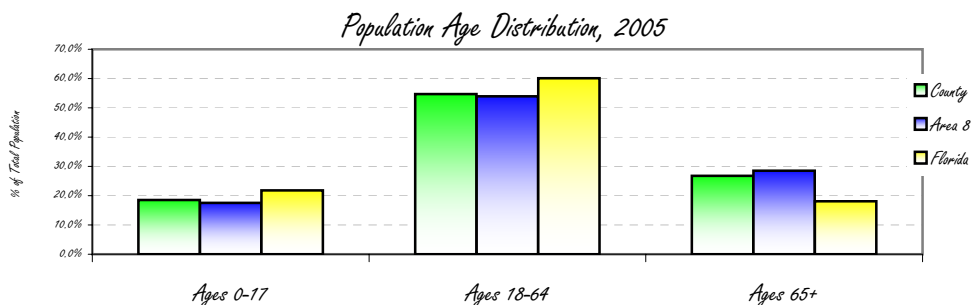


## Population Demographics for Lee County, Florida

	County 2005		Area 8 2005		Florida 2005	
	#	%	#	%	#	%
Total	539,477	36.9%	1,463,142	8.2%	17,926,011	
Male	263,265	48.8%	715,126	48.9%	8,747,893	48.8%
Female	276,212	51.2%	748,016	51.1%	9,178,118	51.2%
Ages 0-17	99,803	18.5%	256,585	17.5%	3,907,870	21.8%
Ages 18-64	295,094	54.7%	789,066	53.9%	10,773,533	60.1%
Ages 65+	144,580	26.8%	417,490	28.5%	3,244,608	18.1%
White	461,792	85.6%	1,262,122	86.3%	13,641,694	76.1%
Black	39,921	7.4%	92,251	6.3%	2,760,606	15.4%
Asian	5,395	1.0%	13,731	0.9%	358,520	2.0%
Other	32,369	6.0%	95,039	6.5%	1,165,191	6.5%
Hispanic	65,816	12.2%	200,658	13.7%	3,495,572	19.5%



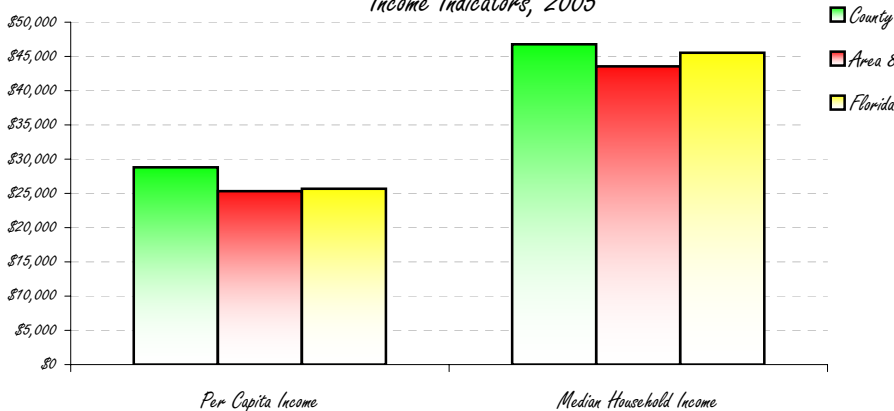
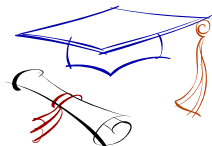
Lee County is more dense than the state with 671.0 persons per square mile compared to the state at 332.4 per square mile.



## Socioeconomic Status for Lee County, Florida

	County 2005	Area 8 2005	Florida 2005
Per Capita Income	\$28,806	\$25,320	\$25,688
Median Household Income	\$46,779	\$43,540	\$45,531
Percent of Persons <100% FPL	9.7%	-	12.5%
Percent of Students on Free/Reduced Lunch	42.2%	35.6%	44.8%
Percent with High School Diploma	82.3%	-	79.9%
Percent with College Degrees	21.1%	-	22.3%
Unemployment Rate	2.8%	3.2%	3.6%

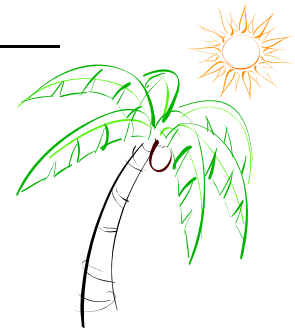
Income Indicators, 2005



Health Care Utilization & Resources for Lee County 2005, Florida

Lee Hospitals  
 Cape Coral Hospital  
 Health Park Hospital  
 Lee Memorial Hospital  
 Lehigh Regional Medical Center  
 Southwest Regional Medical Center

Facilities	County	Area 8
Hospital Beds	1,678	4,577
Hosp. Census days	306,834	855,663
% Bed Occupancy	50%	51%
Nursing Home Beds	2,172	6,700
NH Bed/Person	248	107
Emergency Room Visits	County	Area 8
Pediatric Visits	37,574	88,139
Adult Visits	170,212	500,961



Top Five Avoidable Hospital Admissions Rates

By Diagnosis, 2004

	County	Area 8	Florida
Congestive Heart Failure Admissions Rate/100,000 (Age 18+)	514.3	620.4	577.8
Bacterial Pneumonia Admissions/100,000 (Total Population)	347.3	364.5	333.3
Chronic Obstructive Pulmonary Disease Admissions Rate/100,000 (Age 18+)	289.2	295.8	281.3
Perforated Appendix Admission Rate/1,000 Admissions with Appendicitis	285.7	339.4	291.2
Pediatric Asthma Admissions/100,000 (Age <18)	252.9	259.0	236.7

Workforce & Health Care Resource Information for Lee County, Florida

Top Industries (% of all workers)	County 2000
Educational, health and social services	17.4%
Retail Trade	16.1%
Construction	12.4%
Arts, entertainment, recreation, accommodation and food services	11.6%
Professional, scientific, management, administrative, and waste management services	10.6%

Consumer Price Index	County 2004
Food	99.1
Health Care	96.8
Housing	95.5
Other goods/svcs	99.0
Transportation	96.2



Licensed Health Professionals	County	State
Physicians Per 100,000	186.4	279.7
OB/GYNs Per 100,000	9.0	9.5
Pediatricians Per 100,000	11.9	17.1
Dentists Per 100,000	45.2	61.4
Uninsured	County	State
Percentage of Persons <Age 65 who are Uninsured	21.0%	17.3%

Health Professional Shortage Areas  
 Lee County is a designated primary care and dental shortage area for low income and migrant worker populations.

*Maternal and Child Health*

	<i>County 2005</i>	<i>Area 8 2005</i>	<i>Florida 2005</i>
<i>Total Birth Rate (Rate/1,000)</i>	12.1	10.9	12.6
<i>Teen (15-19) Birth Rate (Rate/1,000)</i>	54.9	50.1	41.9
<i>Repeat Births to Teens (% of Teen Births)</i>	20.0%	17.4%	16.1%
<i>Low Birthweight Rate (% of Live Births)</i>	8.3%	7.5%	8.8%
<i>Percent of Live Births with Late or No Prenatal Care</i>	5.7%	6.2%	5.3%
<i>Infant Death Rate</i>	5.1	5.4	7.2
<i>Percent of Kindergartners Immunized (2004)</i>	96.1%	95.7%	93.7%



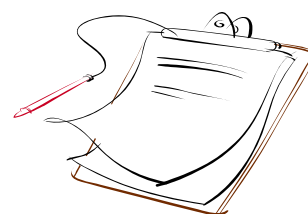
*Mortality & Top 5 Leading Causes of Death*

	<i>County 2005</i>		<i>Florida 2005</i>
	<i>Number</i>	<i>Age-Adjusted Rate / 100,000</i>	<i>Age-Adjusted Rate / 100,000</i>
<i>All Causes</i>	5,736	647.1	723.7
<i>Heart Disease</i>	1,683	173.0	186.2
<i>Cancer</i>	1,372	146.7	172.1
<i>Unintentional Injuries</i>	412	69.8	45.6
<i>Chronic Obstructive Pulmonary Disease</i>	313	31.1	38.3
<i>Stroke</i>	255	27.1	37.6

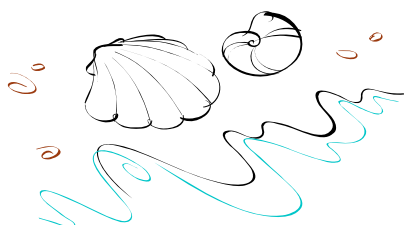


*Behavioral Risk Factors Telephone Survey 2002*

	<i>County</i>	<i>State</i>
<i>Percent who Smoke</i>	22.2%	22.2%
<i>Percent who Drink Heavily</i>	14.2%	14.1%
<i>Percent with High Blood Pressure</i>	30.8%	27.7%
<i>Percent with High Cholesterol</i>	36.0%	35.2%
<i>Percent with Diabetes</i>	8.0%	8.2%
<i>Percent Overweight</i>	37.6%	35.1%
<i>Percent Obese</i>	18.1%	22.3%

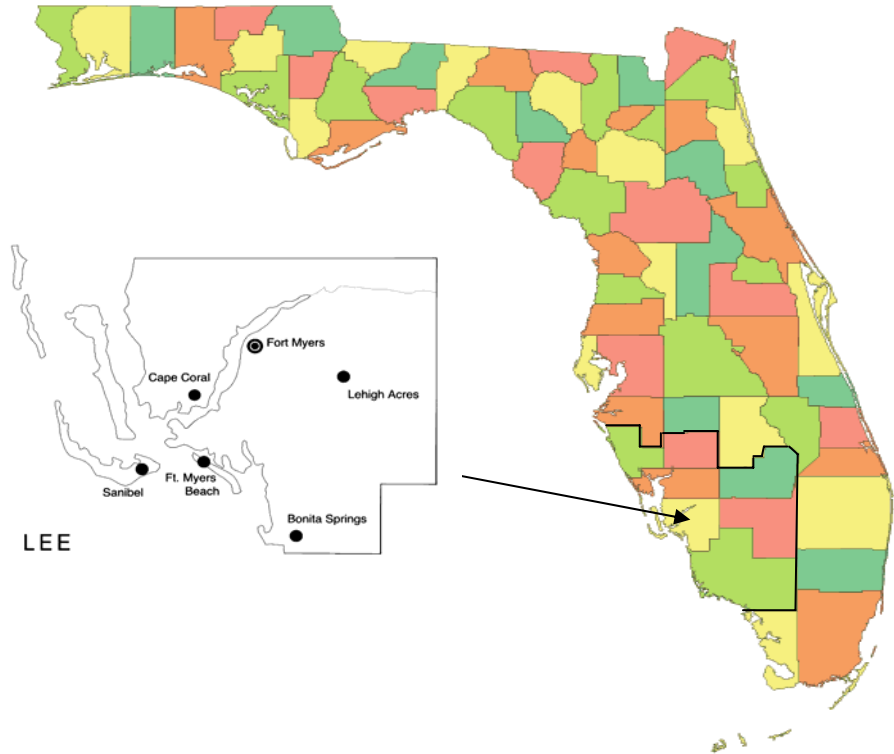


<i>Morbidity</i>	<i>County 2003-2005</i>		<i>Florida 2003-2005</i>
	<i>Avg # Reported/4r</i>	<i>3-Year rate/100,000</i>	<i>3-Year rate/100,000</i>
<i>Sexually Transmitted Diseases</i>	1,672	317.2	356.5
<i>Vaccine Preventable Diseases</i>	13	2.5	3.6
<i>New HIV Cases</i>	74	14.1	32.1
<i>New AIDS Cases</i>	64	12.1	26.9
<i>Tuberculosis</i>	18	3.5	6.1
<i>Enteric Disease</i>	284	53.9	48.2



# Community Health Profile

Lee County, Florida



Health Planning Council of Southwest Florida, Inc.  
8961 Daniels Center Drive #401  
Fort Myers, Florida 33912  
(239) 433-6700



Health Planning Council of Southwest Florida, Inc.  
serving Charlotte, Collier, DeSoto, Glades, Hendry, Lee & Sarasota Counties